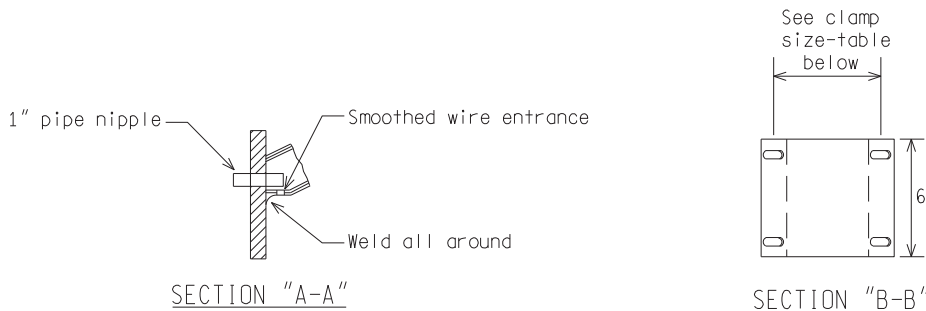
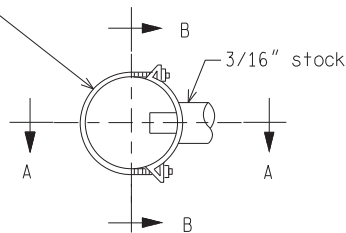


CLAMP ON BRACKET ARM ASSEMBLY (STREET LIGHT)



(2) 5/8" dia. "U" bolts, cadmium or zinc phosphate plating with lockwashers & nuts.



BRACKET DETAIL

CLAMP SIZE TABLE

TYPE	POLE DIAMETER
A	3.6" - 4.5"
B	6.1" - 6.9"
C	7.5" - 8.5"

NOT TO SCALE

File: RefDoc/TR/Signals/Web/Sp Det/Fin/SIG061A.dgn Rev. 02/16/17



PREPARED BY
TRAFFIC AND SAFETY

DRAWN BY: DJF

CHECKED BY:

ENGINEER OF DELIVERY

ENGINEER OF DEVELOPMENT

(SPECIAL DETAIL)

FHWA APPROVAL DATE

MICHIGAN DEPARTMENT OF TRANSPORTATION
BUREAU OF HIGHWAYS DELIVERY STANDARD PLAN FOR
**CLAMP ON BRACKET ARM ASSEMBLY
(STREET LIGHT)**

PLAN DATE

SIG-061-A

SHEET
1 of 1