

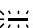







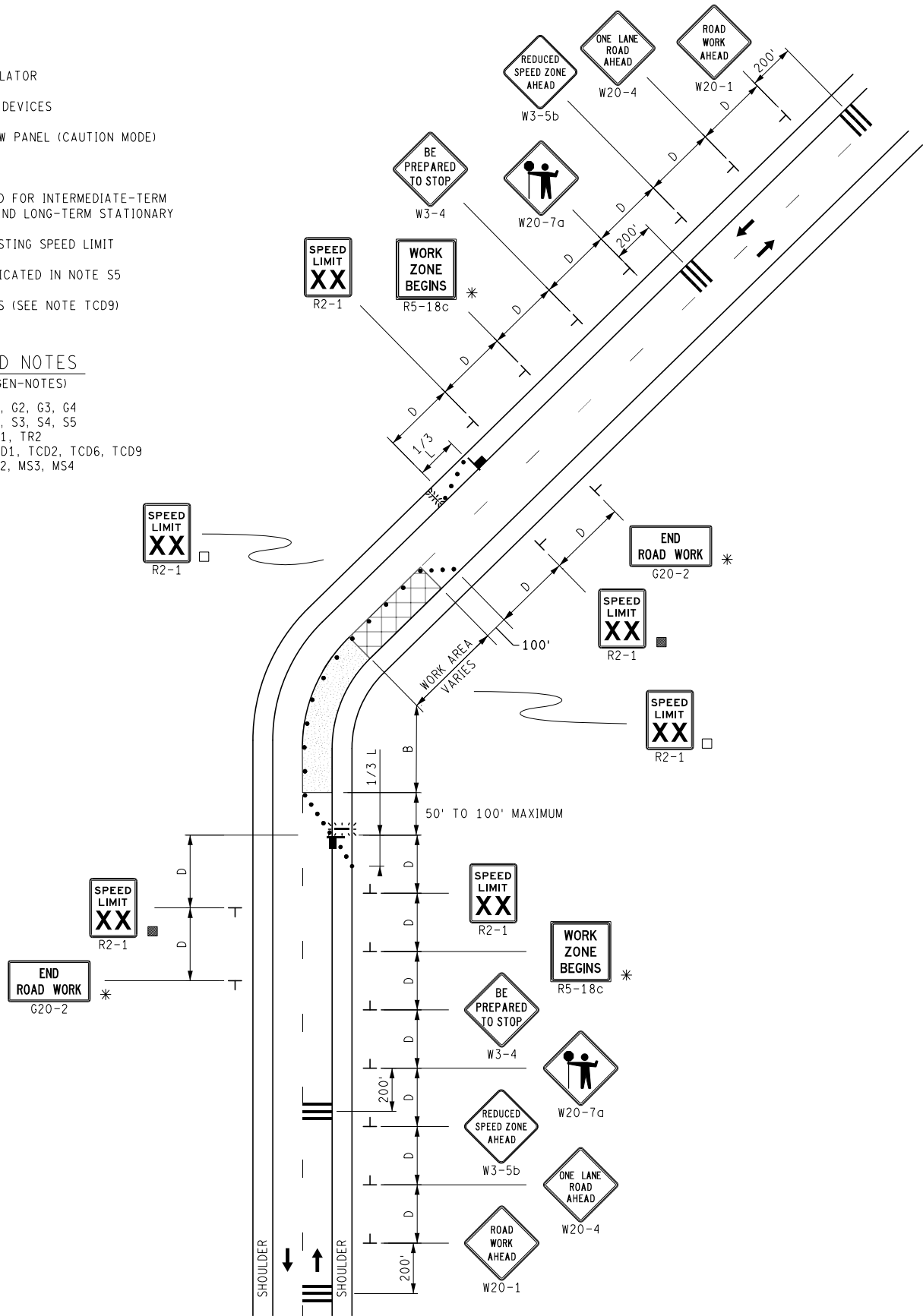
KEY

-  TRAFFIC REGULATOR
-  CHANNELIZING DEVICES
-  LIGHTED ARROW PANEL (CAUTION MODE)
-  TRAFFIC FLOW
-  * ONLY REQUIRED FOR INTERMEDIATE-TERM STATIONARY AND LONG-TERM STATIONARY
-  REFLECTS EXISTING SPEED LIMIT
-  PLACE AS INDICATED IN NOTE S5
-  RUMBLE STRIPS (SEE NOTE TCD9)

STANDARD NOTES

(SEE 102-GEN-NOTES)

- GENERAL: G1, G2, G3, G4
- SIGNING: S1, S3, S4, S5
- TRAF REG: TR1, TR2
- DEVICES: TCD1, TCD2, TCD6, TCD9
- MAINT & SURV: MS2, MS3, MS4



NOT TO SCALE

 Michigan Department of Transportation	MAINTENANCE MAINTAINING TRAFFIC TYPICAL	DURATION: LONG-TERM STATIONARY INTERMEDIATE-TERM STATIONARY SHORT-TERM STATIONARY	LANE CLOSURE FOR A TWO-LANE, TWO WAY ROADWAY UTILIZING TRAFFIC REGULATORS AND RUMBLE STRIPS WITH A MAXIMUM 10 MPH SPEED REDUCTION	DATE: JUNE 2021 NO: 4111B-M-TR- NFW-2L-RUM SHEET: 1 OF 1
	FILE: 4111B-M-TR-NFW-2L-RUM.dgn			