

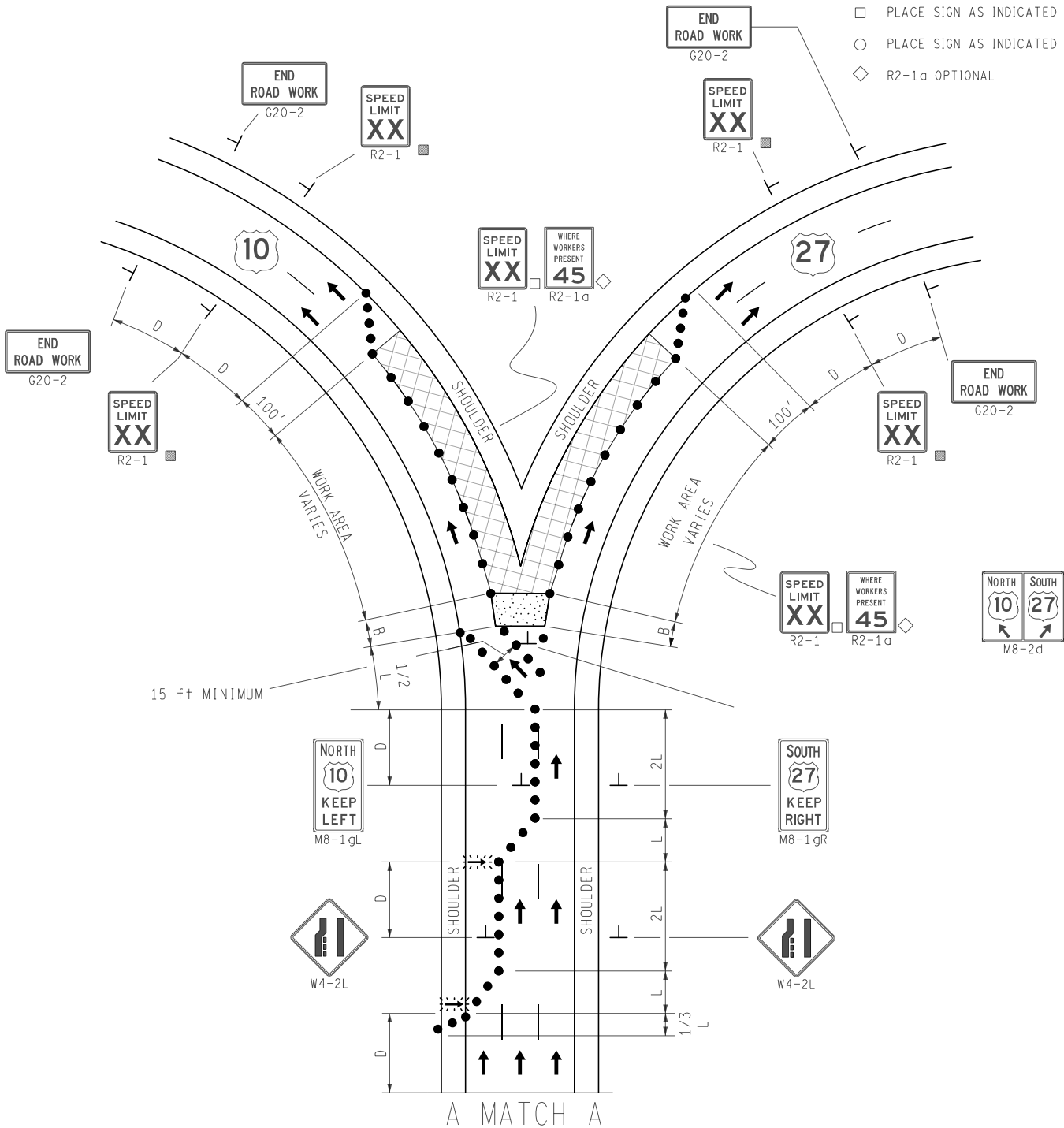
STANDARD NOTES

(SEE 102-GEN-NOTES)

GENERAL: G1, G2, G3, G4, G5
 SIGNING: S1, S2, S3, S5, S6, S8
 DEVICES: TCD1, TCD2, TCD6

KEY

- CHANNELIZING DEVICES
- ⚡ LIGHTED ARROW PANEL
- ← TRAFFIC FLOW
- REFLECTS EXISTING SPEED LIMIT
- PLACE SIGN AS INDICATED IN NOTE S5
- PLACE SIGN AS INDICATED IN NOTE S2
- ◇ R2-1a OPTIONAL



NOT TO SCALE

MAINTAINING TRAFFIC TYPICAL

NO: 351-
 SP-GORE-2LC-(L)

**2-LANE CLOSURE
 IN ADVANCE OF GORE WITH SHIFT
 ON A 3-LANE FREEWAY**

DATE:
 DECEMBER 2021
 SHEET:

