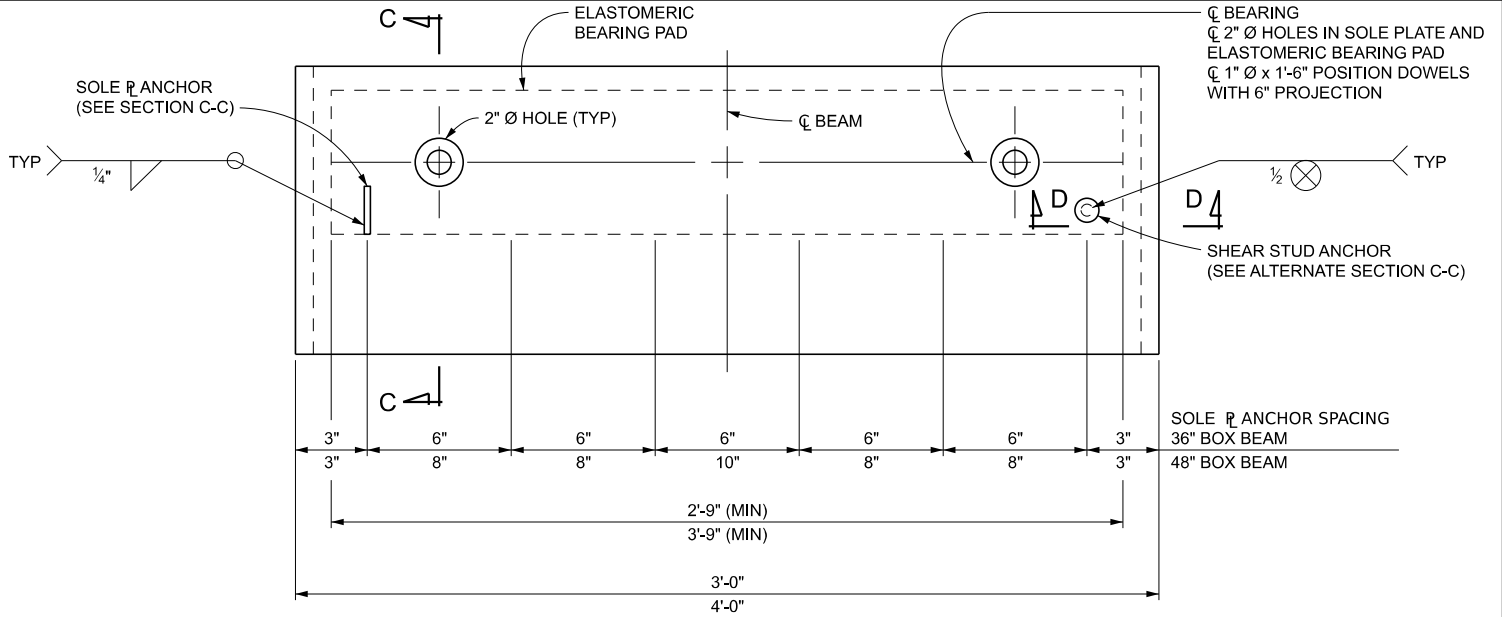


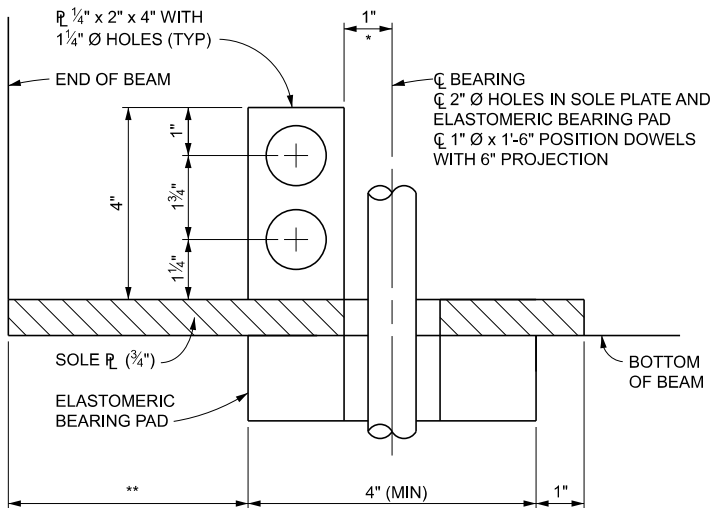
DRAWN BY: BLT
 CHECKED BY: CWC
 APPROVED BY: KCK

MICHIGAN DEPARTMENT OF TRANSPORTATION
 BUREAU OF DEVELOPMENT
 BEARING DETAILS FOR
 PRESTRESSED CONCRETE BOX BEAMS

ISSUED: 04/28/25
 SUPERSEDES: 02/24/25

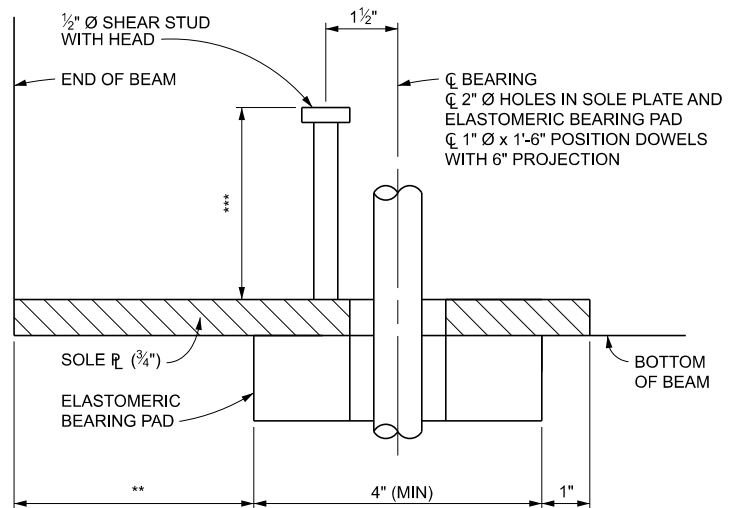


PLAN



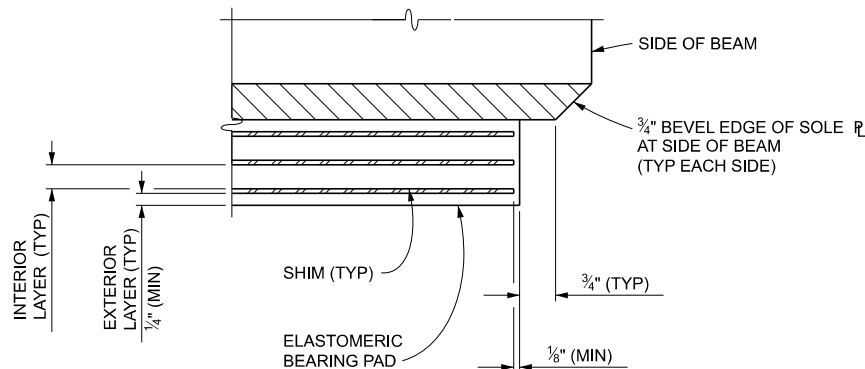
SECTION C-C

* DECREASE TO 0" WHEN PAD LENGTH IS LESS THAN 6"
 ** END OF BEAM TO CENTERLINE OF BEARING - 1/2 OF ELASTOMERIC BEARING PAD WIDTH



ALTERNATE SECTION C-C

*** EXTEND SHEAR STUDS ABOVE HIGHEST ROW WITH STRANDS WITHOUT INTERFERENCE TO REINFORCEMENT



SECTION D-D

NOTES:

SOLE PLATE MAY BE SHORTENED WHEN BEAM ROTATION AND PAD PRESSURE REQUIREMENTS DICTATE.

PREPARED BY
 DESIGN DIVISION

8.43.01A