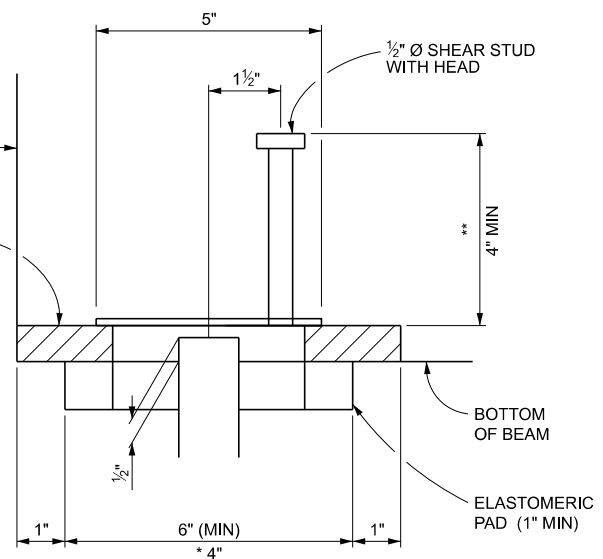
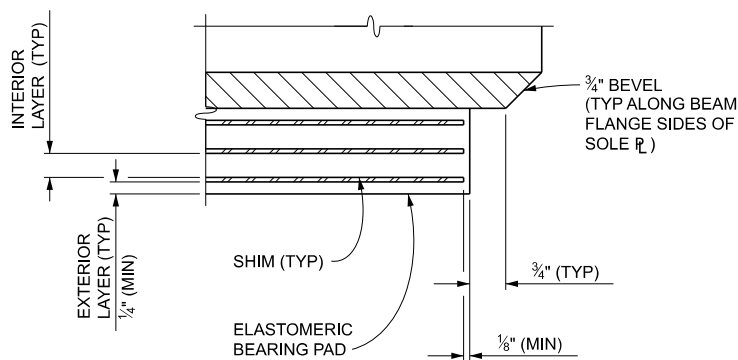


SECTION A-A



SECTION B-B

** EXTEND SHEAR STUDS ABOVE HIGHEST ROW WITH STRANDS WITHOUT INTERFERENCE TO REINFORCEMENT



SECTION C-C

NOTES:

THIS BEARING IS TO BE USED AT PIERS AND AT ABUTMENTS.

SOLE PLATES SHOULD BE TILTED TO PROVIDE REQUIRED BEVELS WHICH EXCEED 1/8"/FT.

* 4" MINIMUM PAD LENGTH WITH 3" SLOT MAY BE USED WHEN BEAM ROTATION AND PAD PRESSURE REQUIREMENTS DICTATE.

DETAIL SECTION B-B ON PLANS AS AN ALTERNATE OPTION
TO SECTION A-A.

PREPARED BY
DESIGN DIVISION

8.43.01