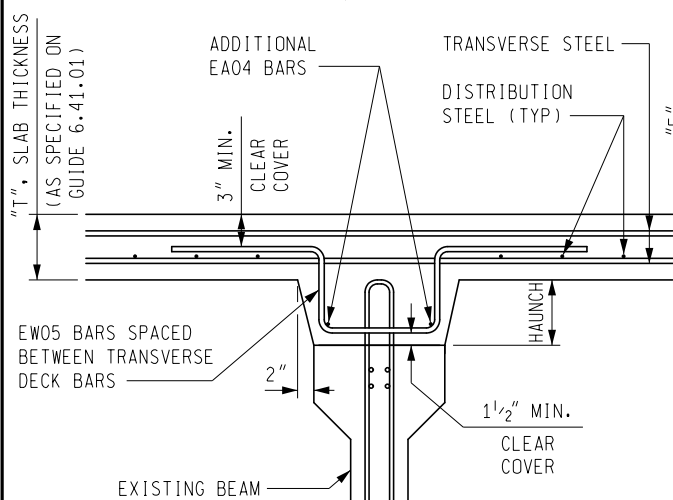


DRAWN BY: BLT  
 CHECKED BY: VZ  
 APPROVED BY: DAJ

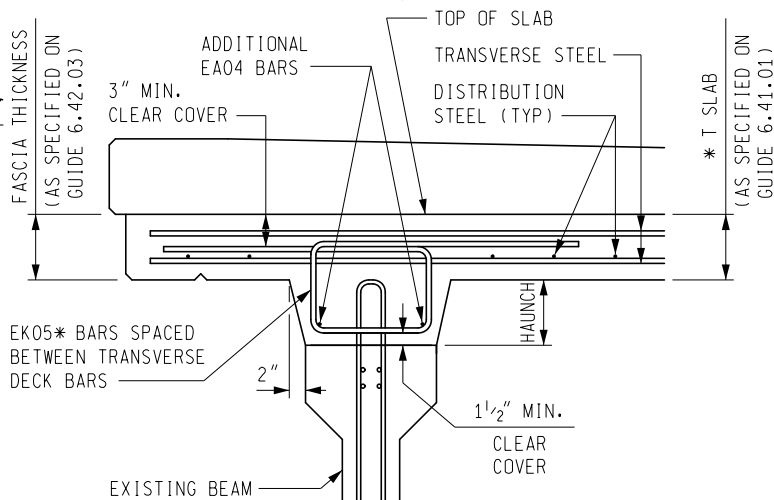
MICHIGAN DEPARTMENT OF TRANSPORTATION  
 BUREAU OF DEVELOPMENT

DEEP HAUNCH DETAILS -  
 CONCRETE BEAMS

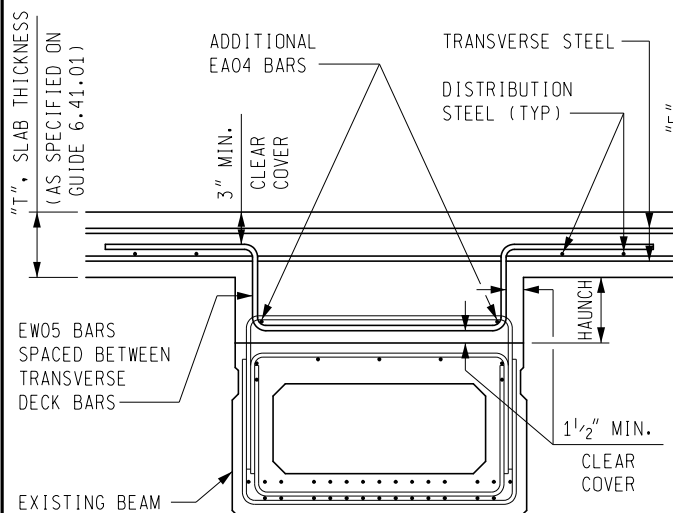
ISSUED: 09/25/17  
 SUPERSEDES: 12/19/16



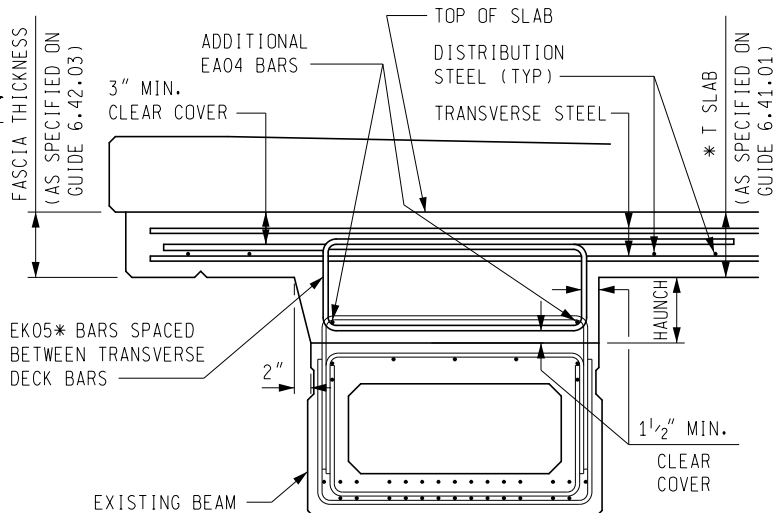
INTERIOR BEAM HAUNCH > 4" DETAIL \*\*  
 CONVENTIONAL FORMS



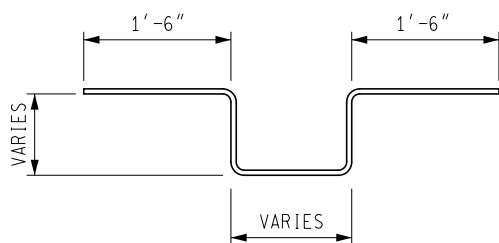
FASCIA BEAM HAUNCH > 4" DETAIL \*\*  
 CONVENTIONAL FORMS



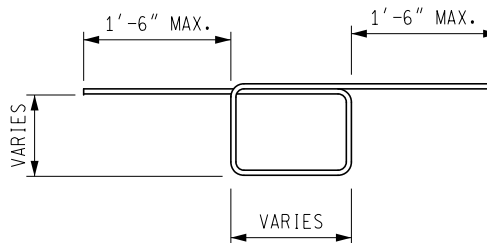
INTERIOR BEAM HAUNCH > 4" DETAIL \*\*  
 METAL STAY IN PLACE FORMS



FASCIA BEAM HAUNCH > 4" DETAIL \*\*  
 METAL STAY IN PLACE FORMS



EW05 BAR



EK05\* BAR

NOTES:

\* USE EW05 BAR WHEN OVERHANG IS GREATER THAN 1'-6"

DETAIL HAUNCH REINFORCEMENT ON PLAN SHEETS AND STEEL REINFORCEMENT DETAILS SHEET.

SHOW LIMITS OF HAUNCH REINFORCEMENT ALONG THE LENGTH OF EACH BEAM. WHERE LIMITS ARE UNKNOWN PROVIDE EXTRA HAUNCH REINFORCEMENT IN QUANTITY TOTALS.

\*\* FOR BULB-T BEAMS USE WHEN HAUNCH > 3".

PLAN NOTES:

THE HAUNCH REINFORCEMENT QUANTITY SHOWN PROVIDES THE AMOUNT NECESSARY TO COVER THE LIMITS SHOWN ON THE PLANS. ADDITIONAL REINFORCEMENT SHALL BE PROVIDED IN AREAS WHERE THE HAUNCH EXCEEDS 4" IN DEPTH.

PREPARED BY  
 DESIGN DIVISION

6.42.03A