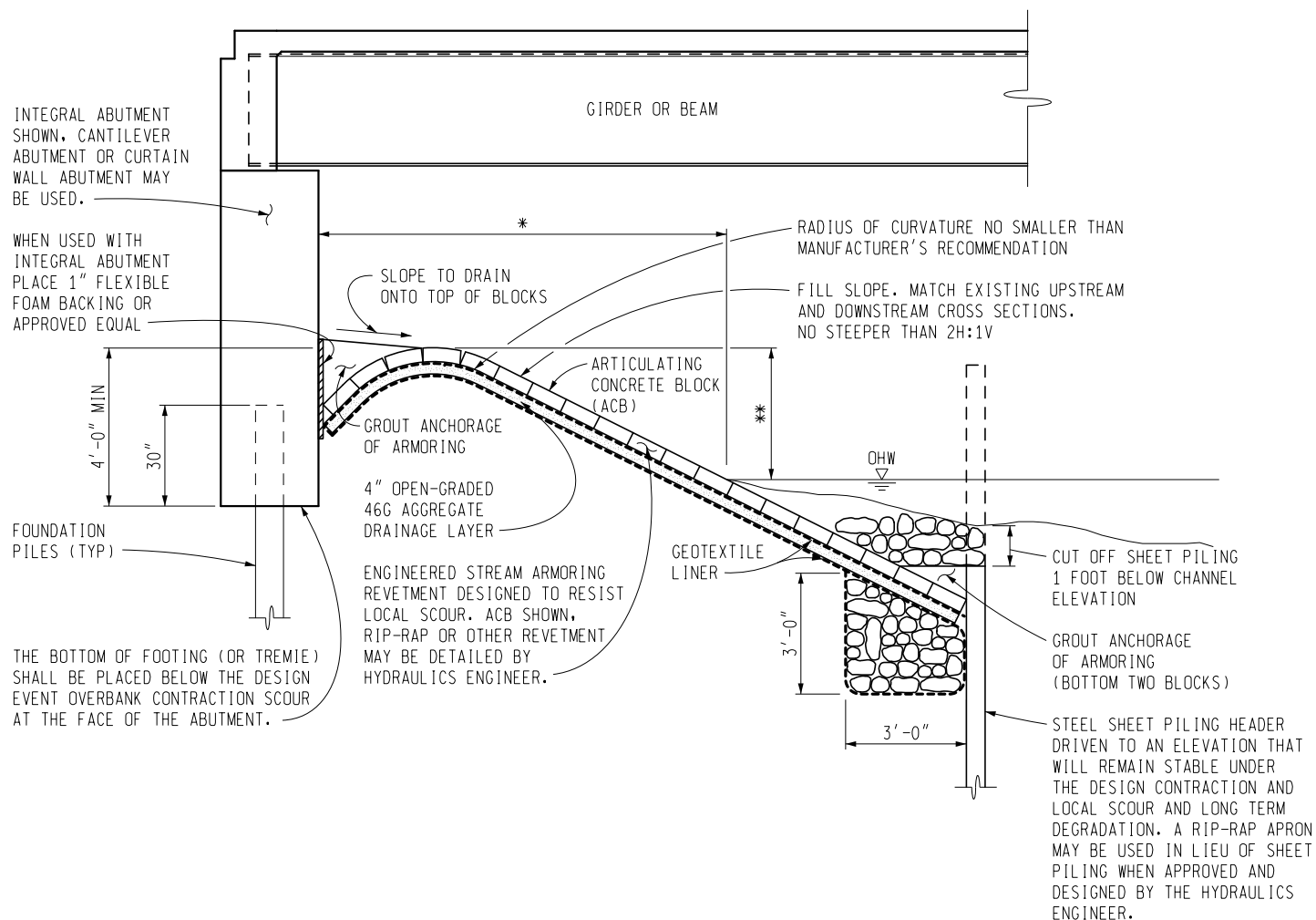


DRAWN BY: BLT
CHECKED BY: VZ
APPROVED BY: KCK

MICHIGAN DEPARTMENT OF TRANSPORTATION
BUREAU OF DEVELOPMENT

PROTECTION OF SPILL-THROUGH ABUTMENT

ISSUED: 05/22/23
SUPERSEDES: 09/24/18



PROTECTION OF SPILL-THROUGH ABUTMENT

* SET-BACK DISTANCE OF THE ABUTMENT FACE MEASURED FROM THE ORDINARY HIGH WATER. MINIMUM OF 25' OR 3H:1V SET-BACK RATIO OF THE DESIGN FLOOD HYDRAULIC DEPTH (WHICHEVER IS GREATER).

** COUNTERMEASURES SHOULD BE EXTENDED 2' ABOVE THE DESIGN FLOOD ELEVATION, WHENEVER PRACTICAL.

NOTES:

FOR DEFINITIONS AND DESIGN CONSIDERATIONS SEE BRIDGE DESIGN MANUAL SECTION 7.03.01 B.5.

PREPARED BY
DESIGN DIVISION

5.47.01