


Welcome to the Environmental Services Section Design 101 Day

Margaret Barondess
Section Manager
517-335-2621
barondessm@michigan.gov

1

The National Environmental Policy Act or NEPA

May 1, 2019



Presented by Ann Lawrie

2

What is NEPA?

- National Environmental Policy Act of 1969
- All projects receiving federal dollars or federal approval must be reviewed for environmental impacts
 - Social
 - Environmental
 - Economic



3

Origin of NEPA

- Interstate highway system
- Environmental degradation
- Quality of life degradation
- Health impacts
- Urban sprawl



4

The NEPA Umbrella

NEPA
National Environmental Policy Act

- Public Involvement
- Threatened and Endangered Species
- Historic Preservation
- Noise Abatement
- Wetland and Floodplain Permits
- Coastal Zone Consistency
- Title VI and Environmental Justice
- Sustainable Development
- Farmland Protection
- Air Quality Conformity
- Recreation Area Protection
- Community Impact Assessment
- Water Quality Protection

5

It's the Law....

- 36 Federal laws
- 5 Presidential Executive Orders
- State laws mirror federal

Michigan

6

Classes of Action

- **Class I – Environmental Impact Statement (EIS)**
 - Known significant environmental impacts
- **Class II – Categorical Exclusion (CE)**
 - No significant environmental impacts
- **Class III – Environmental Assessment (EA)**
 - Significant environmental impacts unclear

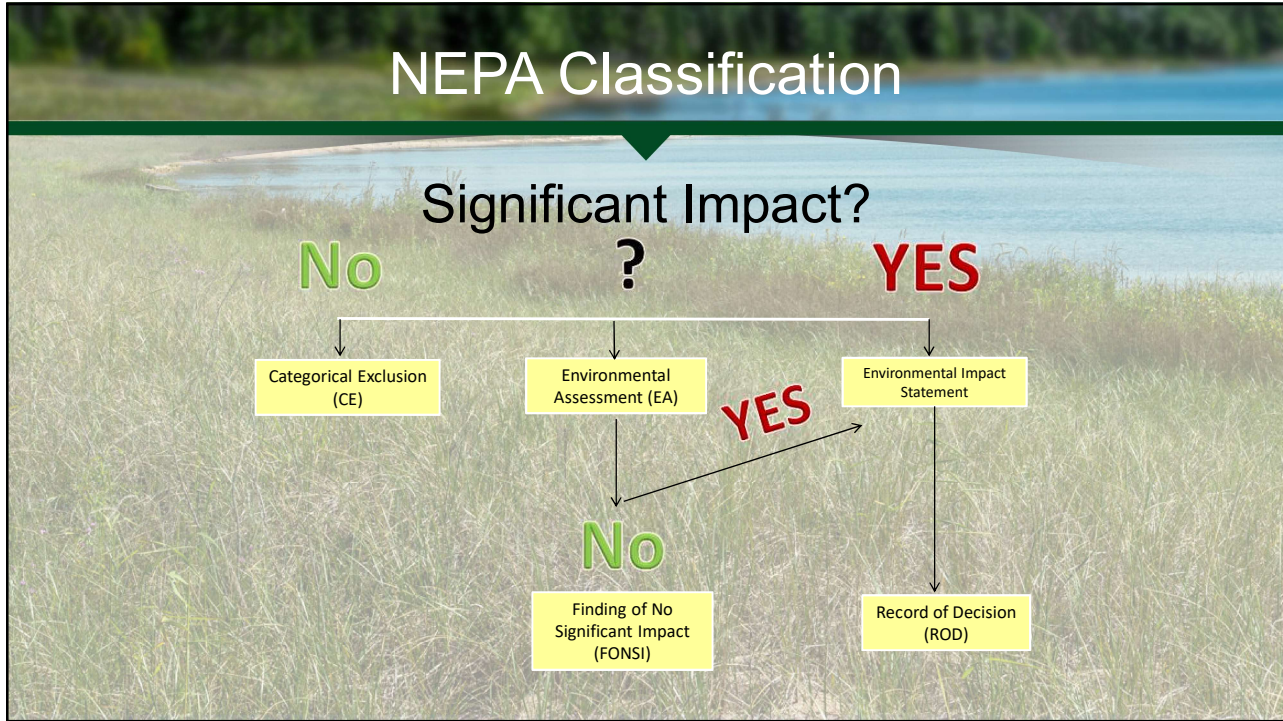
7

NEPA Regulations

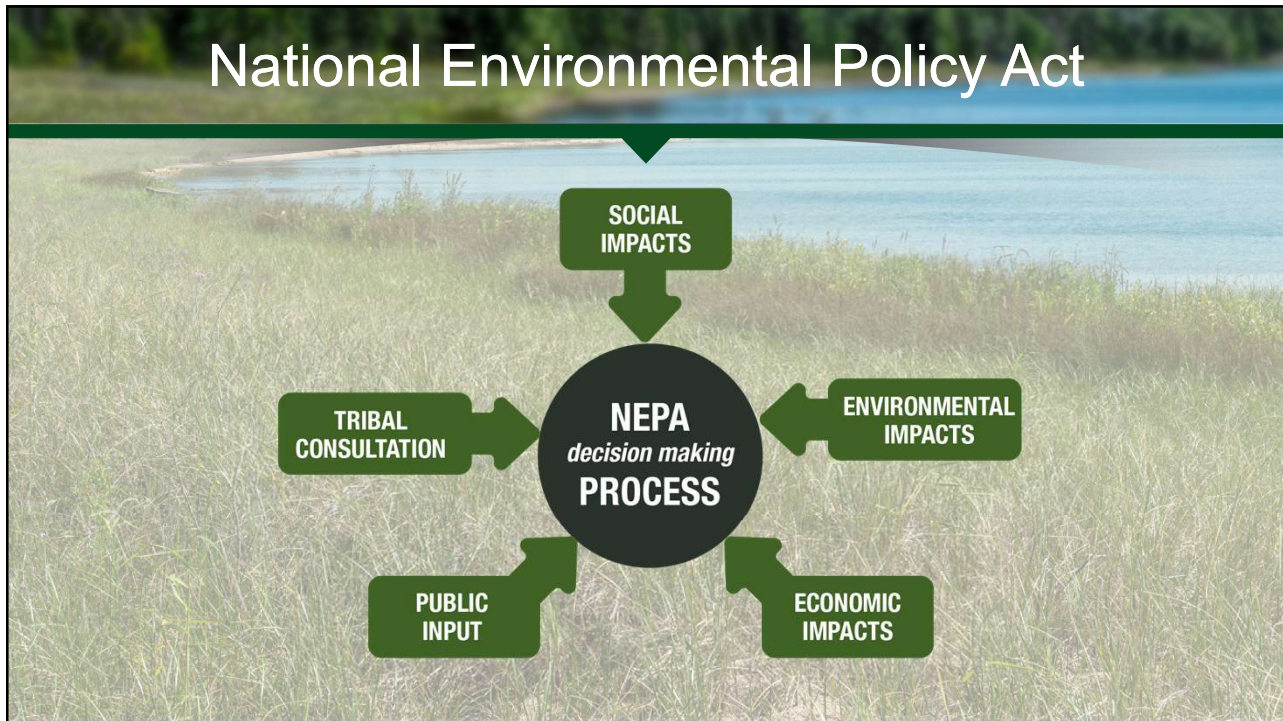


- Housed in the Federal Register
- Categorical Exclusions (CE's) are actions based on past experience with similar actions and do not involve significant environmental impacts
- List of actions that meet the criteria for CE's listed in the Federal Register

8



9



10

Understanding Environmental Issues

What Is An Impact?

Any change in existing conditions

- Adverse or beneficial changes
- Major or minor changes
- Widespread or localized changes
- Long-term or short-term changes
- Significant change?

Context and **intensity**



11

Avoid, Minimize, Mitigate

Avoid

Minimize

Mitigate

- Creative problem solving between the PM/ESS/Resource Agency to avoid impacts and/or minimize impacts will help to keep your project a Categorical Exclusion
- Mitigation can be as small as planting a tree, to relocating plants, to constructing a new wetland mitigation site

12

Tools and Resources

- Specialty maps
- Field reviews
- Project manager's information
- Surveys
- Photos
- Internet
- GIS

13

Regulatory Agency Coordination



DEO



US Army Corps
of Engineers



U.S.
FISH & WILDLIFE
SERVICE

Your Project



DEPARTMENT OF NATURAL RESOURCES
DNR
MICHIGAN



INTER-TRIBAL
COUNCIL OF MICHIGAN, INC.



MSHDA
MICHIGAN STATE HOUSING DEVELOPMENT AUTHORITY

14

Commitments



- Use of federal funds requires compliance with NEPA and state/federal permit requirements
- FHWA requires we document how we avoided, minimized, or mitigated for impacts.
- For Categorical Exclusions, mitigation follow-up assures the project will have “*no significant impacts*”

15

Who are we at MDOT?

• Project Coordination Unit

- NEPA classification of projects
 - Environmental Coordinators
- Environmental Impact Review
 - Archaeology
 - Historic Preservation
 - Environmental Contamination
 - Recreation Impacts

• Environmental Analysis Unit

- Preparation of Major Action NEPA documents
- Noise Analysis & Air Quality analysis (project level)
- Social/Community Impact/Environmental Justice
- Land Use/Indirect and Cumulative
- Public Involvement/Public Hearing

Compliance and Mitigation Unit

- Threatened and Endangered Species
- Agriculture
- Wetlands/Inland Lakes and Streams/Floodplains
- Water Quality
- Coastal Resources
- Migratory Birds

Provide for:

- All department wetland mitigation needs
- Follow-up of mitigation commitments from major action NEPA documents

16



17

Customer Service

Our priority

- **We are here to help you navigate the NEPA process**
- **Ask Questions Today**
- **Meet our Staff**

18