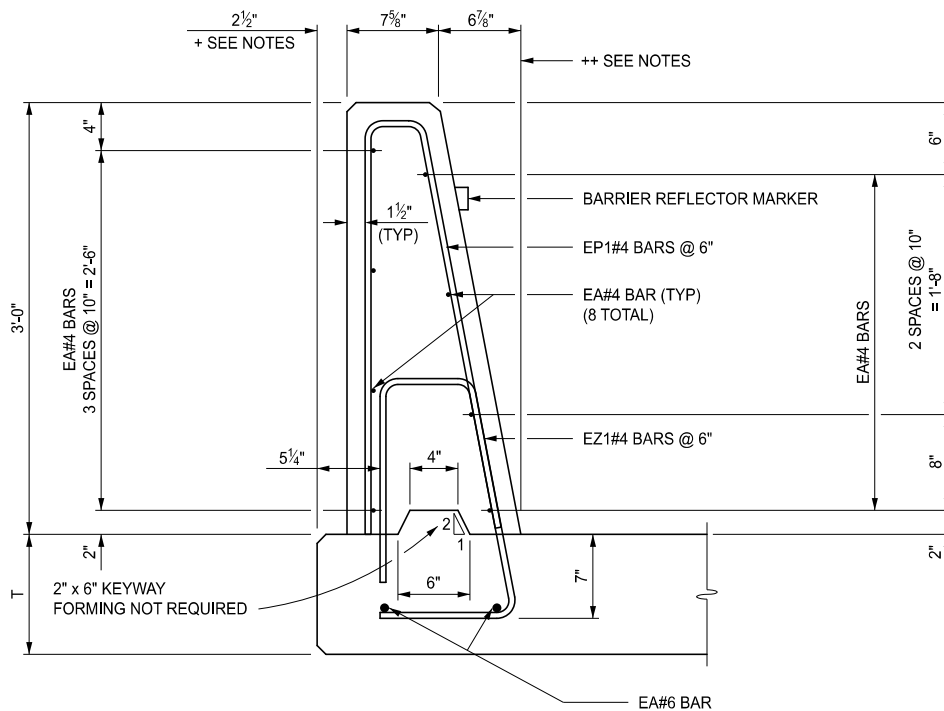


BRIDGE BARRIER RAILING, TYPE 7 OUTSIDE ELEVATION



SECTION A-A

NO AESTHETIC TREATMENT

APPROVED BY: _____
DIRECTOR, BUREAU OF BRIDGES AND STRUCTURES

APPROVED BY: _____
DIRECTOR, BUREAU OF FIELD SERVICES

APPROVED BY: _____
DIRECTOR, BUREAU OF DEVELOPMENT



DEPARTMENT DIRECTOR
BRADLEY C. WIEFERICH, PE

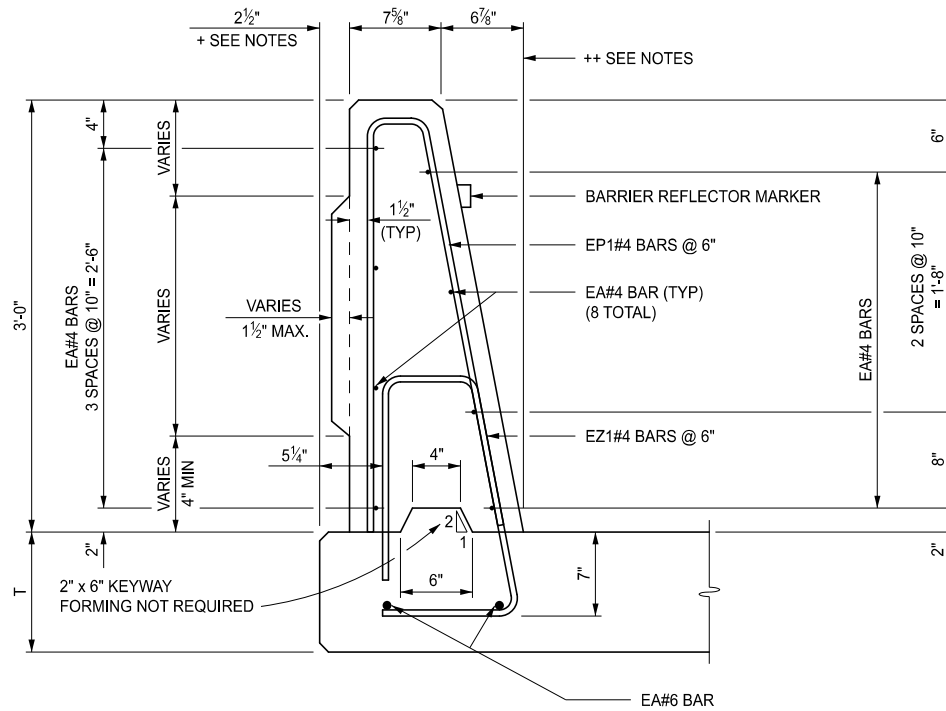
STANDARD PLAN FOR
BRIDGE BARRIER RAILING, TYPE 7

(SPECIAL DETAIL)
FHWA APPROVAL

09/02/2020
PLAN DATE

B-28-A

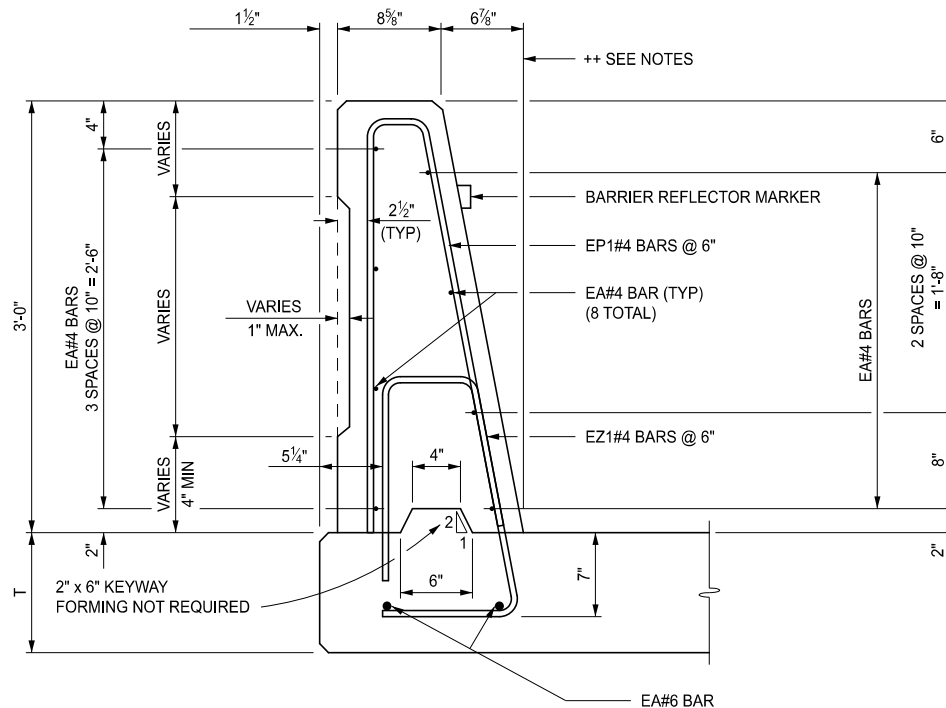
SHEET
1 OF 7



SECTION A-A

BRIDGE BARRIER RAILING, AESTHETIC, TYPE 7, DET 1

(THE TYPE AND LIMITS OF THE AESTHETIC TREATMENT,)
(IF APPLICABLE, ARE AS DETAILED ON THE PLANS.)



SECTION A-A

BRIDGE BARRIER RAILING, AESTHETIC, TYPE 7, DET 2

(THE TYPE AND LIMITS OF THE AESTHETIC TREATMENT,)
(IF APPLICABLE, ARE AS DETAILED ON THE PLANS.)



DEPARTMENT DIRECTOR
BRADLEY C. WIEFERICH, PE

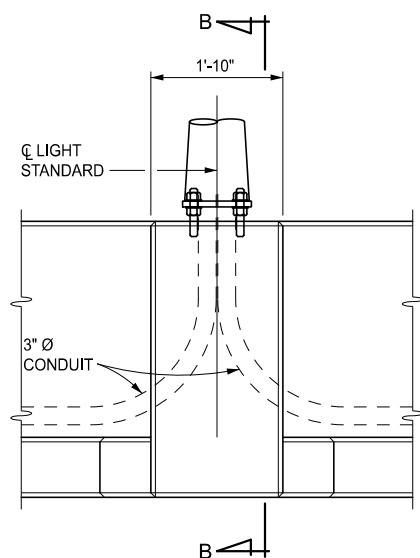
STANDARD PLAN FOR
BRIDGE BARRIER RAILING, TYPE 7

(SPECIAL DETAIL)
FHWA APPROVAL

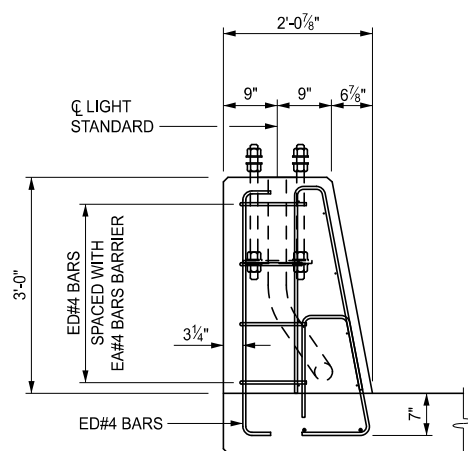
09/02/2020
PLAN DATE

B-28-A

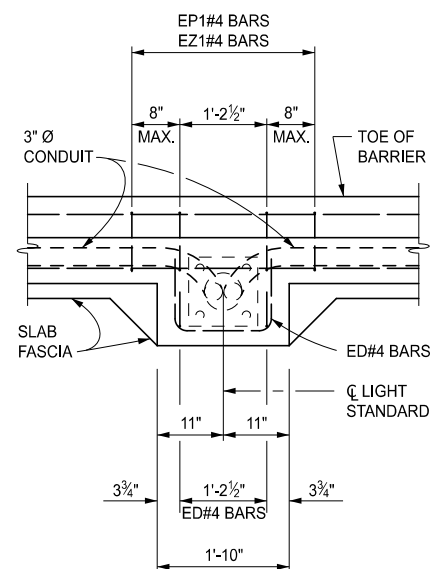
SHEET
2 OF 7



ELEVATION VIEW



SECTION B-B



PLAN VIEW

LIGHT STANDARD DETAILS

NO AESTHETIC TREATMENT ON LIGHT STANDARD 1'-10" x 11 7/8" PROTRUSION



DEPARTMENT DIRECTOR
BRADLEY C. WIEFERICH, PE

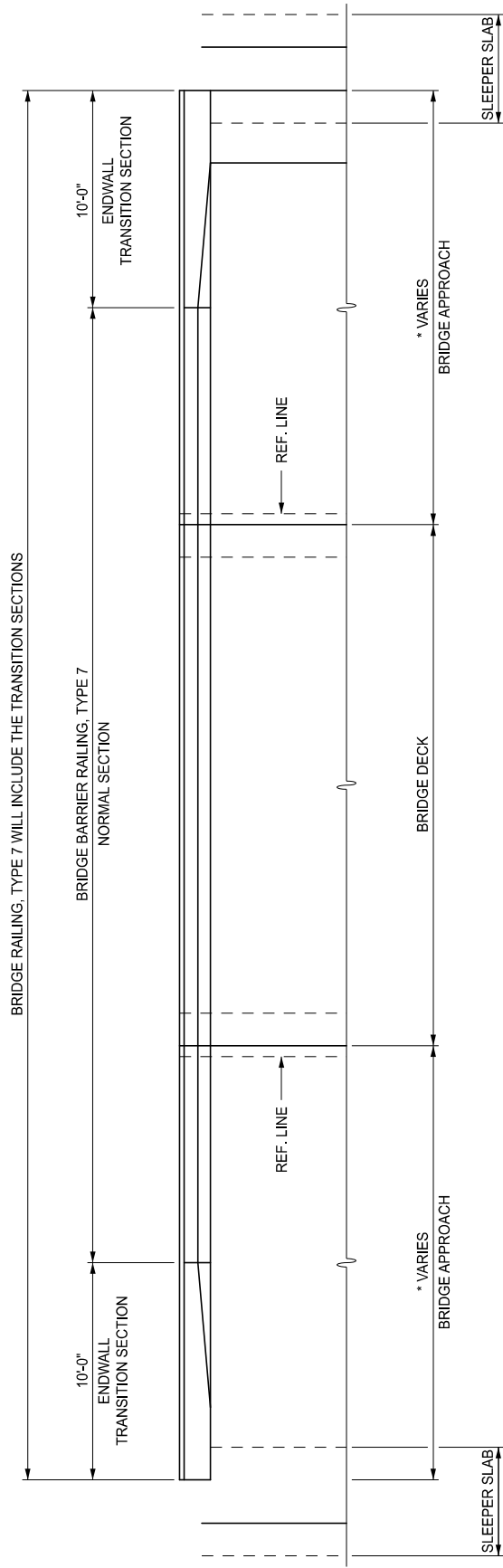
STANDARD PLAN FOR
BRIDGE BARRIER RAILING, TYPE 7

(SPECIAL DETAIL)
FHWA APPROVAL

09/02/2020
PLAN DATE

B-28-A

SHEET
3 OF 7



BRIDGE BARRIER RAILING, TYPE 7 PLAN VIEW

* DEPENDANT UPON BRIDGE APPROACH LENGTH, THE TRANSITION SECTION CAN BE PARTLY ON BRIDGE DECK OR IF NO APPROACH SLAB IS PRESENT, ENTIRELY ON THE BRIDGE DECK.



DEPARTMENT DIRECTOR
BRADLEY C. WIEFERICH, PE

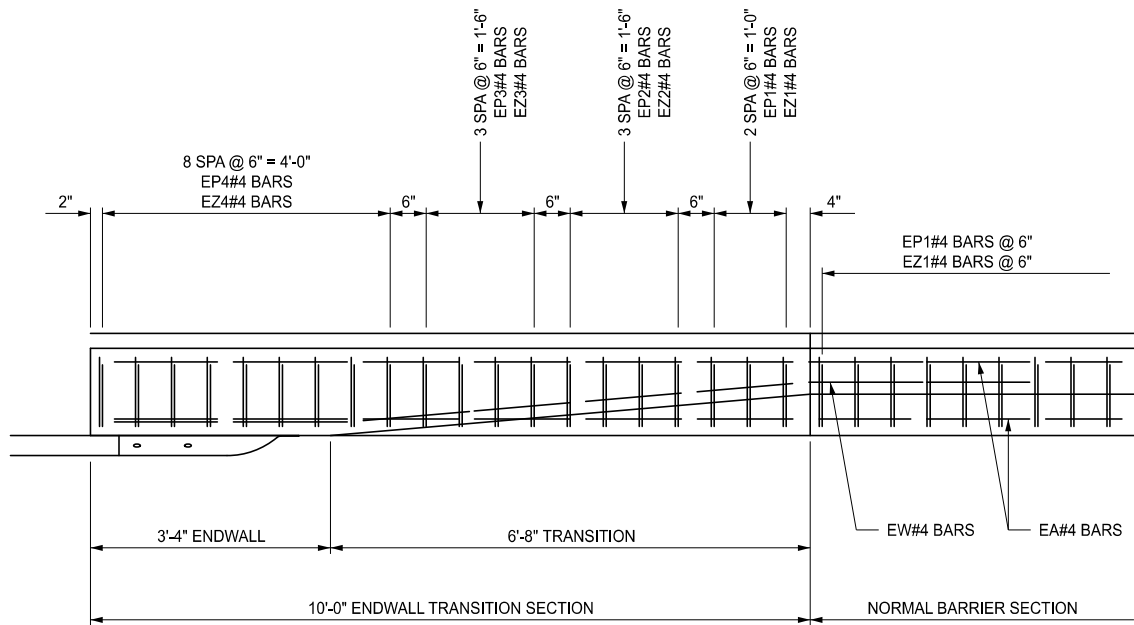
STANDARD PLAN FOR BRIDGE BARRIER RAILING, TYPE 7

(SPECIAL DETAIL)
FHWA APPROVAL

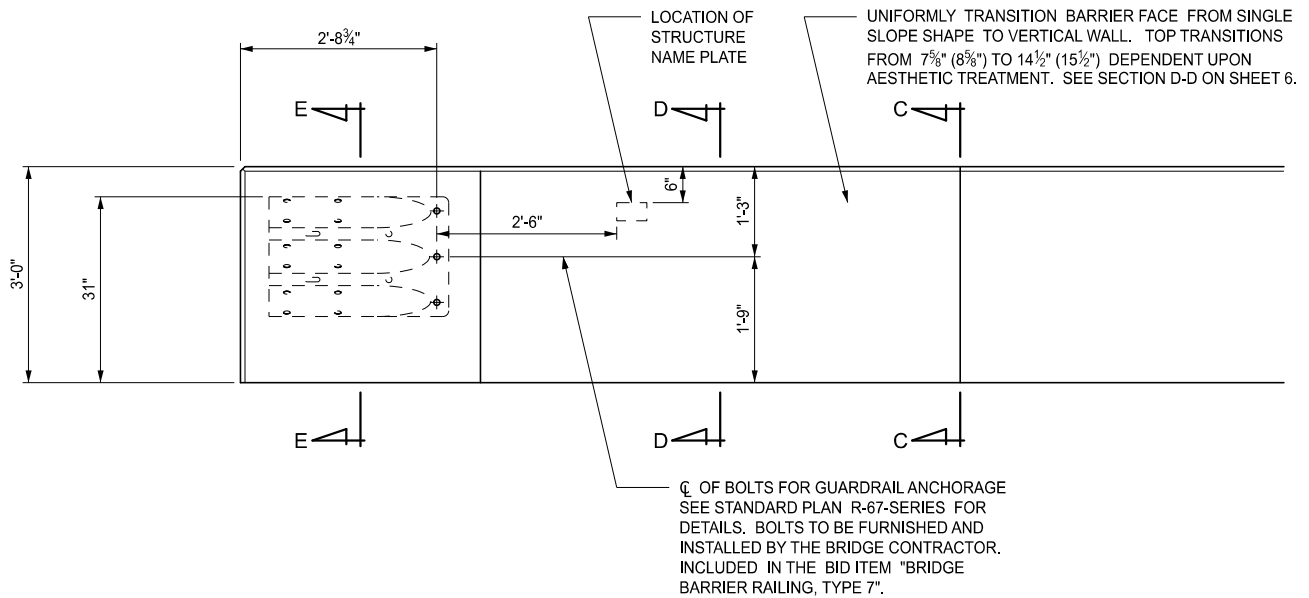
09/02/2020
PLAN DATE

B-28-A

SHEET
4 OF 7



PLAN VIEW



ELEVATION VIEW



DEPARTMENT DIRECTOR
BRADLEY C. WIEFERICH, PE

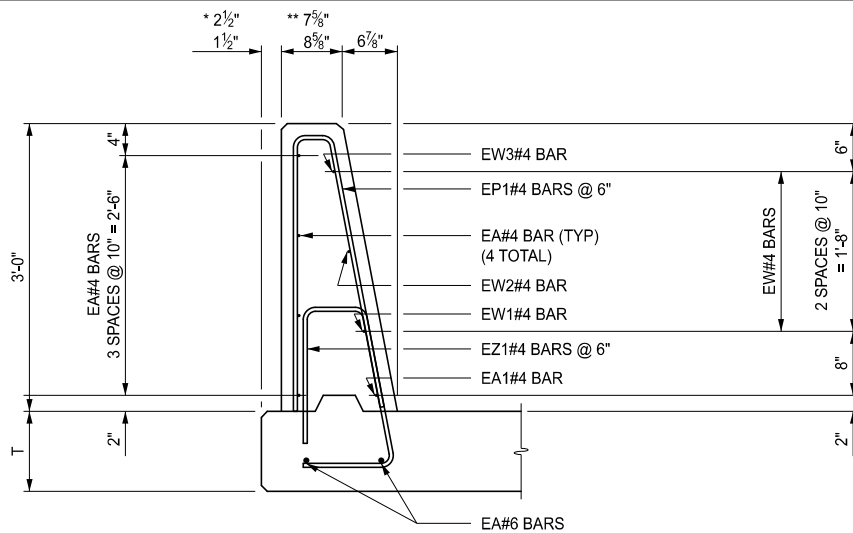
STANDARD PLAN FOR
BRIDGE BARRIER RAILING, TYPE 7

(SPECIAL DETAIL)
FHWA APPROVAL

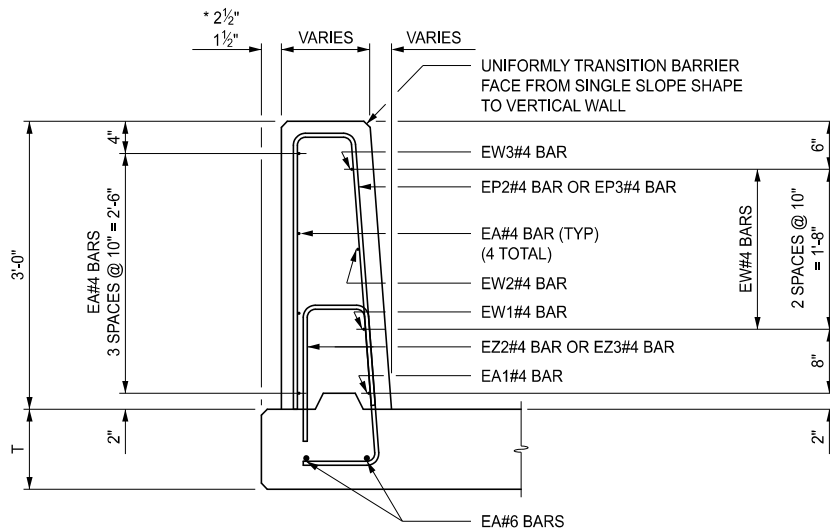
09/02/2020
PLAN DATE

B-28-A

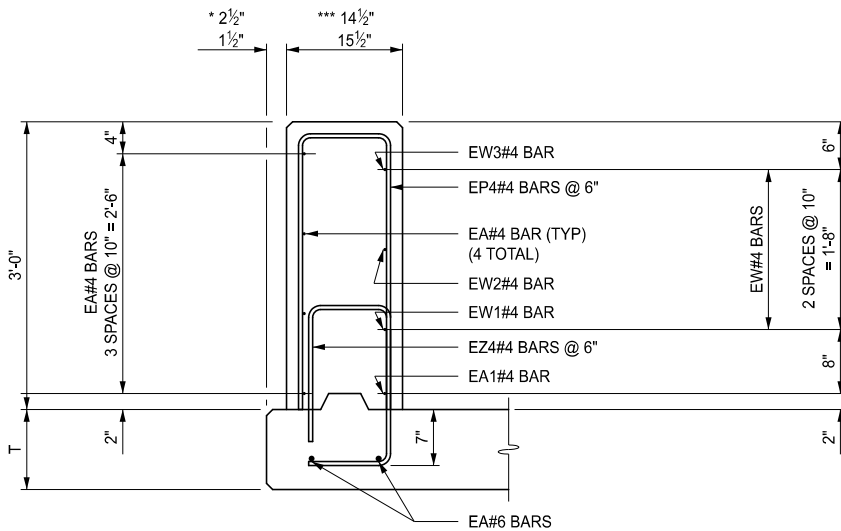
SHEET
5 OF 7



SECTION C-C



SECTION D-D



SECTION E-E

- * 2½" BRIDGE BARRIER RAILING, TYPE 7 (+ SEE NOTES)
- 2½" BRIDGE BARRIER RAILING, AESTHETIC, TYPE 7, DET 1 (+ SEE NOTES)
- 1½" BRIDGE BARRIER RAILING, AESTHETIC, TYPE 7, DET 2
- ** 7⅞" BRIDGE BARRIER RAILING, TYPE 7 (+ SEE NOTES)
- 7⅞" BRIDGE BARRIER RAILING, AESTHETIC, TYPE 7, DET 1 (+ SEE NOTES)
- 8⅞" BRIDGE BARRIER RAILING, AESTHETIC, TYPE 7, DET 2
- *** 14½" BRIDGE BARRIER RAILING, TYPE 7 (+ SEE NOTES)
- 14½" BRIDGE BARRIER RAILING, AESTHETIC, TYPE 7, DET 1 (+ SEE NOTES)
- 15½" BRIDGE BARRIER RAILING, AESTHETIC, TYPE 7, DET 2



DEPARTMENT DIRECTOR
BRADLEY C. WIEFERICH, PE

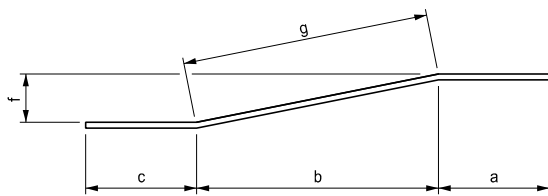
STANDARD PLAN FOR
BRIDGE BARRIER RAILING, TYPE 7

(SPECIAL DETAIL)
FHWA APPROVAL

09/02/2020
PLAN DATE

B-28-A

SHEET
6 OF 7



ENDWALL TRANSITION SECTION BARS							
	# of bars	c	b	a	g	j	
EA1	1	—	—	11'-11"	—	—	EA041111
EW1	1	3'-0"	5'-6"	3'-5"	5'-6"	1 ⁷ / ₈ "	EW041111
EW2	1	3'-0"	5'-6"	3'-5 ⁷ / ₈ "	5'-6 ¹ / ₈ "	3 ⁷ / ₈ "	EW041200
EW3	1	3'-0"	5'-6"	3'-6 ³ / ₄ "	5'-6 ¹ / ₄ "	5 ³ / ₄ "	EW041201

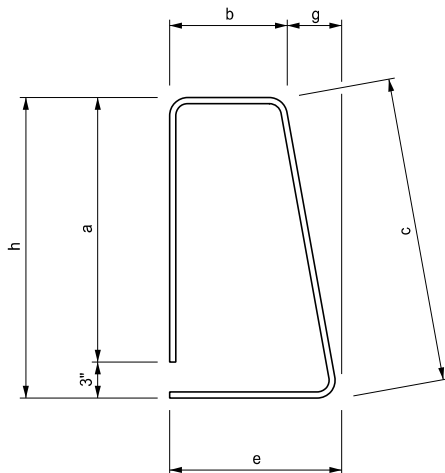
$$L = c + a + g$$

BARRIER SECTION BARS								
	# of bars	a	b	c	e	g	h	h - a
EZ1	—	1'-5"	7 ³ / ₈ "	1'-8 ³ / ₈ "	11 ¹ / ₄ "	3 ⁵ / ₈ "	1'-8"	3"

$$L = a + b + c + e$$

ENDWALL TRANSITION SECTION BARS									
	# of bars	a	b	c	e	g	h	h - a	
EZ1	3	1'-5"	7 ³ / ₈ "	1'-8 ³ / ₈ "	11 ¹ / ₄ "	3 ⁵ / ₈ "	1'-8"	3"	EZ040408
EZ2	4	1'-5"	7 ⁷ / ₈ "	1'-8 ¹ / ₄ "	10 ⁷ / ₈ "	2 ⁷ / ₈ "	1'-8"	3"	EZ040408
EZ3	4	1'-5"	8 ³ / ₄ "	1'-8"	10 ¹ / ₄ "	1 ¹ / ₂ "	1'-8"	3"	EZ040408
EZ4	9	1'-5"	10 ¹ / ₂ "	1'-8"	10 ¹ / ₂ "	—	1'-8"	3"	EZ040410

$$L = a + b + c + e$$

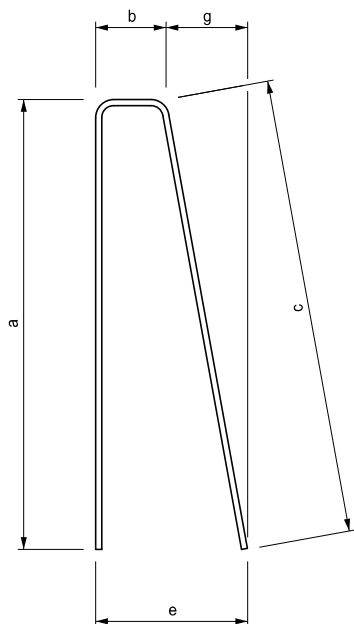


BARRIER SECTION BARS							
	# of bars	a	b	c	e	g	
EP1	—	2'-10 ¹ / ₄ "	4 ³ / ₄ "	2'-11"	11"	6 ¹ / ₄ "	EP040602

$$L = a + b + c$$

ENDWALL TRANSITION SECTION BARS							
	# of bars	a	b	c	e	g	
EP1	3	2'-10 ¹ / ₄ "	4 ³ / ₄ "	2'-11"	11"	6 ¹ / ₄ "	EP040602
EP2	4	2'-9 ⁷ / ₈ "	6 ¹ / ₄ "	2'-10 ⁷ / ₈ "	11"	4 ³ / ₄ "	EP040603
EP3	4	2'-10 ¹ / ₈ "	8 ¹ / ₄ "	2'-10 ⁵ / ₈ "	11"	2 ³ / ₄ "	EP040605
EP4	9	2'-10 ¹ / ₂ "	11"	2'-10 ¹ / ₂ "	11"	—	EP040608

$$L = a + b + c$$



NOTES:

DETAILS SHOWN ARE IN ACCORDANCE WITH CURRENT AASHTO SPECIFICATIONS.

FOR LIGHT STANDARD ANCHOR BOLT ASSEMBLY DETAILS, SEE STANDARD PLAN B-103-SERIES.

ALL WORK AND MATERIAL SHALL BE IN ACCORDANCE WITH THE STANDARD SPECIFICATIONS.

+ BACK OF BARRIER TO SLAB FASCIA MAY BE DECREASED TO 1¹/₂" (FROM 2¹/₂") AND TOE OF BARRIER SHIFTED ACCORDINGLY TO ACCOMMODATE THE NEED FOR INCREASED OR MAINTAINING SHOULDER WIDTHS. DISTANCE TO BE DETAILED ON THE PLANS.

++ BRIDGE BARRIER ORIENTATION :

PERPENDICULAR TO PLANE OF SLAB ON NORMAL CROWN SECTION AND HIGH SIDE OF SUPERELEVATION SECTION.
VERTICAL ON LOW SIDE OF SUPERELEVATED SECTION.



DEPARTMENT DIRECTOR
BRADLEY C. WIEFERICH, PE

STANDARD PLAN FOR BRIDGE BARRIER RAILING, TYPE 7

(SPECIAL DETAIL)
FHWA APPROVAL

09/02/2020
PLAN DATE

B-28-A

SHEET
7 OF 7