

# HISTORIC PROPERTIES



Clockwise from top left: I-94BL Marshall; Belle Isle Casino; M-88 Bellaire; US-2 Cut River Bridge

1



Clearing for I-196 in Grand Rapids

## The Laws

National Historic Preservation Act (Section 106)

Section 4(f) of the Department of Transportation Act of 1966

Primary resource agency is the State Historic Preservation Office (SHPO)

2

Historic resources are districts, buildings, sites, structures and objects of historic significance. They can also be called cultural resources, or above-ground resources, or historic properties.

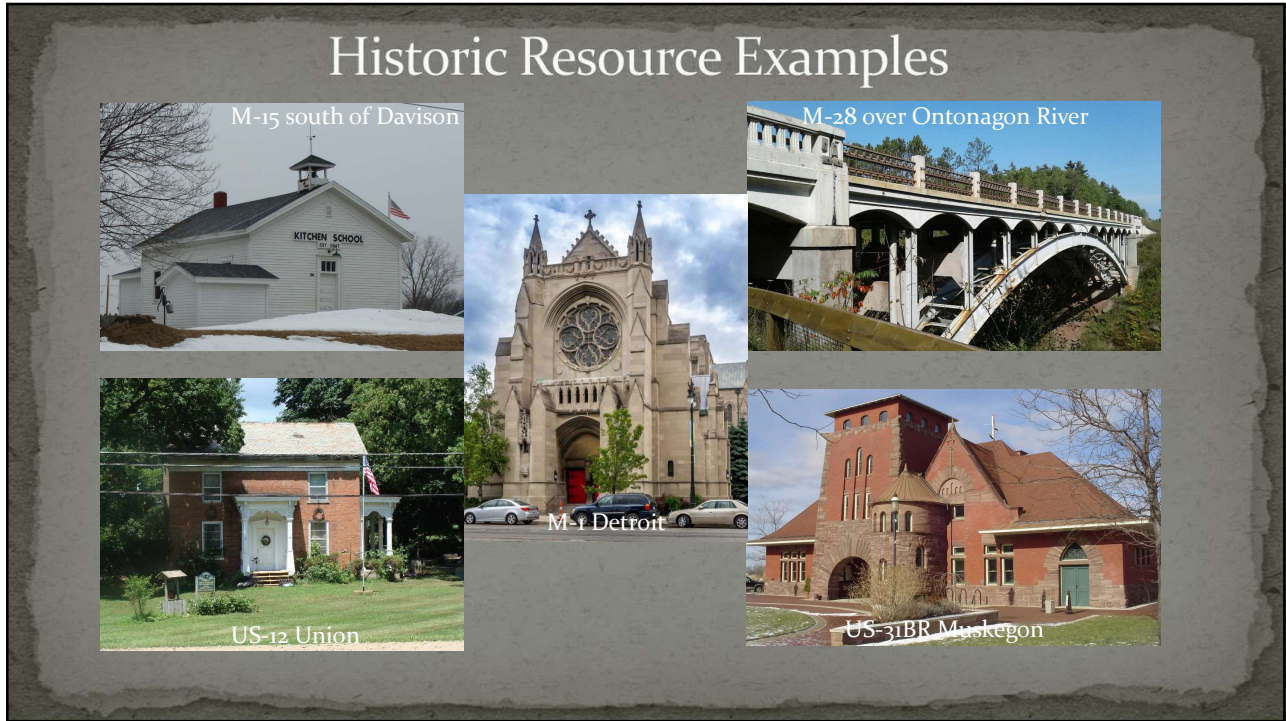


3

Examples of sites and objects...



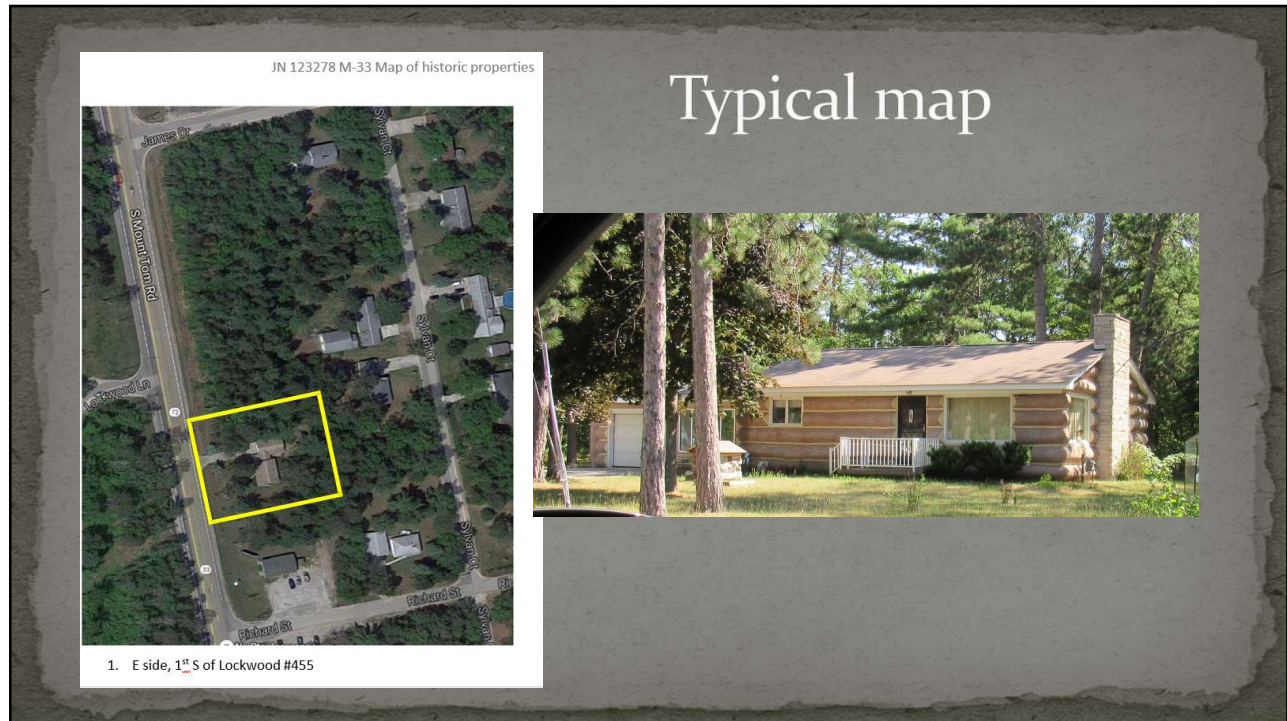
4



5



6




7


## Typical Questions

Does the project include:

- Permanent easement and/or fee ROW?
- Road widening or radius improvements beyond the edge of the existing shoulder and/or curb?
- Tree removals?
- ADA/sidewalk ramp work that will add curb behind the sidewalk, change elevations at buildings, remove landscaping, add/remove stairs?
- Drive closures?
- New guardrail, sidewalk and/or trail?



US-41 Marquette Co.



I-96 Grand Rapids

8

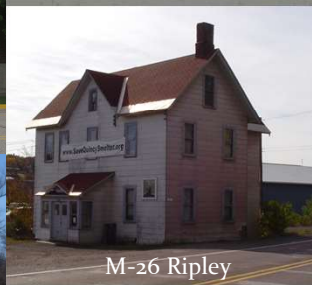
## Determining Project Impacts



- Context is key—every historic property is unique
- Answers to initial questions may lead to more questions
- Historic research, if necessary, takes time
- Working with designers to avoid any “adverse effects”

9

## Common Mitigation Measures

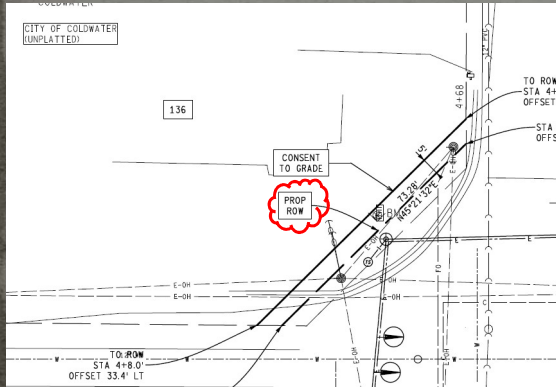


- Narrower lane widths
- Consent to grade/construct
- Tree replacements
- Preservation of historic roadside features
- Videotaping and vibration monitoring

10

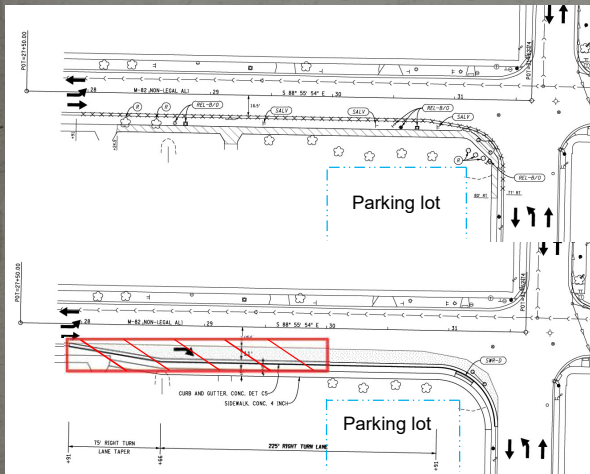
# Permanent easement and/or fee ROW

- Most common at intersections
- Laws apply no matter the size of the parcel



11

# Widening



12

## For more information:



M-79 Barry Co.



US-12 Irish Hills



M-15 Vassar

### Metro, Superior, University Regions:

Lloyd Baldwin  
517 241-2702  
[baldwinl3@michigan.gov](mailto:baldwinl3@michigan.gov)

### Bay, Grand, North & SW Regions:

Sigrid Bergland  
517 335-4229  
[berglands@michigan.gov](mailto:berglands@michigan.gov)