
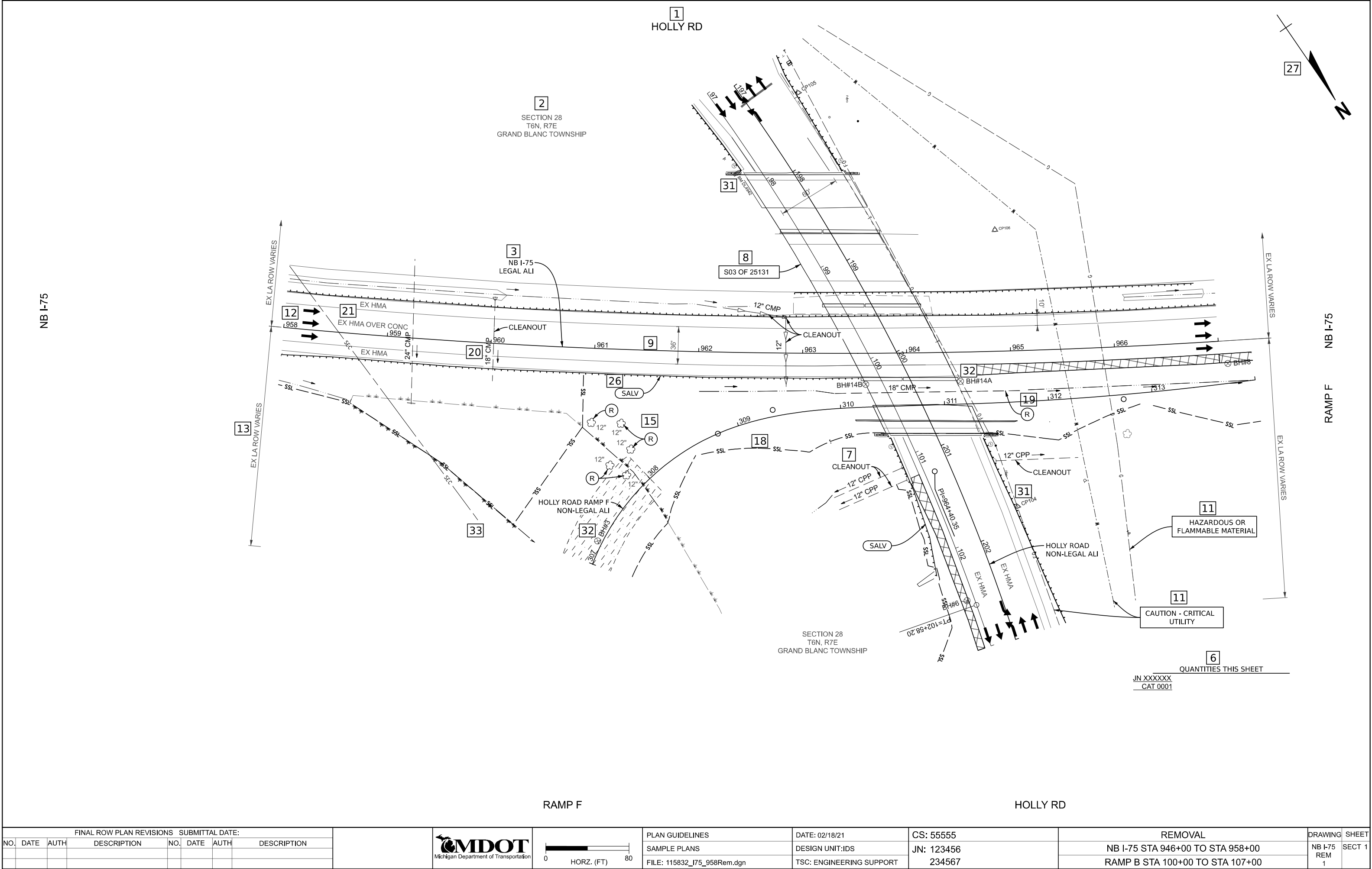


REMOVAL AND CONSTRUCTION SHEETS:

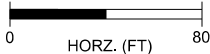
1. Label all roadway names and county drains at the outside of the sheet using MDOT_x_1.5_Mask text size.
2. Show city limits, township, range and section info. Section corner information is not shown.
3. Only show the alignments that are necessary to construct the roadway. Include stations and curve point cells. Bearings and curve labels are not shown on removal and construction sheets.
4. Curve data is not to be shown on these sheets. Curve data is only shown on the alignment sheets.
5. If there are numerous driveways, sewers or guardrail, use summary tables. Do not duplicate quantities in tables into 'Quantities This Sheet'. The pay items in the tables are to match the MDOT standard pay items and/or the specifications book. If the project has more than one funding category, specify the category number for the quantities.
6. Show all 'Quantities This Sheet' in the lower right hand corner if possible for all quantities not shown in individual tables. If the project has more than one funding category, include the category number above the quantity for which they are included.
7. Show pay items and leaders to specific work types.
8. All bridges/culverts with proposed work will be labeled with a box around the bridge/culvert number. Existing bridges/culverts with no proposed work will only have the bridge/culvert number without the box.
9. Dimension lane and paved shoulder widths within the sheet and when changes in width occur. Do not label widths at the end of the sheet limits.
10. Dimension limits of work on crossroads in proposed text size on the removal sheet only. If crossroad has an alignment, label with station. For crossroads without alignments, label distance from mainline alignment.
11. Show all existing underground utilities. Label underground telephone, water main and fiber optic lines with the 'Caution - Critical Utility' cell. Label underground gas and electric with the 'Hazardous or Flammable Material' cell. Ex sewer, sanitary sewer/sanitary force main only need to be labeled without flagging of a critical utility cell. Overhead utilities are not typically shown. Exceptions would be for high voltage electric transmission lines and other utilities that would impact how the work is completed. Label with the 'Hazardous or Flammable Material' or 'Caution - Critical Utility' cell as appropriate.
12. Include traffic flow arrows to delineate roadway lanes and movements.
13. Label overall ROW dimensions including cross road ROW at the ends of the sheet. Label proposed ROW and all areas where a consent to grade (drive, sidewalk, etc) or an easement is needed.
14. The plat/subdivision lines are shown on these sheets. The parcel lines are not shown. Label the subdivision, plat names and plat numbers on both the removal and construction sheets. House numbers and current business names are desired.
15. If existing trees are to be removed, label with the removal cell and the existing tree size and type if known.
16. On the removal sheet label all driveways with a station to the nearest foot.
17. Use the SAVE symbol on the removal and construction sheets to identify important items that need to be saved that are close to the slope stake line or that need to be saved within the construction limits.

18. Show the slope stake line.
19. Drainage structures, sewers, culverts and/or end sections being removed will be tagged with the removal cell. If end section is part of a culvert/sewer that is being removed, it does not need to be tagged separately.
20. Show existing and proposed storm and sanitary sewers with sizes and flow arrows. Show existing culverts with sizes, flow arrows and material type. In areas where there are several drainage structures an additional drainage sheet may be required to clarify the details of the proposed drainage system. If a separate drainage sheet is used, it will follow the construction sheet in the plan set. When additional drainage sheets are used the proposed storm sewer size labels can be omitted from the construction sheets. Flow arrows on existing and proposed ditch bottoms are required.
21. Label the existing roadway and driveway pavement materials on the removal sheets and outside the limits of work on the construction sheets. If text cannot fit within the pavement then a leader may be used.
22. Label and station all proposed lane and shoulder tapers and changes in width.
23. Label the 2' and 22' gore points and equate the ramp and mainline alignments at the specified locations.
24. Tag utilities that need to be relocated with the REL B/O cell or text with capsule frame. These cells should show up on the removal and construction sheet in the same location if possible.
25. Structures that need to be adjusted will need to be tagged with the ADJ or ADJ B/O cells or text with capsule frame. These cells should show up only on the construction sheets.
26. Tag items that are not included in a removal hatching pattern with the removal cell or text with circle frame. Fence and guardrail are examples of items that should be tagged with the removal cell on the removal sheets. If the item is identifiable by a line style or a cell, only the removal cell is required.
27. Place north arrow in upper right corner.
28. Saw cut locations are not labeled on the removal sheets.
29. The proposed driveway slopes shown in the driveway table are per MDOT Standard Plan/Special Detail R-29 series.
30. The proposed driveway width is measured along the back of the driveway where proposed ties into existing.
31. Show benchmarks and control points (cell and number) on both the removal and construction sheets.
32. Show soil borings and pavement cores on the removal sheets only.
33. Label all government corners, property corners and legal alignment monuments within the work limits or that have the potential to be disturbed with the "Protect Corners" cell. These should be shown on both removal and construction sheets.
34. Identify erosion control measures on the construction sheet with the 'Erosion Control Number' cell or text with circle frame. Pay for erosion control items in the main list of 'Quantities This Sheet'. Do not show key number next to pay item.

FINAL ROW PLAN REVISIONS				SUBMITTAL DATE:					NO SCALE	PLAN GUIDELINES	DATE: 02/18/21	CS: 55555, (55556, 55557)	Plan Guidelines - Sample Plans		DRAWING	SHEET
NO.	DATE	AUTH	DESCRIPTION	NO.	DATE	AUTH	DESCRIPTION			SAMPLE PLANS	DESIGN UNIT:IDS	JN: 123456	REMOVAL/CONSTRUCTION		M-123	SECT 1
										FILE: Plan Guidelines - REM_CON.dgn	TSC: ENGINEERING SUPPORT	234567			REMCON	
															1	



FINAL ROW PLAN REVISIONS SUBMITTAL DATE:							
NO.	DATE	AUTH	DESCRIPTION	NO.	DATE	AUTH	DESCRIPTION

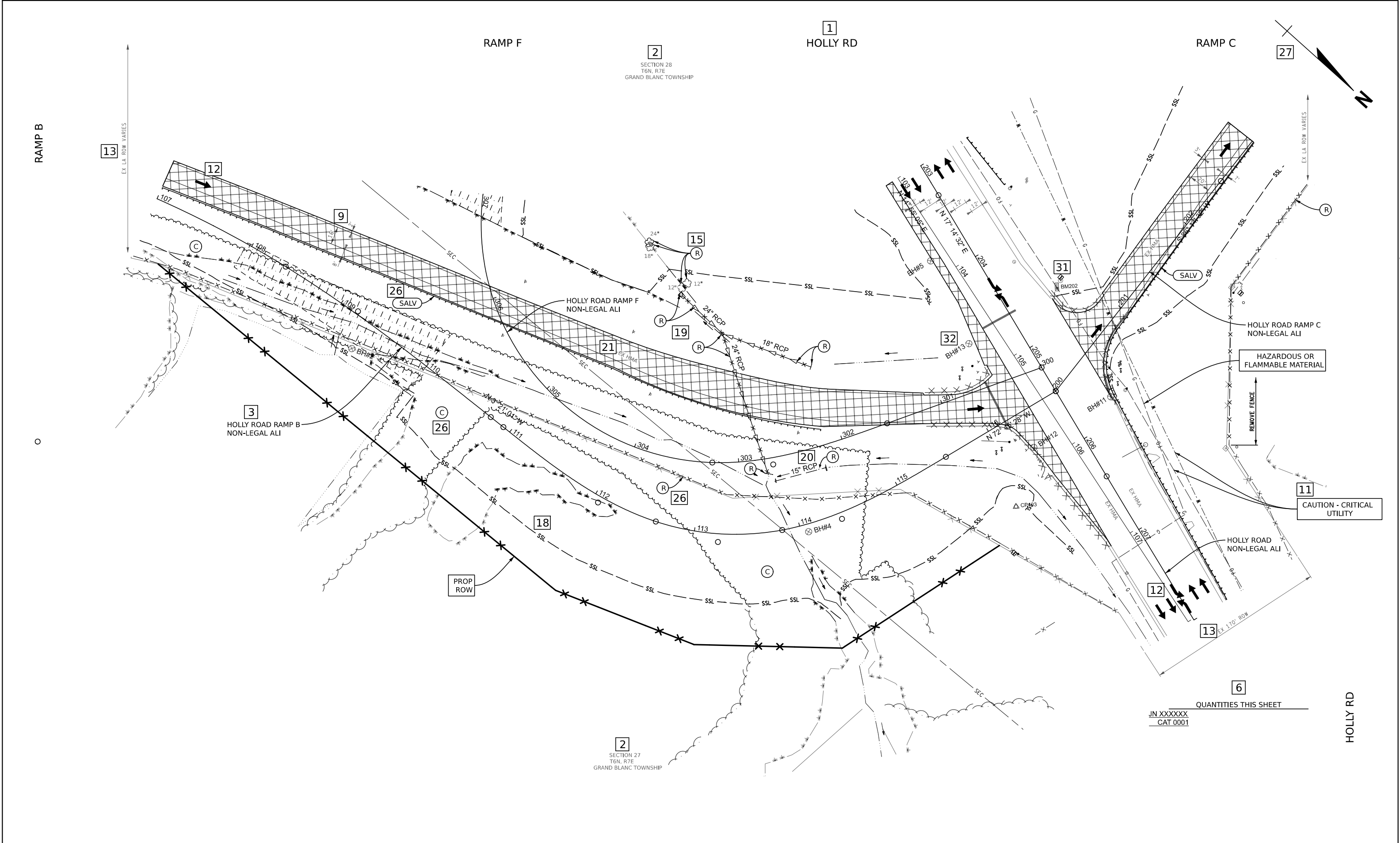




PLAN GUIDELINES
SAMPLE PLANS
FILE: 115832_I75_958Rem.dgn

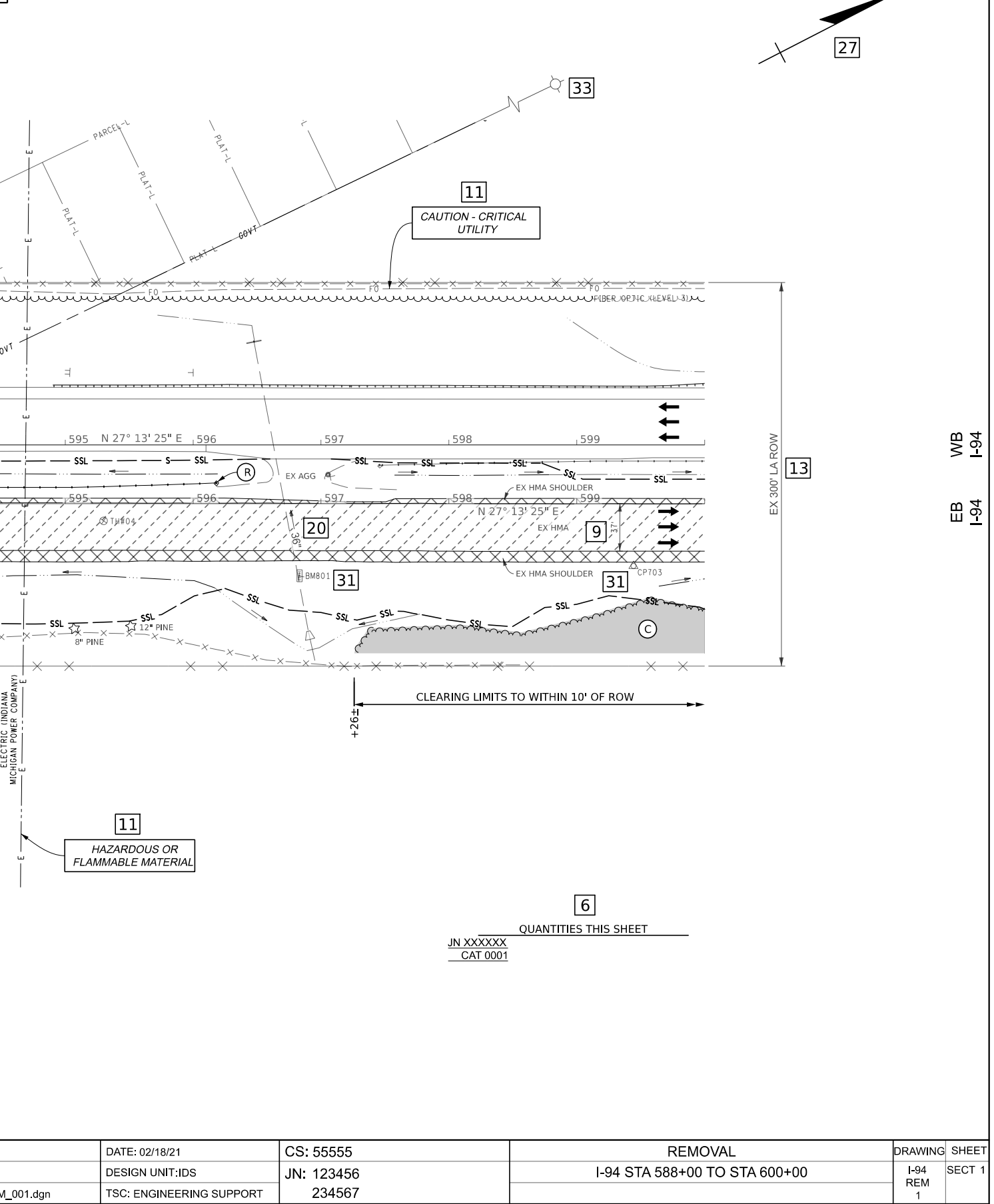
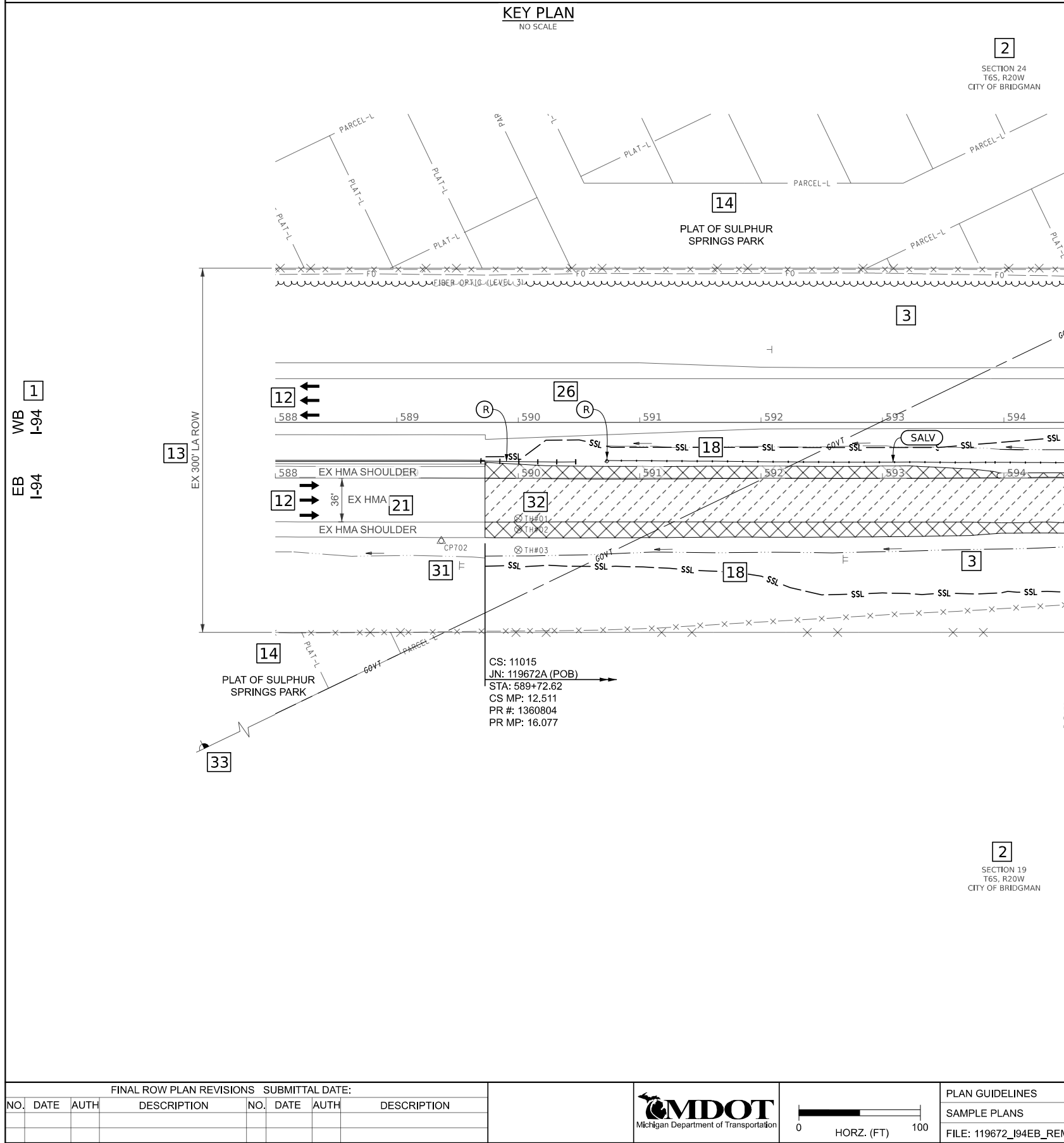
DATE: 02/18/21
DESIGN UNIT:IDS
TSC: ENGINEERING SUPPORT

CS: 55555
JN: 123456
234567

REMOVAL		DRAWING	SHEET
NB I-75 STA 946+00 TO STA 958+00		NB I-75 REM 1	SECT 1
RAMP B STA 100+00 TO STA 107+00			



FINAL ROW PLAN REVISIONS								SUBMITTAL DATE:										PLAN GUIDELINES	DATE: 02/18/21	CS: 55555	REMOVAL				DRAWING	SHEET
NO.	DATE	AUTH	DESCRIPTION				NO.	DATE	AUTH	DESCRIPTION				RAMP B STA 107+00 TO STA 117+00							RAMP B REM 1	SECT 1				
														RAMP F STA 300+00 TO STA 307+00												



CARPENTER RD

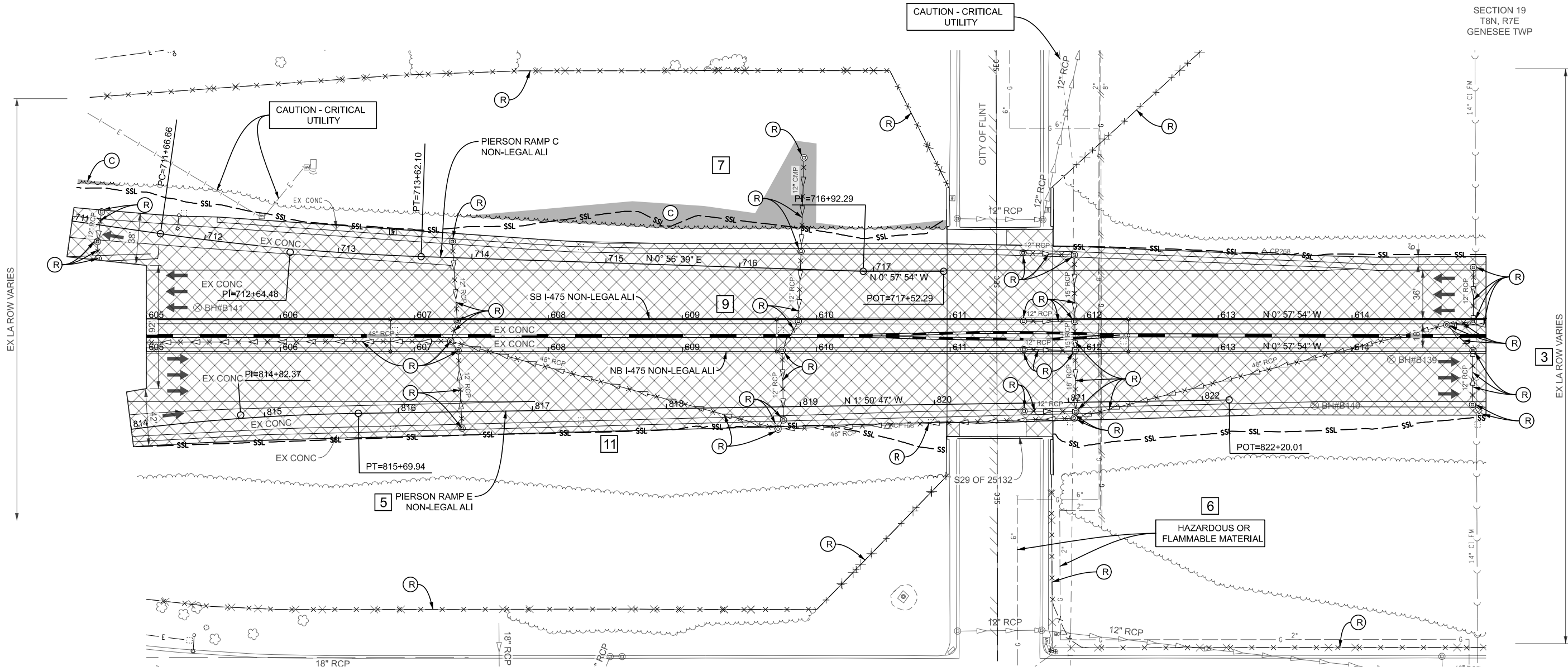


4
SECTION 30
T8N, R7E
CITY OF FLINT

SECTION 19
T8N, R7E
GENESEE TWP

1
PIERSON RD
RAMP C
SB I-475
NB I-475
PIERSON RD
RAMP E

3
SB I-475
NB I-475



SECTION 30
T8N, R7E
CITY OF FLINT

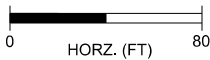
SECTION 19
T8N, R7E
GENESEE TWP

CARPENTER RD

QUANTITIES THIS SHEET		
JN 119085		
CAT 0001		
0.15	Acre	Clearing
20	Sta	Clearing, Fence
28	Ea	Dr Structure, Rem
817	Ft	Sewer, Rem, Less than 24 inch
1021	Ft	Sewer, Rem, 24 inch to 48 inch
1195	Ft	Concrete Barrier, Rem
1935	Ft	Fence, Rem
15765	Syd	Pavt, Rem
15100	Cyd	Excavation, Earth
3270	Ft	Underdrain, Rem

* INCLUDES 311 CYD TOPSOIL STRIPPING

FINAL ROW PLAN REVISIONS				SUBMITTAL DATE:			
NO.	DATE	AUTH	DESCRIPTION	NO.	DATE	AUTH	DESCRIPTION



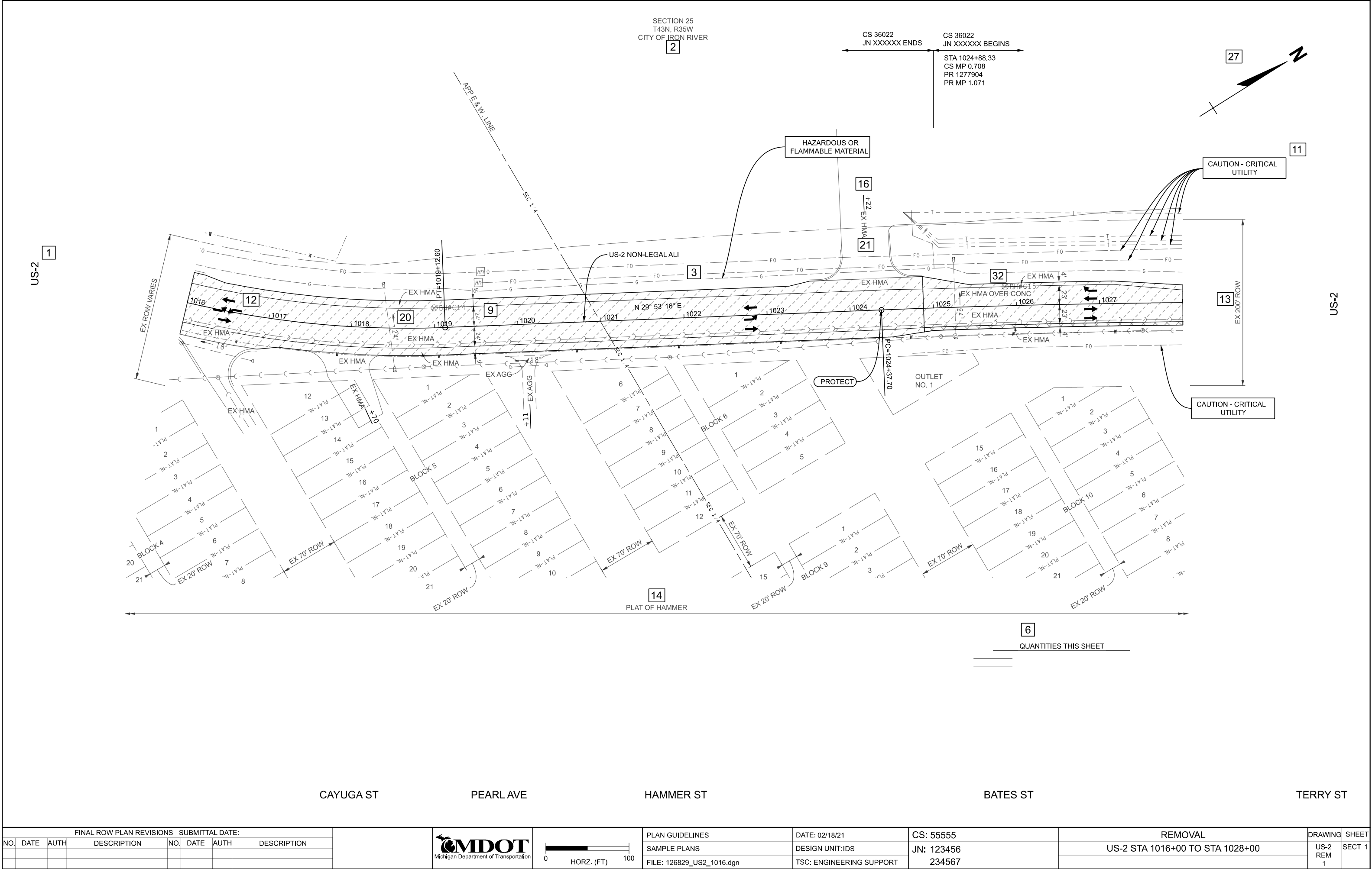
PLAN GUIDELINES
SAMPLE PLANS
FILE: 119085_I475_605Con.dgn


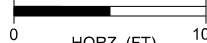
DATE: 02/18/21
DESIGN UNIT:IDS
TSC: ENGINEERING SUPPORT

CS: 55555
JN: 123456
234567

REMOVAL
I-475 STA 605+00 TO STA 615+00

DRAWING SHEET
I-475 REM 1 SECT 1



FINAL ROW PLAN REVISIONS								SUBMITTAL DATE:		 Michigan Department of Transportation	 HORZ. (FT)	PLAN GUIDELINES		DATE: 02/18/21		CS: 55555		REMOVAL		DRAWING	SHEET		
NO.	DATE	AUTH	DESCRIPTION		NO.	DATE	AUTH	DESCRIPTION				SAMPLE PLANS		DESIGN UNIT:IDS		JN: 123456		US-2 STA 1016+00 TO STA 1028+00				US-2 REM 1	SECT 1
												FILE: 126829_US2_1016.dgn		TSC: ENGINEERING SUPPORT		234567							