

## Social, Detour, Controversy

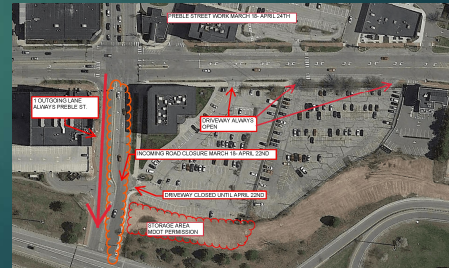
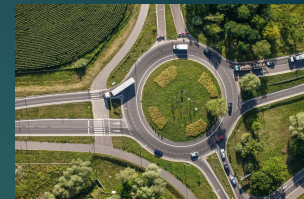


- ▶ Josh Grab
- ▶ 517-241-4548
- ▶ grabj@michigan.gov

1

## Social, Detour, Controversy

- ▶ Deal with the human side of environmental concerns
- ▶ Look at the project design details
  - ▶ The project Footprint is a Secondary Concern
- ▶ Reviews rely heavily on the PM Environmental Questionnaires
  - ▶ More Information = Better Write-up
  - ▶ The Questionnaires come out before some answers may be known.
    - ▶ Result in emails or phone calls as the project is designed.



2

## Social

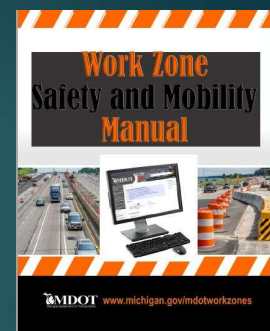
- ▶ Covers:
  - ▶ Fee ROW, Easements, Grading Permits.
  - ▶ Access to businesses and properties.
  - ▶ Pedestrian facilities



3

## Pedestrian Facilities

- ▶ Look at the Project Area using Satellite Imagery
  - ▶ Sidewalks
  - ▶ Nonmotorized Paths
  - ▶ Desire Path or "Goat Path"
- ▶ ADA upgrades
  - ▶ Needed with: new road construction, reconstruction, rehabilitation
  - ▶ Optional on road maintenance: crack filling and sealing
- ▶ Mitigation is done by keeping adjacent pedestrian facilities open, Where and When Possible.
  - ▶ The MDOT "Work Zone Safety and Mobility Manual" (Chapter 5) Located at [https://www.michigan.gov/documents/mdot/2018\\_WZSM\\_Manual\\_627313\\_7.pdf](https://www.michigan.gov/documents/mdot/2018_WZSM_Manual_627313_7.pdf)



4

## Other Aspects of Social

- ▶ Non-Motorized Trails
- ▶ Waterway Closures
- ▶ Informational Public Meetings
- ▶ Rest Area and Park N Ride Temporary Closures



5

## Detour

- ▶ Required for Review to:
  - ▶ Avoid potential environmental justice issues
  - ▶ Minimize or avoid other potential social issues
  - ▶ Maintain safe motorist movement
- ▶ For clearance I need:
  - ▶ Route of the detour
  - ▶ Duration of the detour
- ▶ Detours can trigger Controversy



6



# Detour Mitigation

- ▶ Avoiding the detour with crossovers, temporary signals, flagging
- ▶ Shorten the detour by using local streets, with permission
- ▶ Timing the project to avoid the school year, major/local festivals holiday weekends
- ▶ Using different routes for trucks and car traffic
- ▶ Using signs to indicate that businesses are open during construction



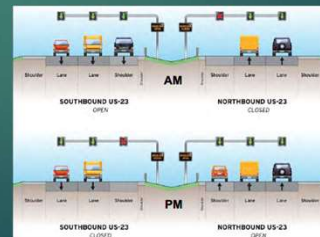
7

# Controversy

Controversy is determined on an individual project basis

Projects with Potential for Controversy include:

- ▶ Changes in traffic patterns / function
- ▶ Permanent Road Closure or "Cul-de-sac" of a road
- ▶ Removal or closure of a pedestrian bridge
- ▶ ROW encroachments
- ▶ Displacements
- ▶ Active Traffic Management (ATM) lanes
  - ▶ Ramp metering and Dynamic Shoulder Use
    - ▶ US-23 Flex Route, North of Ann Arbor



8

# Controversy

Projects with Potential for Controversy contd.

- ▶ Economic impacts
  - ▶ Removal of parking
  - ▶ Construction impacts
  - ▶ Long Detour / Bridge Closure
- ▶ Any job that MDOT Environmental or Region and Local staff feel has a chance to be controversial based on:
  - ▶ Location
  - ▶ Type of job,
  - ▶ History of similar jobs in the area

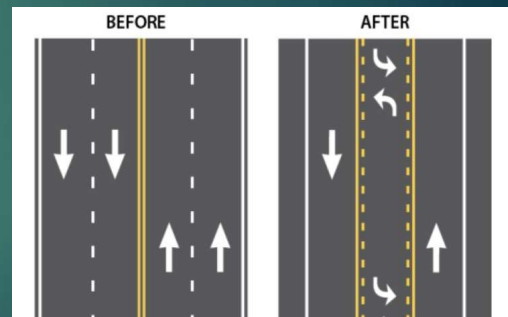


9

# Controversy

Projects that will most likely need Public Meetings:

- ▶ Road diets. 4 to 3 lanes are the most common but any reduction in capacity is considered to be a road diet
- ▶ Roundabouts



10

# Holding a Public Meeting

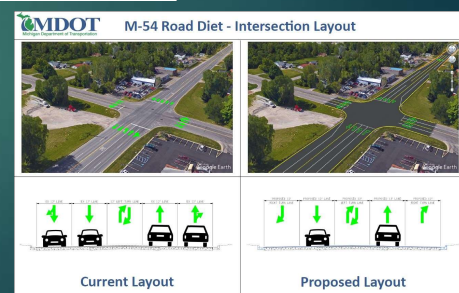
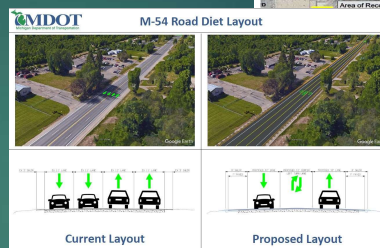
- ▶ Public Meetings can bring the opportunity to learn more about issues that matter to the community
- ▶ Public Meetings should be held by the Base Plan Date.
- ▶ There is a dilemma of having the meeting too early vs too late in the design process.



11

# Holding a Public Meeting

- ▶ Meeting Recommendations:
  - ▶ Open house, Presentation, Town Hall
  - ▶ Tuesday, Wednesday, Thursday
  - ▶ At least 2 hours long, Late Afternoon /Evening
    - ▶ 4pm - 6pm and 5pm -7pm are the most popular
  - ▶ As close to the project as possible
  - ▶ Press Release 10-14 days before the meeting
- ▶ Visual Aids:
  - ▶ Map of Project Limits
  - ▶ Boards that focus on impacted areas
  - ▶ Micro Simulation



12





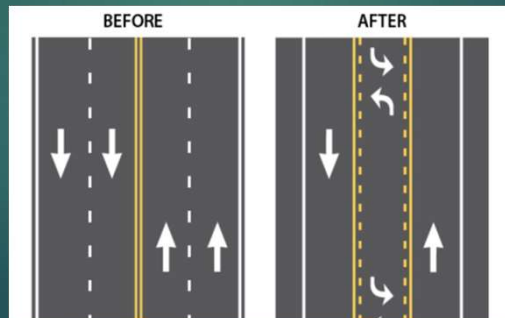
# Controversy Mitigation

- ▶ Public comments can be used to improve a projects design
  - ▶ Changes in design that can address the public's concerns include:
    - ▶ Shortening or lengthening the project limits
    - ▶ Adding pedestrian paths
      - ▶ Refuge Islands on long crosswalks
    - ▶ Adding bike lanes
    - ▶ Adding parking
    - ▶ Lengthening turning queues



15

# Thank You!



Josh Grab

517-241-4548

grabj@michigan.gov

16