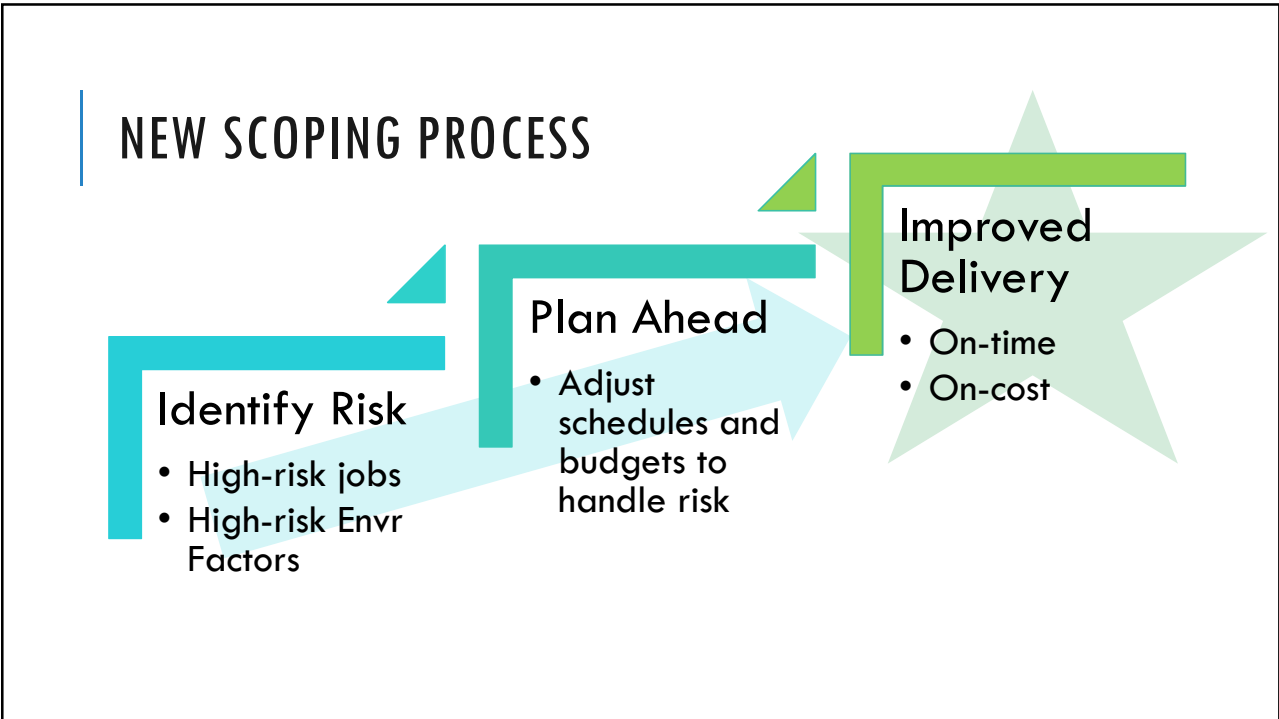


ENVIRONMENTAL SCOPING PROCESS

2019

1



2

IDENTIFY RISK: REVIEW CALL FOR PROJECTS



- ❖ Identify potential **high-risk** projects for scoping
- ❖ Projects **DO NOT** have a JN assigned & include:
 - Road** – reconstruct or widening
 - Bridge** – over water

3

IDENTIFY RISK: SCOPING FACTORS

- ❖ **Archaeology, Section 4(f), Historic, T/E Fauna, and T/E Flora**
 - **Areas of concern:** (outline areas/limits of concern)
 - **Survey:** (Y/N) explain concerns
 - **Early wetland delineation recommended:** (Y/N)
 - **Timeline:** (dates for survey)
 - **Cost:** (\$)
 - **Coordination** (external agency or consultant contract)



4

IDENTIFY RISK: SCOPING TABLE

Resource	Area of Concern	Survey	Early Wetland Delineation	Timeline	Cost	Coordination
Archaeology						
Section 4(f)						
Historic						
T/E Fauna						
T/E Flora						


5

IDENTIFY RISK: EXAMPLE



6

IDENTIFY RISK: EXAMPLE

Resource	Area of Concern	Survey	Early Wetland Delineation	Timeline	Cost	Coordination	
Archaeology	Yes*			ars	\$100,000	Yes	
Section 4(f)	No				N/A	No	
Historic	No					N/A	No
T/E Fauna	Yes*				ars	\$6,000	Yes
T/E Flora	Yes*				ars	Staff hours	Yes

7

PLAN AHEAD: EARLY NEPA REVIEW

“The MDOT Environmental Services Section will need to begin an environmental review for this project (#) years prior to the Base Plan Date to incorporate the need for seasonal surveys.”



8



PLAN AHEAD: PROVIDE SCOPING INFO

- ❖ The Environmental Coordinator will send the completed Scoping Review Memo to the **Assoc. Region Engineer of Development and Road Scoping/QA Engineer**.
- ❖ The memo will be sent to the **Region Permit Specialist** IF early *wetland delineation* is recommended.
- ❖ The **Region Bridge Engineer** will be included for *bridge projects*.

9

CLOSING THE LOOP

- ❖ When the project is programmed, PM will receive:
 - (1) **Scoping Review Memo**
 - (2) **PM Questionnaire**

at the time designated by specialists (i.e. # of years prior to the BPD)
- ❖ The Region Permit Specialist and Resource Analyst will be cc'd



10

Questions?