

Division 5

Hot Mix Asphalt Pavements & Surface Treatments

Division 5 Revision Overview

- FUSP Changes
- 501 – Reduction of HMA Mixes
- 502 – Terminology and Pay Items
- 504 – Application and Pay Items
- 505 – Double Chip Seal

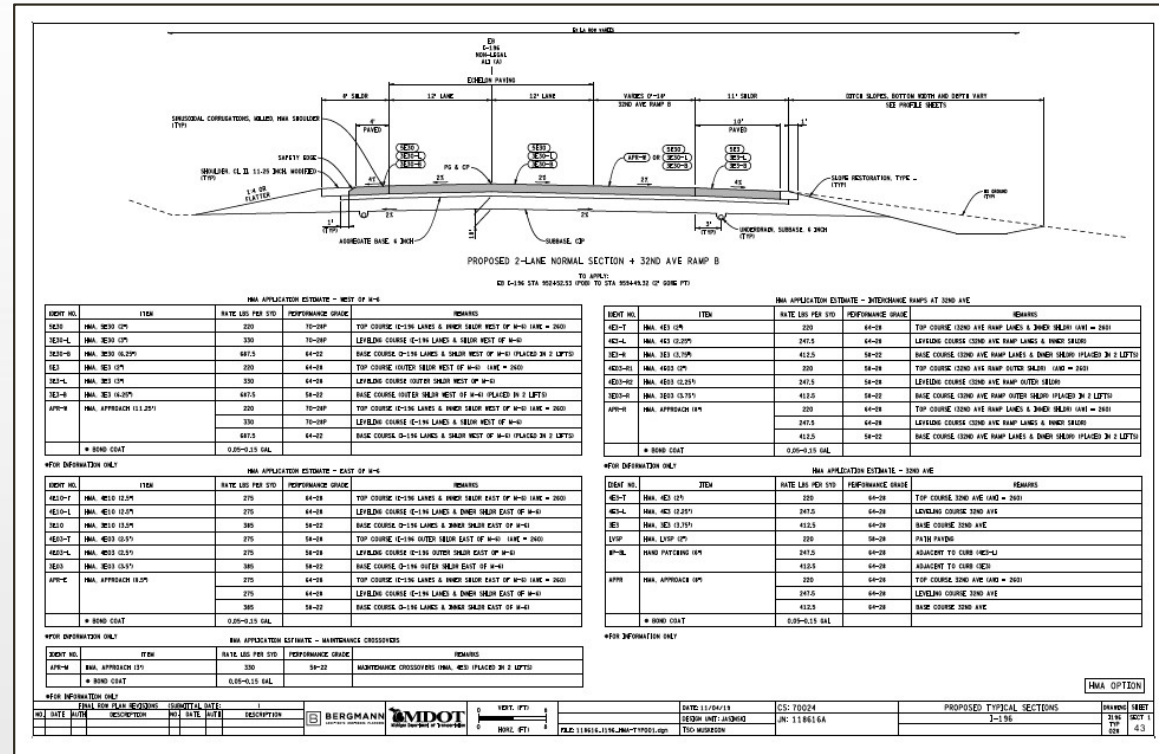
FUSPs Incorporated Into 2020 Spec Book

- 501BB – Safety Edge
- 501FF – Low Tracking Bond Coat Emulsified Asphalt
- 501GG – Cold Milling Hot Mix Asphalt Surface
- 501L – Temporary Hot Mix Asphalt Pavement Quality and Compliance
- 502B – Hot Mix Asphalt Crack Treatment and Overband Crack Fill
- 504B – Micro-Surfacing Corporations (Rumble Strips)
- Minor Changes to Tables 501.1, 501.4, 902.5, 902.7, and 902.8

Section 501
Plant Mixed HMA

Reduction of HMA Mixes

- LVSP and E03 combined into EL
- E1 and E3 combined into EML
- E10 and E30 combined into EMH
- E50 eliminated and replaced with EH
- Gap Graded Superpave (GGSP) renamed to Stone Matrix Asphalt (SMA) to be consistent with national standards



Reduction of HMA Mixes

MICHIGAN DESIGN MANUAL ROAD DESIGN

6.03.09A1d (continued)

Hot Mix Asphalt (HMA) Mixture Selection Guidelines

North, Grand, Bay, Southwest and University Region

Mixture Type	HMA Mainline and Ramps		High Stress HMA	
EH, SMA	PG 70-28P PG 64-22	Top & Leveling Course Base Course	PG 76-28P PG 64-22	Top & Leveling Course Base Course
EML, EMH	PG 64-28 PG 58-22	Top & Leveling Course Base Course	PG 70-28P PG 58-22	Top & Leveling Course Base Course
EL	PG 58-28 PG 58-22	Top & Leveling Course Base Course	PG 64-28 PG 58-22	Top & Leveling Course Base Course

Superior Region

Mixture Type	HMA Mainline and Ramps		High Stress HMA	
EL, EML, EMH	PG 58-34 PG 58-28	Top & Leveling Course Base Course	PG 64-34P PG 58-28	Top & Leveling Course Base Course

Metro Region

Mixture Type	HMA Mainline and Ramps		High Stress HMA	
EH, SMA	PG 70-22P PG 64-22	Top & Leveling Course Base Course	PG 76-22P PG 64-22	Top & Leveling Course Base Course
EML, EMH	PG 64-22 PG 58-22	Top & Leveling Course Base Course	PG 70-22P PG 58-22	Top & Leveling Course Base Course
EL	PG 58-22	Top, Leveling & Base Course	PG 64-22 PG 58-22	Top & Leveling Course Base Course

NOTES:

- For shoulders paved greater than or equal to 8 feet or in a separate operation, use PG 58-28 for top and leveling course and PG 58-22 for base course for all Regions
- For Temporary Roads, commercial and private Approaches, Wedging, and Hand Patching, use PG 64-22 for all Regions except Superior and North, use PG 58-28.

- Major Changes Made to Tables 501.2, 501.3 and 902.6
 - New Mix Design Designations
 - Changes mostly relevant to Mix Designers
- Minor changes to Tables 501.1, 501.4 and 902.5
- Incorporation of FUSP 501BB, 501 FF, 501 GG, and 501 L
- Changes made to Hot Mix Asphalt (HMA) Mixture Selection Guidelines in the Road Design Manual

Section 502

HMA Crack Treatment

Terminology and Pay Items

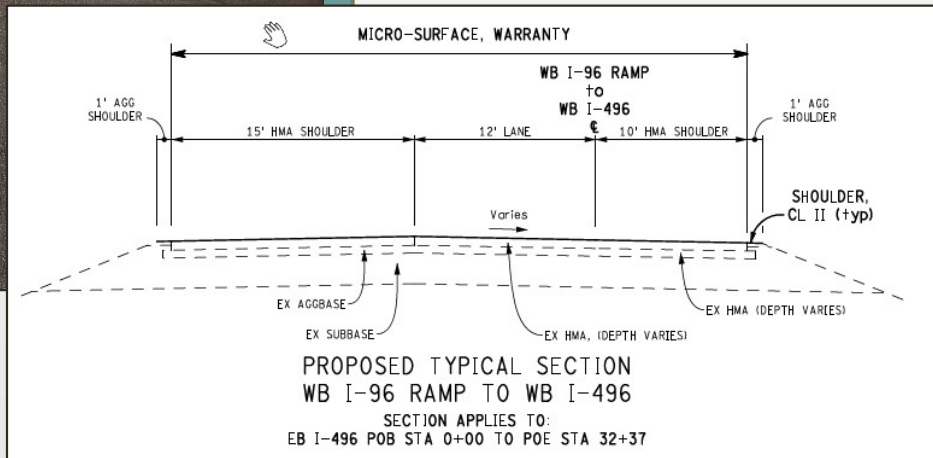
- Working Crack → Primary Crack
- HMA Crack Treatment vs Overband Crack Fill
- Incorporated FUSP 502B
 - Pretreatment requirements if not standalone
- Updated pay items



Section 504

Micro-Surfacing

Application and Pay Items



- Application width of Micro-Surface
 - Confusion if shoulders were included
 - As indicated on the plans
- Incorporation of FUSP 504B
 - Centerline and shoulder corrugations
- Pay Items

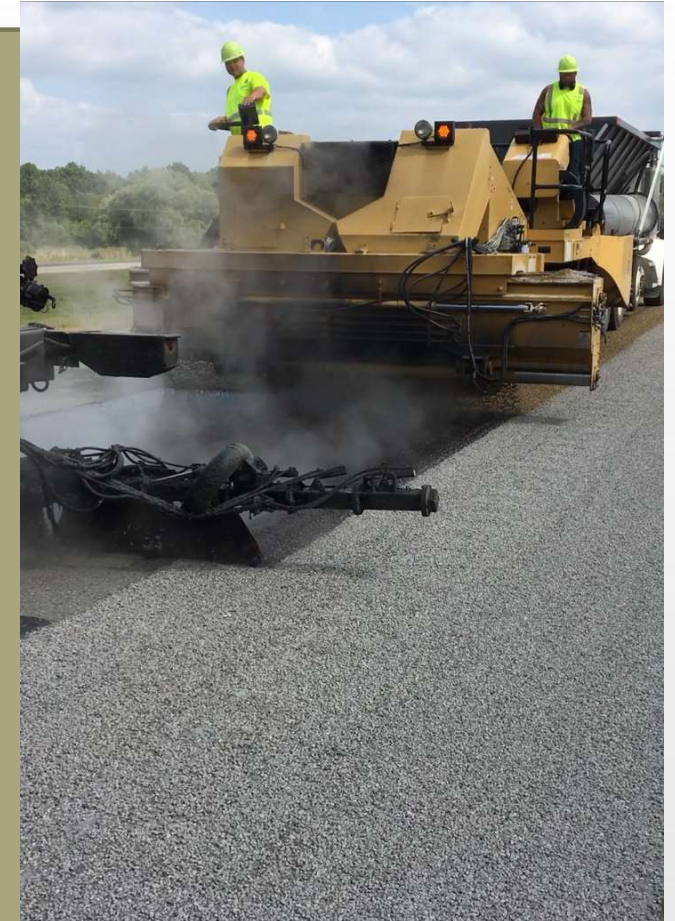
• Micro-Surface, Rutfill	Ton
• Micro-Surface	Syd
• Micro-Surface, Single, Cse	Syd
• Micro-Surface, Longitudinal	Ft

Section 505

Chip Seals

Double Chip Seal

- Double Chip Seal seasonal limitations
 - Lower peninsula south of M-46
 - August 1st → September 1st
- Incorporate FUSP 506B
 - Include CST aggregate
 - Tables 902.7 and 902.8
- Pavement marking removal not included
 - Special markings



Division 6

Portland Cement Concrete for Pavements

Division 6 Revision Overview

- FUSP Changes
- 601 – Reserved
- 602 – Concrete Grades and Pay Items
- 603 – Pay Items
- 604 – Removed
- 605 – Removed

FUSPs Incorporated Into 2020 Spec Book

- 602B – Jointing layout plan for intersections
- 602D – High performance PCC pavement (Division 10)
- 602E – PCC pavement, bridge approach, reinforced
- 602I – Coatings for dowel bars, modified (914)
- 603A – Longitudinal grooving of concrete pavement
- 604A – QC and acceptance of PCC (For Local Agency Only) (Division 10)
- 604B – QC and acceptance of PCC (Division 10)

Section 601
Portland Cement Concrete for
Pavements

Reserved

**Moved To
Section 1001**

Section 602

Concrete Pavement Construction

Concrete Grade and Pay Items

- Concrete Grades Changing
- Incorporated FUSP 602B, 602D, 602E and 602I
- Pay Items associated with old FUSPs

Mix Table Conversion

Mix Table Conversion							
New Concrete Grades	3000	3500	3500HP	4000	4000HP	4500	4500HP
Old Concrete Grades	S3, P2	S2, P1, T	S2M, P1M	S1	S1M	D	DM

Section 603

Concrete Pavement Restoration

Pay Items

- Incorporated 603A
 - Diamond Grooving Conc Pavt
 - Diamond Grinding and Grooving Conc Pavt



Section 604
Contractor Quality Control for
Concrete

Removed

**Moved To
Section 1002**

Section 605

Quality Assurance for Concrete

Removed

**Moved To
Section 1003**

Questions

THE END

