

MDOT Survey Workflow: SS4 HEC-RAS file creation

Overview:

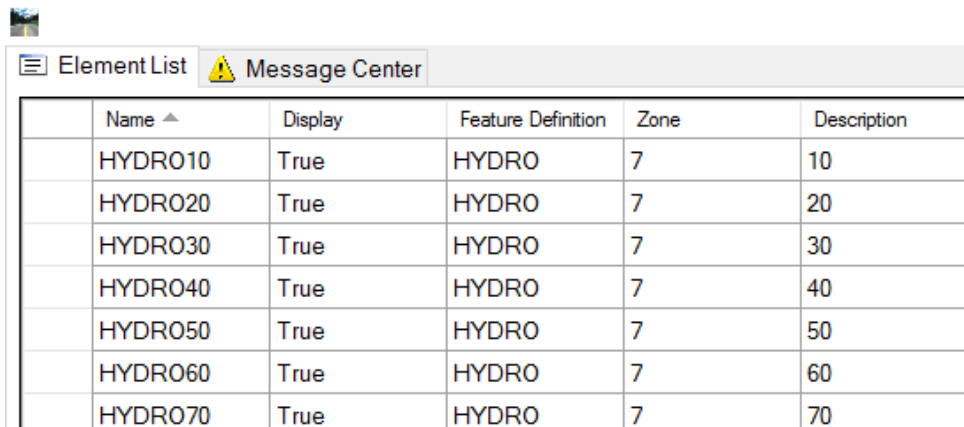
This document is a “how to” guide to create a HEC-RAS file within PowerGEOPAK SS4. Steps to make sure your 3D file containing your hydro chains is setup correctly and how to use the MDOT tool “HEC-RAS Report”.

Requirements:

- A 3D MDOT dgn drawing containing the hydro chains for the report.
- MDOT’s latest workspace resource files.

Step By Step:

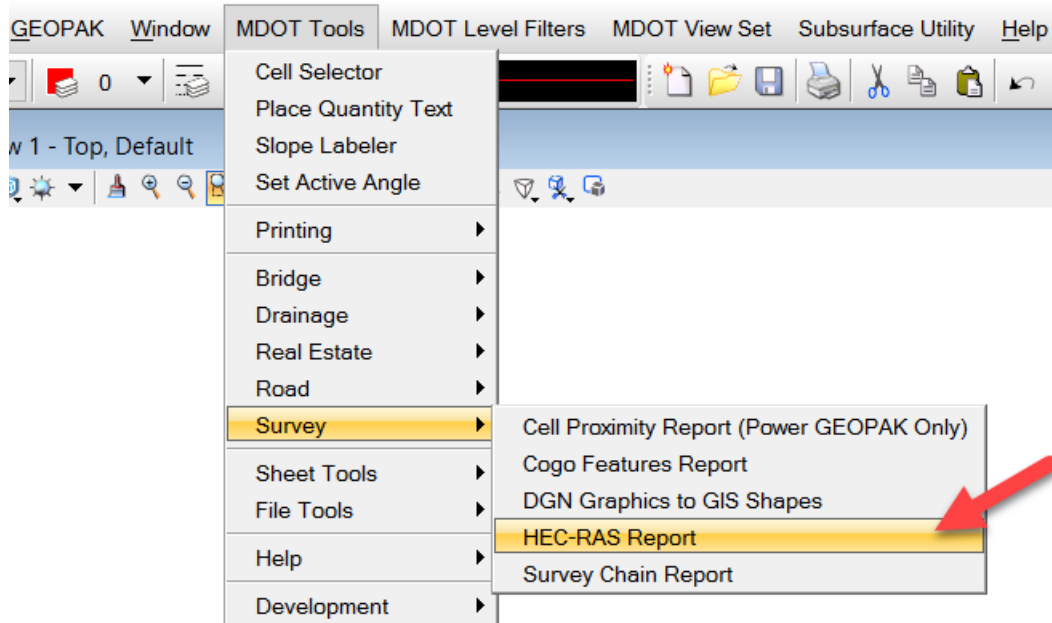
1. Within your 3D file ensure that the names of the hydro chains are named properly, one digit numbers will not sort correctly.



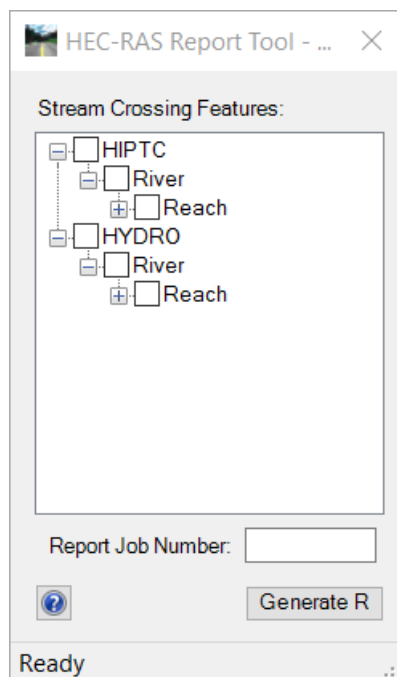
The screenshot shows a software window titled "Element List" with a "Message Center" icon. It contains a table with the following data:

Name ▲	Display	Feature Definition	Zone	Description
HYDRO10	True	HYDRO	7	10
HYDRO20	True	HYDRO	7	20
HYDRO30	True	HYDRO	7	30
HYDRO40	True	HYDRO	7	40
HYDRO50	True	HYDRO	7	50
HYDRO60	True	HYDRO	7	60
HYDRO70	True	HYDRO	7	70

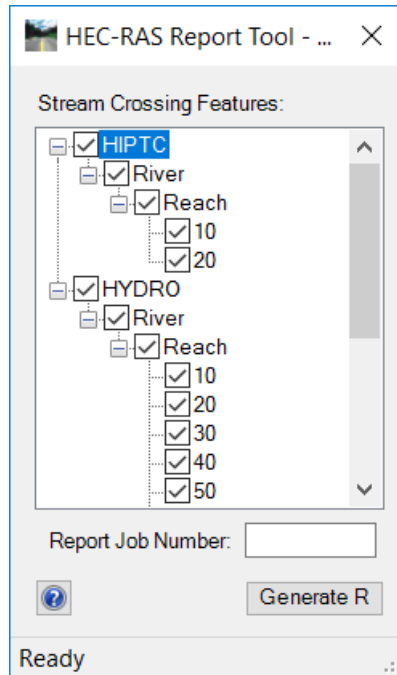
2. Then open the HEC-RAS Report tool.



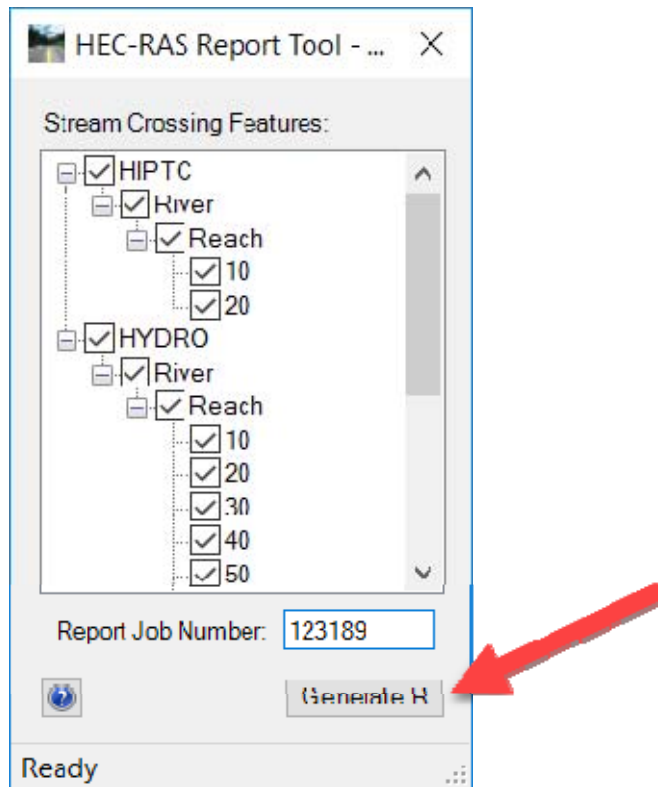
3. This will bring up the following HEC-RAS report Tool Box.



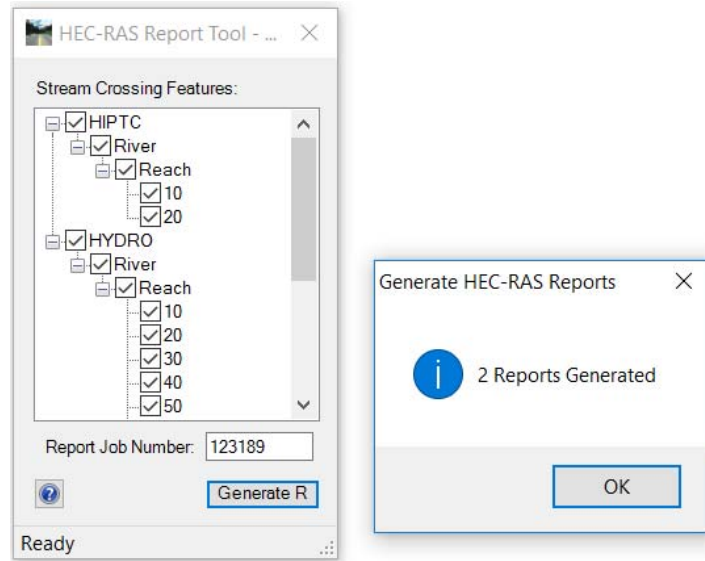
4. Click the box to the left of HIPTC to check all the High Point chains. Click the box to the left of HYDRO to select all of the HYDRO chains.



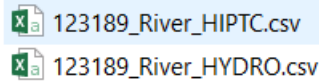
5. To generate a report, enter a job number in the box provided. You can enter Text or numbers here. Then click on GENERATE REPORT.



- When completed the report/reports will be generated. The results will be in the folder in which the dgn resides.



- Open the .csv file to see the results.



The image shows a screenshot of an Excel spreadsheet titled '123189_River_HYDRO.csv'. The spreadsheet contains the following data:

	A	B	C	D	E	F	G	H	I	J	K	L
1	River	Reach	RS	X	Y	Z	Feature	Description				
2	River	Reach	10	19620123	378960.2	1144.41	XYZ	TREES				
3	River	Reach	10	19620117	378970.9	1144.24	XYZ					
4	River	Reach	10	19620113	378981.3	1144.22	VEGE	TREES - BRUSH				
5	River	Reach	10	19620103	378989.8	1143.93	XYZ					
6	River	Reach	10	19620097	378999.4	1143.79	XYZ					
7	River	Reach	10	19620091	379008.4	1143.46	XYZ					
8	River	Reach	10	19620083	379019	1143.37	XYZ					
9	River	Reach	10	19620079	379027.6	1143.03	XYZ					
10	River	Reach	10	19620076	379035.9	1143.5	XYZ					
11	River	Reach	10	19620072	379047.7	1142.87	XYZ					

- Any questions? Contact MDOT Survey Support at MDOT-Survey_Support@michigan.gov