

## Outline

- BOBS Organization Structure
- Bridge Type and Composition/Terminology
- Asset Management
- Bridge Maintenance
- Bridge Design Process
- Bridge Plans
- Road and Bridge Coordination
- **Request for Action (RFA) Projects**
- Design in Construction
- Accelerated Bridge Construction (ABC)
- Wrap up



1

## Request For Action (RFA) Projects

2

What is a  
Request for  
Action (RFA)?

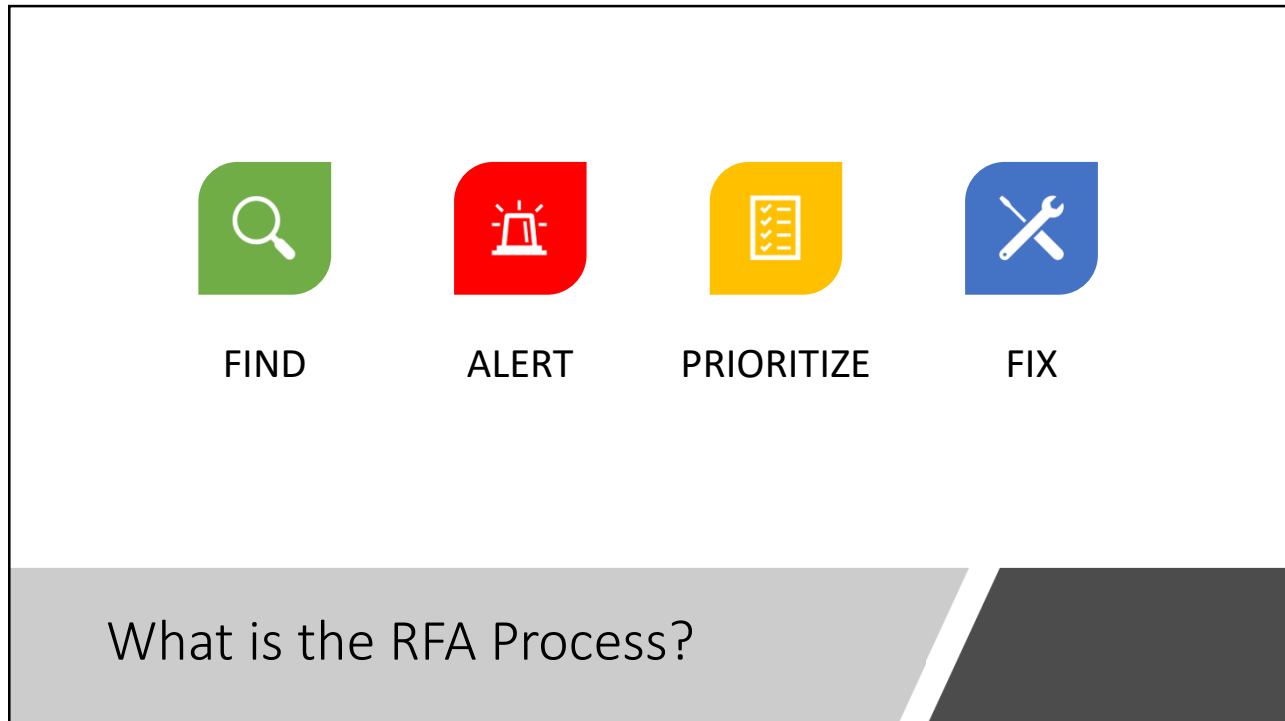
- Critical deterioration/damage to a bridge or structure found during a routine inspection or site visit

3

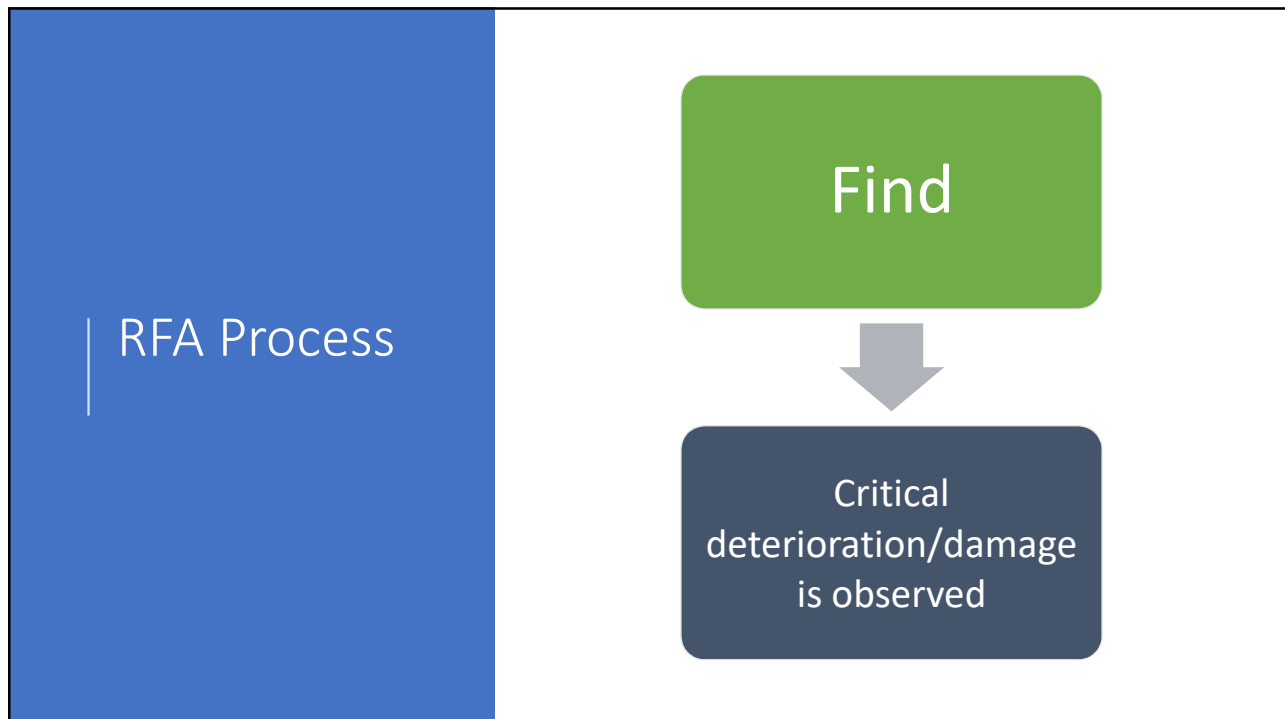
Oh No!



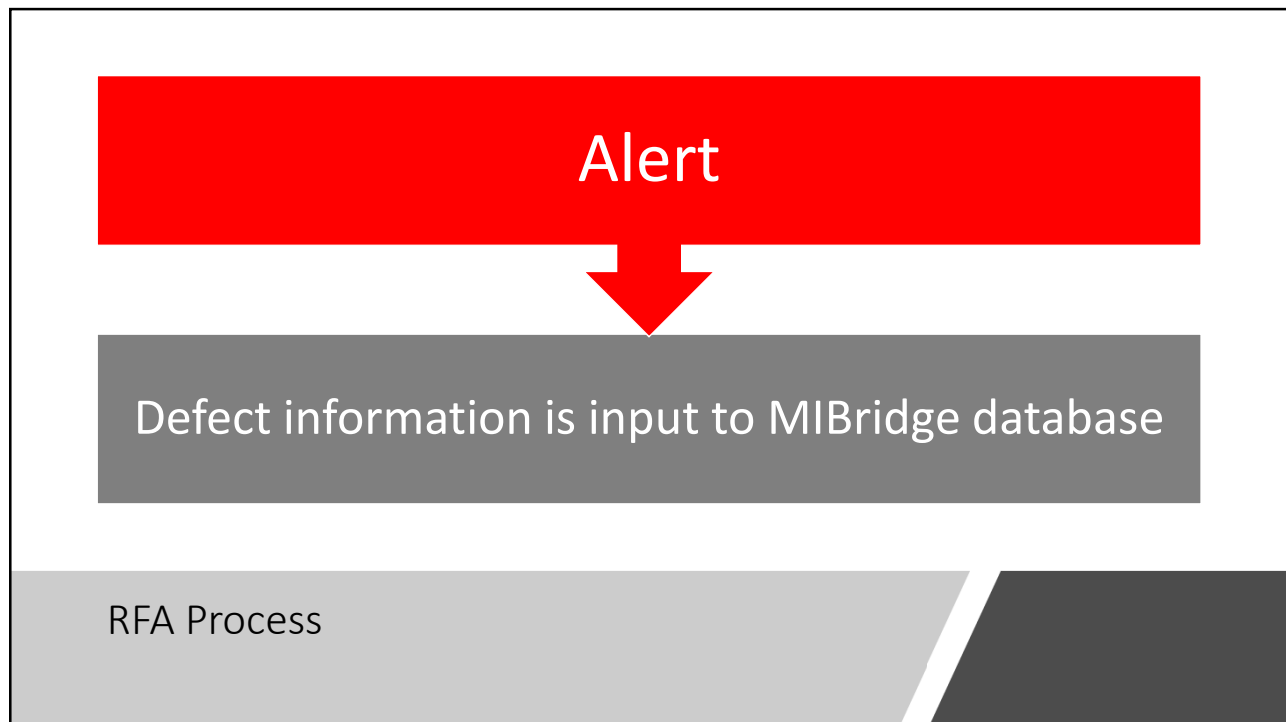
4



5



6



7



8

RFA Priority Numbers

Priority Level 1 – Emergency

ASAP Repair

Fix by MDOT forces or by  
Emergency Contract

9

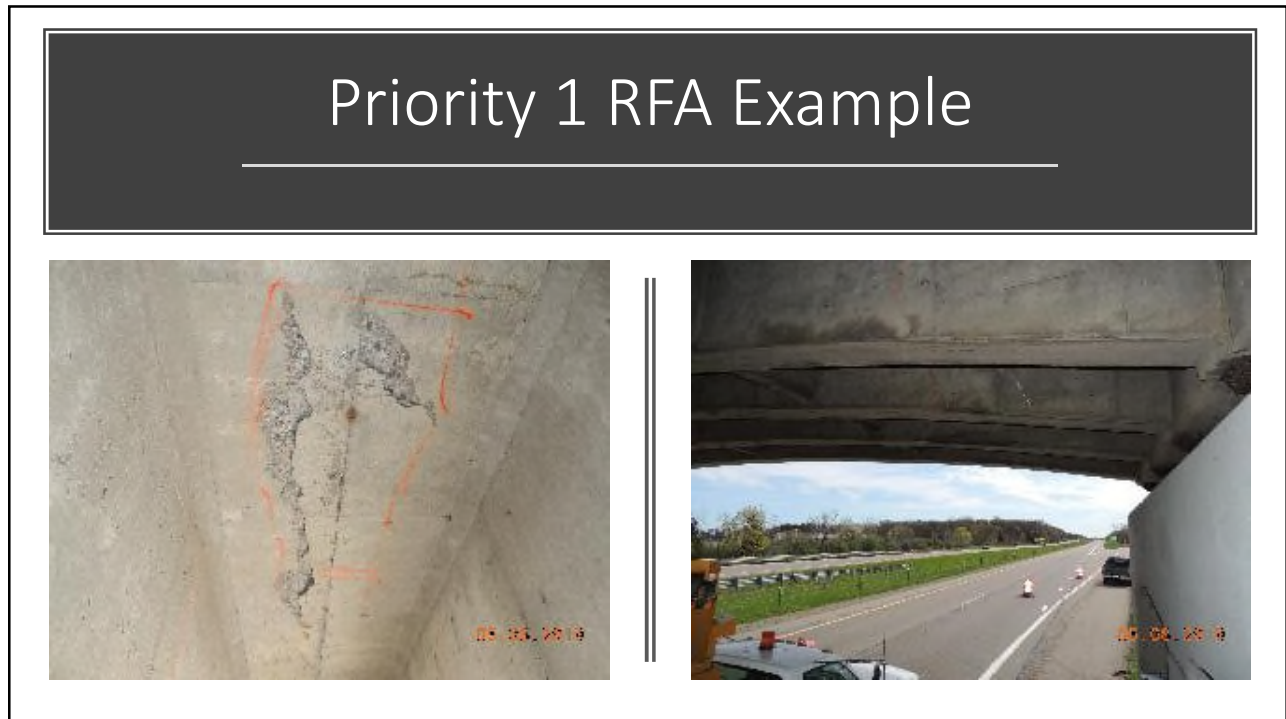


Priority 1 RFA Example

10



11



12

RFA Priority  
Numbers

## Priority Level 2 – Critical

To be completed within 90 days

13



Priority 2 RFA Example

14



15

RFA Priority Numbers

Priority Level 3 – Primary

To be completed within 12-18 months

16





# Priority 3 RFA Example


17




# Priority 3 RFA Example

18


## RFA Priority Numbers



Priority Level 4 –



No Action or Action Down the Road

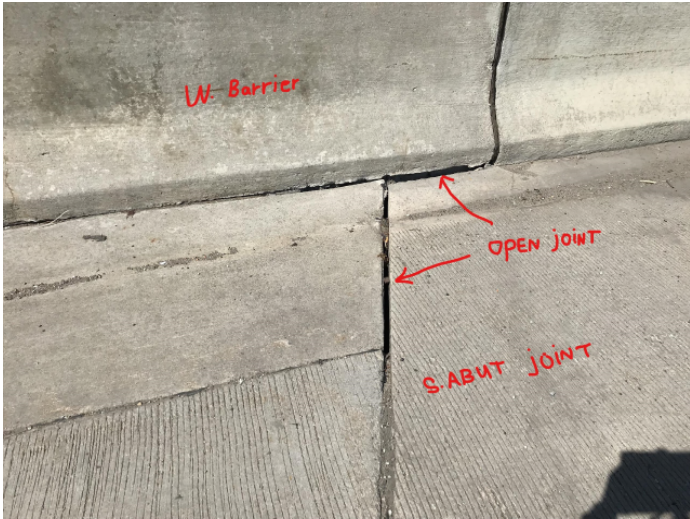


Fix thru normal call for projects or routine maintenance

19

## Priority 4 RFA Example

---



20

Guess the  
RFA Priority



21

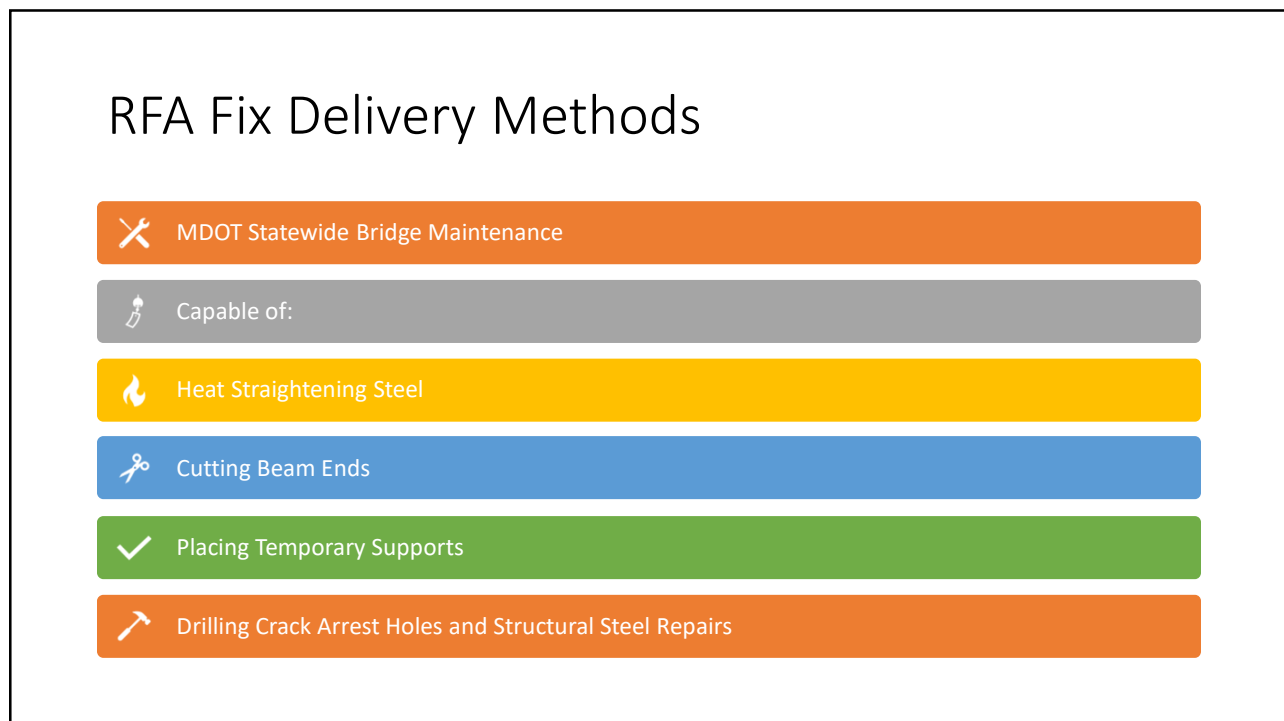


Guess the  
RFA Priority

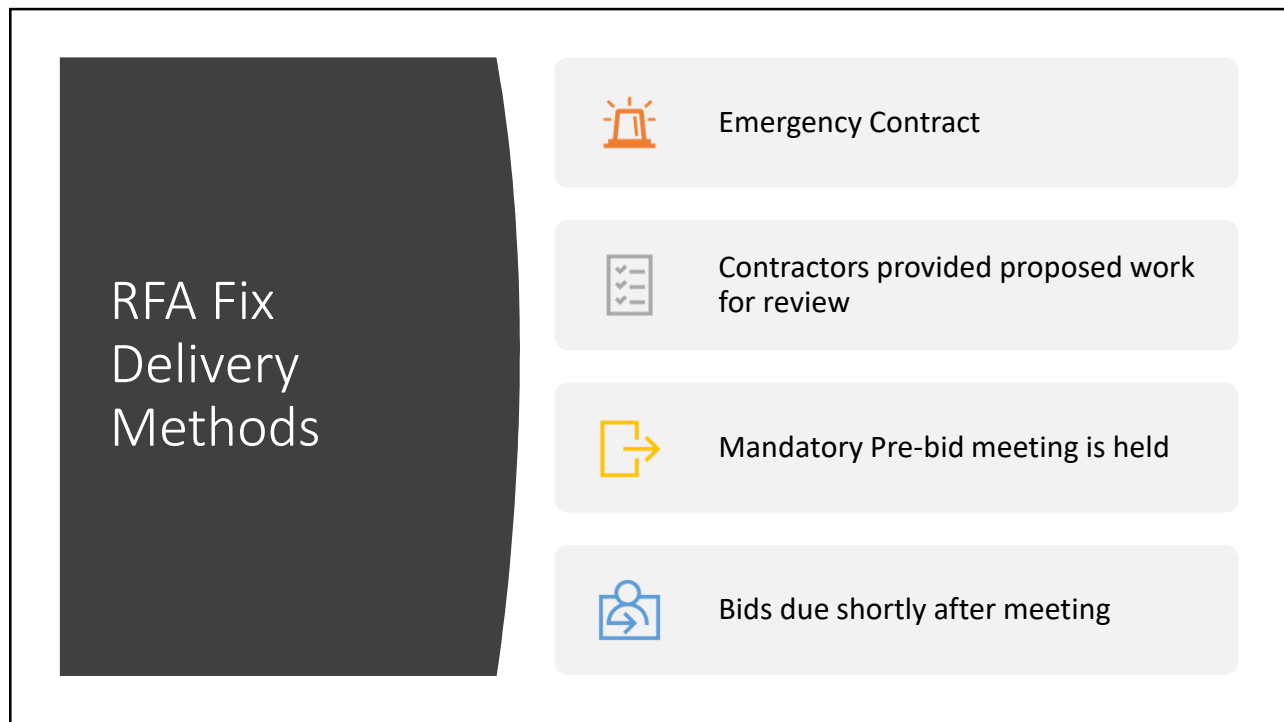
22



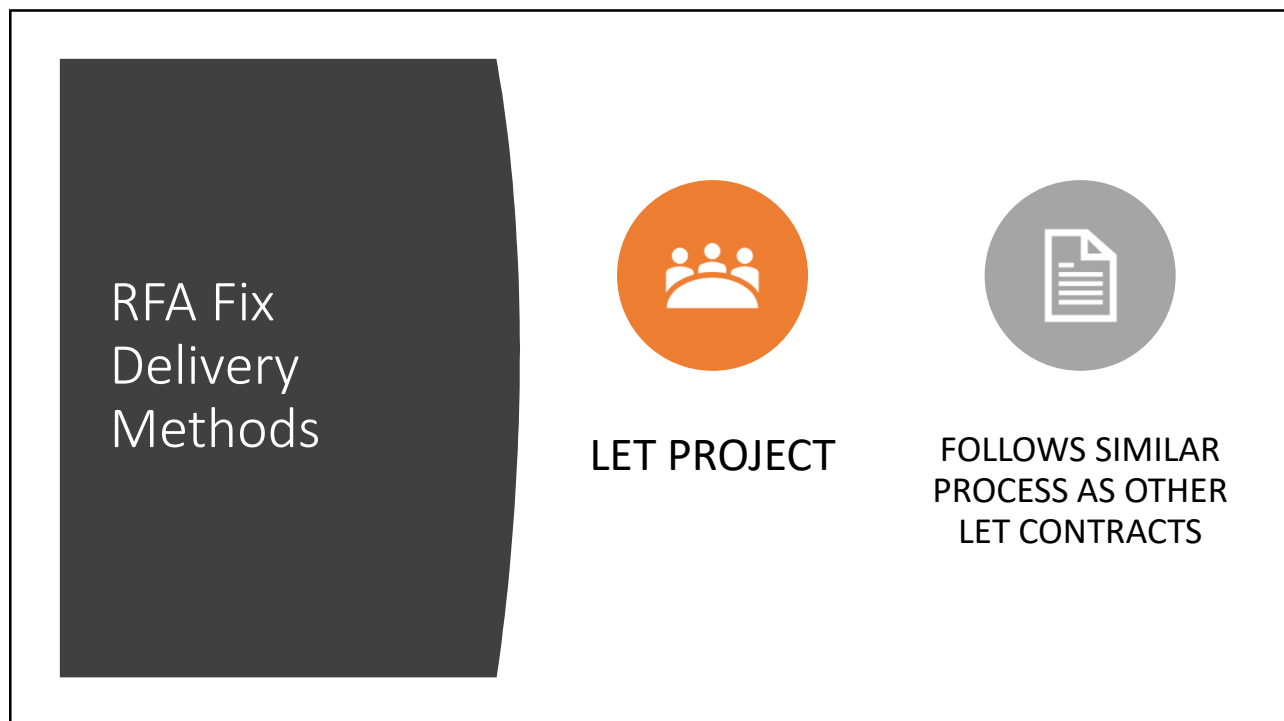
23



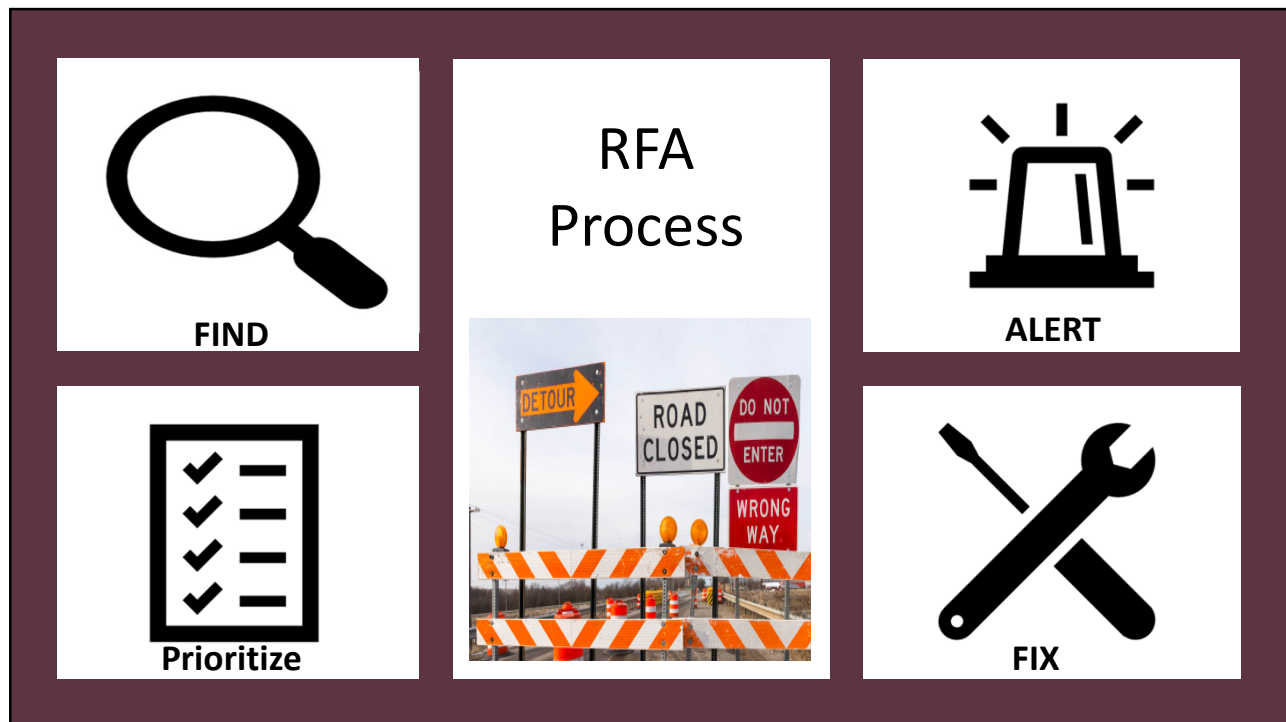
24



25



26



27

## Other RFA Notes

---

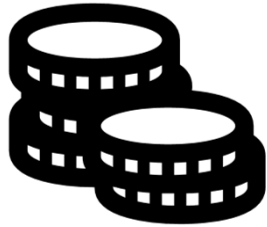
- Traffic Impact is secondary concern
- Focus is on making the FIX

28

Other RFA  
Notes

---

\$8 Million a year



---

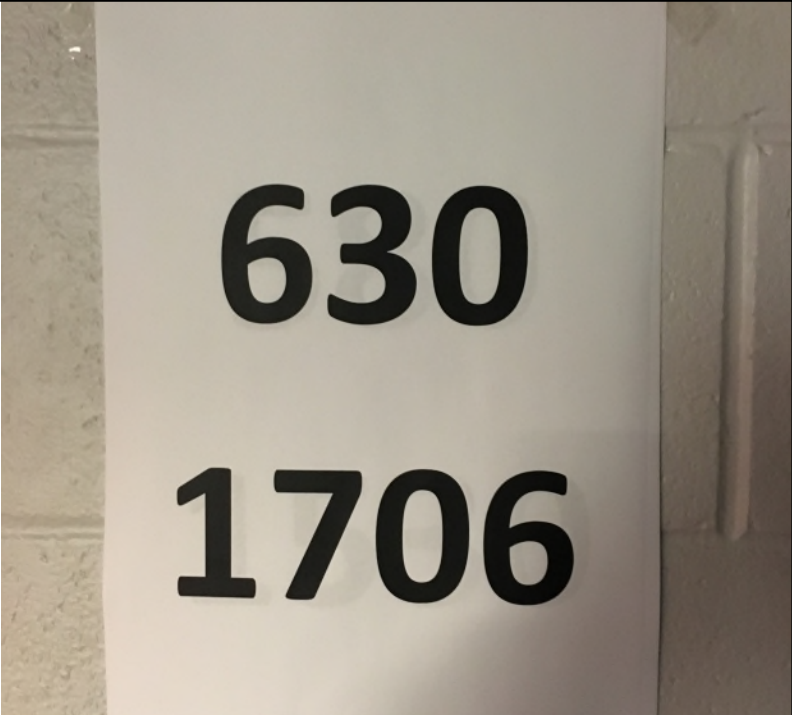
---



29

RFA Bridge  
Design Unit

- Jason DeRuyver
- Ben Davenport
- Jacob Creisher
- Luke Bailey
- Michelle Billingsworth
- Andrew Zevchak



630

1706

30

## IN SUMMARY

- RFA Projects are limited in scope of work to address the specific RFA issue(s)
- A process is setup to address critical findings found during bridge site visits and inspections
- Traffic Impacts are secondary to the FIX