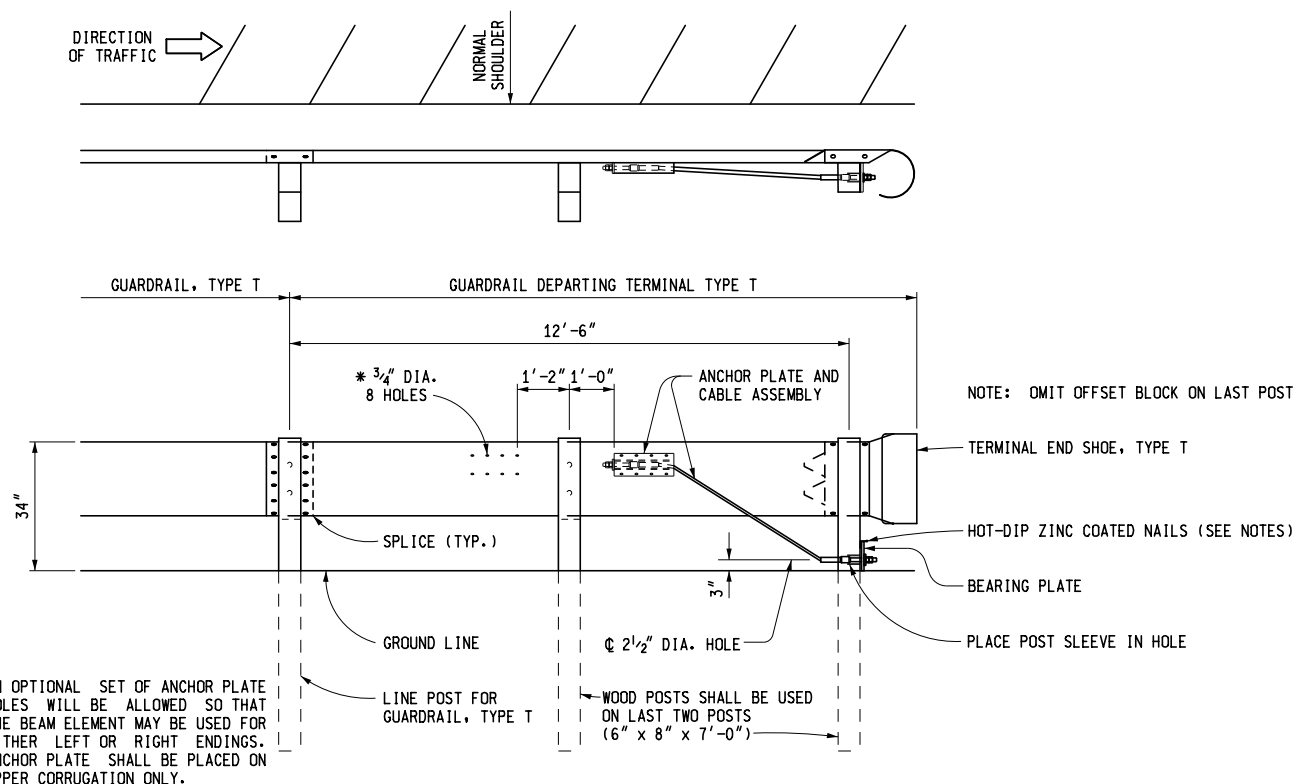


GUARDRAIL DEPARTING TERMINAL TYPE B



GUARDRAIL DEPARTING TERMINAL TYPE T



PREPARED
BY
DESIGN DIVISION

DRAWN BY: B.L.T.

CHECKED BY: W.K.P.

DEPARTMENT DIRECTOR
Kirk T. Steudle

APPROVED BY: _____
DIRECTOR, BUREAU OF FIELD SERVICES

APPROVED BY: _____
DIRECTOR, BUREAU OF DEVELOPMENT

MICHIGAN DEPARTMENT OF TRANSPORTATION
BUREAU OF DEVELOPMENT STANDARD PLAN FOR

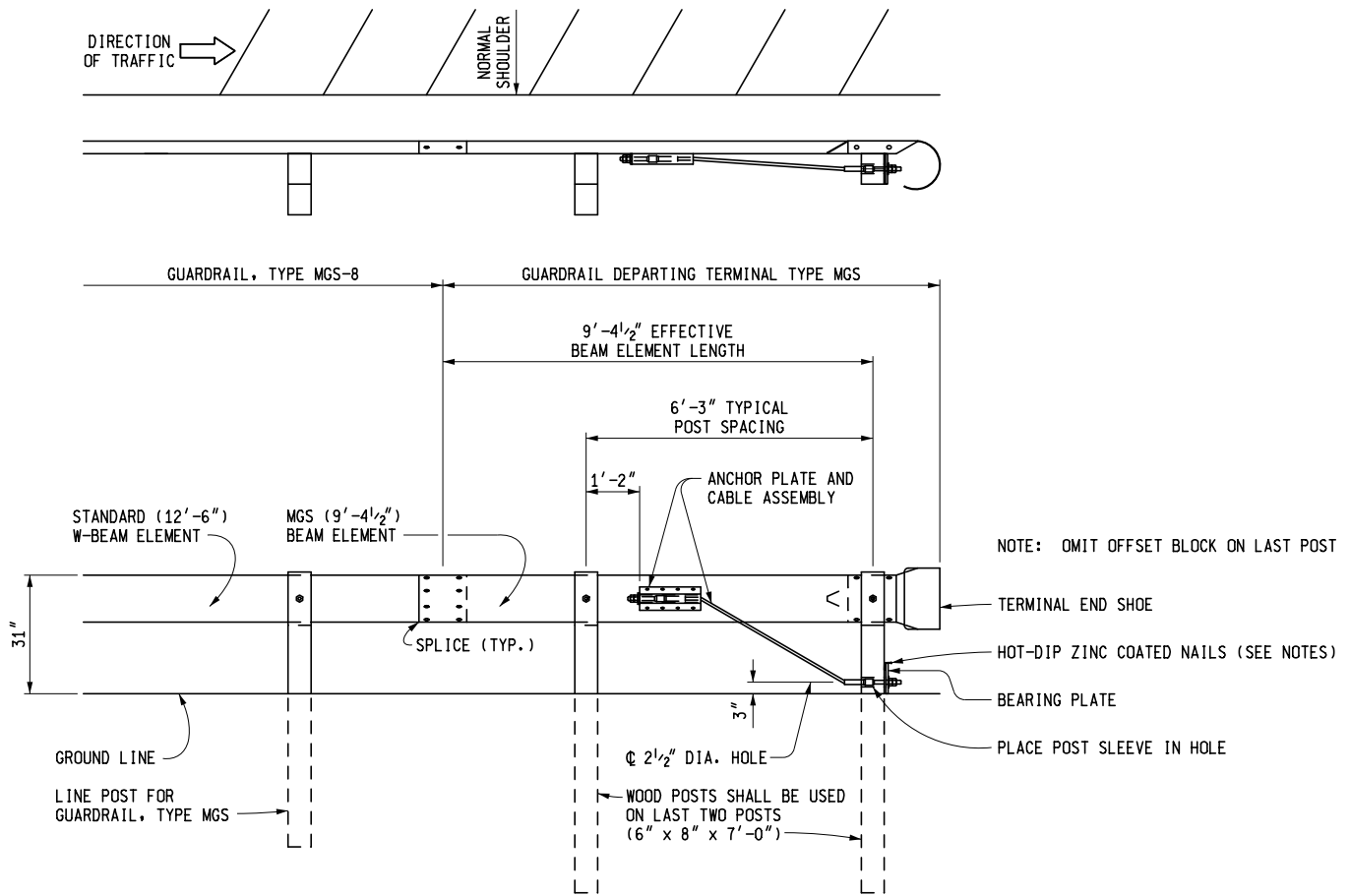
GUARDRAIL DEPARTING TERMINAL TYPES B, T, & MGS

F.H.W.A. APPROVAL

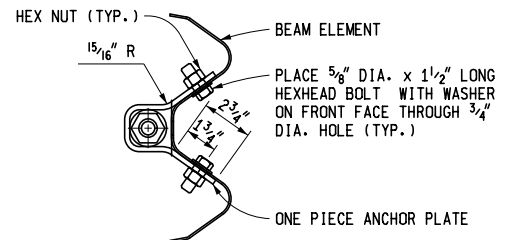
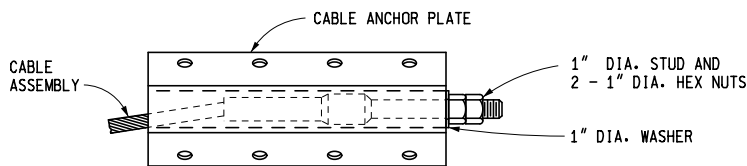
9-28-2018
PLAN DATE

R-66-E

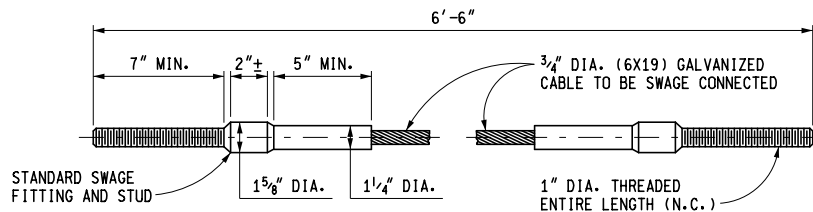
SHEET
1 OF 4



GUARDRAIL DEPARTING TERMINAL TYPE MGS



CABLE ANCHOR PLATE DETAILS



CABLE ASSEMBLY

MICHIGAN DEPARTMENT OF TRANSPORTATION
BUREAU OF DEVELOPMENT STANDARD PLAN FOR

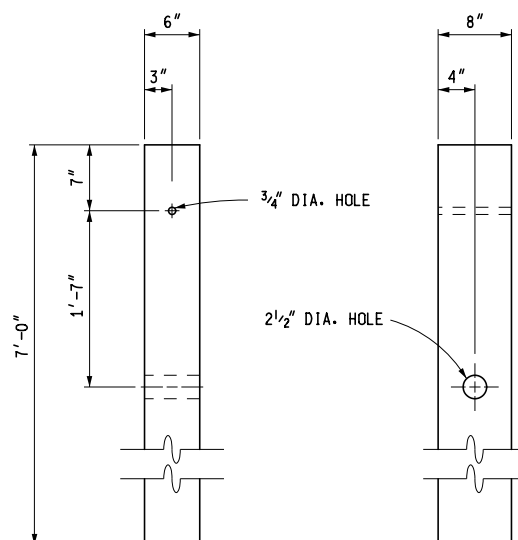
GUARDRAIL DEPARTING TERMINAL TYPES B, T, & MGS

F.H.W.A. APPROVAL

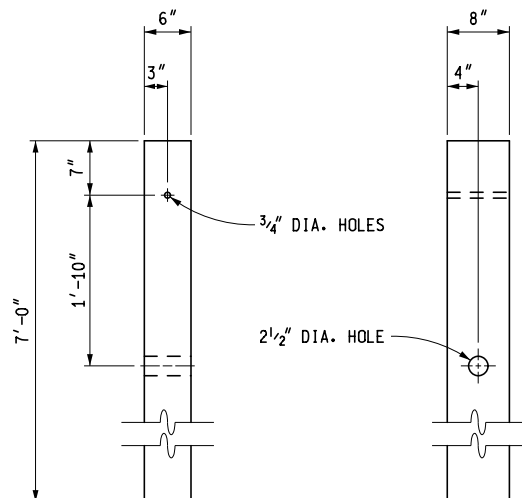
9-28-2018
PLAN DATE

R-66-E

SHEET
2 OF 4



WOOD POST DETAIL
(FOR LAST POST, GUARDRAIL DEPARTING TERMINAL TYPE B)



WOOD POST DETAIL
(FOR LAST POST, GUARDRAIL DEPARTING TERMINAL TYPE MGS)

MICHIGAN DEPARTMENT OF TRANSPORTATION
BUREAU OF DEVELOPMENT STANDARD PLAN FOR

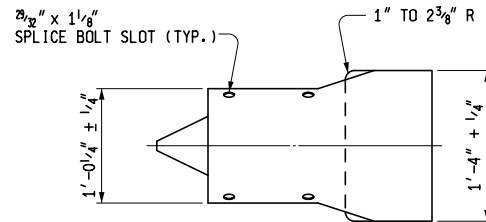
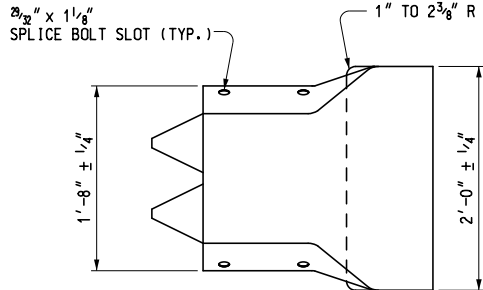
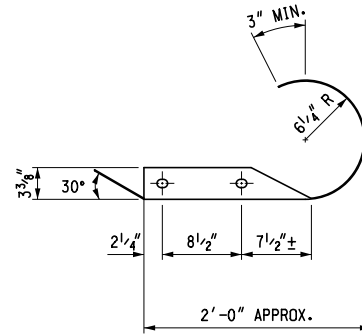
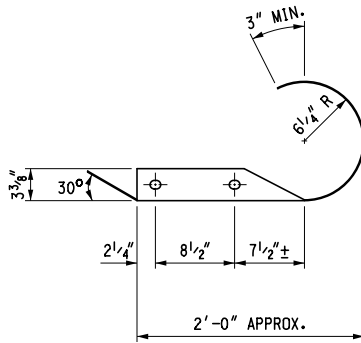
GUARDRAIL DEPARTING TERMINAL TYPES B, T, & MGS

F.H.W.A. APPROVAL

9-28-2018
PLAN DATE

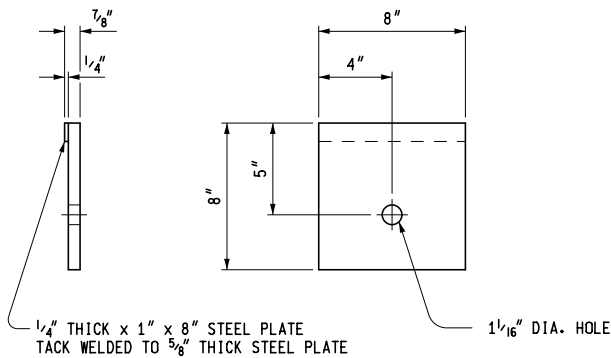
R-66-E

SHEET
3 OF 4



TERMINAL END SHOE,
TYPE B OR TYPE MGS

TERMINAL END SHOE, TYPE T



BEARING PLATE



POST SLEEVE

NOTES:

ALL POSTS, OFFSET BLOCKS, BEAM ELEMENTS, AND HARDWARE (INCLUDING BOLTS, NUTS, AND WASHERS) SHALL CONFORM TO THE CURRENT STANDARD SPECIFICATIONS AND TO THE CURRENT STANDARD PLAN R-60-SERIES, WHERE APPLICABLE, EXCEPT AS SPECIFIED ON THIS STANDARD.

ALL 1:10 SLOPES SHALL BE GRADED TO CLASS A SLOPE TOLERANCES.

FOR DETAILS OF GUARDRAIL PLACEMENT, SEE STANDARD PLAN R-59-SERIES.

AFTER THE CABLE ASSEMBLY HAS BEEN TIGHTENED, A SECOND NUT SHALL BE INSTALLED ON EACH END OF THE CABLE SO THAT THE CABLE WILL NOT LOOSEN.

TWO HOT-DIP ZINC COATED NAILS SHALL BE DRIVEN INTO THE WOOD POST AT THE TOP OF THE BEARING PLATE TO KEEP THE BEARING PLATE FROM ROTATING.

MICHIGAN DEPARTMENT OF TRANSPORTATION
BUREAU OF DEVELOPMENT STANDARD PLAN FOR

GUARDRAIL DEPARTING
TERMINAL TYPES B, T, & MGS

F.H.W.A. APPROVAL

9-28-2018
PLAN DATE

R-66-E

SHEET
4 OF 4