

FLUSH MOUNT BRIDGE RAILING

NOTES:

ALL WORK AND MATERIAL SHALL BE IN ACCORDANCE WITH THE STANDARD SPECIFICATIONS.

DETAILS SHOWN ARE IN ACCORDANCE WITH CURRENT AASHTO SPECIFICATIONS.

BRIDGE RAILING USED WITH SIDEWALK SHALL BE USED ONLY WITH THE SIDEWALK CONFIGURATION (PROFILE) SHOWN ON THIS STANDARD PLAN.

NO SLIP FORMING OF "BRIDGE RAILING, AESTHETIC PARAPET TUBE" SHALL BE ALLOWED. RAILING SHALL BE CAST IN PLACE.

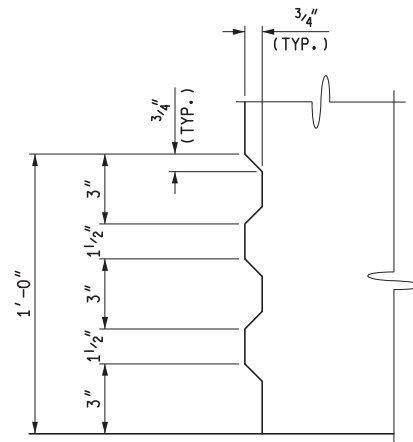
THE LIGHT STANDARD ANCHOR BOLT ASSEMBLY IS INCLUDED IN THE BID ITEM "BRIDGE RAILING, AESTHETIC PARAPET TUBE". SEE STANDARD PLAN B-103-SERIES.

FOR LIGHT STANDARD ANCHOR BOLT ASSEMBLY DETAILS, IF BRIDGE RAILING, AESTHETIC PARAPET TUBE IS PLACED FLUSH ON THE BRIDGE DECK (WITHOUT SIDEWALK), THE LIGHTING CONDUIT SHALL NOT BE PLACED IN THE RAILING.

A RUBBED FINISH ON THE VERTICAL AND TOP CONCRETE SURFACES OF THE PARAPET RAILING IS REQUIRED.

AESTHETIC TREATMENT AS DETAILED ON THIS SHEET SHALL BE ADDED TO THE FASCIA SIDE OF RAILING IF NO AESTHETIC TREATMENT IS DETAILED ON THE PLAN SHEETS AND SHALL BE INCLUDED IN THE BID ITEM "BRIDGE RAILING, AESTHETIC PARAPET TUBE". AESTHETIC TREATMENT DETAILED ON THE PLAN SHEETS MAY BE UP TO 1" IN CONCRETE DEPTH WITHOUT MODIFICATION TO THE RAILING WIDTH AND SHALL BE INCLUDED IN THE BID ITEM "BRIDGE RAILING, AESTHETIC PARAPET TUBE". AESTHETIC TREATMENT REQUIRING ADDITIONAL RAILING WIDTH OR THE USE OF ELASTOMERIC FORM LINERS SHALL BE PAID FOR SEPARATELY.

* THE HSS 2" x 2" x 1/8" RAIL, SLOTTED HOLE, AND 5/8" BOLT ARE NOT REQUIRED WHEN RAILING IS USED IN COMBINATION WITH PEDESTRIAN FENCING (SEE STANDARD PLAN B-41-SERIES).



AESTHETIC TREATMENT DETAIL



PREPARED
BY
DESIGN DIVISION

DRAWN BY: B.L.T.

CHECKED BY: V.Z.

DEPARTMENT DIRECTOR

Kirk T. Steudle

Kimberly
Avery

APPROVED BY: DIRECTOR, BUREAU OF FIELD SERVICES

Bradley C.
Wieferich

APPROVED BY: DIRECTOR, BUREAU OF DEVELOPMENT

Digitally signed by Kimberly Avery
DN: cn=Kimberly Avery, o=MDOT,
ou=Bureau of Field Services,
email=averyk@mdot.michigan.gov, c=US
Date: 2016.12.15 08:57:18 -05'00'

Digitally signed by Bradley C. Wieferich
DN: cn=Bradley C. Wieferich, o=Michigan
Department of Transportation, ou=Design
Division, email=wieferichb@mdot.michigan.gov,
c=US
Date: 2016.12.10 09:46:17 -05'00'

MICHIGAN DEPARTMENT OF TRANSPORTATION
BUREAU OF DEVELOPMENT STANDARD PLAN FOR

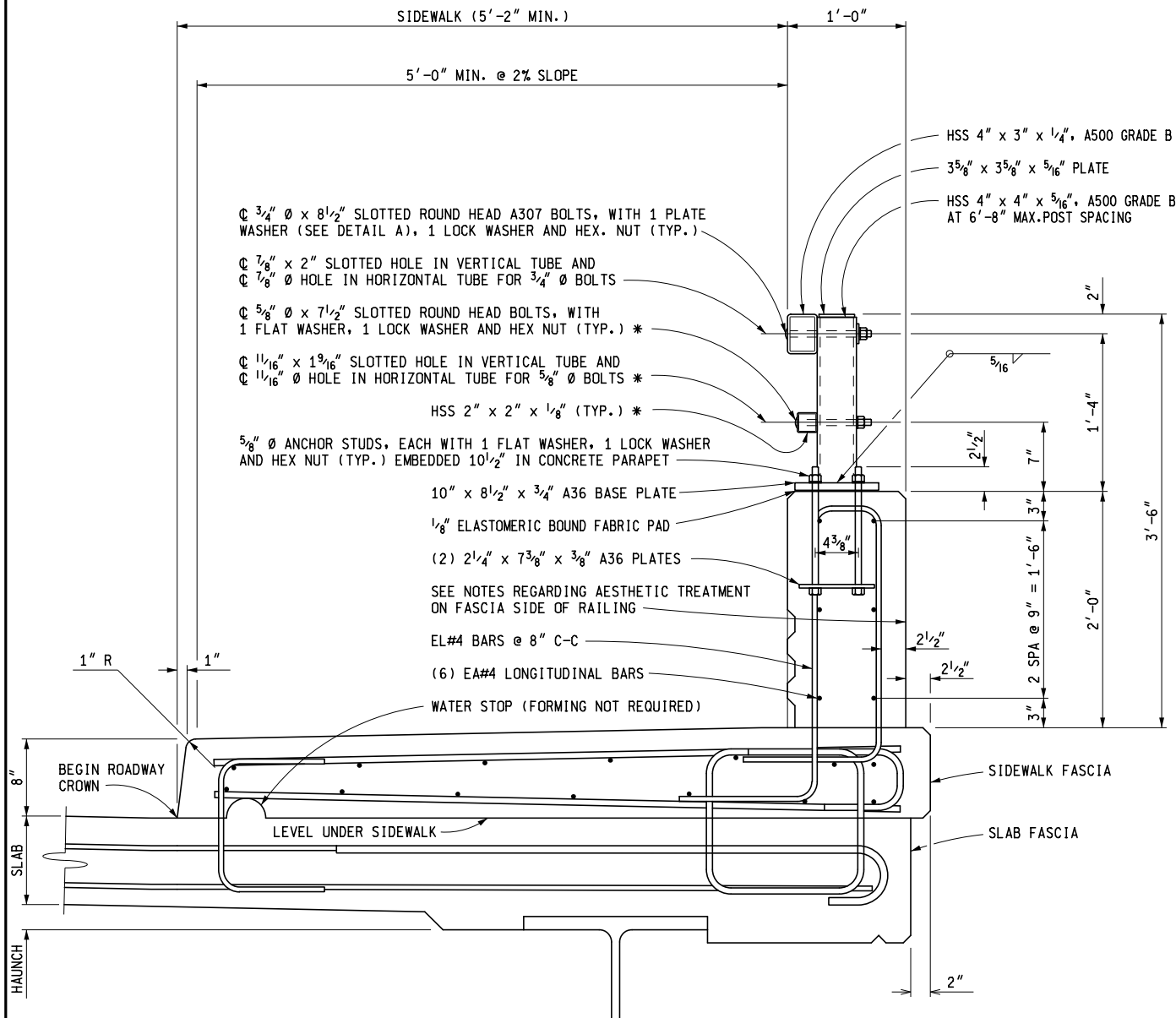
BRIDGE RAILING, AESTHETIC PARAPET TUBE

7-25-2017
F.H.W.A. APPROVAL

11-2-2016
PLAN DATE

B-25-K

SHEET
1 OF 8



BRIDGE RAILING WITH SIDEWALK

MICHIGAN DEPARTMENT OF TRANSPORTATION
BUREAU OF DEVELOPMENT STANDARD PLAN FOR

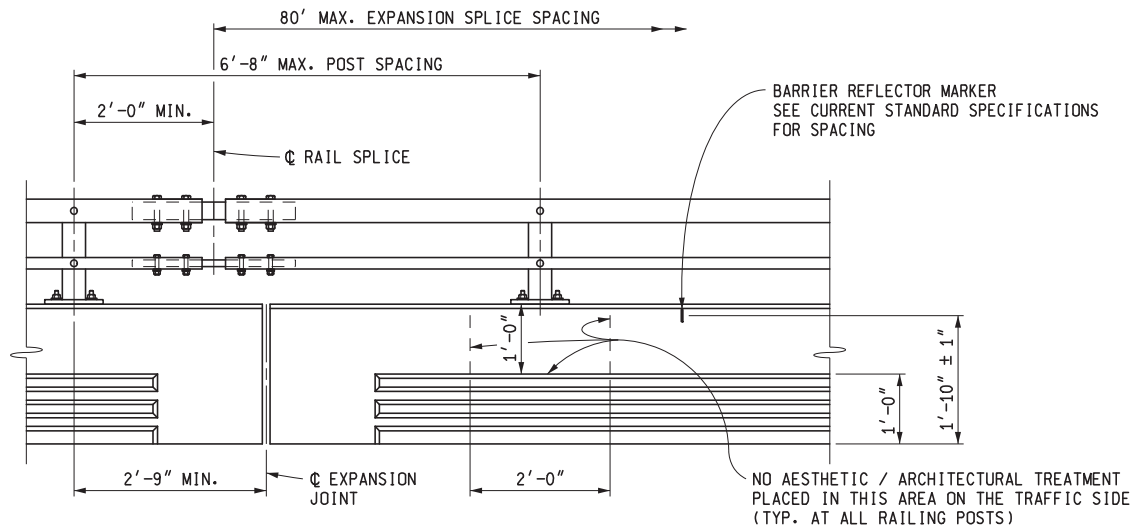
BRIDGE RAILING,
AESTHETIC PARAPET TUBE

7-25-2017
F.H.W.A. APPROVAL

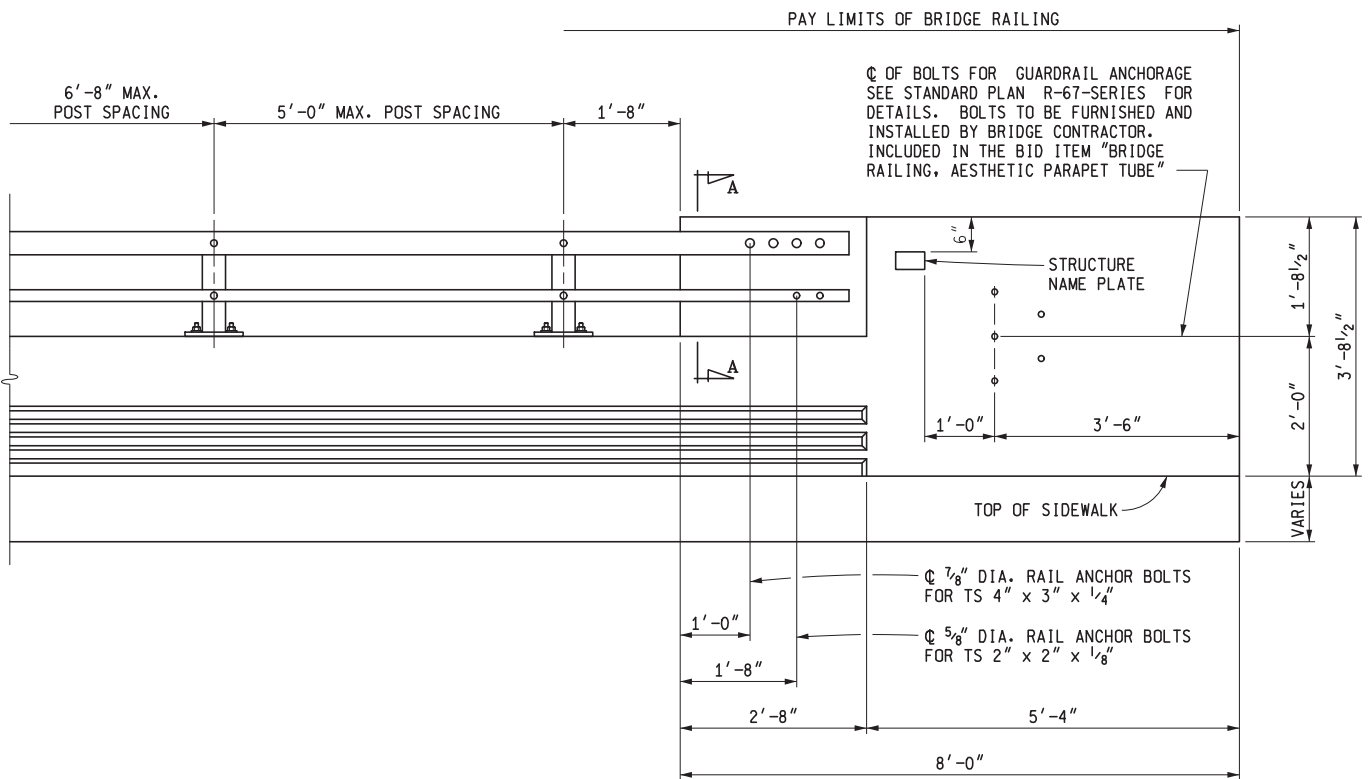
11-2-2016
PLAN DATE

B-25-K

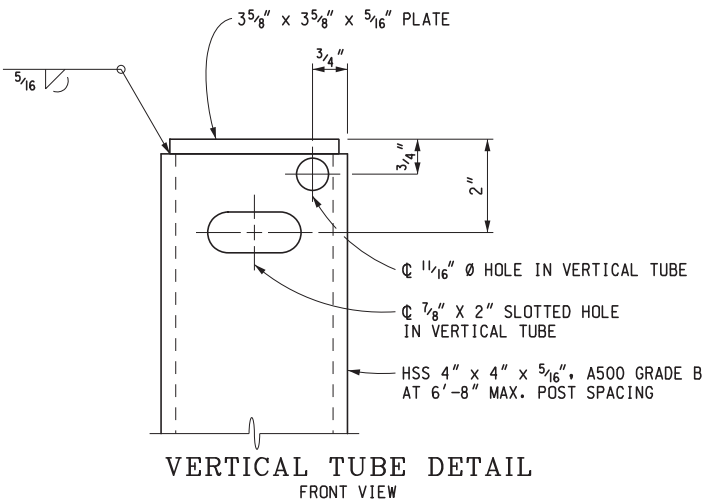
SHEET
2 OF 8



RAILING ELEVATION



END WALL ELEVATION



MICHIGAN DEPARTMENT OF TRANSPORTATION
BUREAU OF DEVELOPMENT STANDARD PLAN FOR

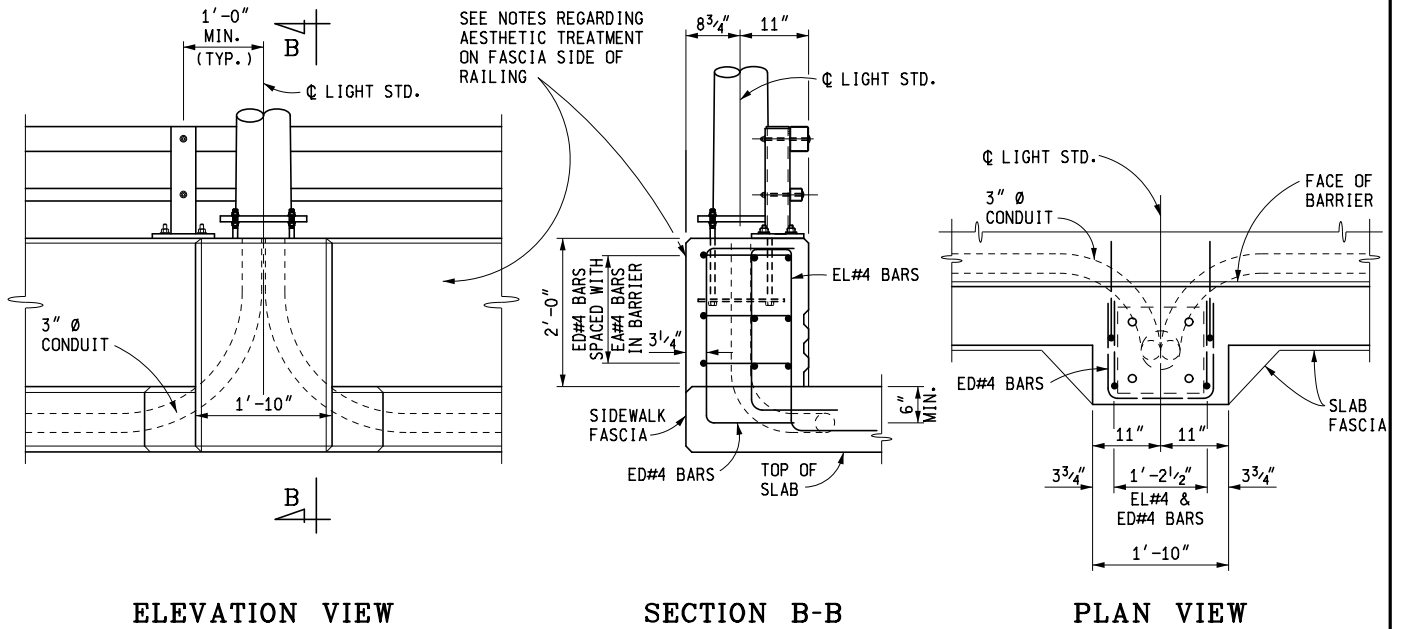
BRIDGE RAILING, AESTHETIC PARAPET TUBE

7-25-2017
F.H.W.A. APPROVAL

11-2-2016
PLAN DATE

B-25-K

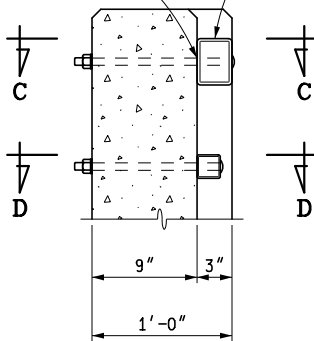
SHEET
3 OF 8



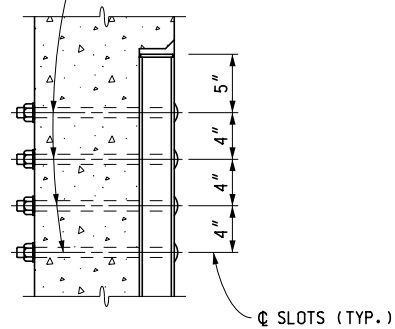
LIGHT STANDARD DETAILS

THREADS SHALL BE EXCLUDED FROM SHEAR PLANE (TYP.)

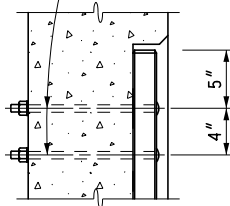
HSS 4" x 3" x 1/4", A500 GRADE B



CL 15/16" x 1 1/8" SLOTTED HOLE IN RAIL, CL 7/8" Ø x 1'-2" SLOTTED ROUND HEAD BOLTS WITH HEX. NUT, 1 FLAT WASHER, 1 LOCK WASHER (TYP.)



CL 11/16" x 7/8" SLOTTED HOLE IN RAIL, CL 5/8" Ø x 1'-1" SLOTTED ROUND HEAD BOLTS WITH HEX. NUT, 1 FLAT WASHER, 1 LOCK WASHER (TYP.)



MICHIGAN DEPARTMENT OF TRANSPORTATION
BUREAU OF DEVELOPMENT STANDARD PLAN FOR

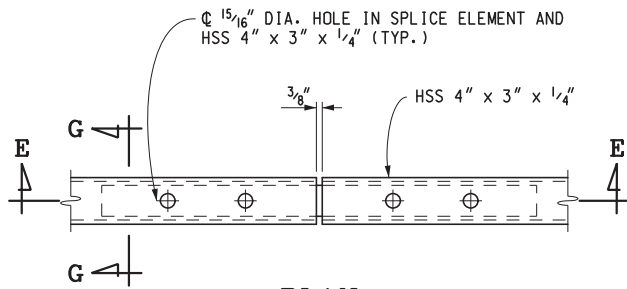
BRIDGE RAILING, AESTHETIC PARAPET TUBE

7-25-2017
F.H.W.A. APPROVAL

11-2-2016
PLAN DATE

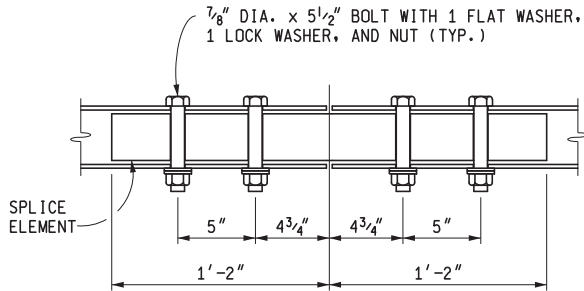
B-25-K

SHEET
4 OF 8



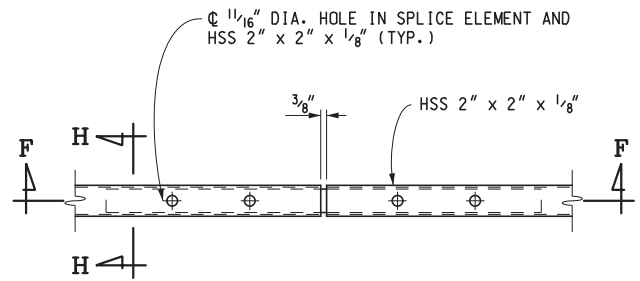
PLAN

HSS 4" x 3" x 1/4"



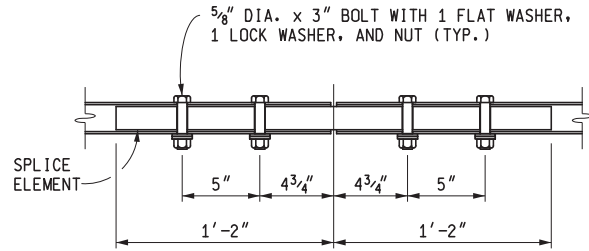
SECTION E-E

HSS 4" x 3" x 1/4"



PLAN

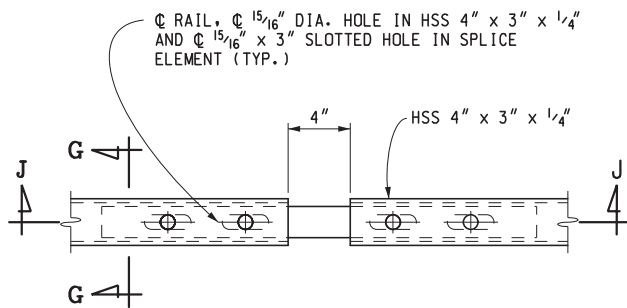
HSS 2" x 2" x 1/8"



SECTION F-F

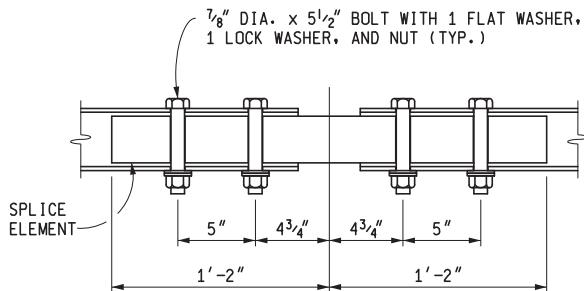
HSS 2" x 2" x 1/8"

FIXED SPLICE DETAILS



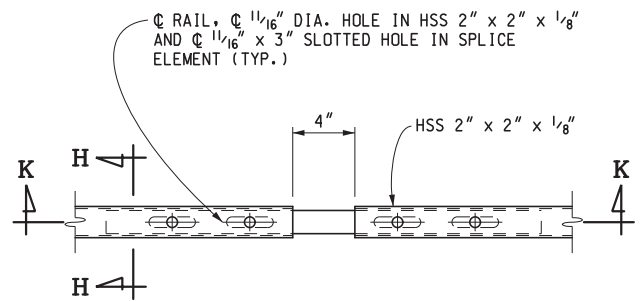
PLAN

HSS 4" x 3" x 1/4"



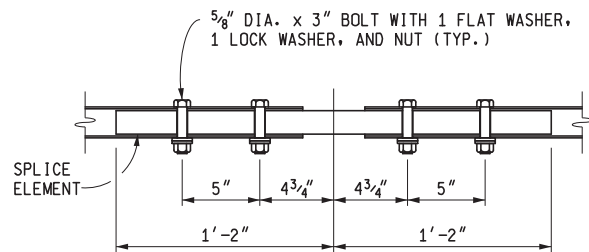
SECTION J-J

HSS 4" x 3" x 1/4"



PLAN

HSS 2" x 2" x 1/8"



SECTION K-K

HSS 2" x 2" x 1/8"

EXPANSION SPLICE DETAILS

MICHIGAN DEPARTMENT OF TRANSPORTATION
BUREAU OF DEVELOPMENT STANDARD PLAN FOR

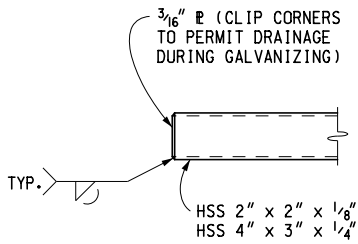
BRIDGE RAILING, AESTHETIC PARAPET TUBE

7-25-2017
F.H.W.A. APPROVAL

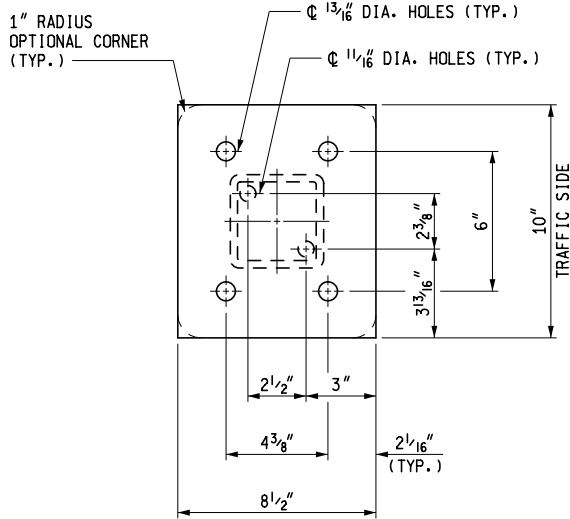
11-2-2016
PLAN DATE

B-25-K

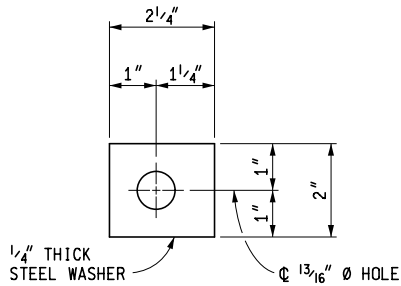
SHEET
5 OF 8



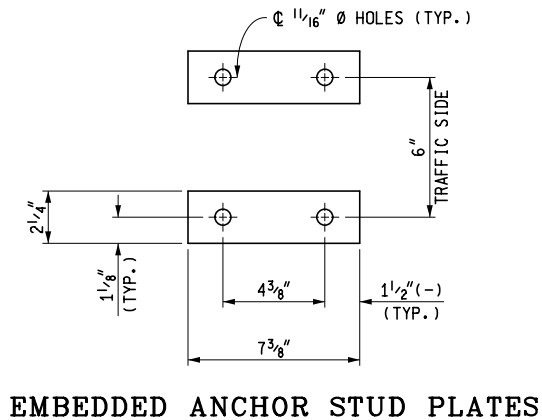
END OF RAIL



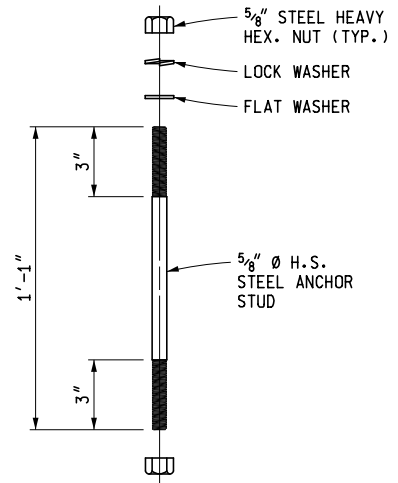
EXTERIOR BASE PLATE



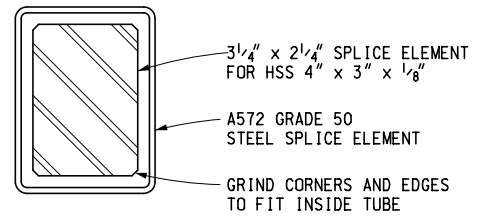
DETAIL A



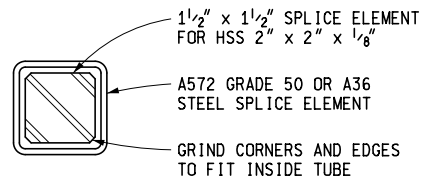
EMBEDDED ANCHOR STUD PLATES



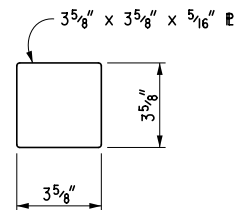
ANCHOR STUD DETAIL



SECTION G-G



SECTION H-H



POST COVER PLATE

MICHIGAN DEPARTMENT OF TRANSPORTATION
BUREAU OF DEVELOPMENT STANDARD PLAN FOR

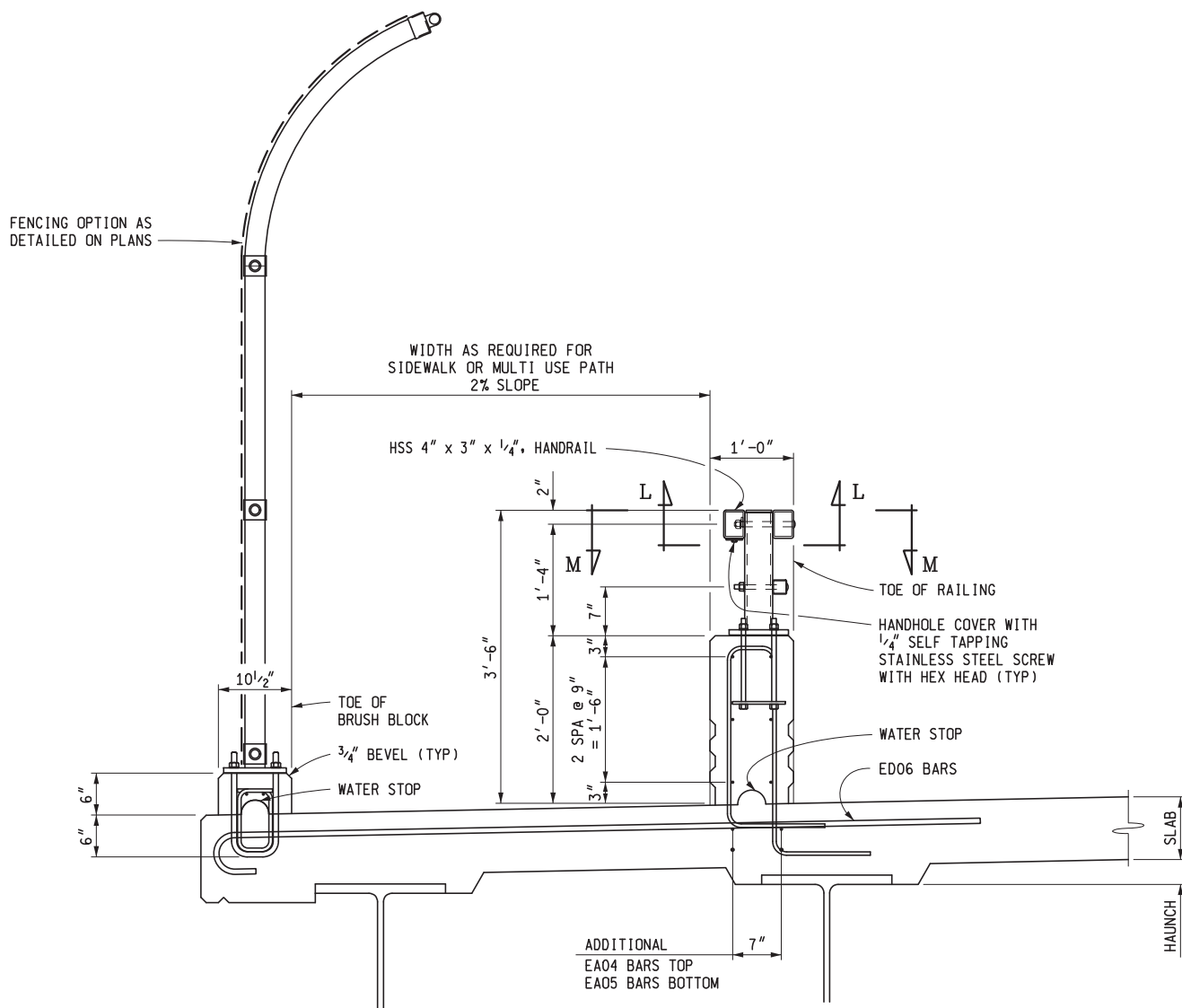
BRIDGE RAILING, AESTHETIC PARAPET TUBE

7-25-2017
F.H.W.A. APPROVAL

11-2-2016
PLAN DATE

B-25-K

SHEET
6 OF 8



SECTION WITH PEDESTRIAN / MULTI USE PATH

MICHIGAN DEPARTMENT OF TRANSPORTATION
BUREAU OF DEVELOPMENT STANDARD PLAN FOR

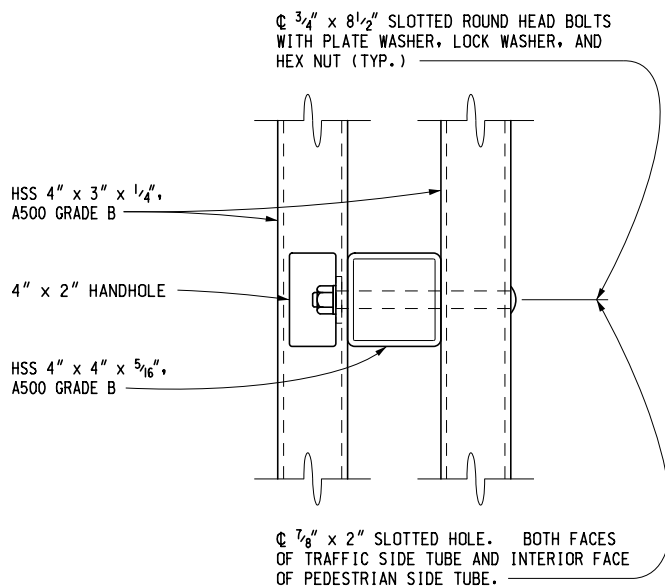
BRIDGE RAILING, AESTHETIC PARAPET TUBE

7-25-2017
F.H.W.A. APPROVAL

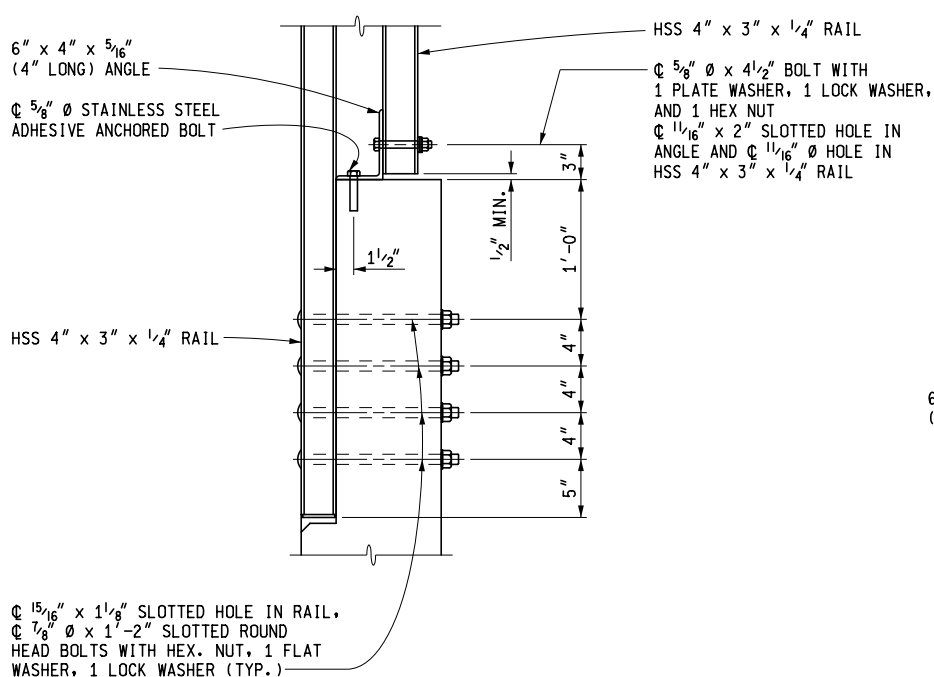
11-2-2016
PLAN DATE

B-25-K

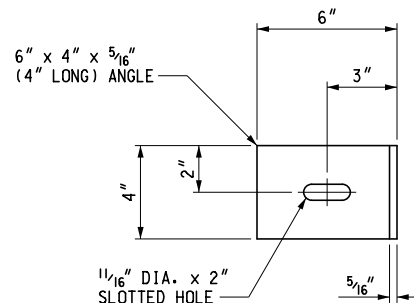
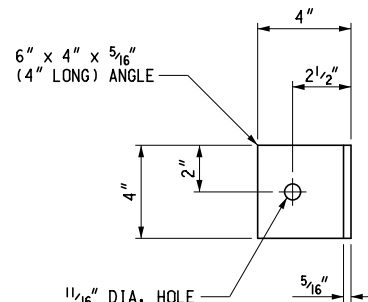
SHEET
7 OF 8



SECTION L-L



SECTION M-M



MICHIGAN DEPARTMENT OF TRANSPORTATION
BUREAU OF DEVELOPMENT STANDARD PLAN FOR

BRIDGE RAILING, AESTHETIC PARAPET TUBE

7-25-2017
F.H.W.A. APPROVAL

11-2-2016
PLAN DATE

B-25-K

SHEET
8 OF 8