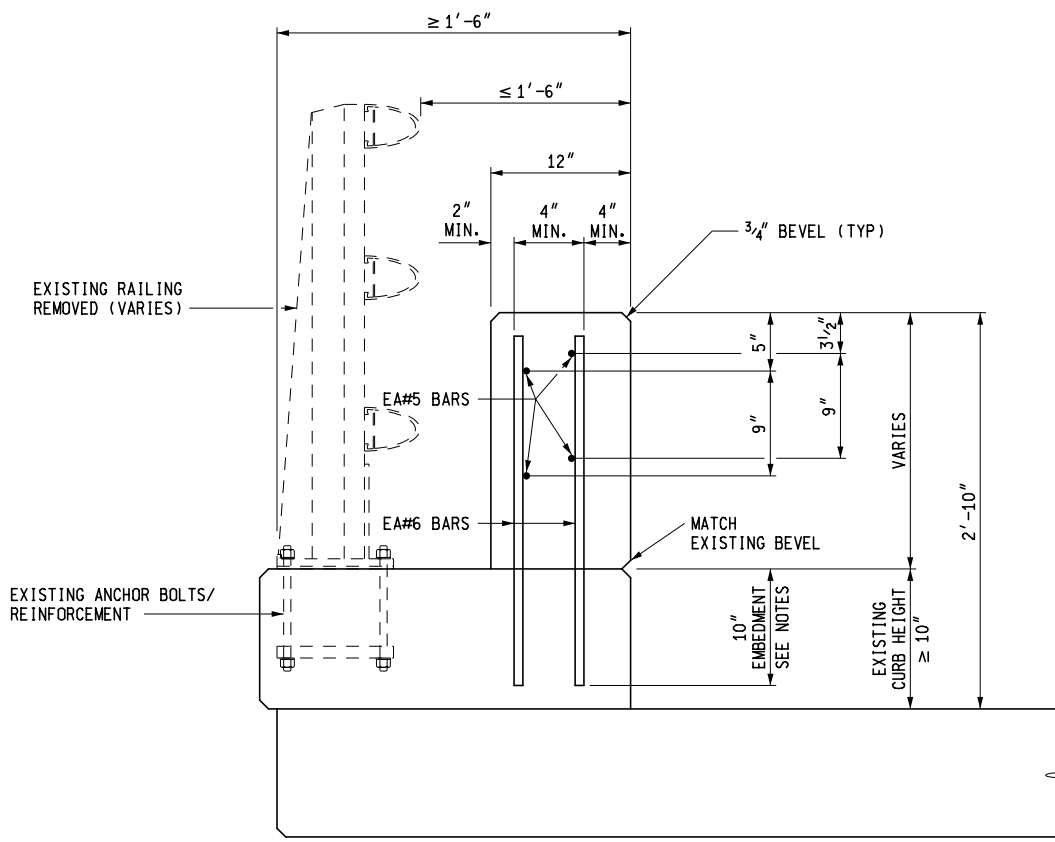


BRIDGE BARRIER RAILING ELEVATION



SECTION A-A



PREPARED
BY
DESIGN DIVISION

DRAWN BY: B.L.T.

CHECKED BY: V.Z.

DEPARTMENT DIRECTOR
Paul C. Ajegba

APPROVED BY: _____
DIRECTOR, BUREAU OF BRIDGES AND STRUCTURES

APPROVED BY: _____
DIRECTOR, BUREAU OF FIELD SERVICES

APPROVED BY: _____
DIRECTOR, BUREAU OF DEVELOPMENT

MICHIGAN DEPARTMENT OF TRANSPORTATION
BUREAU OF DEVELOPMENT STANDARD PLAN FOR

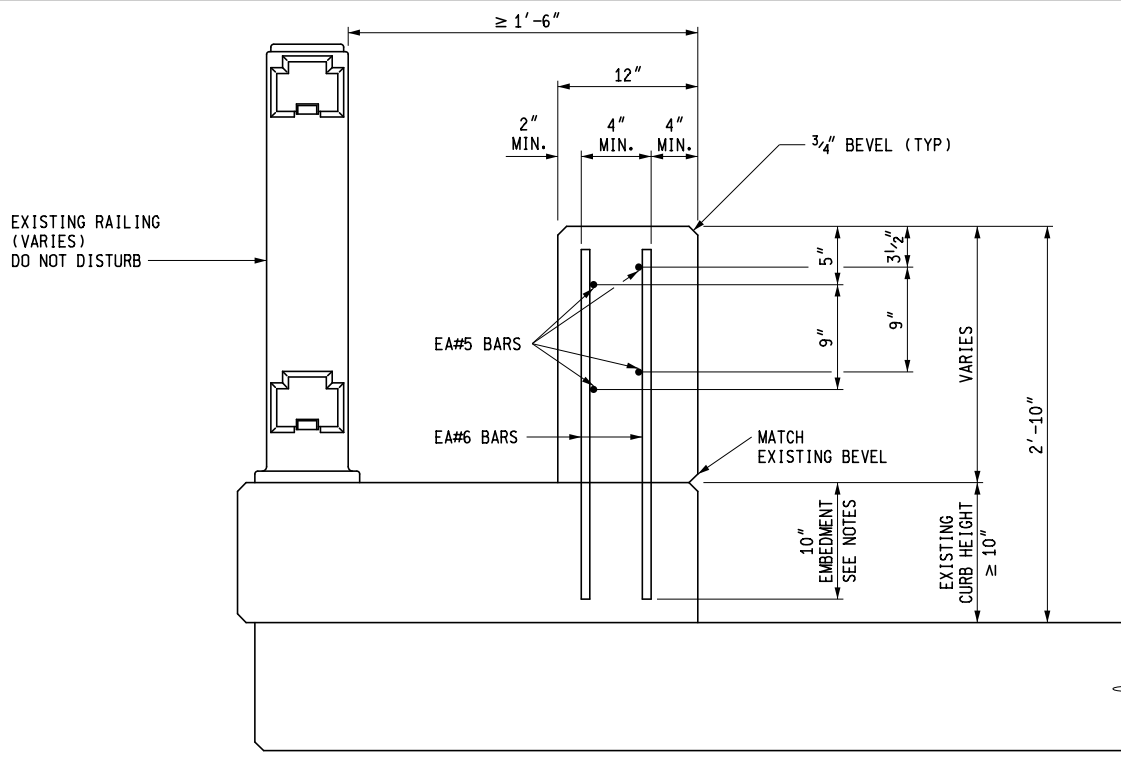
BRIDGE RAILING, CONCRETE BLOCK RETROFIT (CURB HEIGHT $\geq 10"$)

F.H.W.A. APPROVAL

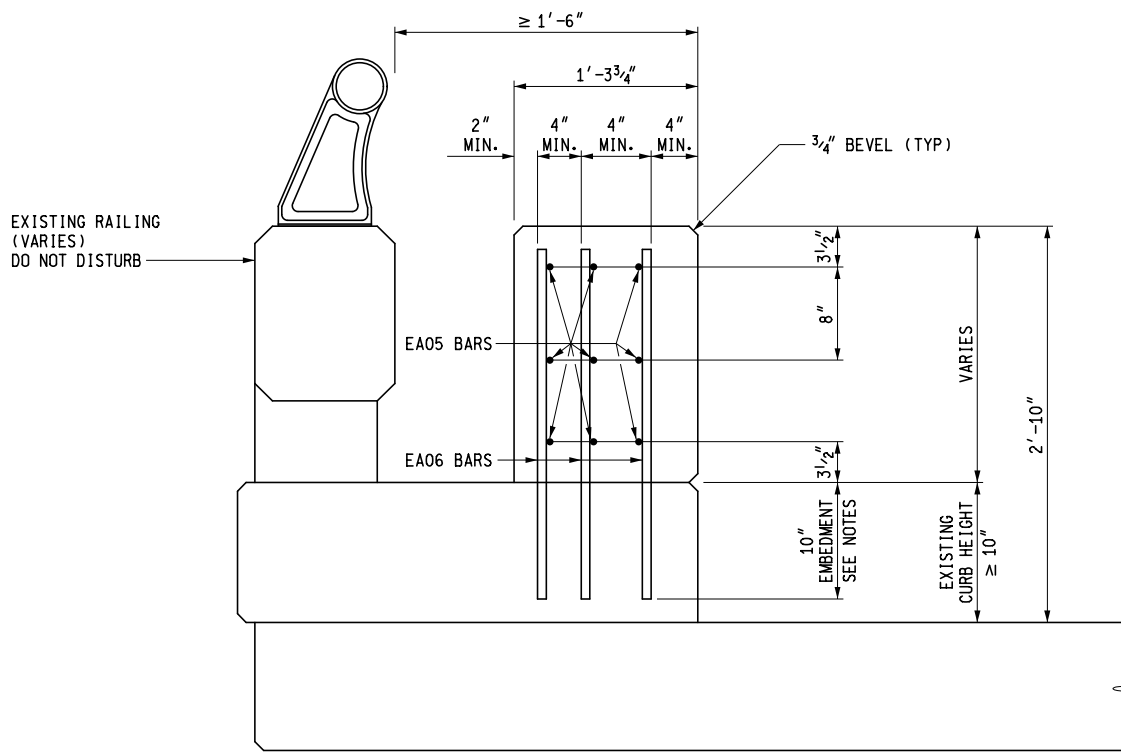
10-15-2019
PLAN DATE

B-50-A

SHEET
1 OF 3



SECTION B-B



SECTION C-C

MICHIGAN DEPARTMENT OF TRANSPORTATION
BUREAU OF DEVELOPMENT STANDARD PLAN FOR

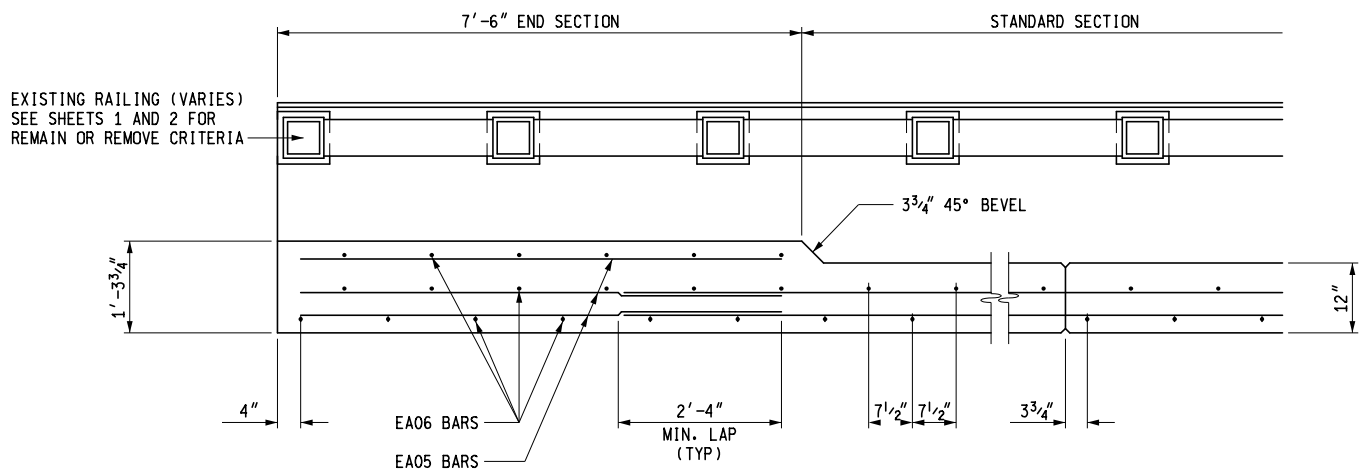
**BRIDGE RAILING,
CONCRETE BLOCK RETROFIT**
(CURB HEIGHT ≥ 10")

F.H.W.A. APPROVAL

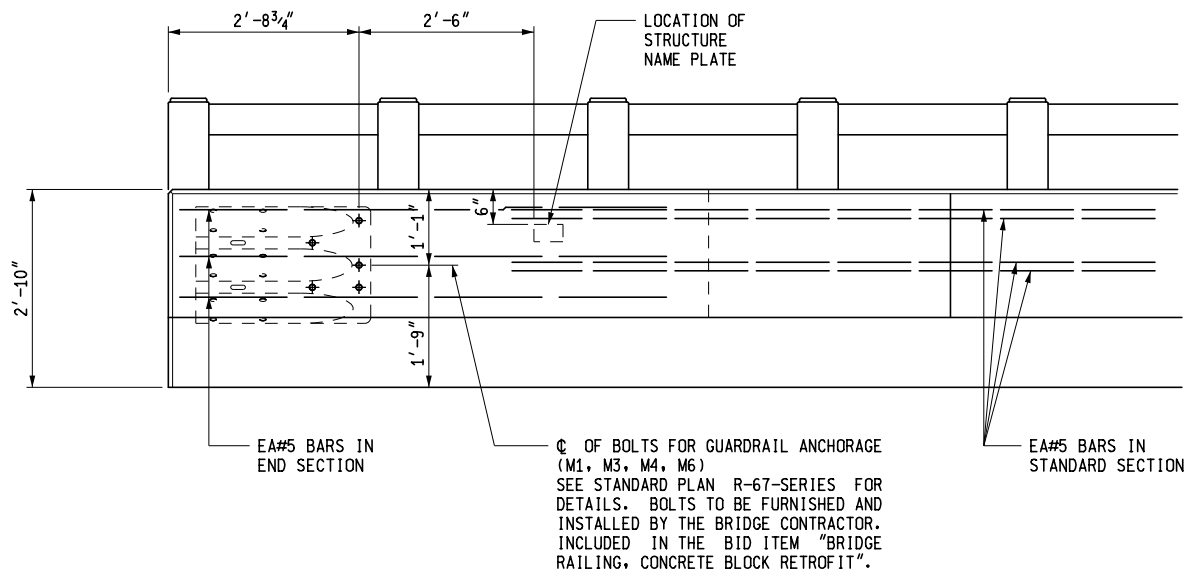
10-15-2019
PLAN DATE

B-50-A

SHEET
2 OF 3



PLAN VIEW



ELEVATION VIEW

SHOWING HORIZONTAL REINFORCEMENT

NOTES:

CONCRETE BLOCK RETROFIT IS INTENDED FOR PLACEMENT ON TOP OF CURBS/ SIDEWALKS ≥ 10 " THICK.

DETAILS SHOWN ARE IN ACCORDANCE WITH CURRENT AASHTO SPECIFICATIONS.

ALL WORK AND MATERIAL SHALL BE IN ACCORDANCE WITH THE STANDARD SPECIFICATIONS.

MICHIGAN DEPARTMENT OF TRANSPORTATION
BUREAU OF DEVELOPMENT STANDARD PLAN FOR

**BRIDGE RAILING,
CONCRETE BLOCK RETROFIT
(CURB HEIGHT ≥ 10 ")**

F.H.W.A. APPROVAL

10-15-2019
PLAN DATE

B-50-A

SHEET
3 OF 3