

WETLANDS, STREAMS/LAKES/DRAINS AND FLOODPLAINS

KURT DENSMORE



1

IMPORTANCE OF WETLANDS/STREAMS/LAKES/FLOODPLAINS

- Flood prevention
- Filter water impurities
- Improve water quality
- Fish and wildlife habitat
- Maintain biodiversity
- Recreational opportunities
- Commercial opportunities



2

WHY REQUIRED ?

Federal Regulations

- Clean Water Act
- Rivers and Harbors Act
- Executive Orders

State of Michigan Regulations

- Natural Resources Environmental Protection Act
 - Floodplain Protection
 - Inland Lakes and Streams Protection
 - Wetlands Protection

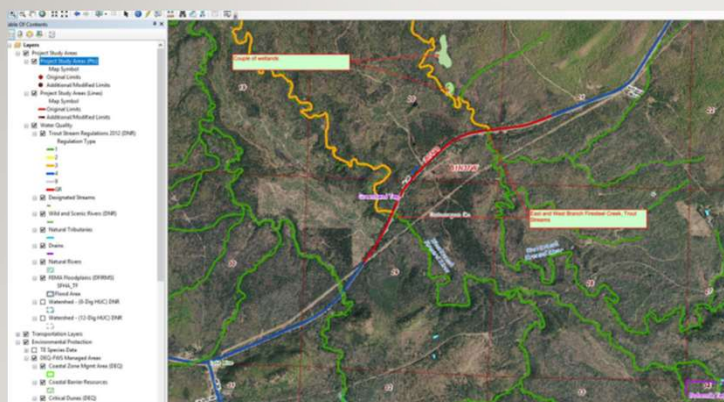
Importance to MDOT

- Schedule
- Cost
- Design



3

DESK TOP ENVIRONMENTAL REVIEW TOOLS AND RESOURCES



- Project Manager Question Sheet
- MDOT ArcGIS Map
 - National Wetland Inventory Maps
 - Topographic Maps
 - FEMA Floodplain Maps
 - DNR Trout Stream Maps
 - Aerial photos

4

REGULATORY AGENCY COORDINATION THAT MAY TAKE PLACE

Region Permit Specialist completes the MDNR/USACE Joint Permit Application

- Federal Highway Administration
- US Army Corps of Engineers
- US Coast Guard
- Environmental Protection Agency
- Michigan Department of Environment, Great Lakes and Energy (EGLE).
- Michigan Department of Natural Resources



5

QUESTIONS THAT I MAY ASK THE PROJECT MANAGER/PERMIT COORDINATOR.....

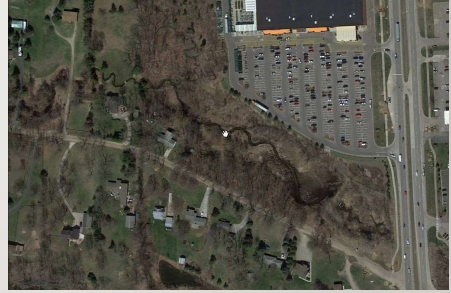
- Where are the fish biting and the ducks rafting up?
- Working outside the toe of slope?
- Work below the ordinary high water mark?
- MDEQ/USACE permit required?
- Impacts to the resource?



6

MITIGATION MEASURES UTILIZED....

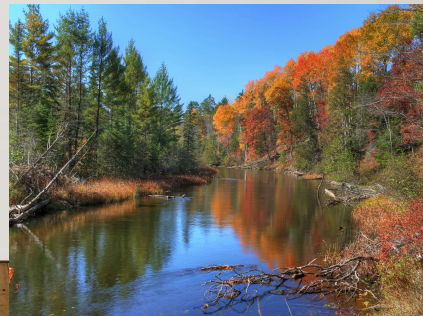
- Avoidance
- Minimization
- Mitigation of Impacts
 - Wetland Mitigation
 - Stream Mitigation
 - Floodplain Impacts



7

Challenges to Signing Off on NEPA Document

- Not enough design to determine impacts to the resources.
- Programmed with a very short timeline to conduct NEPA.



8

AGRICULTURE



9

IMPORTANCE OF AGRICULTURAL LANDS



- Importance to humans
 - Basis for food security.
 - Michigan's economy
- Importance to MDOT
 - Cost
 - Design
 - Schedule
- Agricultural Laws
 - Federal Regulation (USDA/NRCS)
 - Federal Farmland Protection Policy Act
 - State Regulation (MDARD)
 - Farmland and Open Space Preservation Act

10

REGULATORY AGENCY COORDINATION/MITIGATION

- Natural Resource Conservation Service Area Offices
 - Avoidance
 - Minimization
 - Submittal of a Farmland Conversion Impact Rating form
- Michigan Department of Agriculture and Rural Development
 - Avoidance
 - Minimization
 - PAI 16 Relinquishment Process



11

DESKTOP ENVIRONMENTAL REVIEW TOOLS AND RESOURCES



- Project Manager Question Sheet
- MDOT ArcGIS Map
- Zoning Maps
- MDARD's PAI 16 database
- MDARD's PAI 16 Farmland Preservation GIS Map
- NRCS Web Soil Survey (Prime Farmland)

12

QUESTIONS THAT I MAY ASK THE PROJECT MANAGER.....

- Fee, grade permit, easement or Consent to grade right-of-way?
 - Over 1 acre total?
 - Where in the project limits?
- Do you anticipate FEE ROW at PAI 16 parcels?



13

EXAMPLE OF FPPA COMPLIANCE:

M-13/M-19 Yale to Avoca, St. Clair County, AD-1006 submittal for FPPA Compliance

- Farmland Conversion Impact Rating form (AD-1006) submitted to the USDA/NRCS field office in St. Clair County
- 5 month turnaround
- Typical turn around is less than 30 days



14

EXAMPLE OF PA I 16 IMPACT COMPLIANCE

*M-50 Clear vision corner right-of-way PA116 impact,
Tuscola County*

- Submittal of letter to MDARD to ask for relinquishment of a small PA I 16 parcel
- 3 month for a response
- Costs associated with process at MDARD outweigh the payoff.
- MDARD gave the authority to proceed without relinquishment



15

COASTAL ZONE



16

WHAT IS THE COASTAL ZONE PROGRAM & WHY IS IT IMPORTANT?

- World's longest freshwater coastline
- Management of coastline cultural resources
- Supports healthy and sustainable coastal communities
- Protection of T&E species habitat



17

LEGAL PROTECTION OF COASTAL RESOURCES

Federal Regulations

- Coastal Zone Management Act
- Barrier Resources Act

State Regulations

- Natural Resources Environmental Protection Act
 - Shorelands Protection and Management
 - Sand Dune Protection and Management
 - Sand Dune Mining



18

A FEDERAL/STATE PARTNERSHIP

- Coastal Zone Management Program (CZMP)
- Federal activity (MDOT) consistent with State of Michigan & Federal coastal resource laws



19

REGULATORY AGENCY COORDINATION

- Great Lakes Shorelands Unit of EGLE
- U.S. Army Corps of Engineers
- U.S. Coast Guard



20

WHERE ARE COASTAL RESOURCES LOCATED IN MICHIGAN?

- About 1000 feet inland from the OHWM
- Farther inland for:
 - Coastal wetlands
 - Drowned river mouth lakes
 - Bays and interdunal wetlands
 - Natural areas



21

DESKTOP ENVIRONMENTAL REVIEW

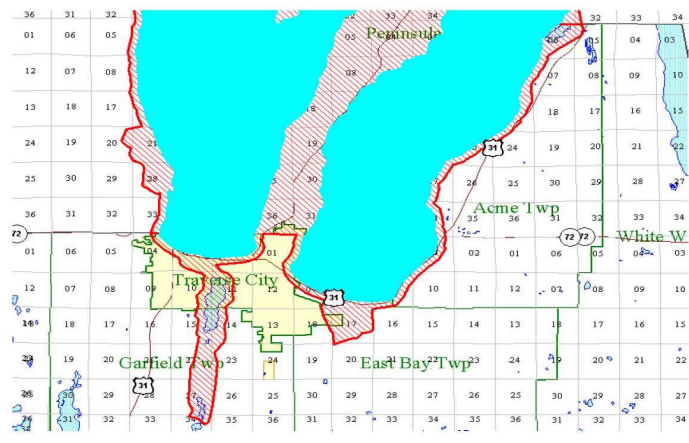
TOOLS AND RESOURCES

MDOT ArcGIS Map Layers

- PM answers to Questions
- Coastal Zone Management Area Boundary
- Coastal Barrier Resources
- Critical Dunes
- High Risk Erosion Areas

Grand Traverse County
 Acme Township, T28N R9W, T28N R10W, and T27N R10W
 East Bay Township, T27N R10W
 Garfield Township, T27N R10W and T27N R11W
 Traverse City, T27N R10W and T27N R11W

The heavy red line is the **Coastal Zone Management Boundary**
 The red hatched area is the **Coastal Zone Management Area**



22

QUESTIONS I MAY ASK THE PROJECT MANAGER....

- Will there be any widening?
- Will an EGLE/USACE permit be required?



23

WHAT IS THE APPROVAL PROCESS ?

- MDOT submits a CZ review packet to the Great Lakes Shorelands Unit
- EGLE has up to 90 days to review and respond
- EGLE will then issue a formal CZ “Consistency Determination” letter
- The NEPA document is signed off for Coastal Zone impacts
- EGLE permit issuance



24

PROJECT EXAMPLE

US-2 Dune Maintenance and Management Plan

- 4 miles of US-2 has been ditched
 - Control water, ice and ponding
 - Create reservoir for drifting sands
 - Removal allowed without additional clearance



25

MITIGATION EXAMPLES



- Dune restoration
- Dune stabilization
- Revegetation Dune Grass
- Boardwalks & Viewing Platform
- Stair access to beach

26

QUESTIONS?



Kurt Densmore
MDOT
Environmental Services Section
517.241.0071
densmorek@michigan.gov