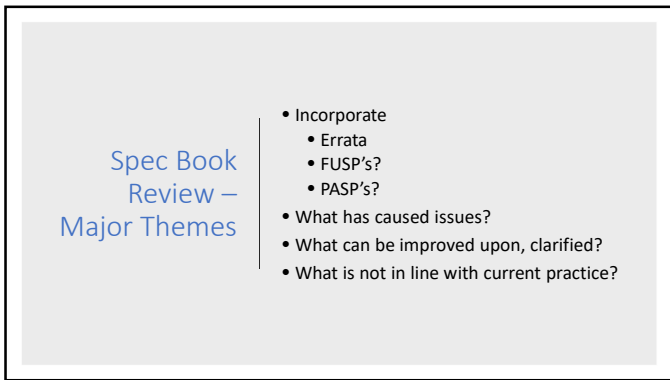
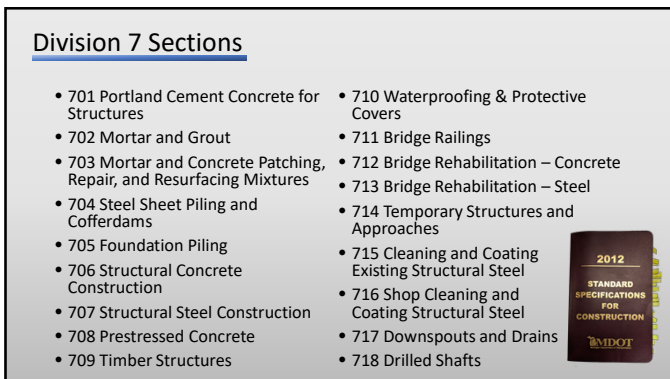


1



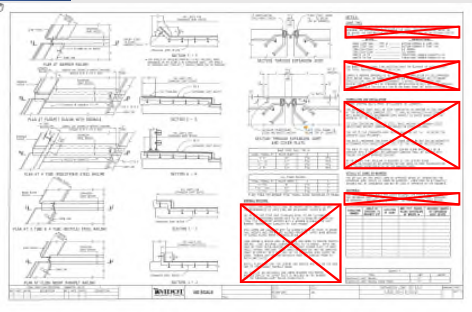
2



3

Use of Notes

- Stand
- AVOI
- CAU



7

✓ Notable Changes

8

Notable Changes – 704 Sheet Pile/Cofferdams

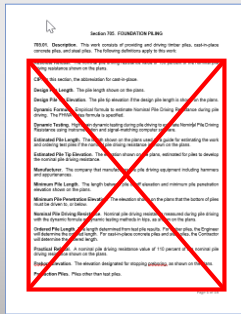
- Permanent Sheet Pile Installations – Division 9 material requirements
- Cofferdams
 - 6' and greater - PE required
 - Tremie – must design to tremie water height
- Field Welding – AWS D1.1



9

Notable Changes – 705 Foundation Piling

- Definitions
- Test Pile/Ordering
- Redrive/Restrike



10

Notable Changes – 706 Structural Concrete

- Conc Spec'd by Strength (e.g. 3500)
- High Performance conc (e.g. 3500HP)
- Expansion Joints – most notes incorporated
- Falsework/forms – no welding to bridge!
- SIP Forms – must have Styrofoam
- No interruption of deck wet cure – period
- Other concrete –3 days and 70%
- Night pours – end 1 hour before sunrise
- Pour sequence changes require 7-day notice



11

Notable Changes – 707 & 708



12

Notable Changes – 707 – Structural Steel

- Expanded applicability beyond bridge elements
- Consistency with 708
- Incorporated errata, FUSP, NSBA
- Re-ordered to follow typical fab process
- Fracture critical requirements incorporated

13

Notable Changes – 708 – Prestressed

- Expanded applicability beyond bridge elements
- Consistency with 707
- Incorporated errata, FUSP, PCI
- Tighter tolerance on strand tensioning
- Revised specimen curing and testing

14

Notable Changes – 711 Bridge Railings

- Barrier replacement incorporated
- Anchor bolts for lights – install only
- Reworked pay items - consistent

15

Notable Changes – 712 Bridge Rehab - Concrete

- Deck demo equipment size limited for steel beams
- If contractor damages – PE for fix
- Overlay changes
 - No heavy equipment on hydro'd deck
 - Scarify 1" from steel (must locate)
 - Must expose top reinf over 75% of test area
 - No interruption of wet cure
 - Pour at night

16

Notable Changes – 713 Bridge Rehab - Steel

- PE for pin plate damage
- Heat straightening spec incorporated (mostly)
- Temp support includes lateral bracing
- Prohibited pin & hanger damage when measuring



17

Notable Changes – 713 Bridge Rehab - Steel

- Minor change to incorporate FUSP
- Major overhaul forthcoming

18

Notable Changes – 715/716 Clean & Coat Steel

- Field – need 1' overlap of enclosure between stages
- Stenciling – inside of fascia
- 716 Shop Painting – deleted repeated info

19

Notable Changes – 718 Drilled Shafts

- We will now pay for reinforcement!

20

Construction Manual

- False Decking
- Welding Requirements
- Field Measurements Reporting
- Hydrodemolition Calibration and Equipment
- Cofferdam Elevations and Dewatering Requirements
- And Many, Many, Many More



21

Special Provisions



22

Division 7
Final
Notes

- Retained FUSP's being updated
- Construction Wiki Update – Fall 2020
- PASP's must be re-approved
- Minimize Non-standard notes
- Conc Curing = Additional Time

23
