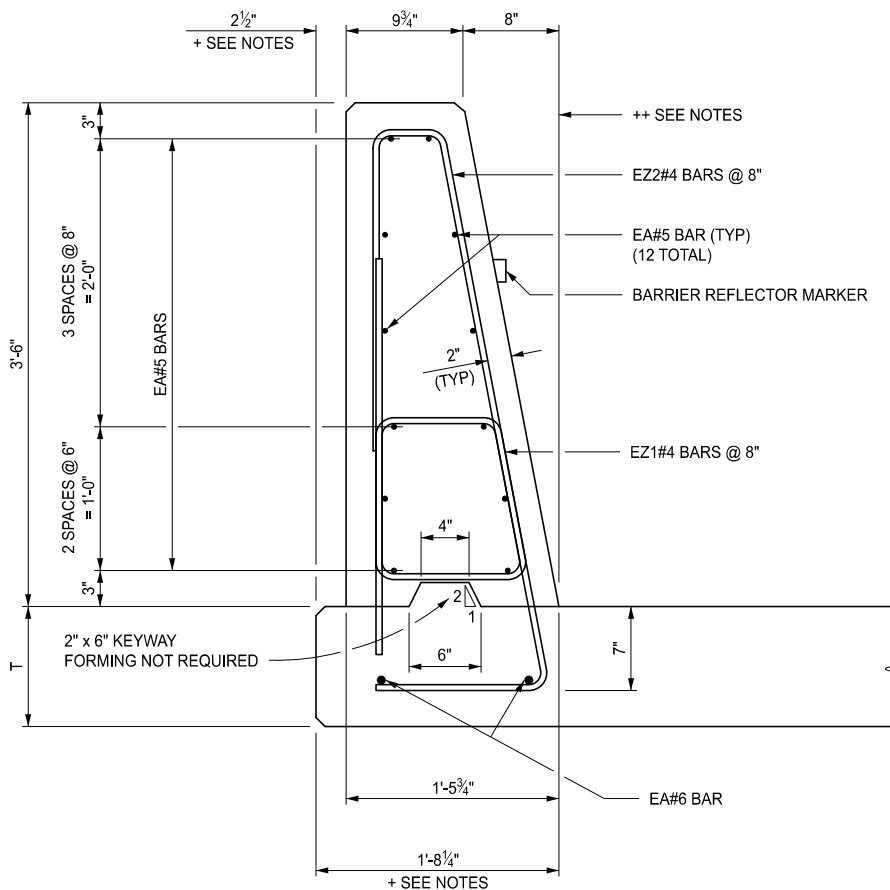


BRIDGE BARRIER RAILING, TYPE 6 OUTSIDE ELEVATION



SECTION A-A

NO AESTHETIC TREATMENT

APPROVED BY: \_\_\_\_\_  
DIRECTOR, BUREAU OF BRIDGES AND STRUCTURES

APPROVED BY: \_\_\_\_\_  
DIRECTOR, BUREAU OF FIELD SERVICES

APPROVED BY: \_\_\_\_\_  
DIRECTOR, BUREAU OF DEVELOPMENT



DEPARTMENT DIRECTOR  
BRADLEY C. WIEFERICH, PE

STANDARD PLAN FOR  
BRIDGE BARRIER RAILING, TYPE 6

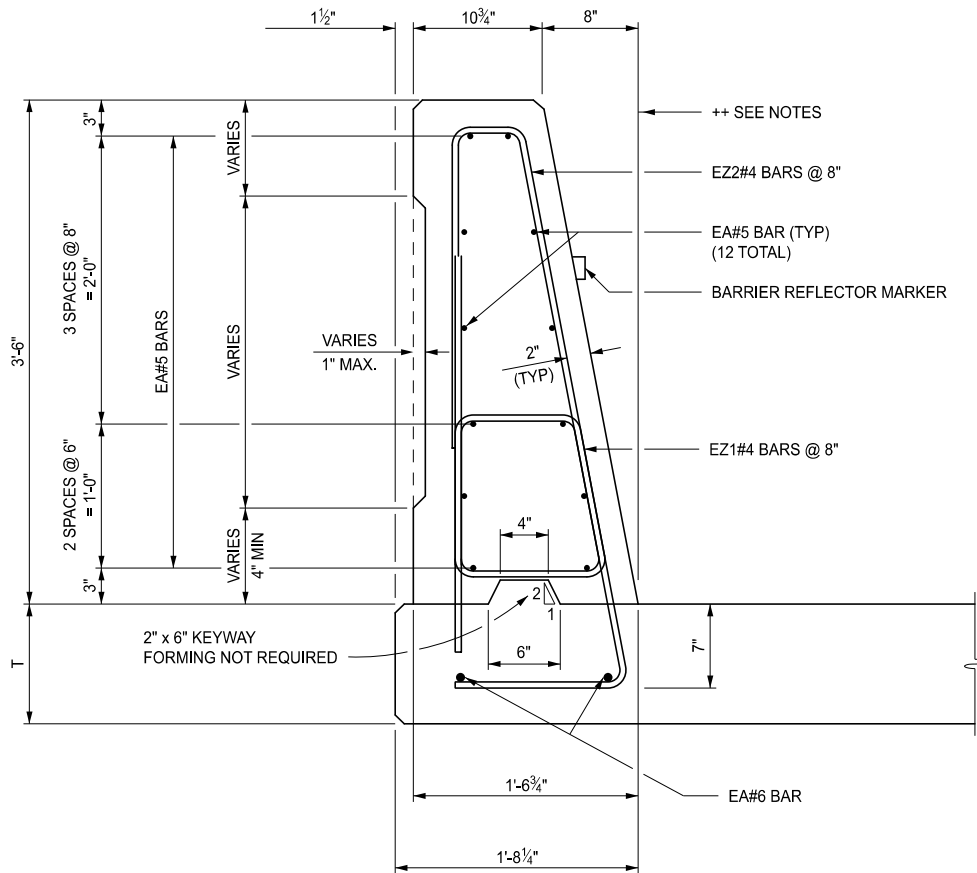
(SPECIAL DETAIL)  
FHWA APPROVAL

09/02/2020  
PLAN DATE

B-29-A

SHEET  
1 OF 8





### SECTION A-A

BRIDGE BARRIER RAILING, AESTHETIC, TYPE 6, DET 2

( THE TYPE AND LIMITS OF THE AESTHETIC TREATMENT, )  
( IF APPLICABLE, ARE AS DETAILED ON THE PLANS. )



DEPARTMENT DIRECTOR  
BRADLEY C. WIEFERICH, PE

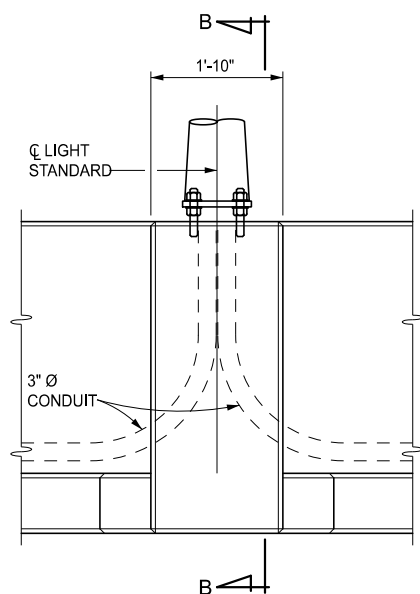
STANDARD PLAN FOR  
BRIDGE BARRIER RAILING, TYPE 6

(SPECIAL DETAIL)  
FHWA APPROVAL

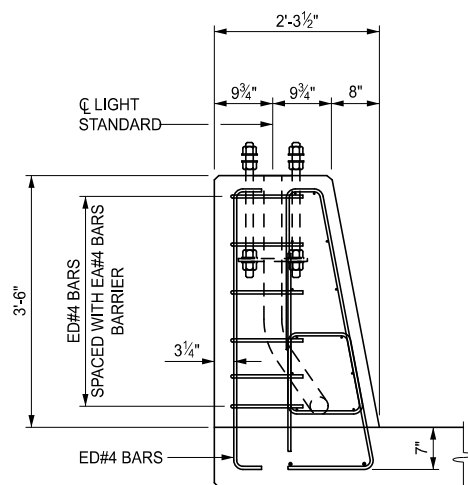
09/02/2020  
PLAN DATE

B-29-A

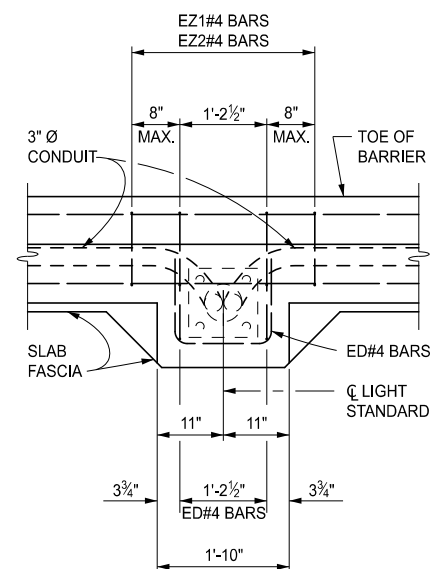
SHEET  
3 OF 8



ELEVATION VIEW



SECTION B-B



PLAN VIEW

### LIGHT STANDARD DETAILS

NO AESTHETIC TREATMENT ON LIGHT STANDARD 1'-10" x 9 3/4" PROTRUSION



DEPARTMENT DIRECTOR  
BRADLEY C. WIEFERICH, PE

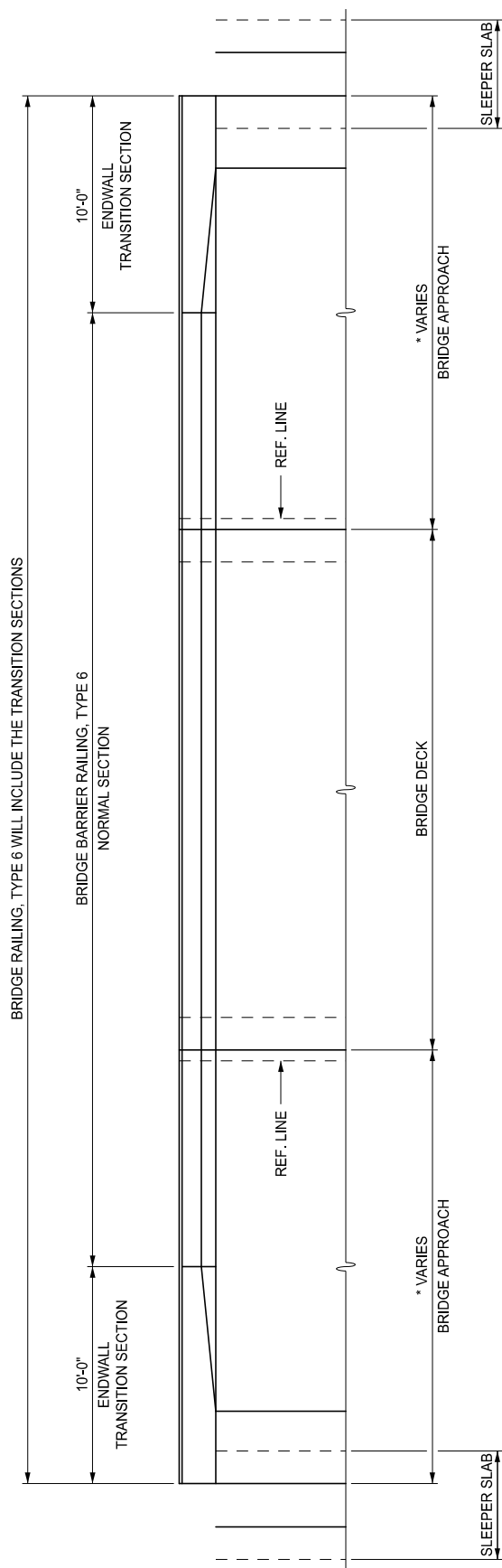
STANDARD PLAN FOR  
BRIDGE BARRIER RAILING, TYPE 6

(SPECIAL DETAIL)  
FHWA APPROVAL

09/02/2020  
PLAN DATE

B-29-A

SHEET  
4 OF 8



### BRIDGE BARRIER RAILING, TYPE 6 PLAN VIEW

\* DEPENDANT UPON BRIDGE APPROACH LENGTH, THE TRANSITION SECTION CAN BE PARTLY ON BRIDGE DECK OR IF NO APPROACH SLAB IS PRESENT, ENTIRELY ON THE BRIDGE DECK.



DEPARTMENT DIRECTOR  
BRADLEY C. WIEFERICH, PE

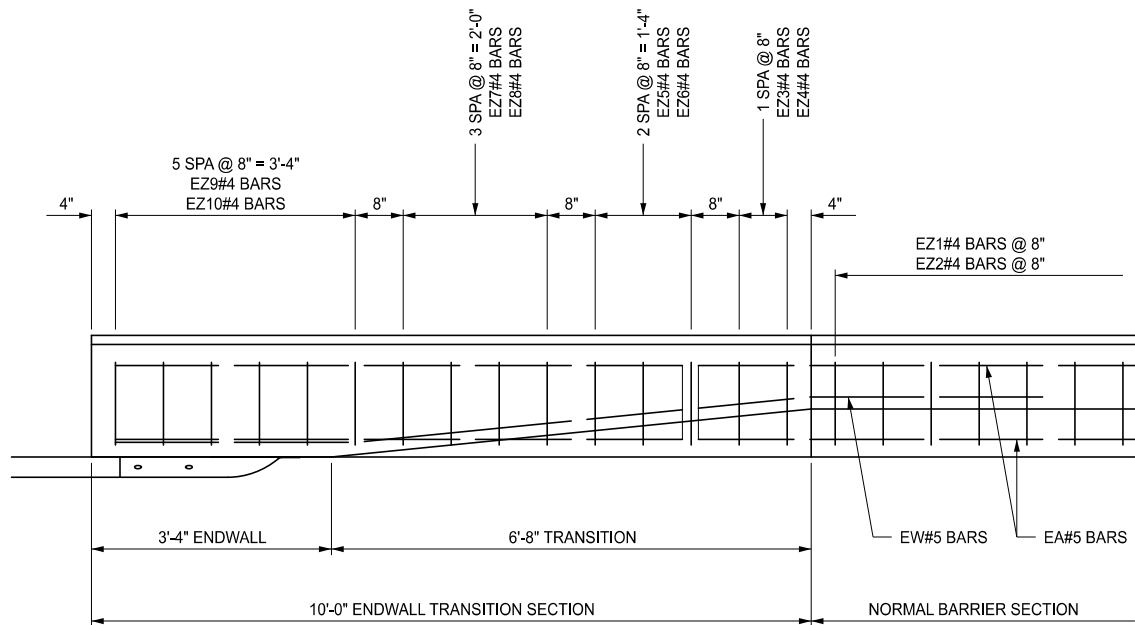
### STANDARD PLAN FOR BRIDGE BARRIER RAILING, TYPE 6

(SPECIAL DETAIL)  
FHWA APPROVAL

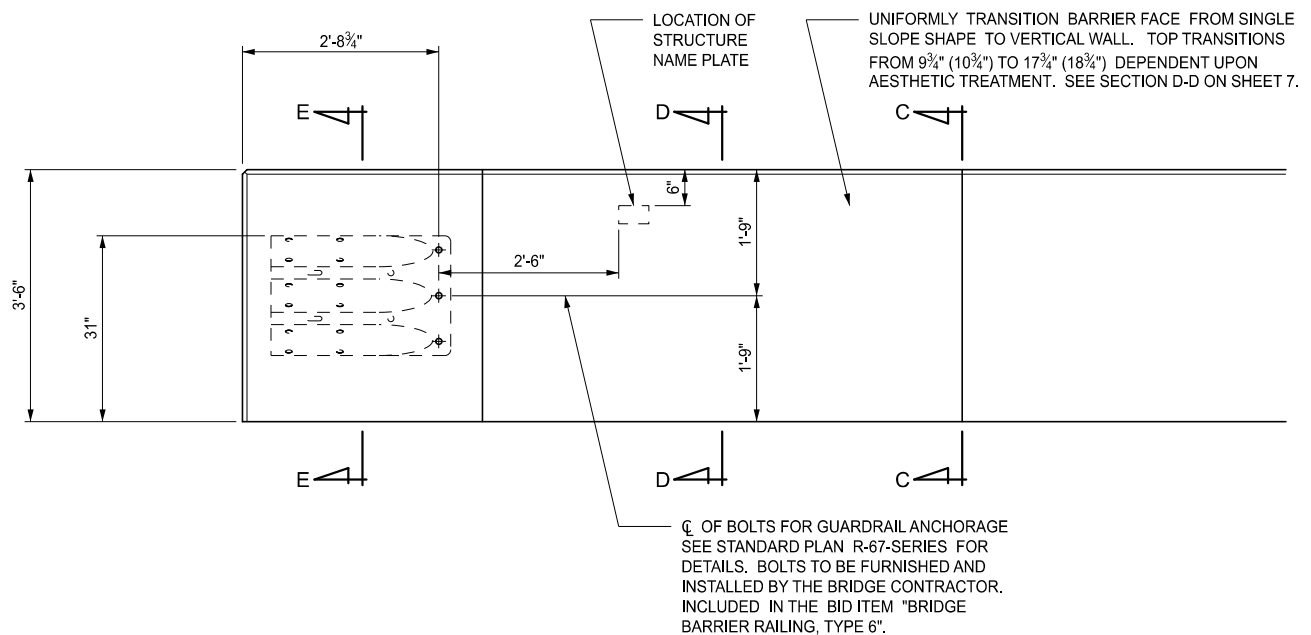
09/02/2020  
PLAN DATE

B-29-A

SHEET  
5 OF 8



PLAN VIEW



ELEVATION VIEW



DEPARTMENT DIRECTOR  
BRADLEY C. WIEFERICH, PE

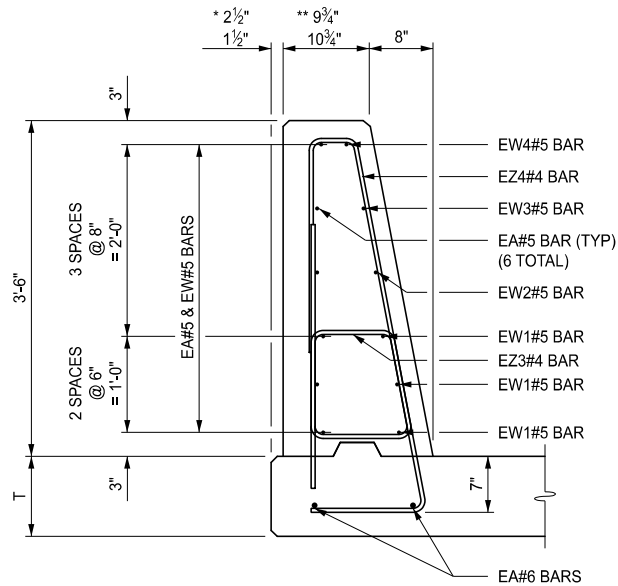
STANDARD PLAN FOR  
BRIDGE BARRIER RAILING, TYPE 6

(SPECIAL DETAIL)  
FHWA APPROVAL

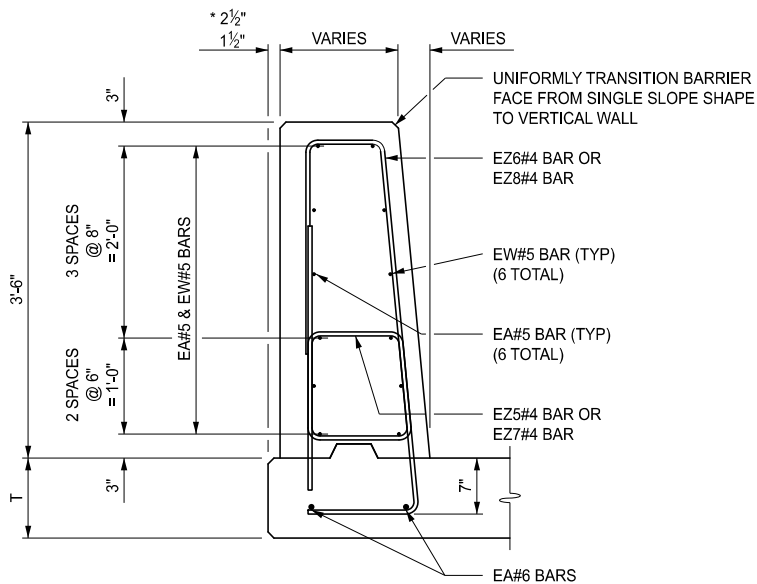
09/02/2020  
PLAN DATE

B-29-A

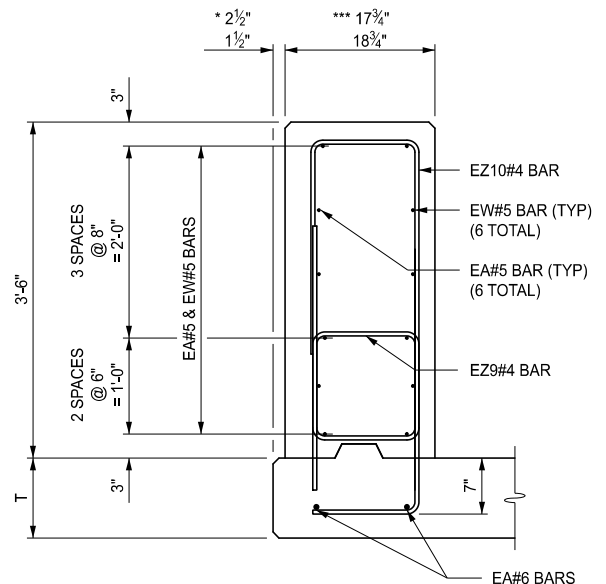
SHEET  
6 OF 8



SECTION C-C



SECTION D-D



SECTION E-E

- \* 2 1/2" BRIDGE BARRIER RAILING, TYPE 6 (+ SEE NOTES)  
 2 1/2" BRIDGE BARRIER RAILING, AESTHETIC, TYPE 6, DET 1 (+ SEE NOTES)  
 1 1/2" BRIDGE BARRIER RAILING, AESTHETIC, TYPE 6, DET 2
- \*\* 9 3/4" BRIDGE BARRIER RAILING, TYPE 6 (+ SEE NOTES)  
 9 3/4" BRIDGE BARRIER RAILING, AESTHETIC, TYPE 6, DET 1 (+ SEE NOTES)  
 10 3/4" BRIDGE BARRIER RAILING, AESTHETIC, TYPE 6, DET 2
- \*\*\* 17 3/4" BRIDGE BARRIER RAILING, TYPE 6 (+ SEE NOTES)  
 17 3/4" BRIDGE BARRIER RAILING, AESTHETIC, TYPE 6, DET 1 (+ SEE NOTES)  
 18 3/4" BRIDGE BARRIER RAILING, AESTHETIC, TYPE 6, DET 2



DEPARTMENT DIRECTOR  
BRADLEY C. WIEFERICH, PE

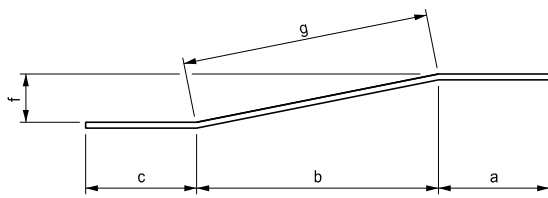
STANDARD PLAN FOR  
BRIDGE BARRIER RAILING, TYPE 6

(SPECIAL DETAIL)  
FHWA APPROVAL

09/02/2023  
PLAN DATE

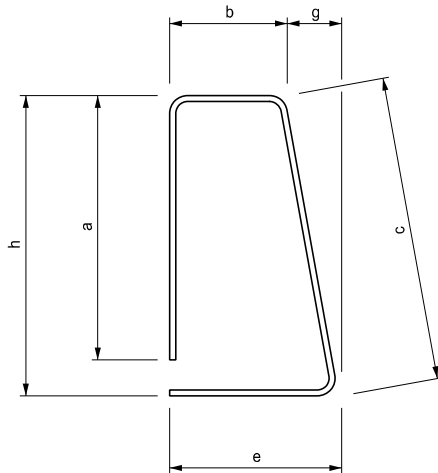
B-29-A

SHEET  
7 OF 8



ENDWALL TRANSITION SECTION BARS							
	# of bars	c	b	a	g	f	
EW1	3	2'-2"	2'-8"	7'-6"	2'-8"	1' <sup>5</sup> / <sub>8</sub> "	EW051204
EW2	1	2'-2"	6'-0"	4'-2' <sup>7</sup> / <sub>8</sub> "	6'-0' <sup>1</sup> / <sub>8</sub> "	4' <sup>1</sup> / <sub>4</sub> "	EW051205
EW3	1	2'-2"	6'-0"	4'-3' <sup>3</sup> / <sub>4</sub> "	6'-0' <sup>1</sup> / <sub>4</sub> "	5' <sup>3</sup> / <sub>4</sub> "	EW051206
EW4	1	2'-2"	6'-0"	4'-4' <sup>5</sup> / <sub>8</sub> "	6'-0' <sup>3</sup> / <sub>8</sub> "	6' <sup>7</sup> / <sub>8</sub> "	EW051207

$$L = c + a + g$$

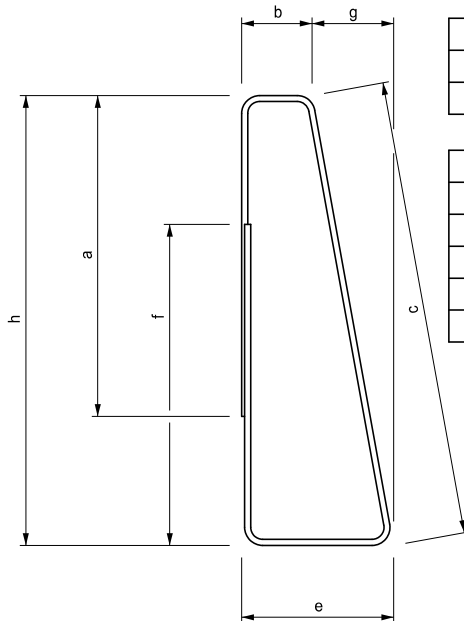


BARRIER SECTION BARS							
	# of bars	a	b	c	e	g	h
EZ1	--	1'-8' <sup>1</sup> / <sub>8</sub> "	10' <sup>3</sup> / <sub>4</sub> "	1'-11' <sup>1</sup> / <sub>8</sub> "	1'-3"	4' <sup>1</sup> / <sub>4</sub> "	1'-10' <sup>3</sup> / <sub>4</sub> "

$$L = a + b + c + e$$

ENDWALL TRANSITION SECTION BARS								
	# of bars	a	b	c	e	g	h	
EZ3	2	1'-8"	10' <sup>3</sup> / <sub>8</sub> "	1'-11' <sup>1</sup> / <sub>8</sub> "	1'-2' <sup>1</sup> / <sub>2</sub> "	4' <sup>1</sup> / <sub>8</sub> "	1'-10' <sup>3</sup> / <sub>4</sub> "	EZ040508
EZ5	3	1'-7' <sup>3</sup> / <sub>4</sub> "	11"	1'-11"	1'-2' <sup>1</sup> / <sub>4</sub> "	3' <sup>1</sup> / <sub>4</sub> "	1'-10' <sup>3</sup> / <sub>4</sub> "	EZ040508
EZ7	4	1'-7' <sup>1</sup> / <sub>2</sub> "	11' <sup>3</sup> / <sub>4</sub> "	1'-10' <sup>7</sup> / <sub>8</sub> "	1'-1' <sup>1</sup> / <sub>8</sub> "	2' <sup>1</sup> / <sub>8</sub> "	1'-10' <sup>3</sup> / <sub>4</sub> "	EZ040508
EZ9	6	1'-7' <sup>3</sup> / <sub>4</sub> "	1'-1' <sup>3</sup> / <sub>4</sub> "	1'-10' <sup>3</sup> / <sub>4</sub> "	1'-1' <sup>3</sup> / <sub>4</sub> "	--	1'-10' <sup>3</sup> / <sub>4</sub> "	EZ040510

$$L = a + b + c + e$$



BARRIER SECTION BARS									
	# of bars	a	b	c	e	f	g	h	
EZ2	--	2'-3' <sup>3</sup> / <sub>8</sub> "	6' <sup>1</sup> / <sub>8</sub> "	3'-2' <sup>1</sup> / <sub>4</sub> "	1'-1' <sup>1</sup> / <sub>4</sub> "	2'-3"	7' <sup>1</sup> / <sub>8</sub> "	3'-1' <sup>5</sup> / <sub>8</sub> "	EZ040904

$$L = a + b + c + e + f$$

ENDWALL TRANSITION SECTION BARS									
	# of bars	a	b	c	e	f	g	h	
EZ4	2	2'-3' <sup>1</sup> / <sub>2</sub> "	6' <sup>1</sup> / <sub>2</sub> "	3'-2"	1'-1"	2'-3"	6' <sup>1</sup> / <sub>2</sub> "	3'-1' <sup>1</sup> / <sub>2</sub> "	EZ040904
EZ6	3	2'-3' <sup>7</sup> / <sub>8</sub> "	8' <sup>1</sup> / <sub>8</sub> "	3'-1' <sup>7</sup> / <sub>8</sub> "	1'-1' <sup>1</sup> / <sub>8</sub> "	2'-3"	5"	3'-1' <sup>1</sup> / <sub>2</sub> "	EZ040906
EZ8	4	2'-3' <sup>5</sup> / <sub>8</sub> "	10' <sup>1</sup> / <sub>2</sub> "	3'-1' <sup>5</sup> / <sub>8</sub> "	1'-1' <sup>1</sup> / <sub>4</sub> "	2'-3"	2' <sup>3</sup> / <sub>4</sub> "	3'-1' <sup>1</sup> / <sub>2</sub> "	EZ040908
EZ10	6	2'-3' <sup>1</sup> / <sub>2</sub> "	1'-1' <sup>1</sup> / <sub>2</sub> "	3'-1' <sup>1</sup> / <sub>2</sub> "	1'-1' <sup>1</sup> / <sub>2</sub> "	2'-3"	--	3'-1' <sup>1</sup> / <sub>2</sub> "	EZ040911

$$L = a + b + c + e + f$$

#### NOTES:

DETAILS SHOWN ARE IN ACCORDANCE WITH CURRENT AASHTO SPECIFICATIONS.

FOR LIGHT STANDARD ANCHOR BOLT ASSEMBLY DETAILS, SEE STANDARD PLAN B-103-SERIES.

ALL WORK AND MATERIAL SHALL BE IN ACCORDANCE WITH THE STANDARD SPECIFICATIONS.

+ BACK OF BARRIER TO SLAB FASCIA MAY BE DECREASED TO 1'<sup>1</sup>/<sub>2</sub>" (FROM 2'<sup>1</sup>/<sub>2</sub>") AND TOE OF BARRIER SHIFTED ACCORDINGLY TO ACCOMMODATE THE NEED FOR INCREASED OR MAINTAINING SHOULDER WIDTHS. DISTANCE TO BE DETAILED ON THE PLANS.

++ BRIDGE BARRIER ORIENTATION :

PERPENDICULAR TO PLANE OF SLAB ON NORMAL CROWN SECTION AND HIGH SIDE OF SUPERELEVATION SECTION.  
VERTICAL ON LOW SIDE OF SUPERELEVATED SECTION.



DEPARTMENT DIRECTOR  
BRADLEY C. WIEFERICH, PE

#### STANDARD PLAN FOR BRIDGE BARRIER RAILING, TYPE 6

(SPECIAL DETAIL)  
FHWA APPROVAL

09/02/2020  
PLAN DATE

B-29-A

SHEET  
8 OF 8