

PREPARED  
BY  
DESIGN DIVISION

DRAWN BY: B.L.T.

CHECKED BY: W.K.P.

DEPARTMENT DIRECTOR  
Kirk T. Stedle

APPROVED BY: \_\_\_\_\_  
DIRECTOR, BUREAU OF FIELD SERVICES

APPROVED BY: \_\_\_\_\_  
DIRECTOR, BUREAU OF DEVELOPMENT

MICHIGAN DEPARTMENT OF TRANSPORTATION  
BUREAU OF DEVELOPMENT SPECIAL DETAIL

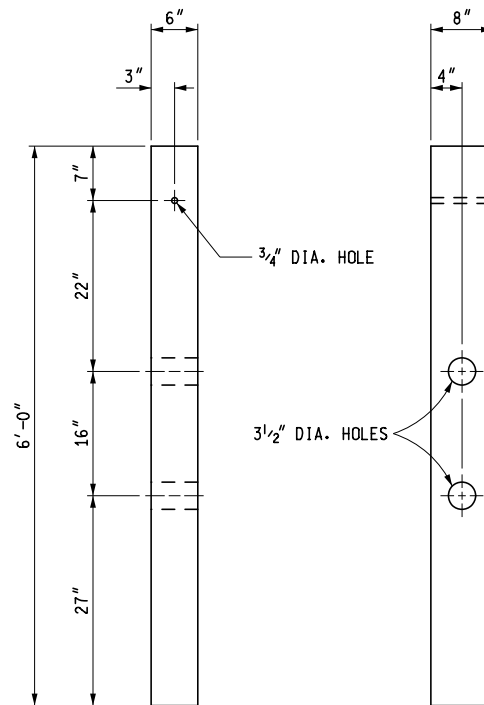
## GUARDRAIL AT INTERSECTIONS

F.H.W.A. APPROVAL

4-9-2018  
PLAN DATE

SPECIAL  
DETAIL 21

SHEET  
1 OF 2



CONTROLLED RELEASING TERMINAL POST  
( CRT )

NOTES:

THE SLOPE IN FRONT OF THE INSTALLATION SHOULD NOT EXCEED 1:10 AND EXTEND TO 2'-0" BEYOND THE GUARDRAIL POST. THE SLOPE BEYOND THIS HINGE LINE SHALL BE 1:2 OR FLATTER.

THE CROSS HATCHED AREA BEHIND THE CURVED GUARDRAIL SHOULD BE KEPT FREE OF FIXED OBJECTS.

MICHIGAN DEPARTMENT OF TRANSPORTATION  
BUREAU OF DEVELOPMENT SPECIAL DETAIL

GUARDRAIL AT INTERSECTIONS

F.H.W.A. APPROVAL

4-9-2018  
PLAN DATE

SPECIAL  
DETAIL 21

SHEET  
2 OF 2