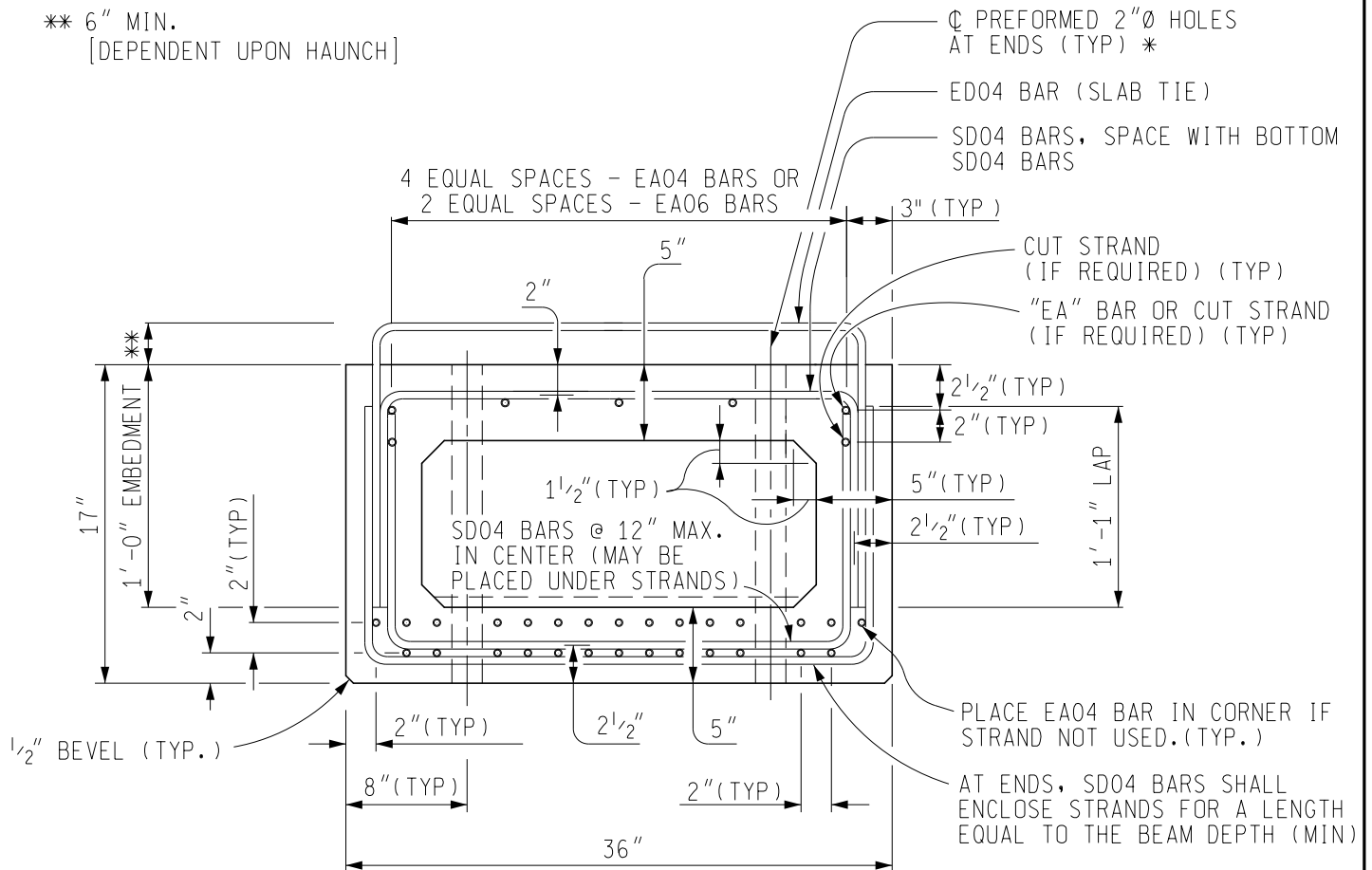


DRAWN BY: BLT
CHECKED BY: VZ
APPROVED BY: BMW

MICHIGAN DEPARTMENT OF TRANSPORTATION
BUREAU OF DEVELOPMENT

PRESTRESSED CONCRETE 3' WIDE
BOX BEAM REINFORCEMENT DETAILS

ISSUED: 09/26/22
SUPERSEDES: 12/27/21



TYPICAL SECTION - 17" BEAMS

PLAN NOTES:

WHERE REQUIRED, DECREASE VOID BOXES HEIGHT TO PROVIDE 1 1/2" CLEAR COVER FOR PRESTRESSING STRANDS IN UPPER ROW.

NOTES:

MINIMUM REINFORCEMENT SHOWN.

* IF REQUIRED FOR STRENGTH, USE 3"Ø HOLES FOR BUNDLED REINFORCEMENT FOR CONTINUOUS FOR LIVE LOAD INTEGRAL STUB ABUTMENTS.

PLACE SPREAD BOX BEAM DIAPHRAGM/BACKWALL INSERTS AT 5" OR 7" UP FROM BOTTOM OF BEAM AND 3 1/2" OR 5 1/2" DOWN FROM TOP OF BEAM.

EA AND ED BARS ARE GRADE 60 (ksi) STEEL.

SD BARS ARE GRADE 60 (ksi) STAINLESS STEEL.

DESIGN AND SPACING OF ED AND SD BARS IS BASED ON GRADE 40 (ksi).

ADD BRIDGE DESIGN MANUAL NOTE 8.07.03P TO THE PLANS.

PREPARED BY
DESIGN DIVISION

6.65.10