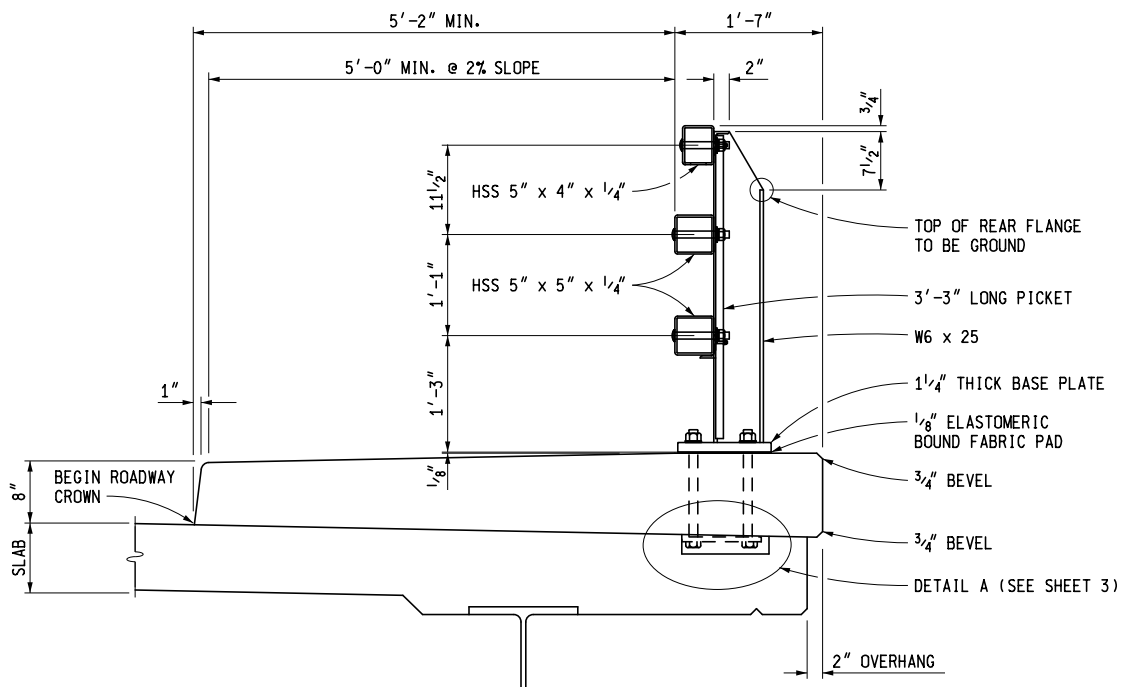


SECTION THROUGH RAILING WITH BRUSH BLOCK



SECTION THROUGH RAILING WITH SIDEWALK



PREPARED
BY
DESIGN DIVISION

DRAWN BY: B.L.T.

CHECKED BY: V.Z.

DEPARTMENT DIRECTOR
Kirk T. Steudle

APPROVED BY:

[Signature]
DIRECTOR, BUREAU OF FIELD SERVICES

APPROVED BY:

[Signature]
DIRECTOR, BUREAU OF DEVELOPMENT

MICHIGAN DEPARTMENT OF TRANSPORTATION
BUREAU OF DEVELOPMENT STANDARD PLAN FOR

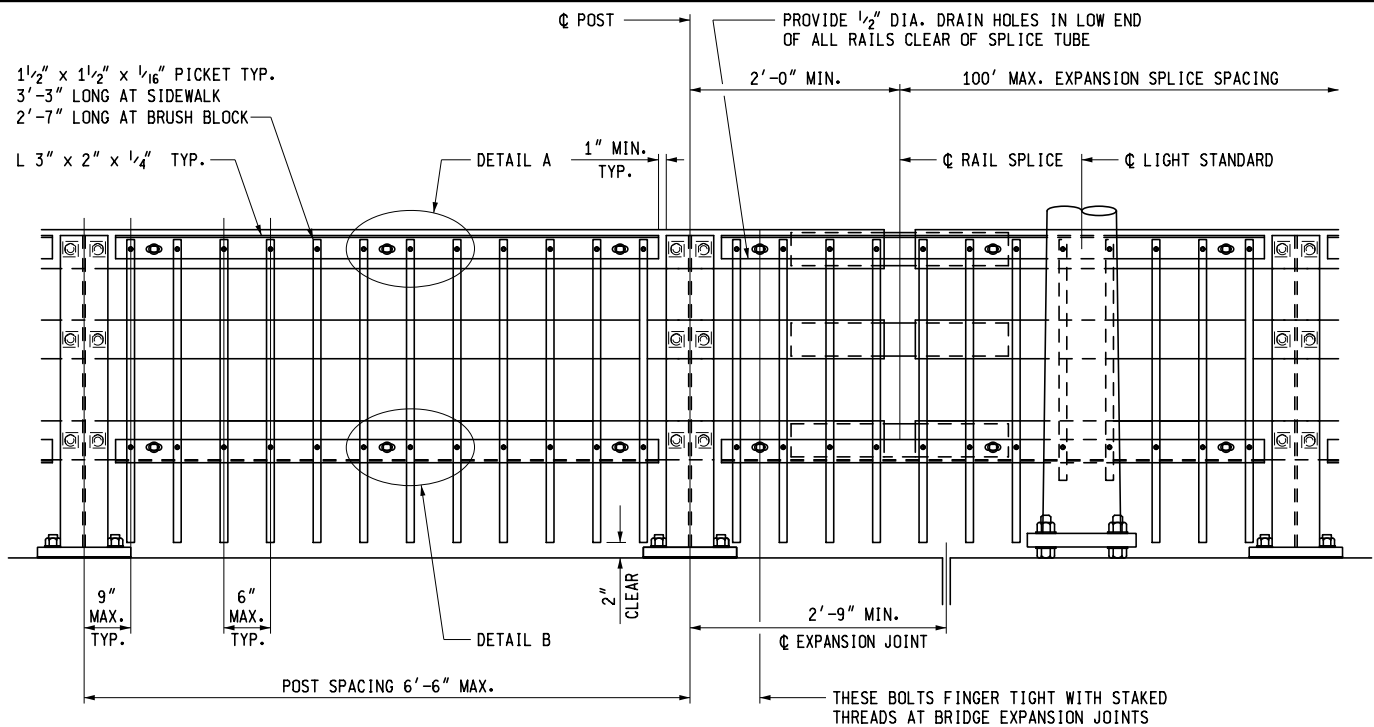
BRIDGE RAILING, 3 TUBE WITH PICKETS

11-8-2016
F.H.W.A. APPROVAL

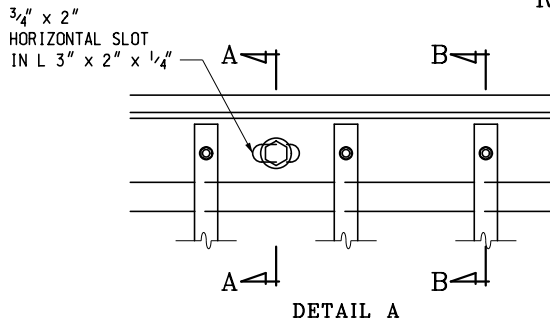
9-17-2015
PLAN DATE

B-27-A

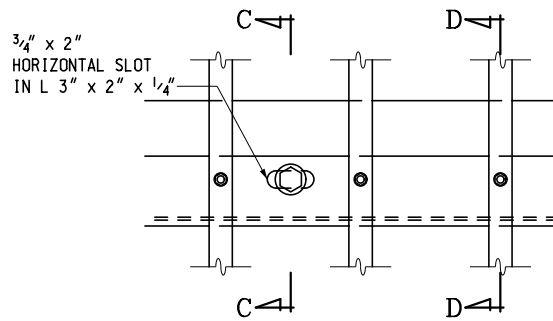
SHEET
1 OF 7



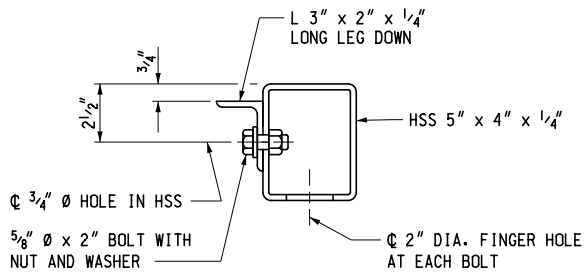
RAILING ELEVATION
(AT SIDEWALK SHOWN)



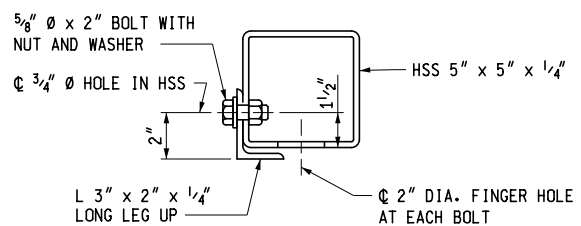
DETAIL A



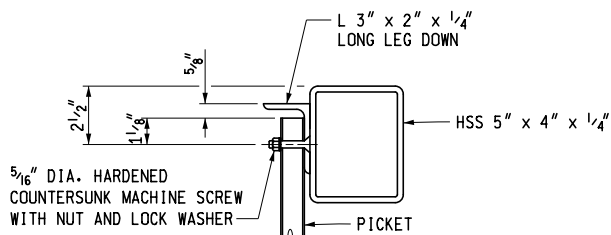
DETAIL B



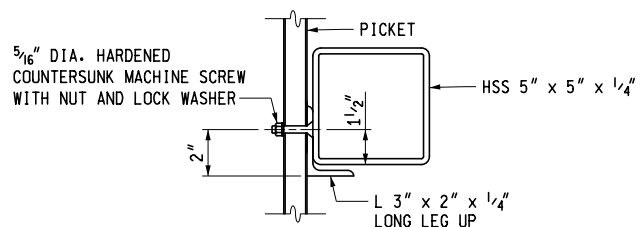
SECTION A - A



SECTION C - C



SECTION B - B



SECTION D - D

PICKET TO RAIL DETAILS

MICHIGAN DEPARTMENT OF TRANSPORTATION
BUREAU OF DEVELOPMENT STANDARD PLAN FOR

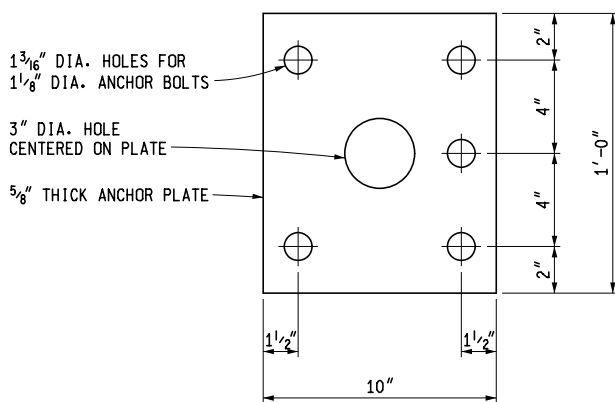
BRIDGE RAILING,
3 TUBE WITH PICKETS

11-8-2016
F.H.W.A. APPROVAL

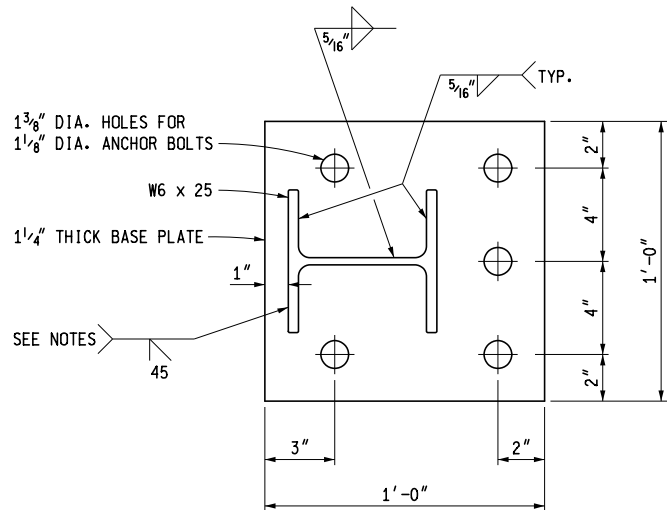
9-17-2015
PLAN DATE

B-27-A

SHEET
2 OF 7

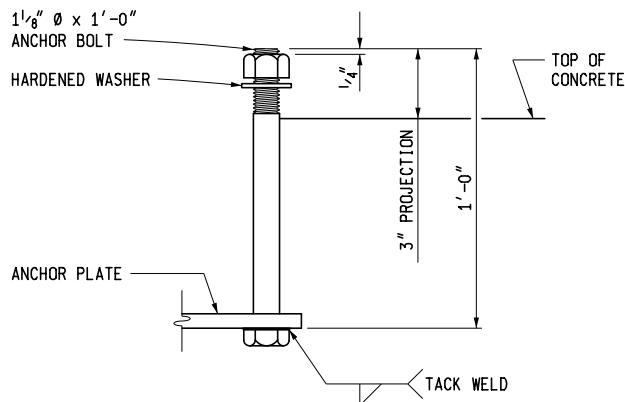


ANCHOR PLATE

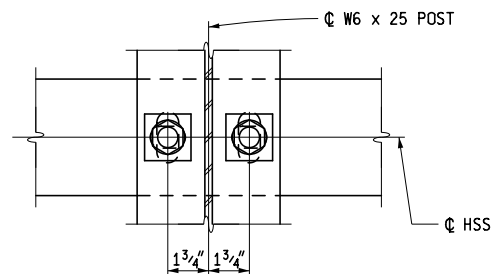


BASE PLATE

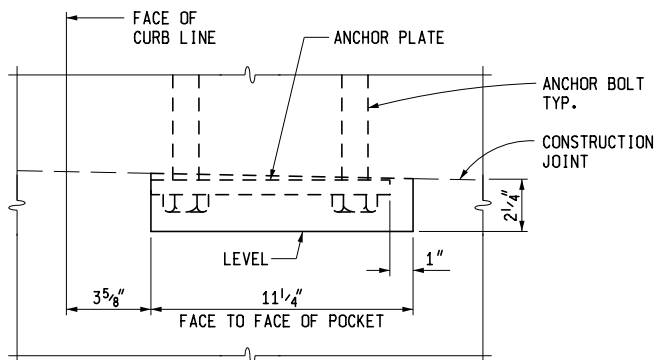
NOTE:
POST FLANGE WELD DOES NOT REQUIRE MAGNETIC PARTICLE
TESTING. WELD SHALL BE BACK-GOUGED ON BACK SIDE
EXCEPT AT WEB. WELD IS THE SAME ON BOTH FLANGES.



ANCHOR BOLT

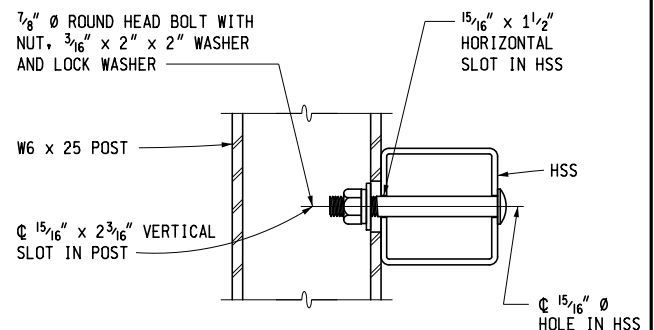


SECTION THROUGH POST WEB



DETAIL A

NOTE:
PROVIDE 15 3/4" LONG x 11 1/4" WIDE x 2 1/4" DEEP POCKET IN THE DECK
SLAB AT THE LOCATION OF EACH RAIL POST. USE AT BRUSH BLOCK
SECTION AND AT SIDEWALK FASCIA LESS THAN 10".



SECTION THROUGH RAIL

RAIL TO POST CONNECTIONS

MICHIGAN DEPARTMENT OF TRANSPORTATION
BUREAU OF DEVELOPMENT STANDARD PLAN FOR

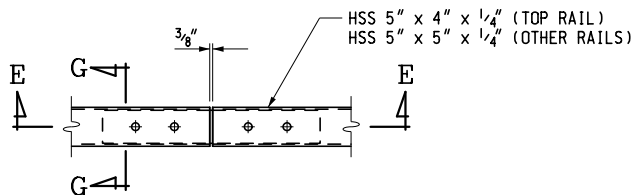
BRIDGE RAILING, 3 TUBE WITH PICKETS

11-8-2016
F.H.W.A. APPROVAL

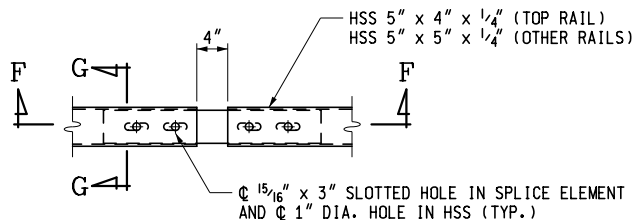
9-17-2015
PLAN DATE

B-27-A

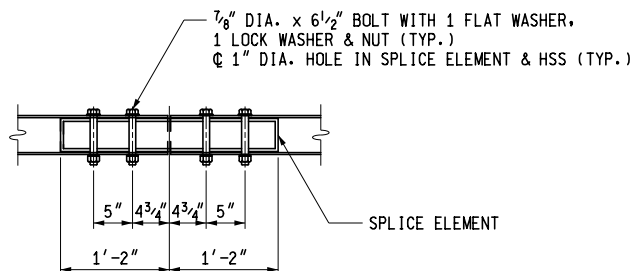
SHEET
3 OF 7



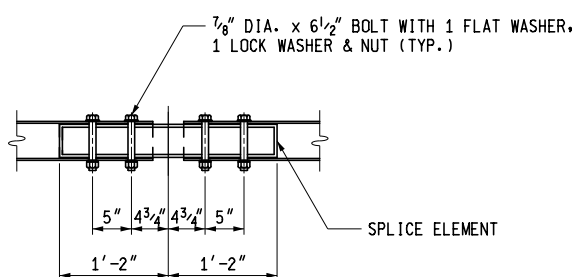
FIXED SPLICE PLAN



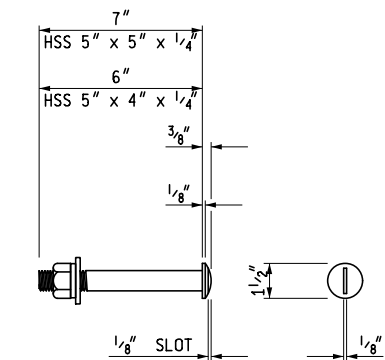
EXPANSION SPLICE PLAN



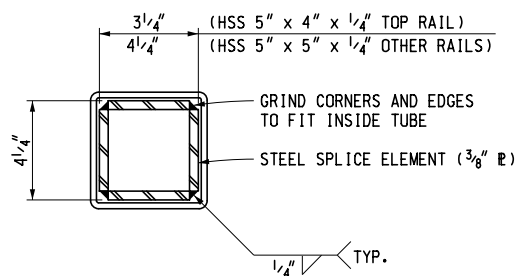
SECTION E - E



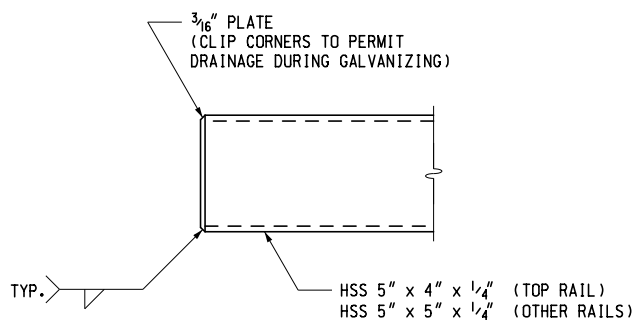
SECTION F - F



7/8" Ø ROUND HEAD BOLT



SECTION G - G



END OF RAIL DETAIL

MICHIGAN DEPARTMENT OF TRANSPORTATION
BUREAU OF DEVELOPMENT STANDARD PLAN FOR

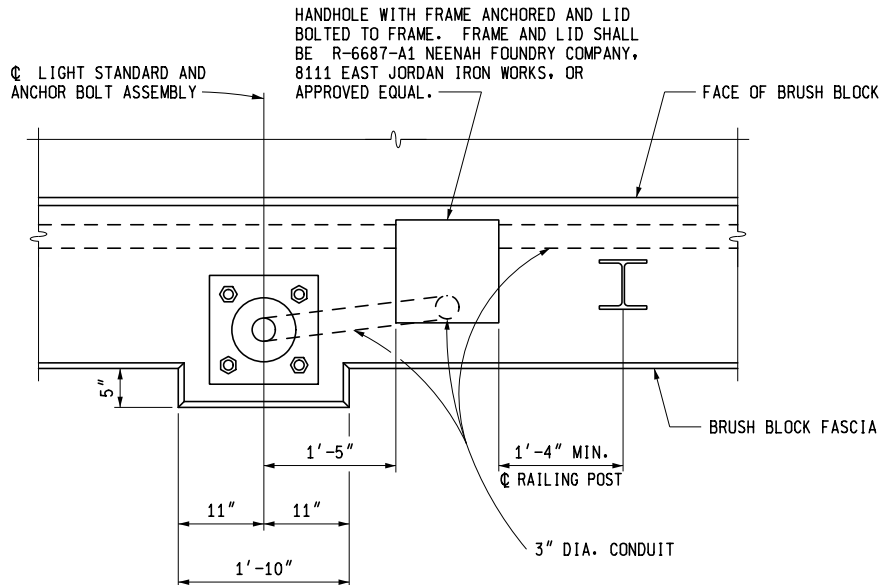
BRIDGE RAILING, 3 TUBE WITH PICKETS

11-8-2016
F.H.W.A. APPROVAL

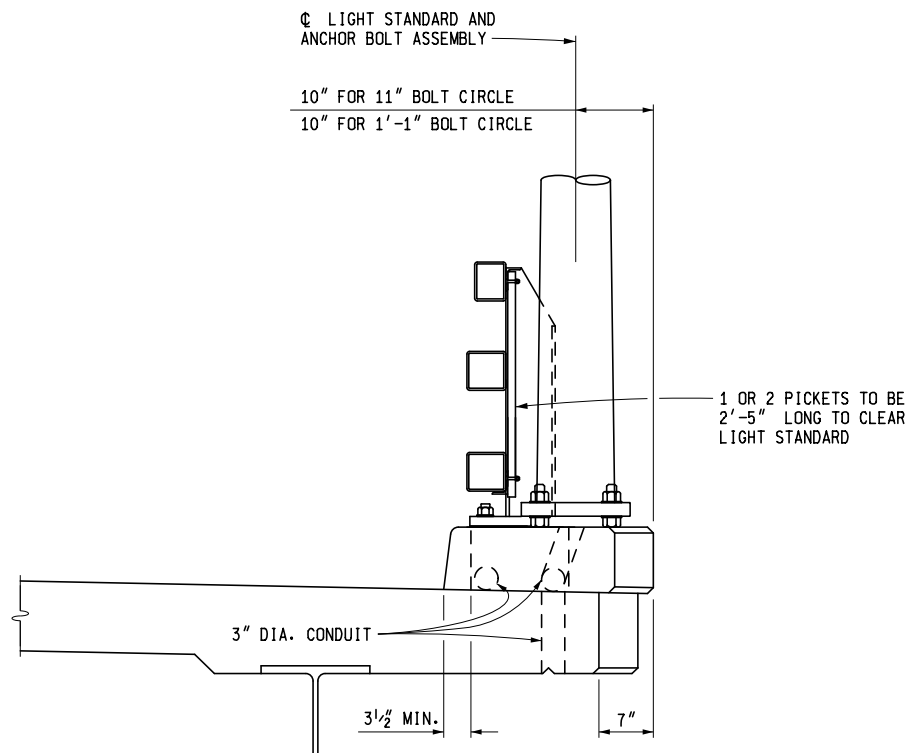
9-17-2015
PLAN DATE

B-27-A

SHEET
4 OF 7



PLAN VIEW AT LIGHT STANDARD WITH BRUSH BLOCK



SECTION AT LIGHT STANDARD WITH BRUSH BLOCK

MICHIGAN DEPARTMENT OF TRANSPORTATION
BUREAU OF DEVELOPMENT STANDARD PLAN FOR

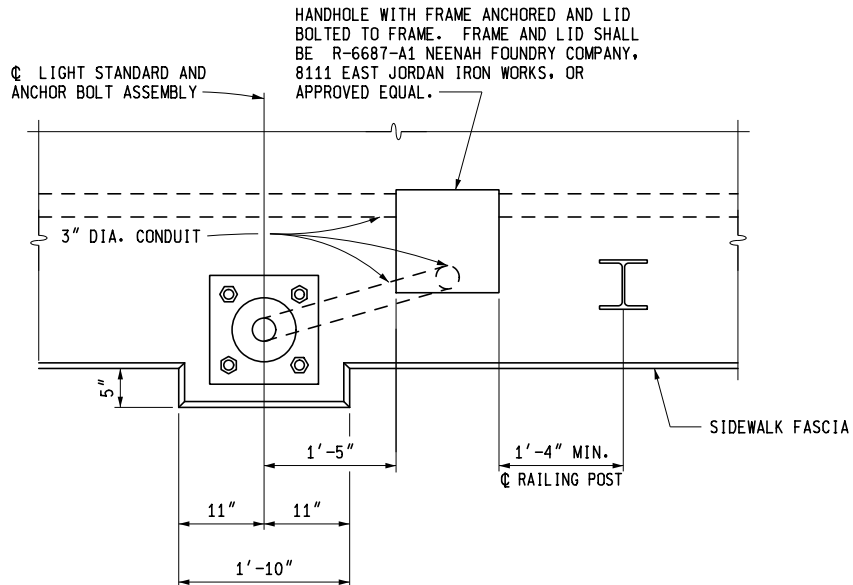
**BRIDGE RAILING,
3 TUBE WITH PICKETS**

11-8-2016
F.H.W.A. APPROVAL

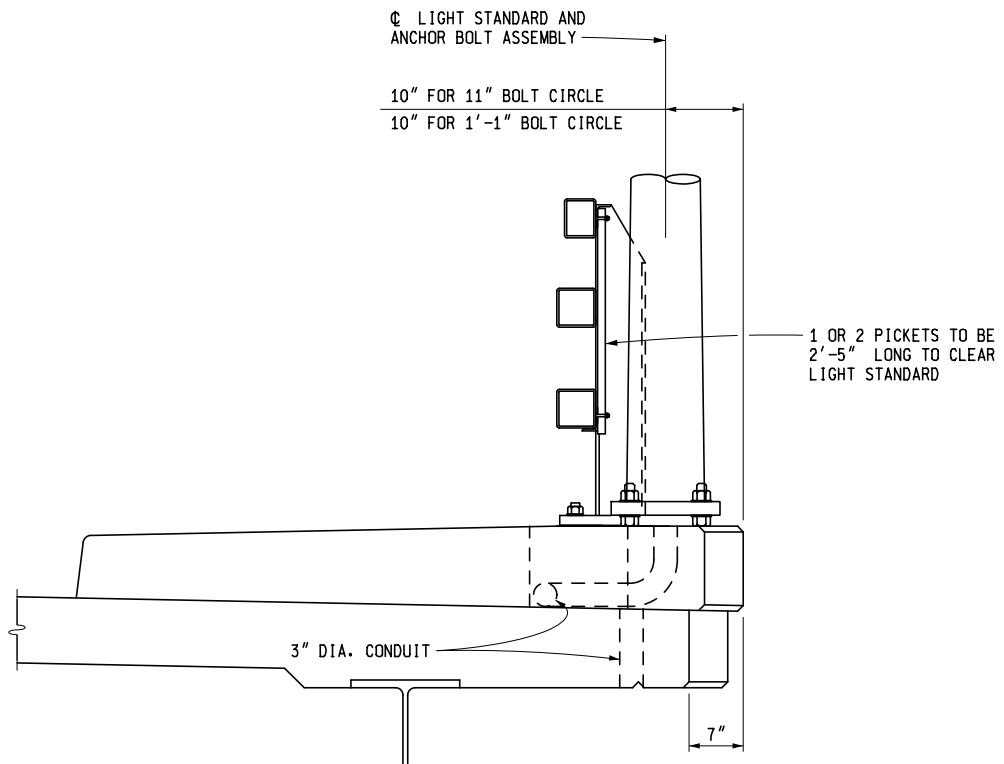
9-17-2015
PLAN DATE

B-27-A

SHEET
5 OF 7



PLAN VIEW AT LIGHT STANDARD WITH SIDEWALK



SECTION THROUGH RAILING WITH SIDEWALK

MICHIGAN DEPARTMENT OF TRANSPORTATION
 BUREAU OF DEVELOPMENT STANDARD PLAN FOR

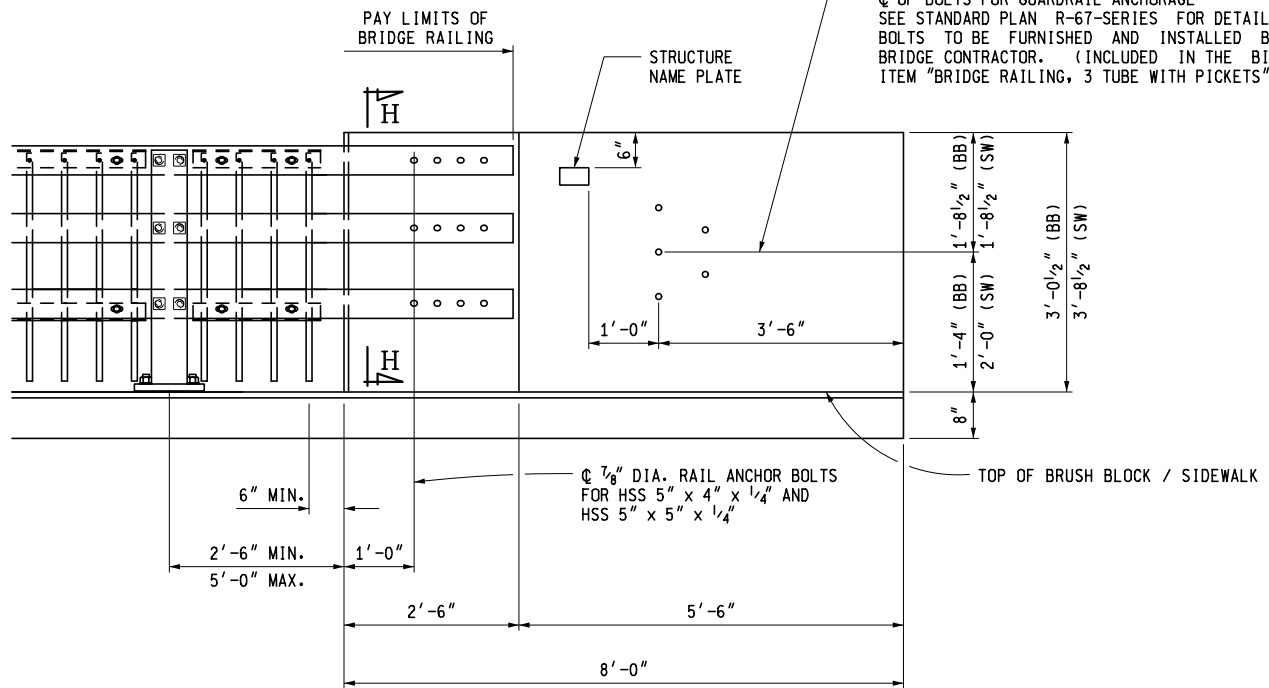
BRIDGE RAILING, 3 TUBE WITH PICKETS

11-8-2016
 F.H.W.A. APPROVAL

9-17-2015
 PLAN DATE

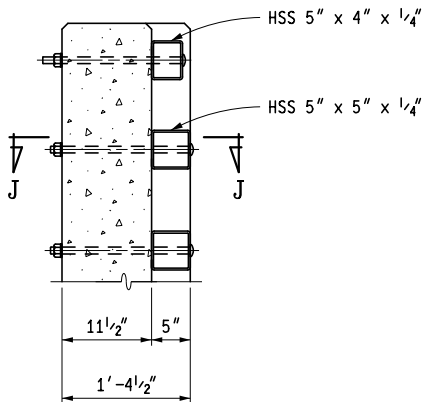
B-27-A

SHEET
 6 OF 7

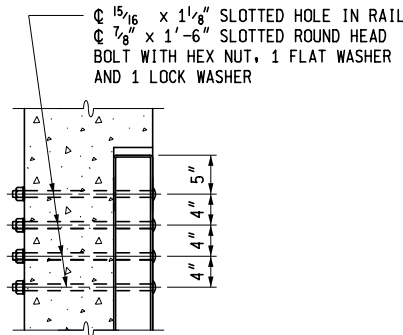


END WALL ELEVATION

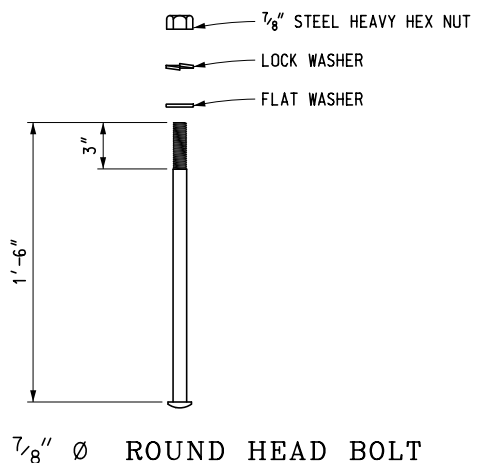
BB = BRUSH BLOCK
SW = SIDEWALK



SECTION H - H



SECTION J - J



7/8" Ø ROUND HEAD BOLT

NOTES:

RAILS SHALL BE CONTINUOUS OVER A MINIMUM OF FOUR (4) POSTS WITHOUT SPLICES WHERE POSSIBLE. RAILS SHALL BE SPLICED IN A PANEL OVER EXPANSION JOINTS.

DETAILS SHOWN ARE ACCORDING TO THE CURRENT AASHTO SPECIFICATIONS.

ALL WORK AND MATERIAL SHALL BE ACCORDING TO THE CURRENT STANDARD SPECIFICATIONS UNLESS OTHERWISE NOTED ON THIS PLAN.

MICHIGAN DEPARTMENT OF TRANSPORTATION
BUREAU OF DEVELOPMENT STANDARD PLAN FOR

BRIDGE RAILING, 3 TUBE WITH PICKETS

11-8-2016
F.H.W.A. APPROVAL

9-17-2015
PLAN DATE

B-27-A

SHEET
7 OF 7