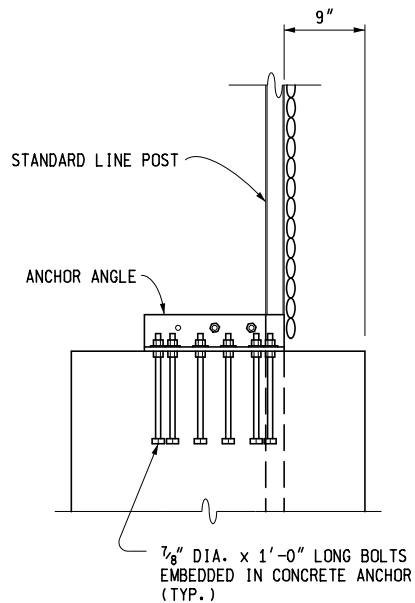
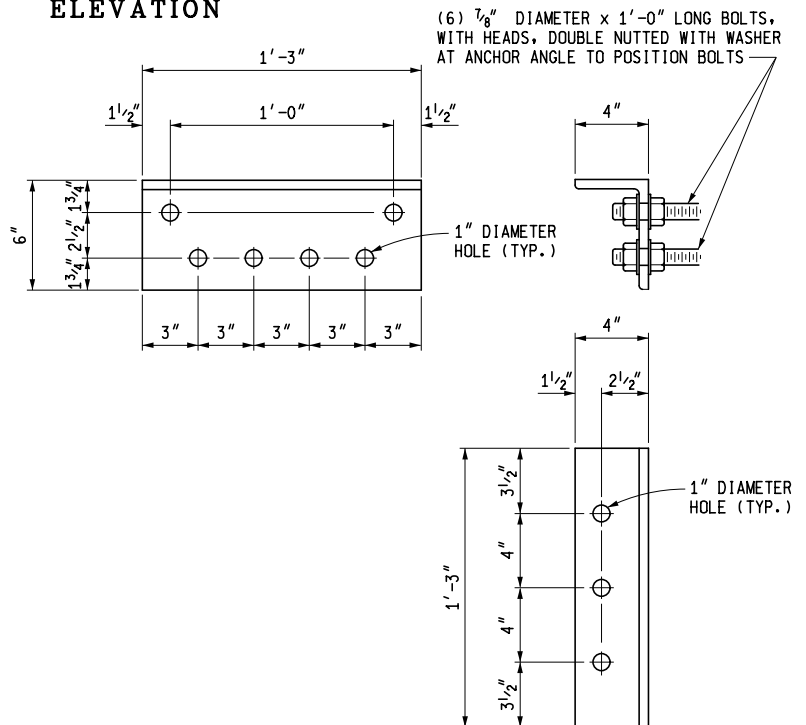


ELEVATION



END VIEW OF CONCRETE ANCHOR

CONCRETE QUANTITY FOR ANCHOR = 0.5 CYD



L6" x 4" x 1/2" x 1'-3" LONG ANCHOR ANGLE



PREPARED
BY
DESIGN DIVISION

DRAWN BY: B.L.T.

CHECKED BY: W.K.P.

DEPARTMENT DIRECTOR
Kirk T. Steudle

APPROVED BY: _____
DIRECTOR, BUREAU OF FIELD SERVICES

APPROVED BY: _____
DIRECTOR, BUREAU OF HIGHWAY DEVELOPMENT

MICHIGAN DEPARTMENT OF TRANSPORTATION
BUREAU OF HIGHWAY DEVELOPMENT SPECIAL DETAIL FOR

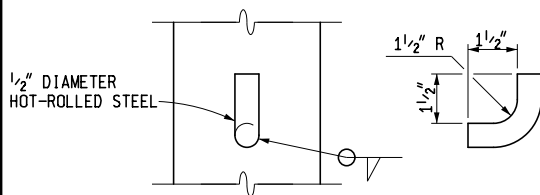
CHAIN LINK FENCE WITH WIRE ROPE

F.H.W.A. APPROVAL

9-22-2014
PLAN DATE

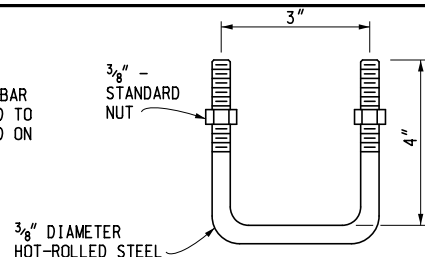
SPECIAL
DETAIL 99

SHEET
1 OF 2

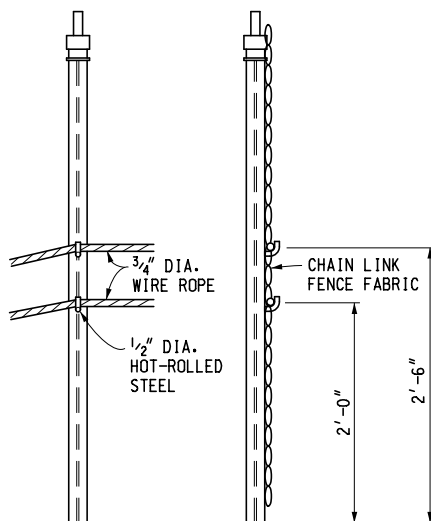


1/2" DIAMETER HOT ROLLED BAR

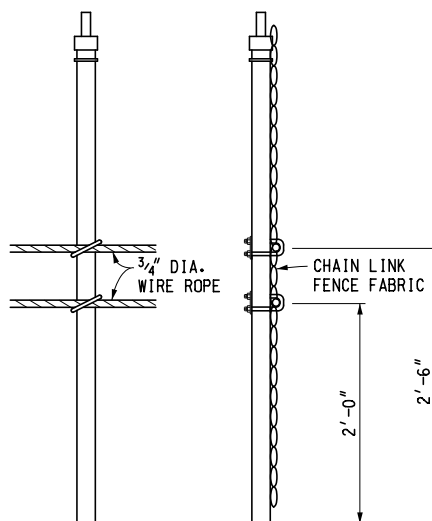
NOTE:
THE WELDED 1/2" DIAMETER HOT-ROLLED BAR
AND THE WIRE ROPE SHALL BE FASTENED TO
THE LINE POSTS THAT ARE SPECIFIED ON
STANDARD PLAN R-98-SERIES.



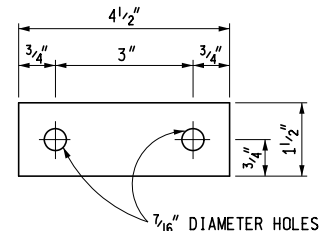
U-BOLT WITH NUTS



1st POST FROM ANCHOR



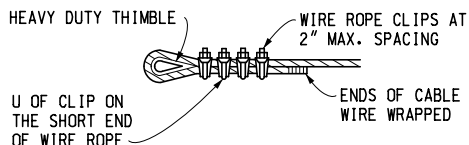
WIRE ROPE INSTALLED TO
LINE POST WITH U-BOLTS



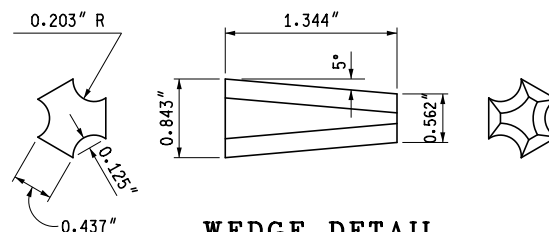
U-BOLT WASHER
1/4" THICK HOT-ROLLED STEEL



3/4" DIAMETER
WIRE ROPE (3 X 7)



WIRE ROPE LOOP ENDING



WEDGE DETAIL

NOTES:

CHAIN LINK FENCE WITH WIRE ROPE SHALL BE INSTALLED ACCORDING TO THIS PLAN AND STANDARD PLAN R-98-SERIES. THE WIRE ROPE SHALL BE ANCHORED ACCORDING TO THIS PLAN AND INSTALLED ON STANDARD FENCE POSTS FOR CHAIN LINK FENCE WITH CHAIN LINK FABRIC PLACED ON THE INSIDE OF WIRE ROPE. THE POST NEXT TO THE ANCHORAGE REQUIRES SPECIAL FABRICATION (SEE DETAIL). ALTERNATE DESIGNS MAY BE SUBMITTED TO THE ENGINEER FOR CONSIDERATION AND APPROVAL.

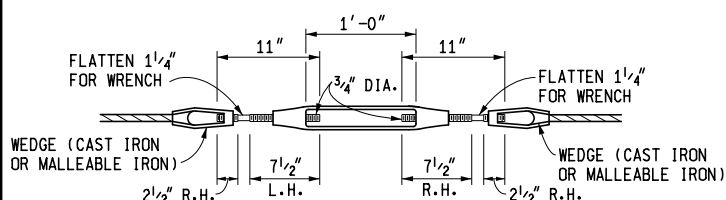
ALL POSTS, WIRE ROPES, AND FITTINGS SHALL BE GALVANIZED ACCORDING TO THE CURRENT STANDARD SPECIFICATIONS.

ALL WELDING SHALL BE DONE ACCORDING TO THE CURRENT STANDARD SPECIFICATIONS. TURNBUCKLES SHALL BE OF THE OPEN TYPE AND SHALL EACH PROVIDE A MINIMUM TAKEUP OF 1'-0".

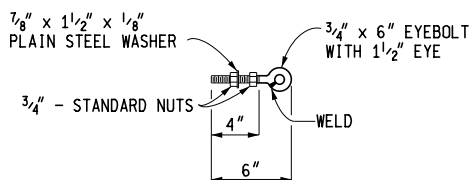
ANCHORAGE SHALL BE PROVIDED ON EACH END OF CABLES WITH ONE TURNBUCKLE FOR EACH 500' RUN OF WIRE ROPE. MAXIMUM DISTANCE BETWEEN ANCHORAGES SHALL BE 1000'. WHEN PLACING WIRE ROPE IN EXISTING FENCE, THE CONCRETE ANCHORS MAY BE PLACED 2'-0" BEYOND THE 10'-0" TYPICAL POST SPACING, LEAVING THE EXISTING POST IN PLACE.

TENSION WIRE AND WIRE ROPES SHALL BE STRETCHED TAUT.

TOP AND BOTTOM SELVAGES OF FENCE FABRIC SHALL HAVE A KNUCKLED FINISH.



TURNBUCKLE WIRE ROPE ASSEMBLY



WELDED EYE-BOLT
WITH NUTS & WASHER

MICHIGAN DEPARTMENT OF TRANSPORTATION
BUREAU OF HIGHWAY DEVELOPMENT SPECIAL DETAIL FOR

CHAIN LINK FENCE WITH WIRE ROPE

F.H.W.A. APPROVAL

9-22-2014
PLAN DATE

SPECIAL
DETAIL 99

SHEET
2 OF 2