

VICINITY MAPS

G1. A vicinity map may be required for projects involving new route locations or significant right-of-way acquisitions. The map may be drawn to any recognized scale which is at least 750 scale (1"=750'), that permits showing the entire project on one plan sheet, whenever possible. A scale smaller than 750 scale is not recommended because of its inability to display detail.

G2. The level of detail may vary as needed and might include some of the following items:

- centerline
- right-of-way limits
- topographical features such as county roads, city limits, lakes, rivers, railroads, drainage courses, etc.
- section corners, 1/4 corners, section numbers and lines, township and range, north arrow

G3. The vicinity map may be combined with the drainage map at the discretion of the Designer.

DRAINAGE MAPS

G1. The drainage map should show ditch lines using arrows to show the direction of flow, culverts, bridges, etc., for both existing and proposed conditions. Drainage structure sizes, both upstream and downstream, should also be shown. Show all county drains within the project limits.


G2. When a drainage course is a county drain, it should be indicated on the plans and drainage sheet.

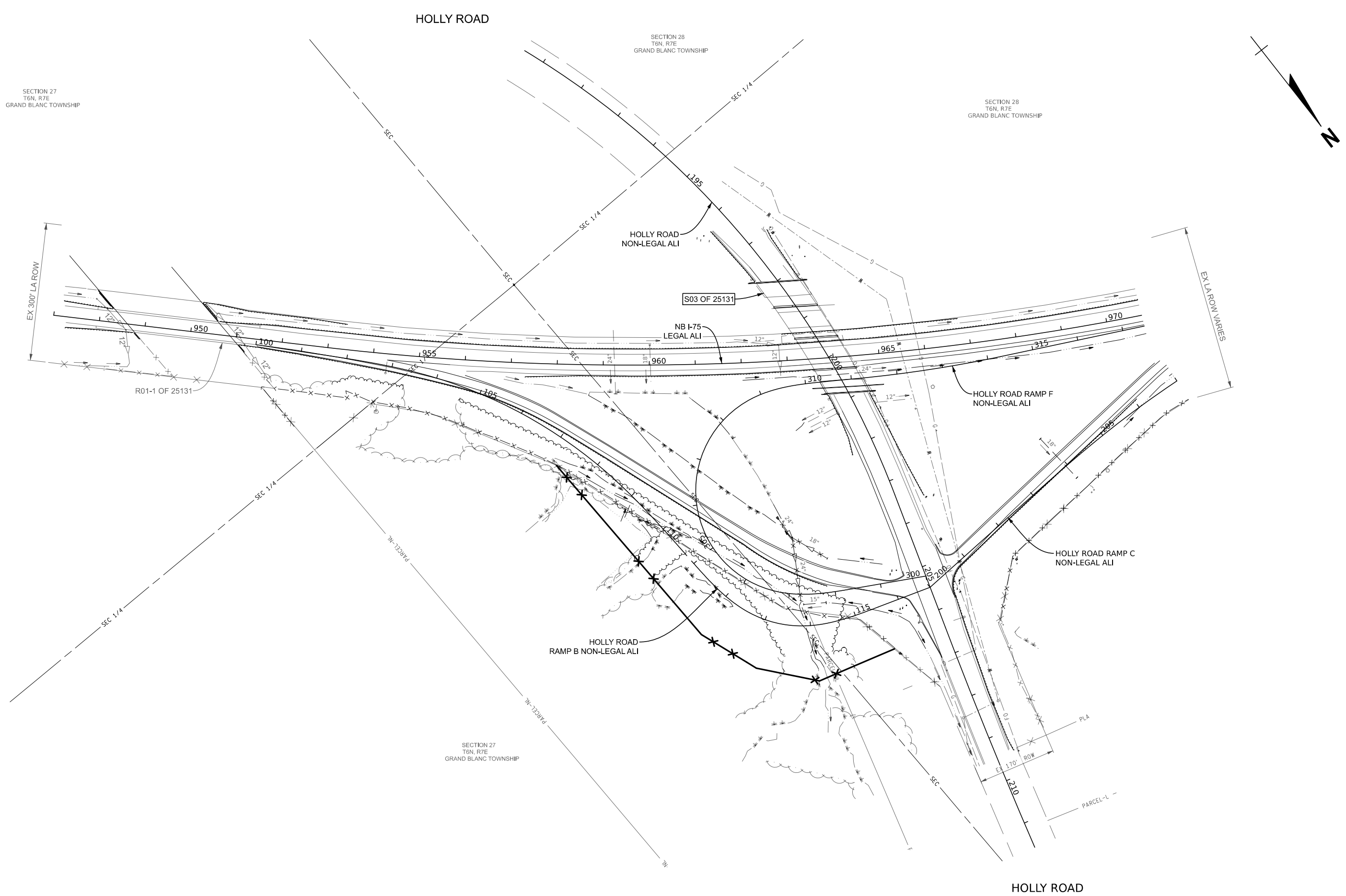
G3. The R.O.W width for the county drain must be shown on the plans.

G4. An additional drainage sheet may be required on urban projects showing existing sewers and structures. Upon completion of the drainage design, proposed sewers, structures, and their quantities may be added to this sheet.

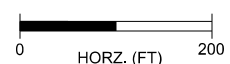
G5. The drainage map should also include the following items or information:

- The direction of flow for all existing and proposed ditches, drains, sewers and culverts
- North Arrow
- Names of streets, highways, county roads, railroads, rivers, etc.
- Outline of the proposed road
- Tabulation of drainage data for all culverts 30" or greater in diameter
- Drainage districts

FINAL ROW PLAN REVISIONS				SUBMITTAL DATE:					NO SCALE	PLAN GUIDELINES	DATE: 11/20/20	CS: 55555, (55556, 55557)	Plan Guidelines - Sample Plans		DRAWING	SHEET
NO.	DATE	AUTH	DESCRIPTION	NO.	DATE	AUTH	DESCRIPTION			SAMPLE PLANS	DESIGN UNIT:IDS	JN: 123456	VICINITY MAP		M-123	SECT 1
										FILE: Plan Guidelines - Vicinity Map.dgn	TSC: ENGINEERING SUPPORT	234567			DRNVIC	
															1	



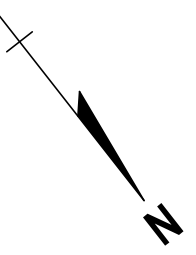
FINAL ROW PLAN REVISIONS SUBMITTAL DATE:							
NO.	DATE	AUTH	DESCRIPTION	NO.	DATE	AUTH	DESCRIPTION



PLAN GUIDELINES	DATE: 11/20/20	CS: 55555	DRAINAGE VICINITY MAP	DRAWING	SHEET			
SAMPLE PLANS	DESIGN UNIT:IDS	JN: 123456				NB I-75	M-123	SECT 1
FILE: 115832_Drn_VicMap_Ex_001.dgn	TSC: ENGINEERING SUPPORT	234567				HOLLY ROAD	DRNVIC 1	

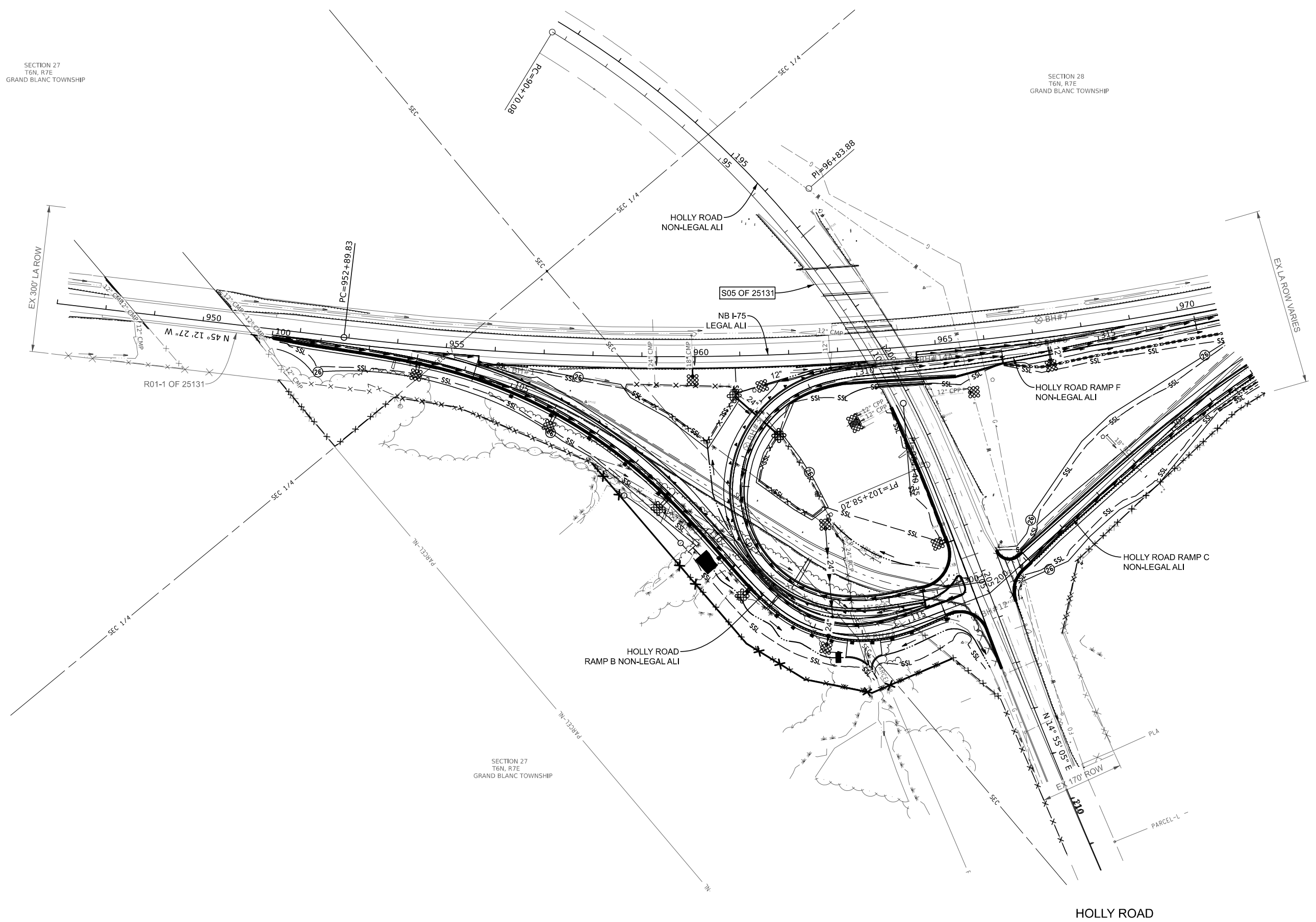
SECTION 27  
T6N, R7E  
GRAND BLANC TOWNSHIP


SECTION 28  
T6N, R7E  
GRAND BLANC TOWNSHIP



NB I-75

NB I-75  
RAMP C  
RAMP F



FINAL ROW PLAN REVISIONS								SUBMITTAL DATE:			PLAN GUIDELINES		DATE: 11/20/20		CS: 55555		DRAINAGE VICINITY MAP		DRAWING		SHEET
NO.	DATE	AUTH	DESCRIPTION	NO.	DATE	AUTH	DESCRIPTION				SAMPLE PLANS		DESIGN UNIT:IDS		JN: 123456		NB I-75		NB I-75		
											FILE: 115832_Drn_VicMap_Pr_001.dgn		TSC: ENGINEERING SUPPORT		234567		HOLLY ROAD		DRNVIC		
																			1		