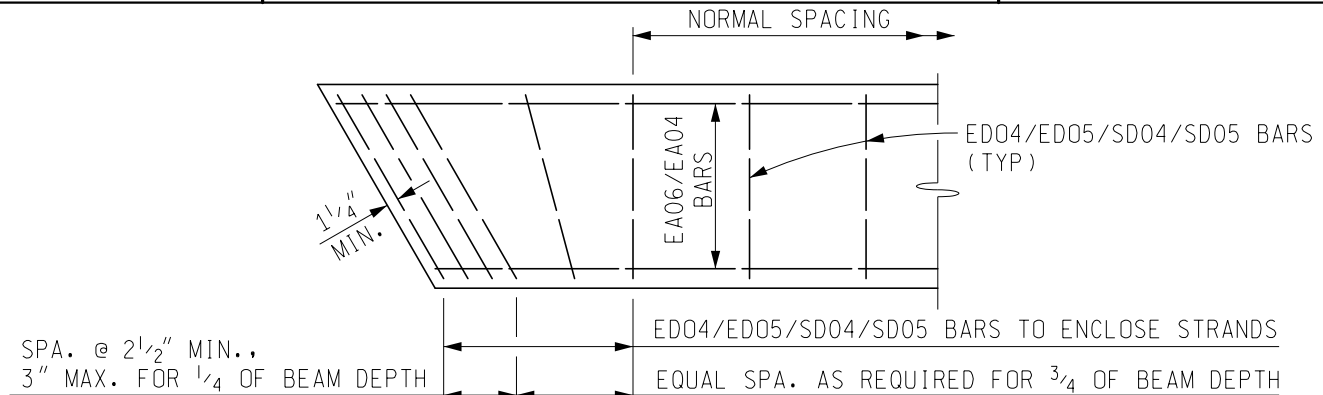


DRAWN BY: BLT
CHECKED BY: VZ
APPROVED BY: BMW

MICHIGAN DEPARTMENT OF TRANSPORTATION
BUREAU OF DEVELOPMENT

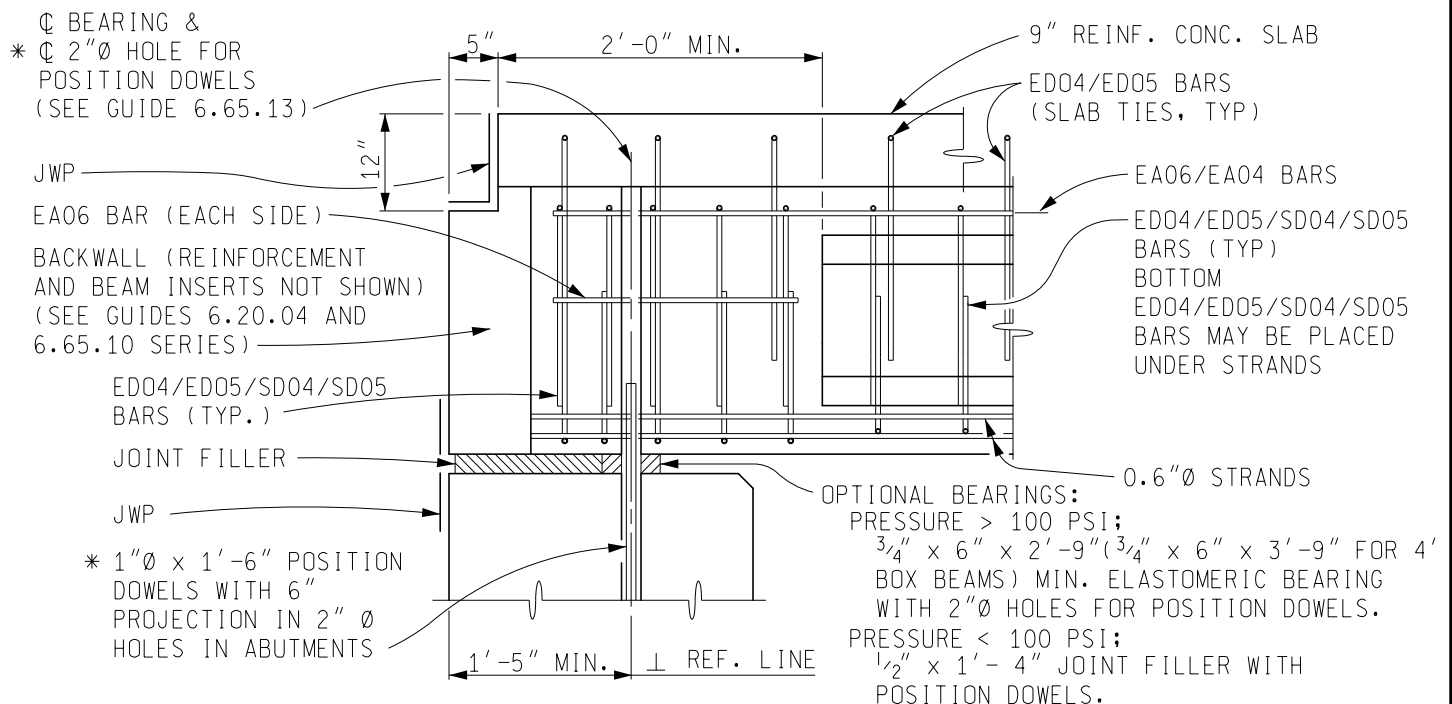
PRESTRESSED CONCRETE BOX BEAM
DETAILS - SPREAD BOX BEAMS

ISSUED: 12/27/21
SUPERSEDES: 12/17/18



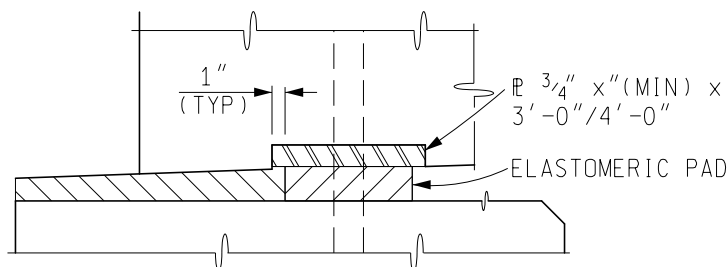
PLAN AT END

SPACE ED04/ED05/SD04/SD05 BARS TO CLEAR HOLES FOR POSITION DOWELS



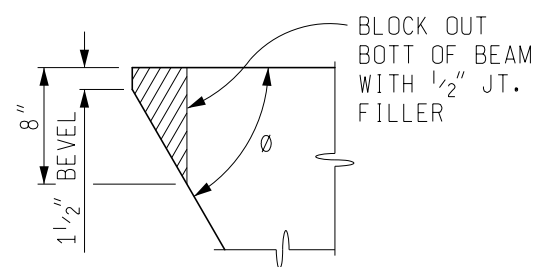
SECTION THROUGH END BLOCK AT ABUTMENT

* IF NEEDED FOR STRENGTH, FOR CONTINUOUS FOR LIVE LOAD INTEGRAL STUB ABUTMENTS, REINFORCING STEEL MAY BE USED IN 2" OR 3" Ø HOLES.



ALTERNATE BEARING DETAILS

USE $\frac{3}{4}$ " STEEL PLATE CAST IN BEAM AND TILTED AS REQUIRED WHEN CALCULATED BEVEL EXCEEDS 1%. PROVIDE $\frac{1}{4}$ " x 2" x 4" ANCHORS OR $\frac{1}{2}$ "Ø SHEAR STUD FOR $\frac{3}{4}$ " PLATE (SEE GUIDE 8.43.01A FOR DETAILS)



CORNER BLOCKING DETAIL

USE WHEN $\theta < 70^\circ$

PREPARED BY
DESIGN DIVISION

6.65.12A