

Curve Data (81-22)
 $\Delta = 0^\circ 30' 20''$ L.
 PI = Sta. 476 + 05.46

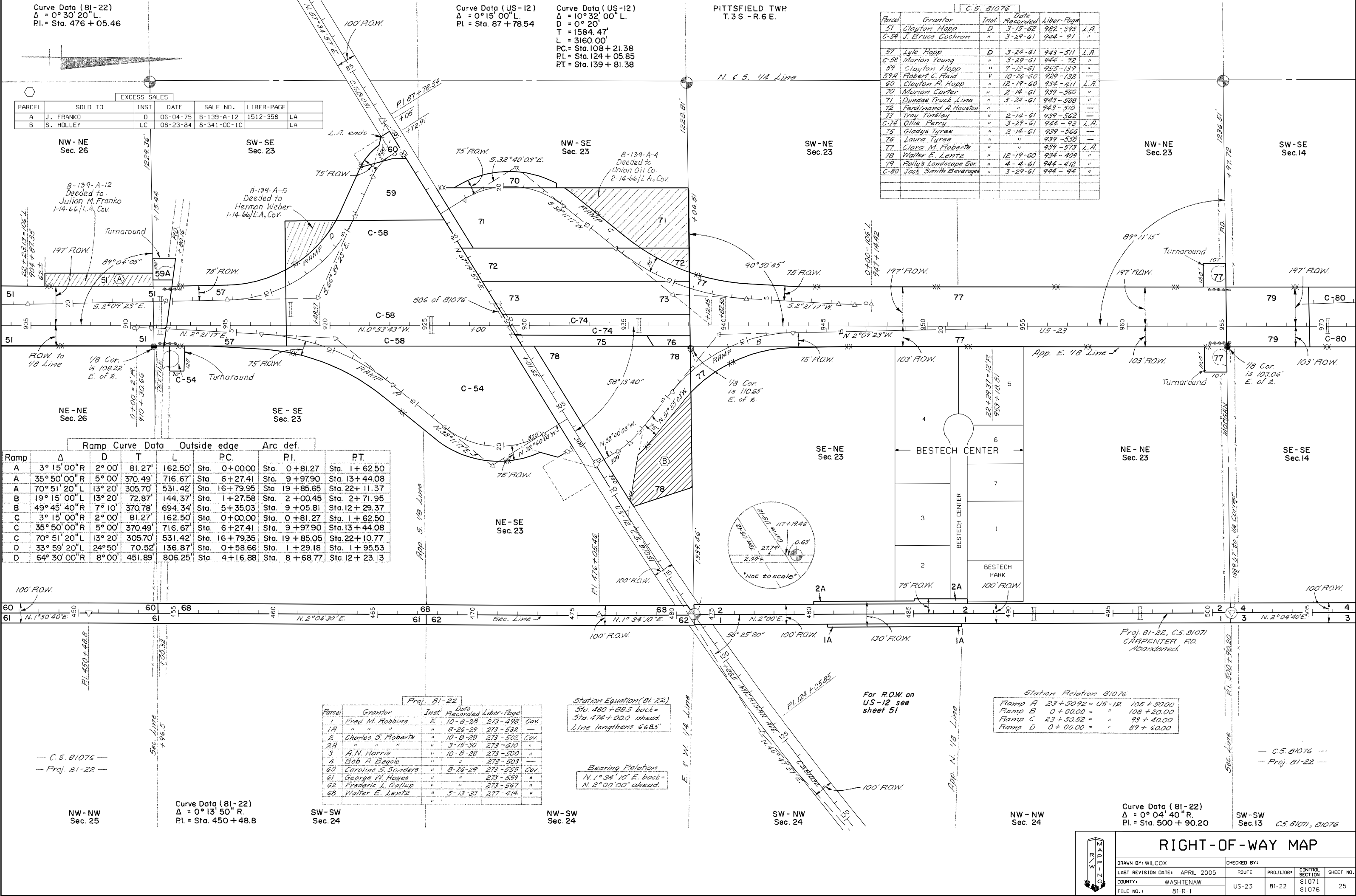
Curve Data (US-12)
 $\Delta = 0^\circ 15' 00''$ L.
 PI = Sta. 87 + 78.54

Curve Data (US-12)
 $\Delta = 10^\circ 32' 00''$ L.
 D = $0^\circ 20'$
 T = 1584.47'
 L = 3160.00'
 PC = Sta. 108 + 21.38
 PI = Sta. 124 + 05.85
 PT = Sta. 139 + 81.38

PITTSFIELD TWP.
 T.3 S. - R.6 E.

Parcel	Grantor	Inst.	Date Recorded	Liber-Page	L.A.
51	Clayton Hopp	D	3-15-62	982-393	L.A.
C-54	J. Bruce Cochran	"	3-29-61	944-91	"
57	Lyle Hopp	D	3-24-61	943-511	L.A.
C-58	Marion Young	"	3-29-61	944-92	"
59	Clayton Hopp	"	7-15-61	925-139	"
59A	Robert C. Reid	"	10-26-60	929-132	"
60	Clayton R. Hopp	"	12-19-60	934-411	L.A.
70	Marion Carter	"	2-14-61	939-560	"
71	Dundee Truck Line	"	3-24-61	943-508	"
72	Ferdinand A. Houston	"	"	943-510	"
73	Troy Tinsley	"	2-14-61	939-562	"
C-74	Ollie Perry	"	3-29-61	944-93	L.A.
75	Gladye Tyree	"	2-14-61	939-566	"
76	Laura Tyree	"	"	939-558	"
77	Clara M. Roberts	"	"	939-573	L.A.
78	Walter E. Lentz	"	12-19-60	934-409	"
79	Folly's Landscape Ser	"	4-4-61	944-412	"
C-80	Jack Smith Beverages	"	3-29-61	944-94	"

PARCEL	SOLD TO	INST.	DATE	SALE NO.	LIBER-PAGE	LA
A	J. FRANKO	D	06-04-75	8-139-A-12	1512-358	LA
B	S. HOLLEY	LC	08-23-84	8-341-OC-1C		LA



Ramp	Δ	D	T	L	PC.	PI.	PT.
A	$3^\circ 15' 00''$ R	$2^\circ 00'$	81.27'	162.50'	Sta. 0+00.00	Sta. 0+81.27	Sta. 1+62.50
A	$35^\circ 50' 00''$ R	$5^\circ 00'$	370.49'	716.67'	Sta. 6+27.41	Sta. 9+97.90	Sta. 13+44.08
A	$70^\circ 51' 20''$ L	$13^\circ 20'$	305.70'	531.42'	Sta. 16+79.95	Sta. 19+85.65	Sta. 22+11.37
B	$19^\circ 15' 00''$ L	$13^\circ 20'$	72.87'	144.37'	Sta. 1+27.58	Sta. 2+00.45	Sta. 2+71.95
B	$49^\circ 45' 40''$ R	$7^\circ 10'$	370.78'	694.34'	Sta. 5+35.03	Sta. 9+05.81	Sta. 12+29.37
C	$3^\circ 15' 00''$ R	$2^\circ 00'$	81.27'	162.50'	Sta. 0+00.00	Sta. 0+81.27	Sta. 1+62.50
C	$35^\circ 50' 00''$ R	$5^\circ 00'$	370.49'	716.67'	Sta. 6+27.41	Sta. 9+97.90	Sta. 13+44.08
C	$70^\circ 51' 20''$ L	$13^\circ 20'$	305.70'	531.42'	Sta. 16+79.95	Sta. 19+85.05	Sta. 22+10.77
D	$33^\circ 59' 20''$ L	$24^\circ 50'$	70.52'	136.87'	Sta. 0+58.66	Sta. 1+29.18	Sta. 1+95.53
D	$64^\circ 30' 00''$ R	$8^\circ 00'$	451.89'	806.25'	Sta. 4+16.88	Sta. 8+68.77	Sta. 12+23.13

Parcel	Grantor	Inst.	Date Recorded	Liber-Page	Cov.
1	Fred M. Robbins	E	10-8-28	273-498	Cov.
1A	"	"	8-26-29	273-532	"
2	Charles S. Roberts	"	10-8-28	273-502	Cov.
2A	"	"	3-15-30	273-610	"
3	A.N. Harris	"	10-8-28	273-500	"
4	Bob A. Begole	"	"	273-503	"
60	Caroline S. Sanders	"	8-26-29	273-555	Cov.
61	George W. Hayes	"	"	273-559	"
62	Frederic L. Gallup	"	"	273-567	"
68	Walter E. Lentz	"	5-13-33	297-414	"

Station Equation (81-22)
 Sta. 480 + 88.5 back =
 Sta. 474 + 00.0 ahead
 Line lengthens 66.5'

Bearing Relation
 N $1^\circ 34' 10''$ E. back =
 N $2^\circ 00' 00''$ ahead.

Ramp	Station	Station
Ramp A	23 + 50.92 = US-12	105 + 50.00
Ramp B	0 + 00.00 = "	108 + 20.00
Ramp C	23 + 50.52 = "	93 + 40.00
Ramp D	0 + 00.00 = "	89 + 60.00

Curve Data (81-22)
 $\Delta = 0^\circ 04' 40''$ R.
 PI = Sta. 500 + 90.20

RIGHT-OF-WAY MAP

DRAWN BY: WILCOX	CHECKED BY:
LAST REVISION DATE: APRIL 2005	ROUTE: US-23
COUNTY: WASHTENAW	PROJ. JOB#: 81-22
FILE NO.: 81-R-1	CONTROL SECTION: 81071, 81076
	SHEET NO.: 25