

SUPERIOR TWP
T 2 S - R 7 E

CURVE DATA
 E BD Δ
 $\Delta = 63^\circ 41' 30''$
 $D = 3^\circ 45'$
 $R = 1527.89'$
 $T = 949.02'$
 $E = 270.75'$
 $PC = 592+84.59$
 $PI = 602+33.61 =$
 $12' RT STA 100+05.93$
 $PT = 609+83.03 =$
 $12' RT STA 109+54.95$



For ROW on PLYMOUTH RD.
see sheet no. 107

For ROW on M-14, West,
see sheet no. 121

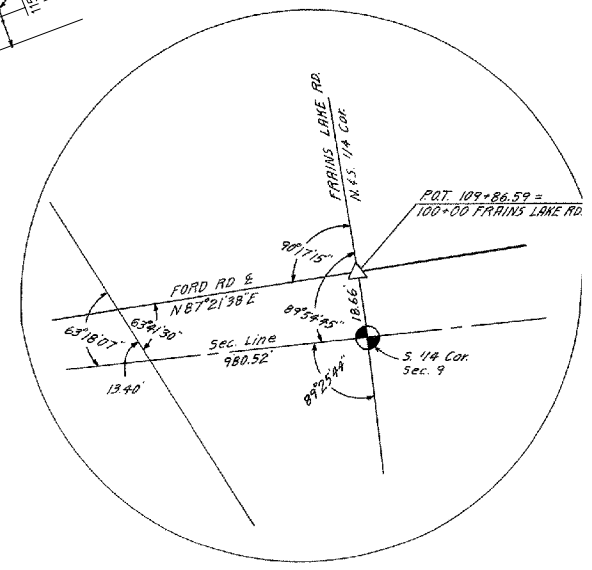
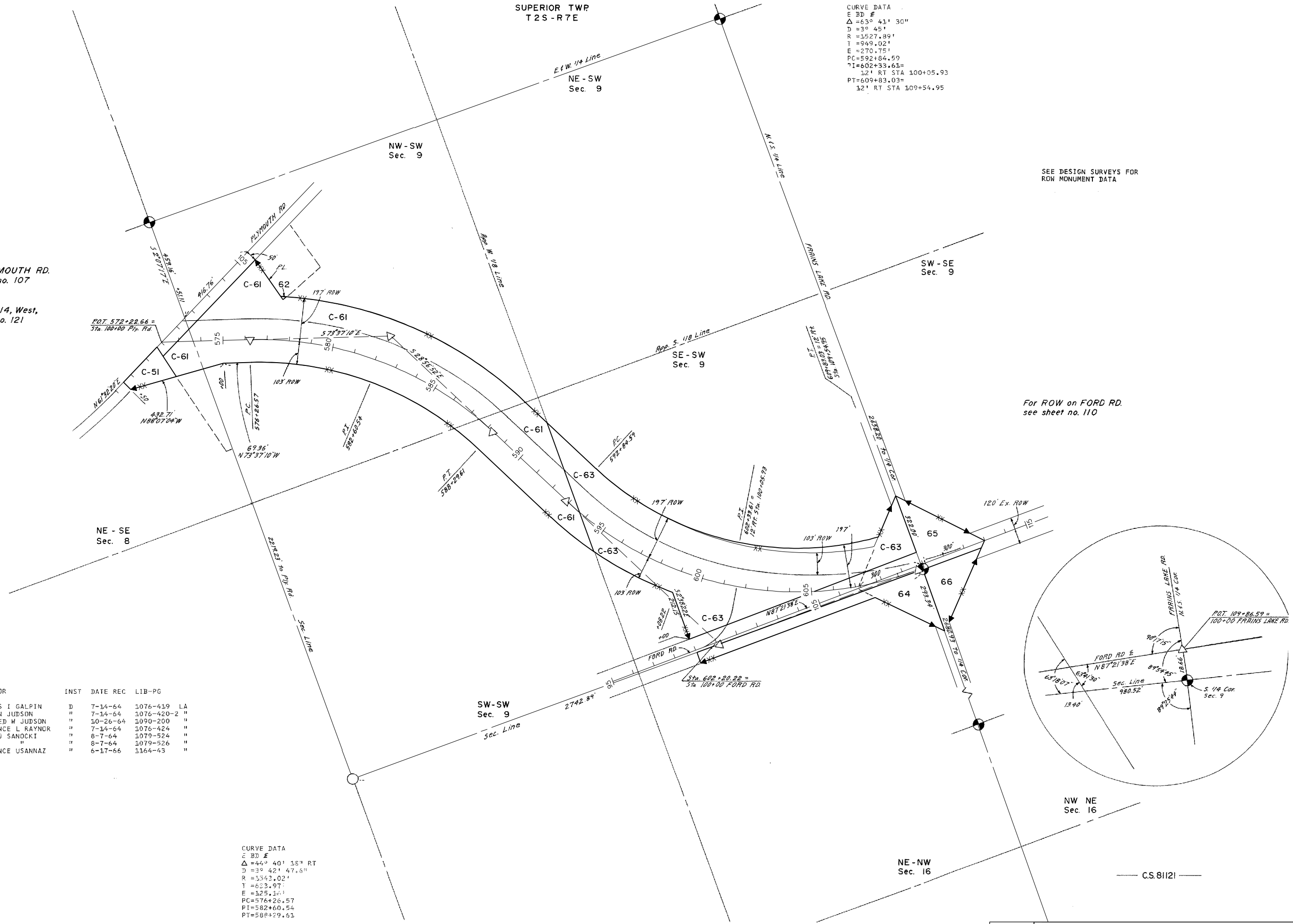
SEE DESIGN SURVEYS FOR
ROW MONUMENT DATA

CS 81121 PARCEL	GRANTOR	INST	DATE	REC	LIB-PG
C-51	GLADYS I GALPIN	D	7-14-64	1076-419	LA
C-61	NATHAN JUDSON	"	7-14-64	1076-420-2	"
62	WILFRED W JUDSON	"	10-26-64	1090-200	"
C-63	CLARENCE L RAYNDR	"	7-14-64	1076-424	"
64	JOHN J SANOCKI	"	8-7-64	1079-524	"
65	"	"	8-7-64	1079-526	"
66	LAWRENCE USANNAZ	"	6-17-66	1164-43	"

CURVE DATA
 E BD Δ
 $\Delta = 44^\circ 40' 18''$ RT
 $D = 3^\circ 42' 47.6''$
 $R = 5343.02'$
 $T = 623.97'$
 $E = 125.16'$
 $PC = 576+26.57$
 $PI = 582+60.54$
 $PT = 588+29.63$

C.S. 81121

C.S. 81121



RIGHT-OF-WAY MAP

DRAWN BY: WILCOX	CHECKED BY:	ROUTE	PROJ. JOB #	CONTROL SECTION	SHEET NO.
LAST REVISION DATE: APRIL 2005		M-15.3		81121	15.3
COUNTY: WASHTENAW					
FILE NO.: 81-R-1					