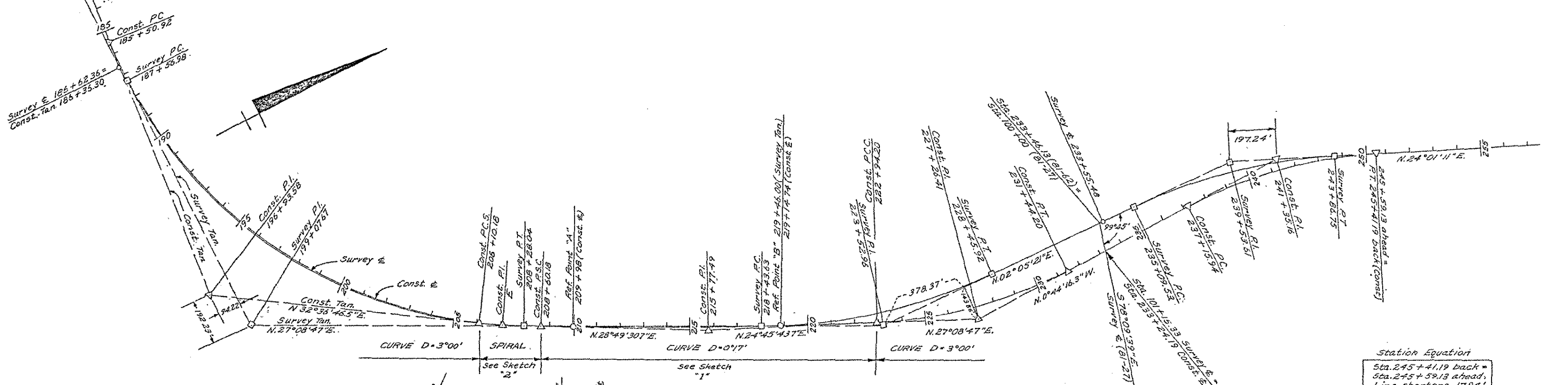


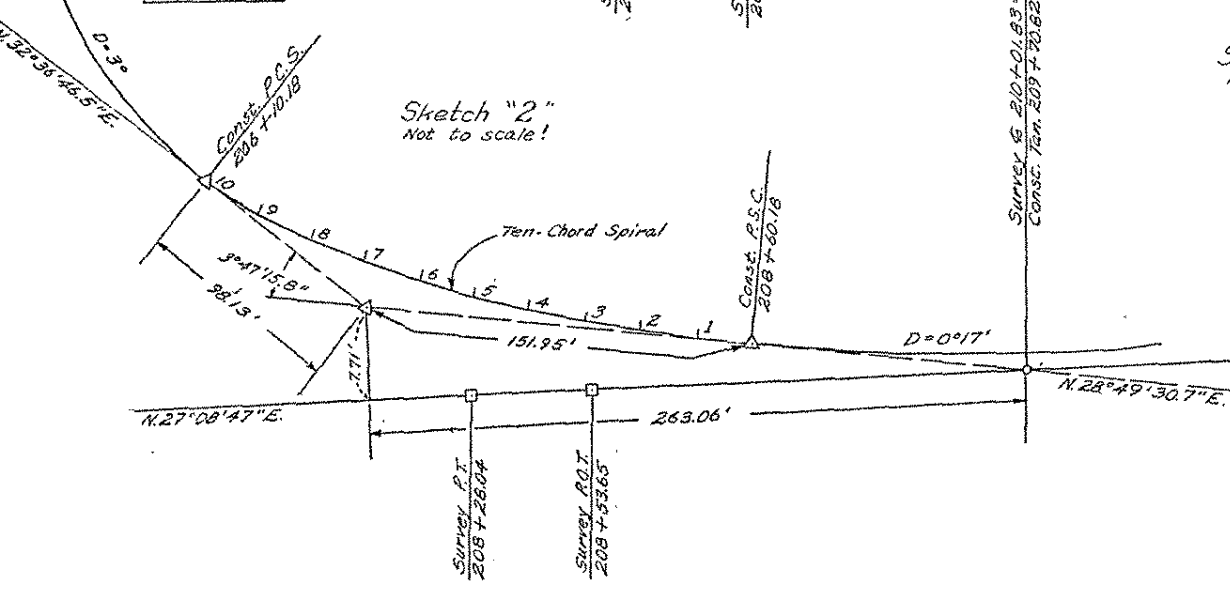
Curve Data (Survey □) Δ = 62°07'55" L D = 3°00' R = 1910.08' T = 1150.69' L = 2071.06' E = 319.82' P.C. = Sta. 187 + 56.98 P.I. = Sta. 199 + 07.67 P.T. = Sta. 208 + 28.04	Curve Data (Const. Δ) Δ = 61°46'40.5" L D = 3°00' R = 1910.08' T = 1142.66' L = 2059.26' E = 315.70' P.C. = Sta. 185 + 50.92 P.I. = Sta. 196 + 93.58 P.C.S. = Sta. 206 + 10.18	Curve Data (Const. Δ) Δ = 4°03'47" L D = 0°17' R = 20,222.06' T = 717.31' L = 1434.02' E = 12.72' P.C.C. = Sta. 208 + 60.18 P.I. = Sta. 215 + 77.49 P.C.C. = Sta. 222 + 94.20	Curve Data (Survey □) Δ = 25°03'26" L D = 2°30' R = 2292.01' T = 509.33' L = 1002.29' E = 55.91' P.C. = Sta. 218 + 43.63 P.I. = Sta. 223 + 52.96 P.T. = Sta. 228 + 45.92	Curve Data (Survey □) Δ = 25°30'00" L D = 2°30' R = 1910.08' T = 432.21' L = 850.00' E = 48.29' P.C.C. = Sta. 222 + 94.20 P.I. = Sta. 227 + 26.41 P.T. = Sta. 231 + 44.20	Curve Data (Survey □) Δ = 21°55'50" R D = 2°30' R = 2292.01' T = 444.08' L = 877.22' E = 42.62' P.C. = Sta. 235 + 09.53 P.I. = Sta. 239 + 53.61 P.T. = Sta. 243 + 86.75	Curve Data (Const. Δ) Δ = 24°45'27.3" R D = 3°00' R = 1910.08' T = 419.22' L = 825.25' E = 45.46' P.C. = Sta. 237 + 15.94 P.I. = Sta. 241 + 35.16 P.T. = Sta. 245 + 41.19
---	---	--	---	--	--	--



Station Equation
Sta. 245 + 41.19 back =
Sta. 245 + 59.13 ahead,
Line shortens 17.94'

250'
Ten Chord Spiral

Chord	Deflection
1	0°02'48"
2	0°06'38"
3	0°12'29"
4	0°19'22"
5	0°27'36"
6	0°37'12"
7	0°48'09"
8	1°00'28"
9	1°14'08"
10	1°29'10"



Sketch "1"
not to scale!

Centerline Data
and Ties for
sheet 115

C.S. 8110.5
C.S. 8107.5
C.S. 8107.3

Curve Data - Ramp "C" (Comp)

Δ = 15°41'25" R	Δ = 63°05'28" R
D = 15°05'04"	D = 8°35'19"
T = 52.29'	T = 409.17'
L = 102.22'	L = 734.59'
P.C. = Sta. 93 + 13.73	P.C.C. = Sta. 94 + 15.95'
P.I. = Sta. 93 + 66.02	P.I. = Sta. 98 + 25.42
P.T. = Sta. 94 + 15.95	P.T. = Sta. 101 + 50.54

Curve Data - Ramp "D"

Δ = 13°00" R	Δ = 63°19'06" R
D = 5°43'	D = 12°30'04"
T = 114.24'	T = 282.62'
L = 227.41'	L = 506.50'
P.C. = Sta. 0 + 00	P.C. = Sta. 3 + 91.73
P.I. = Sta. 1 + 14.24	P.I. = Sta. 6 + 74.35
P.T. = Sta. 2 + 27.41	P.T. = Sta. 8 + 98.23

Curve Data (Arc Def) - Ramp "H"

Δ = 43°49'35" R	Δ = 129°00' L
D = 11°20'27"	D = 38°20'44"
T = 203.23'	T = 313.27'
L = 386.45'	L = 336.42'
P.C. = Sta. 0 + 96.11	P.C. = Sta. 4 + 82.56
P.I. = Sta. 2 + 99.34	P.I. = Sta. 7 + 95.83
P.T. = Sta. 4 + 82.56	P.T. = Sta. 8 + 18.98



RIGHT-OF-WAY MAP

DRAWN BY: WILCOX	CHECKED BY:
LAST REVISION DATE: APRIL 2005	ROUTE: US 23
COUNTY: WASHTENAW	PROJ. JOB#: 81-27
FILE NO.: 81-R-1	CONTROL SECTION: 8105, 8107.5, 8107.3
	SHEET NO.: 115A