

LIMA-TWP
T. 2 S.-R.4E.

Parcel	Grantor	Inst.	Date Recorded	Liber-Page	Cov.
19	Albert J. Flelemer	E	2-3-38	327-602	
C-20	Alfred Lindauer	"	9-24-37	327-408	
21	Charles G. Schooley	"	2-15-40	297-544	Cov.
22	Munson L. Burkhardt	"	1-15-38	327-555	"
22A	"	D	7-29-39	331-439	"
23	Joseph Juergens	E	11-9-38	334-393	Cov.
24	Effie J. Pierce	"	1-15-38	327-550	"

* Error in description.

Easements superseded by Deeds

Parcel Proj	Degree of Merger	Parcels C.S. 81104
19	Partial	97, 98, 99, 100, C-101
C-20	"	C-102, C-103, C-104, C-105, C-107, C-108
21	"	C-114
22	Complete	115
23	Partial	C-120

Curve Data (Ramp A)
 $\Delta = 87^{\circ}07'25''$ L.
 $D = 18^{\circ}20'$
 $T = 297.21'$
 $L = 475.22'$
 $PL = \text{Sta. } 415 + 22.40$
 $PC = \text{Sta. } 412 + 25.19$ is
 $71' \text{ L. \& Equal } \epsilon$
 $PT = \text{Sta. } 417 + 00.41$
 $R = 312.52'$

Curve Data (Old US-12 Reloc.)
 $\Delta = 20^{\circ}48'00''$ L.
 $D = 3^{\circ}00'$
 $T = 350.56'$
 $L = 693.41'$
 $PL = \text{Sta. } 11 + 43.70$
 $R = 1910.08'$

Curve Data (SERVICE RD.)
 $\Delta = 31^{\circ}07'25''$ R.
 $D = 7^{\circ}10'$
 $T = 222.64'$
 $L = 434.28'$
 $PL = \text{Sta. } 420 + 15.21$
 $R = 799.476'$

Curve Data (Old US-12 Reloc.)
 $\Delta = 67^{\circ}46'53''$ R.
 $D = 8^{\circ}00'$ (Arc Def.)
 $T = 481.10'$
 $L = 847.27'$
 $PL = \text{Sta. } 21 + 50.57$
 $R = 716.20'$

Curve Data (SERVICE RD.)
 $\Delta = 34^{\circ}00'00''$ L.
 $D = 4^{\circ}00'$ (Arc Def.)
 $T = 437.93'$
 $L = 850.00'$
 $PL = \text{Sta. } 429 + 25.86$
 $R = 1432.39'$

Curve Data (Proj. 81-31)
 $\Delta = 21^{\circ}32'00''$ L.
 $D = 1^{\circ}30'00''$ L.
 $T = 726.33'$
 $L = 1435.55'$
 $PL = \text{Sta. } 1155 + 17.10$
 $R = 3819.83'$

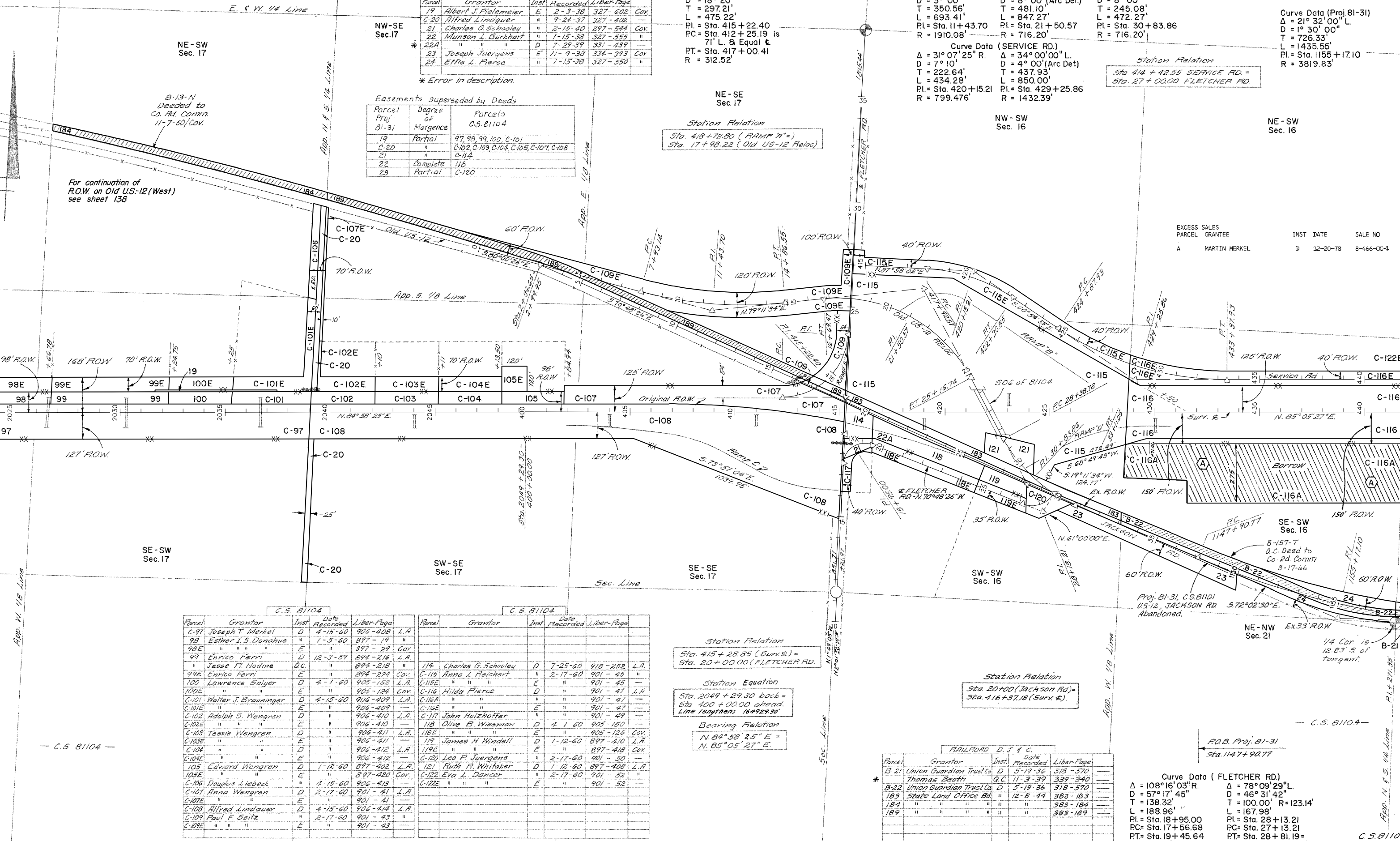
Station Relation
 Sta 414 + 42.55 SERVICE RD. =
 Sta. 27 + 00.00 FLETCHER RD.

Station Relation
 Sta. 418 + 72.80 (RAMP "A") =
 Sta. 17 + 98.22 (Old US-12 Reloc.)

NW-SW
Sec. 16

NE-SW
Sec. 16

EXCESS SALES	PARCEL	GRANTEE	INST	DATE	SALE NO
A	MARTIN MERKEL		D	12-20-78	8-466-00-1



Parcel	Grantor	Inst.	Date Recorded	Liber-Page	L.A.
C-97	Joseph T. Merkel	D	4-15-60	906-408	L.A.
98	Esther I. S. Donahue	"	1-5-60	897-19	"
98E	"	E	"	397-29	Cov.
99	Enrico Ferri	D	12-3-59	894-216	L.A.
99E	Jesse F. Nodine	Q.C.	"	894-218	"
99E	Enrico Ferri	E	"	894-224	Cov.
100	Lawrence Salzer	D	4-1-60	905-152	L.A.
100E	"	E	"	905-184	Cov.
C-101	Walter J. Brauning	D	4-15-60	906-409	L.A.
C-101E	"	E	"	906-409	"
C-102	Adolph S. Wengren	D	"	906-410	L.A.
C-102E	"	E	"	906-410	"
C-103	Tessie Wengren	D	"	906-411	L.A.
C-103E	"	E	"	906-411	"
C-104	"	D	"	906-412	L.A.
C-104E	"	E	"	906-412	"
105	Edward Wengren	D	1-12-60	897-402	L.A.
105E	"	E	"	897-420	Cov.
C-106	Douglas Liebeck	"	4-15-60	906-413	"
C-107	Anna Wengren	D	2-17-60	901-41	L.A.
C-107E	"	E	"	901-41	"
C-108	Alfred Lindauer	D	4-15-60	906-414	L.A.
C-109	Paul F. Seitz	"	2-17-60	901-43	"
C-109E	"	E	"	901-43	"

Parcel	Grantor	Inst.	Date Recorded	Liber-Page	L.A.
114	Charles G. Schooley	D	7-25-60	918-252	L.A.
C-115	Anna L. Reichert	"	2-17-60	901-45	"
C-115E	"	E	"	901-45	"
C-116	Hilda Pierce	D	"	901-47	L.A.
C-116A	"	"	"	901-47	"
C-116E	"	E	"	901-47	"
C-117	John Holzhofer	"	"	901-49	"
C-117E	"	E	"	901-49	"
C-118	Olive B. Wiseman	D	4-1-60	905-150	"
C-118E	"	E	"	905-126	Cov.
C-119	James H. Windell	D	1-12-60	897-410	L.A.
C-119E	"	E	"	897-418	Cov.
C-120	Leo P. Juergens	"	2-17-60	901-50	"
C-120E	"	E	"	897-408	L.A.
C-122	Eva L. Dancer	D	2-17-60	901-52	"
C-122E	"	E	"	901-52	"

Station Relation
 Sta. 415 + 28.85 (Surv. E) =
 Sta. 20 + 00.00 (FLETCHER RD.)

Station Equation
 Sta. 2049 + 29.30 back =
 Sta. 400 + 00.00 ahead.
 Line lengthens 16429.30'

Bearing Relation
 $N. 84^{\circ}58'25'' E =$
 $N. 85^{\circ}05'27'' E.$

Station Relation
 Sta. 20+00 (Jackson Rd) =
 Sta. 416 + 37.18 (Surv. E).

Parcel	Grantor	Inst.	Date Recorded	Liber-Page
B-21	Union Guardian Trust Co.	D	5-19-36	318-570
	Thomas Beath	Q.C.	11-3-39	339-340
B-22	Union Guardian Trust Co.	D	5-19-36	318-570
183	State Land Office Bd.	"	12-8-44	383-183
184	"	"	"	383-184
189	"	"	"	383-189

* Parcels B-22, 183, 184 & 189 covered by this "Q.C."

Curve Data (FLETCHER RD.)
 $\Delta = 108^{\circ}16'03''$ R.
 $D = 57^{\circ}17'45''$
 $T = 138.32'$
 $L = 188.96'$
 $PL = \text{Sta. } 18 + 95.00$
 $PC = \text{Sta. } 17 + 56.68$
 $PT = \text{Sta. } 19 + 45.64$
 $R = 100.0'$

Curve Data (Old US-12)
 $\Delta = 78^{\circ}09'29''$ L.
 $D = 46^{\circ}31'42''$
 $T = 100.00'$ R=123.14'
 $L = 167.98'$
 $PL = \text{Sta. } 28 + 13.21$
 $PC = \text{Sta. } 27 + 13.21$
 $PT = \text{Sta. } 28 + 81.19$
 $Sta. 32 + 00.00 (Old US-12)$

RIGHT-OF-WAY MAP

DRAWN BY: WILCOX	CHECKED BY:	ROUTE	PROJ. JOB#	CONTROL SECTION	SHEET NO.
LAST REVISION DATE: APRIL 2005		1-94	81-31	81101	66
COUNTY: WASHTENAW				81104	
FILE NO. 1	81-R-1				