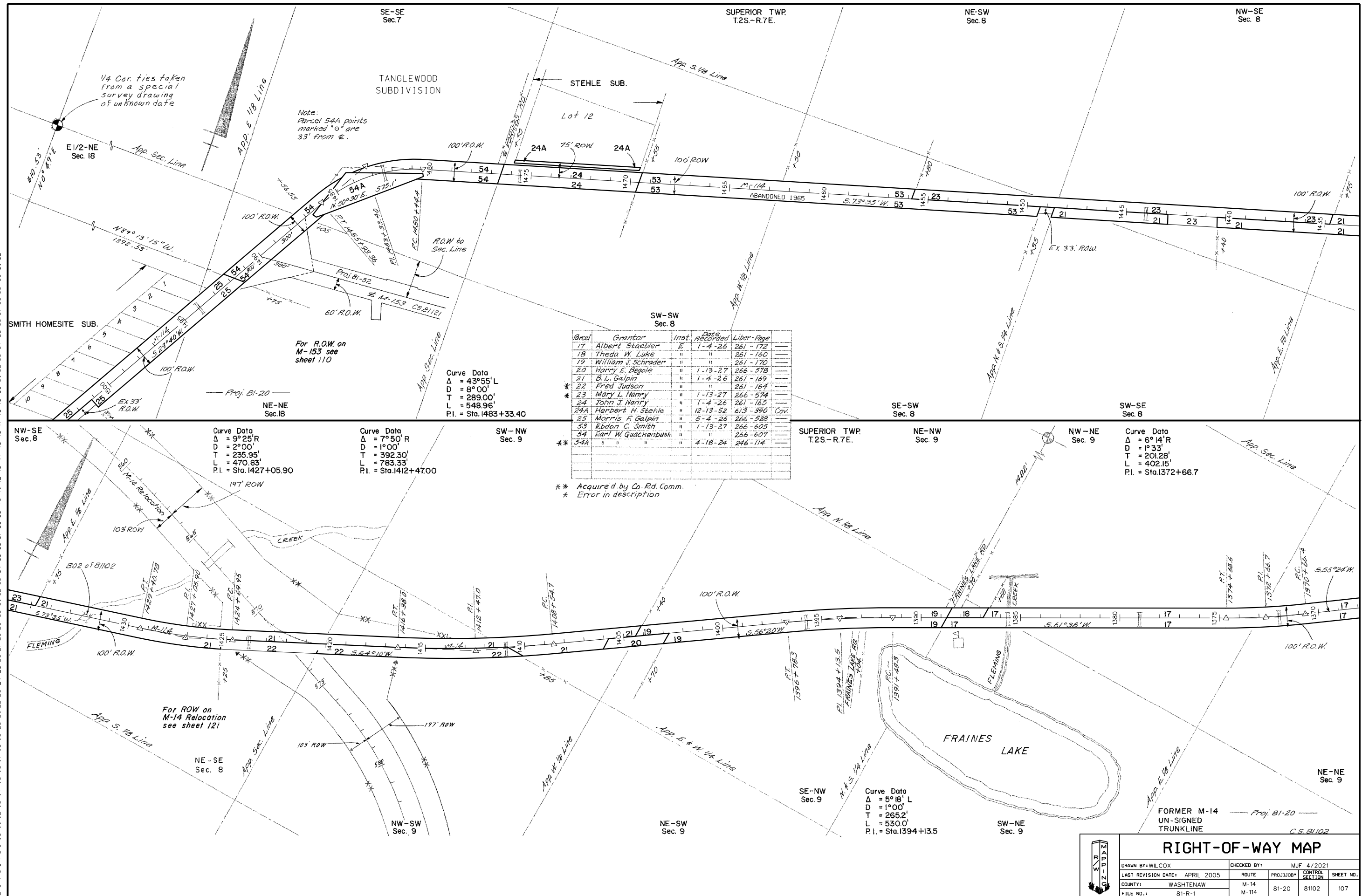


1 2 3 4 5 6 7 8 9 10 11 12 13 14 15 16 17 18 19 20 21 22 23 24 25 26 27 28 29 30 31 32 33 34 35 36 37 38 39 40 41 42 43 44 45 46 47 48 49 50 51 52 53 54 55 56 57 58 59 60 61 62



Parcel	Grantor	Inst.	Date	Accorded	Liber-Page
17	Albert Staebler	E	1-4-26		261-172
18	Theda W. Luke	"	"		261-160
19	William J. Schrader	"	"		261-170
20	Harry E. Begole	"	1-13-27		266-378
21	B. L. Galpin	"	1-4-26		261-169
22	Fred Judson	"	"		261-164
23	Mary L. Narry	"	1-13-27		266-574
24	John J. Narry	"	1-4-26		261-165
24A	Herbert H. Stehle	"	12-13-52		613-390
25	Morris F. Galpin	"	5-4-26		266-528
53	Ebdon C. Smith	"	1-13-27		266-605
54	Earl W. Quackenbush	"	"		266-607
54A	"	"	4-18-24		246-114

RIGHT-OF-WAY MAP			
DRAWN BY: WILCOX	CHECKED BY: MJF	4/2021	
LAST REVISION DATE: APRIL 2005	ROUTE: M-14	PROJ. JOB#: 81-20	CONTROL SHEET NO.: 107
COUNTY: WASHTENAW	FILE NO.: 81-R-1	M-114	81102