

Ramp	Δ	D	T	L	P.C.	P.I.	P.T.
A	3° 15' 00" R	2° 00'	81.27'	162.50'	Sta. 0 + 00	Sta. 0 + 81.27	Sta. 1 + 62.50
A	15° 00' 00" R	5° 00'	150.86'	300.00'	Sta. 6 + 27.41	Sta. 7 + 78.27	Sta. 9 + 27.41
A	19° 19' 10" L	7° 00'	139.32'	278.64'	Sta. 12 + 37.80	Sta. 13 + 77.12	Sta. 15 + 13.78
A	19° 55' 50" L	7° 00'	143.81'	287.62'	Sta. 18 + 83.51	Sta. 20 + 27.32	Sta. 21 + 68.23
A	69° 00' 00" L	17° 45' 14.48"	221.80'	388.64'	Sta. 25 + 84.41	Sta. 28 + 06.21	Sta. 29 + 73.05
D	3° 15' 00" R	2° 00'	81.27'	162.50'	Sta. 0 + 00	Sta. 0 + 81.27	Sta. 1 + 62.50
D	15° 00' 00" L	5° 00'	150.86'	300.00'	Sta. 6 + 27.41	Sta. 7 + 78.27	Sta. 9 + 27.41
D	39° 15' 00" R	13° 00'	157.16'	304.33'	Sta. 14 + 58.75	Sta. 16 + 15.91	Sta. 17 + 60.68

PARCEL	SOLD TO	INST	DATE	SALE NO.	LIBER-PAGE	COV.
A	FRANK C. TELLES	D	1-17-67	8-168-N-1		COV.
B	EMIL G. SCHULTZ	D	3-27-67	8-167-N-1	5144-976	COV.
C	E. WATERSTRADT	D	07-02-75	8-372-N-1	1515-583	
D	B. MORROW	D	06-10-75	8-369-N-1	1512-884	
E	J. BRUCKNER	D	11-03-75	8-367-N-1	1529-542	
F	H. YOUNG	D	08-26-77	8-392-N-1&2	1612-7	
G	MILAN COMMERCIAL, LLC	OC	10-22-02	8-959-A-3	4447-997	LA

1. REPLACEMENT DEED FOR SALE DATED 3-27-67

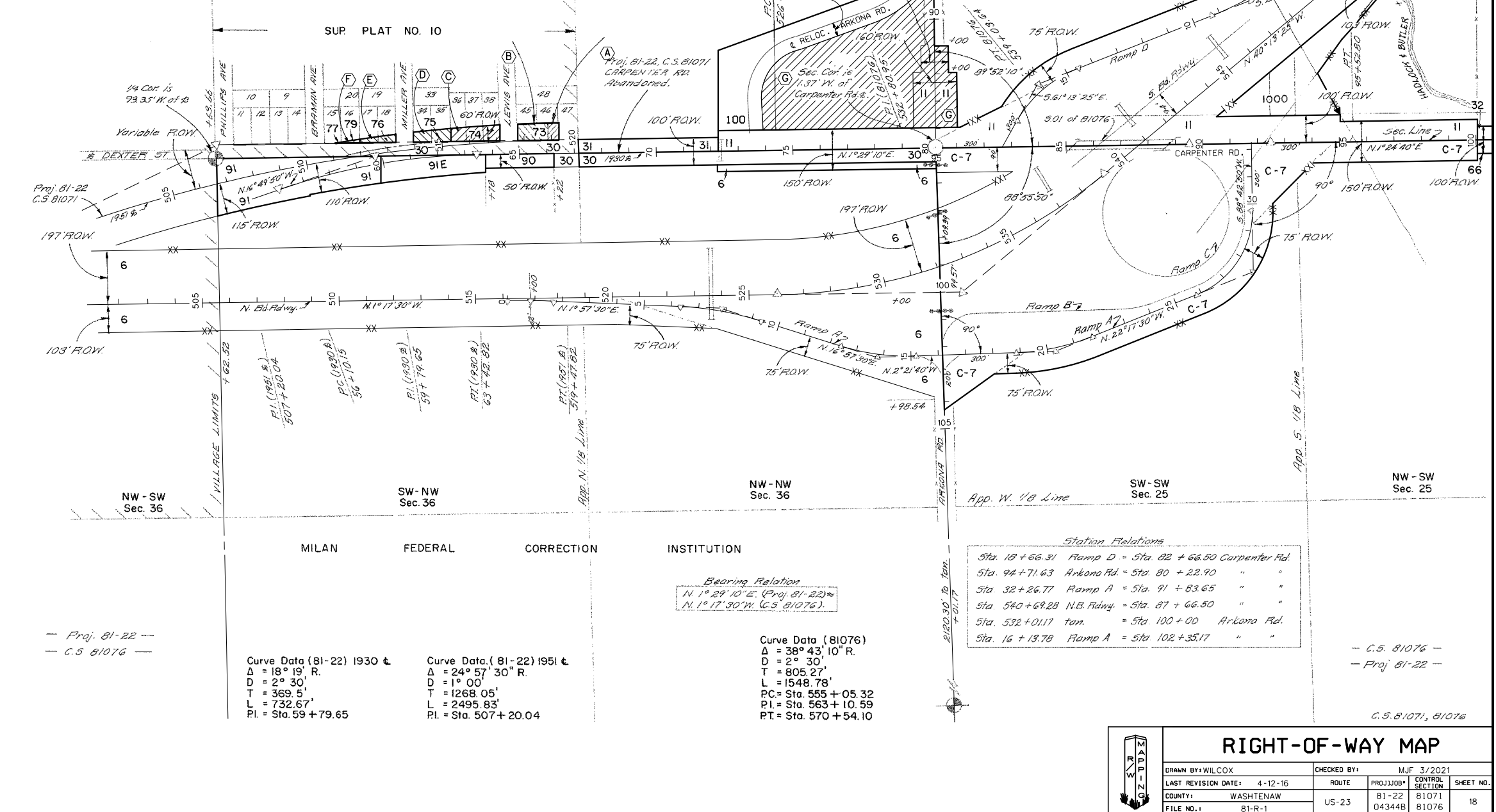
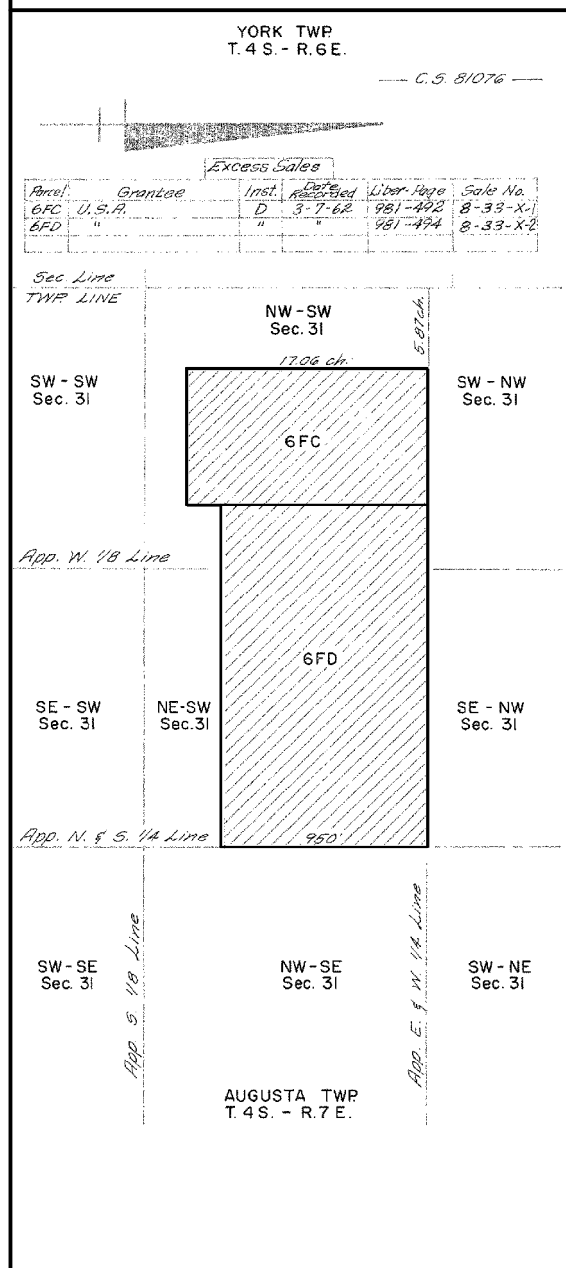
Parcel	Grantor	Inst	Date Recorded	Lib. Page	Cov.
30	Adaline Wilcox	E	8-26-29	273-536	COV.
31	Charles W. Greshover	"	"	273-536	"
32	William Hoeft	"	"	273-538	"
66	William Jorgensen	"	3-15-30	273-603	"
73	Edna R. Mead	D	2-9-49	505-175	"
74	Fred R. Seger	"	3-22-49	507-480	"
75	C. & S. Sales Service	"	2-9-49	505-177	"
76	John E. Bruckner	D	2-9-49	505-173	"
77	Les G. Bordine	"	7-20-49	516-298	"
78	"	"	"	516-300	"
79	Milton E. Goble	"	"	516-302	"
90	Veterans Memorial Assoc	E	10-18-49	523-500	COV.
91	Harry S. Dicken	D	2-19-49	505-616	L.A.
91E	"	E	"	505-620	COV.

* Error in description.

Parcel	Grantor	Inst	Date Recorded	Lib. Page	Cov.
6	U.S.A.	E	10-12-61	966-401	L.A.
6FC	Catherine M. Murray	D	2-13-62	979-530	"
6FD	John A. Gosner	"	1-11-62	976-279	"
67	William Jorgensen	"	3-29-61	944-86	L.A.
11	Charles Greshover, Jr.	D	2-14-61	939-570	L.A.
11CC	"	E	2-16-61	940-158	"
12	Theodore Hoeft	D	"	940-162	L.A.
12B	"	"	"	940-164	"
1000	John Greshover	"	7-25-89	1804-294	L.A.

* Error in description.

PARCEL	GRANTOR	INST	DATE RECORDED	LIBER-PAGE
100	V. JOHNSON	D	04-08-76	1544-155



Station Relations

Sta. 18 + 66.31	Ramp D =	Sta. 82 + 66.50	Carpenter Rd.
Sta. 94 + 71.63	Arkona Rd. =	Sta. 80 + 22.90	"
Sta. 32 + 26.77	Ramp A =	Sta. 91 + 83.65	"
Sta. 540 + 69.28	N.B. Rdwy. =	Sta. 87 + 66.50	"
Sta. 532 + 01.17	tan. =	Sta. 100 + 00	Arkona Rd.
Sta. 16 + 13.78	Ramp A =	Sta. 102 + 35.17	"

Bearing Relation

N. 1° 29' 10" E. (Proj. 81-22)
N. 1° 17' 30" W. (C.S. 81076)

Curve Data (81-22) 1930 &
 Δ = 18° 19' R.
 D = 2° 30'
 T = 369.5'
 L = 732.67'
 P.I. = Sta. 59 + 79.65

Curve Data (81-22) 1951 &
 Δ = 24° 57' 30" R.
 D = 1° 00'
 T = 1268.05'
 L = 2495.83'
 P.I. = Sta. 507 + 20.04

Curve Data (81076)
 Δ = 38° 43' 10" R.
 D = 2° 30'
 T = 805.27'
 L = 1548.78'
 P.C. = Sta. 555 + 05.32
 P.I. = Sta. 563 + 10.59
 P.T. = Sta. 570 + 54.10

C.S. 81076, 81076

RIGHT-OF-WAY MAP

DRAWN BY: WILCOX	CHECKED BY: MJF	3/2021
LAST REVISION DATE: 4-12-16	ROUTE:	PROJ./JOB# CONTROL SHEET NO.
COUNTY: WASHTENAW	US-23	81-22 81071 81076 18
FILE NO.: 81-R-1		

1 2 3 4 5 6 7 8 9 10 11 12 13 14 15 16 17 18 19 20 21 22 23 24 25 26 27 28 29 30 31 32 33 34 35 36 37 38 39 40 41 42 43 44 45 46 47 48 49 50 51 52 53 54 55 56 57 58 59 60 61 62