

Curve Data
 $\Delta = 3^\circ 34' R.$
 $D = 0^\circ 53'$
 $T = 201.99'$
 $L = 403.77'$
 $PI = Sta. 1578 + 16.8$

City of ANN ARBOR

Proj. 81-20

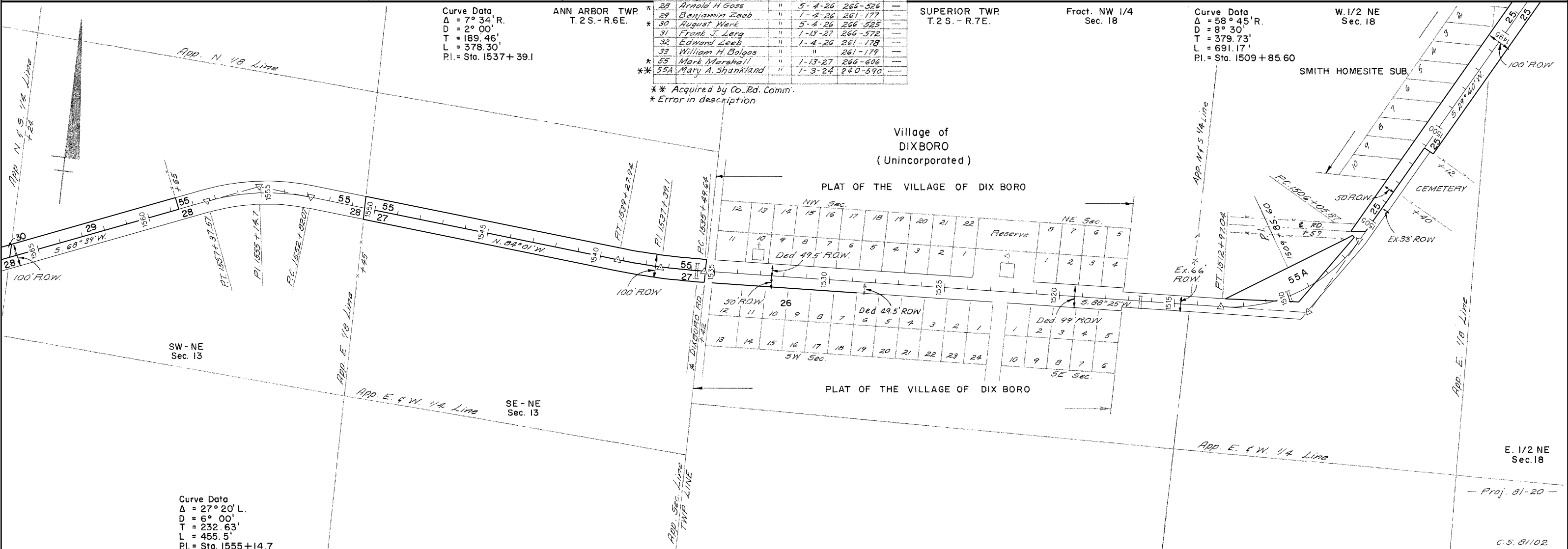
For ROW on US-23 see sheet 31

Parcel	Grantor	Inst.	Date Recorded	Liber-Page
25	Morris F Galpin	E	5-4-26	266-528
26	Emma Judson	"	"	266-529
27	Mary J. Mattison	"	1-4-26	261-174
28	Arnold H Goss	"	5-4-26	265-526
29	Benjamin Zeeb	"	1-4-26	261-177
30	August Werk	"	5-4-26	266-525
31	Frank J. Lerg	"	1-13-27	266-572
32	Edward Zeeb	"	1-4-26	261-178
33	William H. Bolgos	"	"	261-179
55	Mark Marshall	"	1-13-27	266-606
** 55A	Mary A. Shankland	"	1-3-24	270-590

** Acquired by Co. Rd. Comm.
 * Error in description

Curve Data
 $\Delta = 7^\circ 34' R.$
 $D = 2^\circ 00'$
 $T = 189.46'$
 $L = 378.30'$
 $PI = Sta. 1537 + 39.1$

Curve Data
 $\Delta = 58^\circ 45' R.$
 $D = 8^\circ 30'$
 $T = 379.73'$
 $L = 691.17'$
 $PI = Sta. 1509 + 85.60$



Curve Data
 $\Delta = 27^\circ 20' L.$
 $D = 6^\circ 00'$
 $T = 232.63'$
 $L = 455.5'$
 $PI = Sta. 1555 + 14.7$

RIGHT-OF-WAY MAP

DRAWN BY: WILCOX	CHECKED BY:
LAST REVISION DATE: APRIL 2005	ROUTE: M-114
COUNTY: WASHTENAW	PROJ. JOB: 81-20
FILE NO.: 81-R-1	CONTROL SECTION: 81102
	SHEET NO.: 106

C.S. 81102