

**Station Relation**  
 Sta 1805 + 42.37 (E. Bd. Rdwy.)  
 is 47' Right of P.T.  
 Sta 1801 + 39.96 (Surv. E.)

**Curve Data E. Bd. Rd.**  
 $\Delta = 59^\circ 08' 45''$  L.  
 $D = 2^\circ 32'$   
 $T = 1283.50'$   
 $L = 2334.70'$   
 $PI = Sta. 1773 + 89.85$   
 $R = 2261.86'$

**Curve Data Surv. E.**  
 $\Delta = 35^\circ 29' 45''$  L.  
 $D = 1^\circ 14' 23''$   
 $T = 1479.25'$   
 $L = 2863.21'$   
 $PI = Sta. 1787 + 56.00$   
 $R = 4621.75'$

Parcel	Grantor	Inst.	Date Recorded	Liber-Page	Parcel	Grantor	Inst.	Date Recorded	Liber-Page
22	Oscar Kalmbach	D	4-1-60	905-146	C-34	Wilson B. West	D	4-15-60	906-386 L.A.
22E	"	E	"	"	C-34E	"	E	"	906-386
	"	"	10-18-60	928-101					
24	Carl Heydlauff	D	4-22-60	407-94 L.A.	35	Shirley E. Sibbald	D	7-25-60	918-238
25	Grace L. Fahrner	"	11-29-61	972-120	36	Paul Bollinger	Q.C.	"	918-219
26	Roy Kalmbach	"	7-12-60	916-448 L.A.	36A	Roy Senecal	D	"	918-244 L.A.
27	Emerson H. Lesser	"	7-25-60	918-228	36AE	Roy Senecal	Q.C.	"	918-220
28	David Lixey	"	"	918-226	C-36A	Roy Senecal	D	10-12-60	927-473 L.A.
29A	Frederick H. Schumm	"	6-25-60	918-256 L.A.	C-36E	"	E	"	927-473
C-29B	Harrison West	"	4-15-60	906-370	C-37	Armel Minix	D	4-15-60	906-389 L.A.
30	Philip McKenna	"	7-25-60	918-232	C-38	Leon X. Ludwig	"	4-28-64	1066-609
30	Virgil W. Boyd	Q.C.	"	918-216	C-38E	"	E	"	1066-609
31	Frederick H. Schumm	D	"	918-246	41	George T. Hatley	"	1-19-60	978-238 Cov.
31A	Bert F. Foster	"	"	918-248	42	Chrysler Corp.	Q.C.	7-25-60	918-222
"	Frederick H. Schumm	Q.C.	"	918-214	C-49	Chrysler Corp.	D	2-28-61	941-167 L.A.
32	Roy Kalmbach	D	"	918-242	49E	"	E	8-18-61	959-29
C-33	Harrison West	"	4-15-60	906-384					
C-33A	"	"	"	906-385					

**Station Relation**  
 Sta. 12 + 79.91 (Ramp B) =  
 Sta. 7 + 47.92 (PIERCE RD.)

**Curve Data (Ramp B)**  
 $\Delta = 34^\circ 38' 13''$  L.  
 $D = 3^\circ 00'$   
 $T = 595.93'$   
 $L = 1154.56'$   
 $PI = Sta. 5 + 95.93$   
 $R = 1909.86'$

**Station Relation**  
 Sta. 7 + 58.92 (PIERCE RD.) =  
 Sta. 205 + 77.11 (Old US-12)

**Curve Data (PIERCE RD.)**  
 $\Delta = 39^\circ 59' 28''$  L.  
 $D = 7^\circ 00'$   
 $T = 297.84'$   
 $L = 571.30'$   
 $PI = Sta. 3 + 97.84$   
 $R = 818.51'$

**Station Relation**  
 Sta. 0 + 00 (Ramp C) =  
 Sta. 205 + 85.11 (Old US-12)

**Curve Data (Ramp C)**  
 $\Delta = 48^\circ 27' 13''$  L.  
 $D = 8^\circ 15'$   
 $T = 312.51'$   
 $L = 587.32'$   
 $PI = Sta. 3 + 87.00$   
 $R = 694.49'$

**Station Equation**  
 Sta. 212 + 00.23 back =  
 Sta. 211 + 80.56 ahead.  
 Line lengthens 19.67'

\*2 Parcel 26 L.A. surrenders access rights to Parcel 26.  
 \*3 Parcel 32 AN surrenders access rights to Parcel 32.

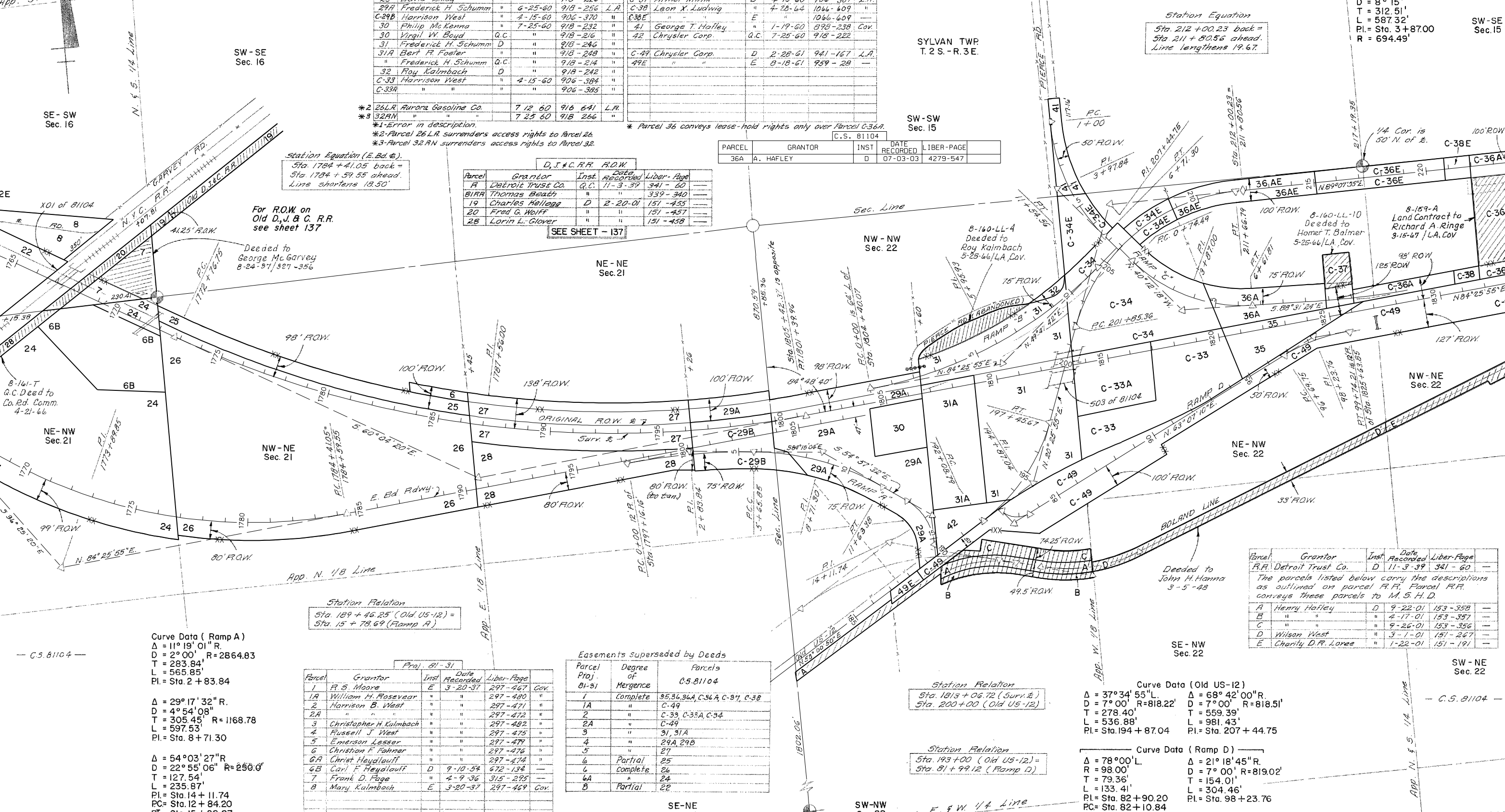
\* Parcel 36 conveys lease-hold rights only over Parcel C-36A.

D, J. & C. R. R. R.O.W.

Parcel	Grantor	Inst.	Date Recorded	Liber-Page
A	Detroit Trust Co.	Q.C.	11-3-39	341-60
B1A	Thomas Beath	"	"	339-340
19	Charles Halliag	D	2-20-01	151-455
20	Fred G. Wolff	"	"	151-457
28	Lorin L. Glover	"	"	151-458

SEE SHEET - 137

PARCEL	GRANTOR	INST.	DATE RECORDED	LIBER-PAGE
36A	A. HAFLEY	D	07-03-03	4279-547



**Curve Data (Ramp A)**  
 $\Delta = 11^\circ 19' 01''$  R.  
 $D = 2^\circ 00'$  R = 2864.83  
 $T = 283.84'$   
 $L = 565.85'$   
 $PI = Sta. 2 + 83.84$

$\Delta = 29^\circ 17' 32''$  R.  
 $D = 4^\circ 54' 08''$   
 $T = 305.45'$  R = 1168.78  
 $L = 597.53'$   
 $PI = Sta. 8 + 71.30$

$\Delta = 54^\circ 03' 27''$  R.  
 $D = 22^\circ 55' 06''$  R = 250.0'  
 $T = 127.54'$   
 $L = 235.87'$   
 $PI = Sta. 14 + 11.74$   
 $PC = Sta. 12 + 84.20$   
 $PT = Sta. 15 + 20.07$

Proj. 81-31

Parcel	Grantor	Inst.	Date Recorded	Liber-Page
1	R. S. Moore	E	3-20-37	297-467 Gov.
1A	William H. Rosevear	"	"	297-480
2	Harrison B. West	"	"	297-471
2A	"	"	"	297-472
3	Christopher H. Kalmbach	"	"	297-482
4	Russell J. West	"	"	297-475
5	Emerson Lesser	"	"	297-479
6	Christian F. Fahrner	"	"	297-476
6A	Christ Heydlauff	"	"	297-474
6B	Carl F. Heydlauff	D	9-10-54	672-134
7	Frank D. Page	"	4-9-36	315-295
8	Mary Kalmbach	E	3-20-37	297-469 Gov.

**Easements Superseded by Deeds**

Parcel Proj.	Degree of Merger	Parcels C.S. 81104
1	Complete	95, 36, 36A, C-36A, C-37, C-38
1A	"	C-49
2	"	C-33, C-33A, C-34
2A	"	C-49
3	"	31, 31A
4	"	29A, 29B
5	"	27
6	Partial	25
6	Complete	26
6A	"	24
8	Partial	22

The parcels listed below carry the descriptions as outlined on parcel R.F. Parcel R.R. conveys these parcels to M. S. H. D.

Parcel	Grantor	Inst.	Date Recorded	Liber-Page
R.F. Detroit Trust Co.	D	11-3-39	341-60	
A	Henry Hatley	D	9-22-01	153-358
B	"	"	4-17-01	153-357
C	"	"	9-26-01	153-356
D	Wilson West	"	3-1-01	151-267
E	Charity D. Loree	"	1-22-01	151-191

**Station Relation**  
 Sta. 1813 + 06.72 (Surv. E.)  
 Sta. 200 + 00 (Old US-12)

**Curve Data (Old US-12)**  
 $\Delta = 37^\circ 34' 55''$  L.  
 $D = 7^\circ 00'$  R = 818.22'  
 $T = 278.40'$   
 $L = 536.88'$   
 $PI = Sta. 194 + 87.04$

$\Delta = 68^\circ 42' 00''$  R.  
 $D = 7^\circ 00'$  R = 818.51'  
 $T = 559.39'$   
 $L = 981.43'$   
 $PI = Sta. 207 + 44.75$

**Station Relation**  
 Sta. 193 + 00 (Old US-12) =  
 Sta. 81 + 99.12 (Ramp D)

**Curve Data (Ramp D)**  
 $\Delta = 78^\circ 00'$  L.  
 $R = 98.00'$   
 $T = 79.36'$   
 $L = 133.41'$   
 $PI = Sta. 82 + 90.20$   
 $PC = Sta. 82 + 10.84$   
 $PT = Sta. 83 + 44.35$

$\Delta = 21^\circ 18' 45''$  R.  
 $D = 7^\circ 00'$  R = 819.02'  
 $T = 154.01'$   
 $L = 304.46'$   
 $PI = Sta. 98 + 23.76$