

Parcel	Grantor	Inst.	Date Recorded	Liber-Page	Cov.
8A	John F. Liebeck	E	11-25-38	334-452	Cov.
10	Fredrick Young	E	3-10-38	327-630	Cov.
10A	"	"	11-14-46	438-371	"
11	Alma J. Pierce	"	3-30-38	334-29	"
25	C. Frederick Hinderer	E	11-9-38	334-392	Cov.

C.S. 81104
D 2-28-61 941-167 L.A.

* 54	J. Clifford Bradbury	D	1-19-60	898-228	L.A.
54E	"	E	"	898-234	Cov.
C-55	Albert S. Piezemeier	D	4-15-60	906-394	L.A.
C-55E	"	E	"	906-394	"
56	Mark McKernan	D	7-25-60	918-230	L.A.
56E	"	E	"	918-208	Cov.
55	Albert H. Brown	E	2-13-62	979-326	"

* 54 - Conveys Limited Access rights only.

Curve Data (Surv. &)
 $\Delta = 3^\circ 49' L$
 $D = 0^\circ 29' 53''$
 $T = 383.22' R + 1,501.64'$
 $L = 766.31'$
 $PI = Sta. 1933 + 82.27$

Curve Data (SERVICE RD.)
 $\Delta = 78^\circ 00' L$
 $D = 11^\circ 46' 39''$
 $T = 393.94'$
 $L = 662.28'$
 $PI = Sta. 7 + 32.42$
 $R = 486.48'$

SYLVAN TWP
T.2 S. - R.3 E.

Station Relation
 Sta. 107 + 70.51 (M-92 E) =
 Sta. 0 + 00 (SERVICE RD.)

Parcel	Grantor	Inst.	Date Recorded	Liber-Page	Cov.
C-57	Raymond J. Liebeck	D	4-15-60	906-395	L.A.
C-57E	"	E	"	906-395	"
C-58	J. Thomas Merkel	D	"	906-396	L.A.
C-58E	"	E	"	906-396	"
* C-59	Joseph T. Merkel	D	"	906-397	L.A.
C-59E	"	E	"	906-397	"
C-62	Albert H. Brown	D	"	906-398	L.A.
60	J. Carmichael	QC	11-10-70	1342-118	L.A.
61	"	D	"	1342-182	L.A.
61E	"	E	"	1342-118	L.A.

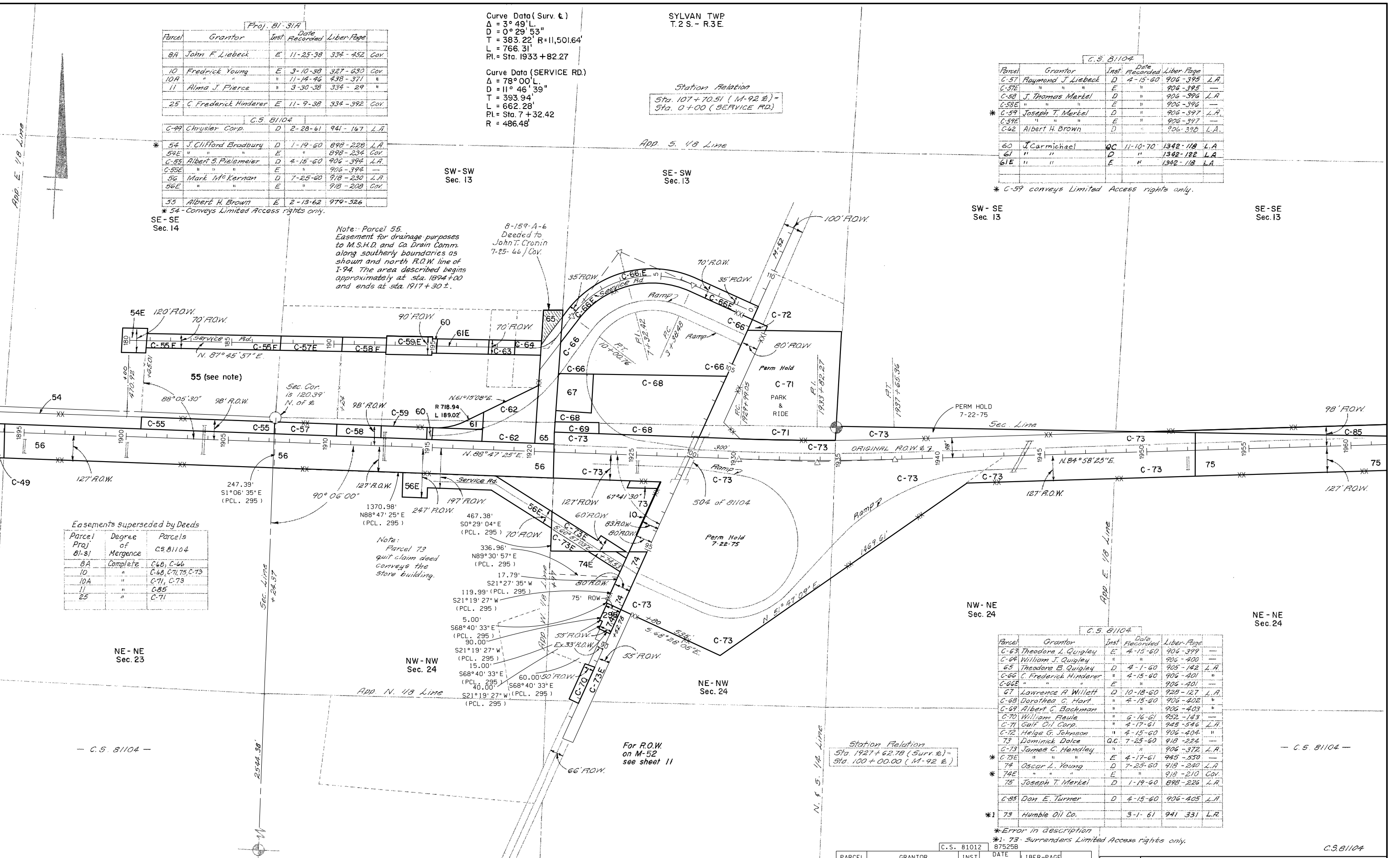
* C-59 conveys Limited Access rights only.

Note: Parcel 55.
 Easement for drainage purposes
 to M.S.H.D. and Co. Drain Comm.
 along southerly boundaries as
 shown and north R.O.W. line of
 I-94. The area described begins
 approximately at sta. 1894+00
 and ends at sta. 1917+30 ±.

8-159-A-6
 Deeded to
 John T. Cronin
 7-25-66 Cov.

Parcel	Degree of Merger	Parcels
8A	Complete	C-68, C-66
10	"	C-68, C-71, C-73
10A	"	C-71, C-73
11	"	C-85
25	"	C-71

Note:
 Parcel 73
 quit claim deed
 conveys the
 store building.



Station Relation
 Sta. 1927 + 62.78 (Surv. &)
 Sta. 100 + 00.00 (M-92 E)

Parcel	Grantor	Inst.	Date Recorded	Liber-Page	Cov.
C-63	Theodore L. Quigley	E	4-15-60	906-399	"
C-64	William J. Quigley	"	"	906-400	"
65	Theodore B. Quigley	D	4-1-60	905-142	L.A.
C-66	C. Frederick Hinderer	"	4-15-60	906-401	"
C-66E	"	E	"	906-401	"
67	Lawrence A. Willett	D	10-18-60	928-127	L.A.
C-68	Dorothea C. Hart	"	4-15-60	906-402	"
C-69	Albert C. Bachman	"	"	906-403	"
C-70	William Reule	"	6-16-61	952-143	"
C-71	Gulf Oil Corp.	"	4-17-61	945-546	L.A.
C-72	Helge G. Johnson	"	4-15-60	906-404	"
73	Dominick Dolce	QC	7-25-60	918-224	"
C-73	James C. Hendley	"	"	906-372	L.A.
C-73E	"	E	4-17-61	945-550	"
* 74	Oscar L. Young	D	7-25-60	918-240	L.A.
74E	"	E	"	918-210	Cov.
75	Joseph T. Merkel	D	1-19-60	898-226	L.A.
C-85	Don E. Turner	D	4-15-60	906-405	L.A.
* 73	Humble Oil Co.	"	3-1-61	941-331	L.R.

*Error in description
 *1- 73 - Surrenders Limited Access rights only.

PARCEL	GRANTOR	INST	DATE RECORDED	LIBER-PAGE
1. 295	BACK DOOR PROP., LLC	E	3-23-16	5143-360

1. COVER PCL. 74E

C.S. 81104

RIGHT-OF-WAY MAP

DRAWN BY: WILCOX		CHECKED BY:	
LAST REVISION DATE: 4-14-16	ROUTE	PROJ/JOB#	CONTROL SECTION
COUNTY: WASHTENAW	I-94	81-31	81104
FILE NO.: 81-R-1		87525B	64