

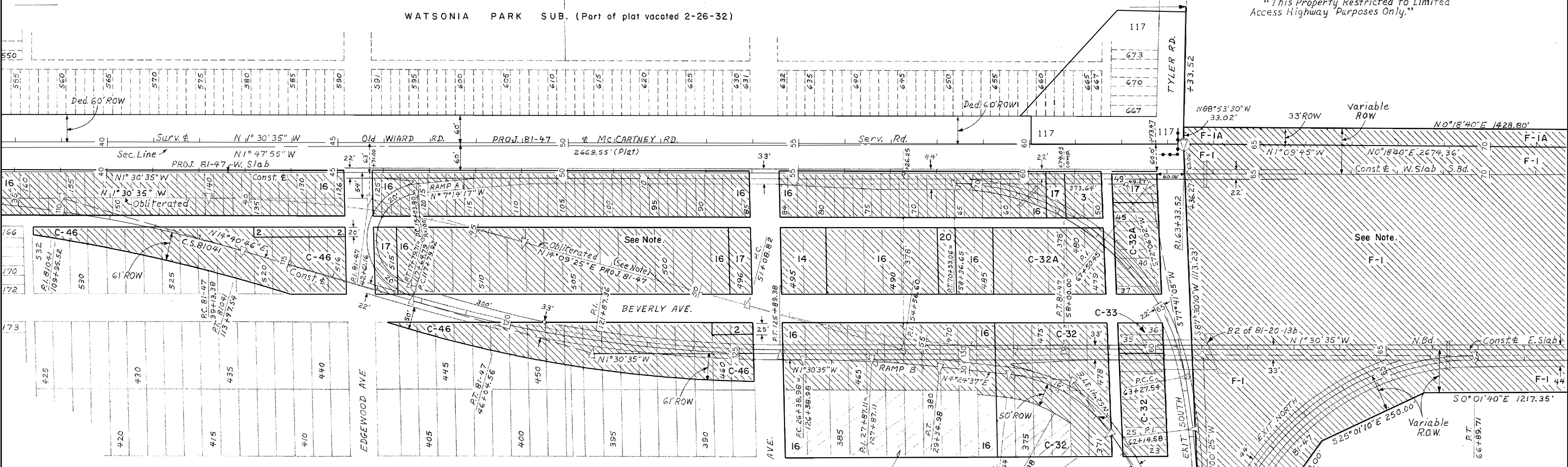
C.S. 81041 RAMP A  
Curve Data  
Δ = 158° 04' 57" L  
D = 57° 17' 45" (Arc Def.)  
R = 100.00'  
L = 275.91'  
PC = Sta. 15 + 03.80  
PT = Sta. 17 + 79.71 opp.  
Sta. 117 + 64.79

C.S. 81041 E. SLAB  
Curve Data Const.  
Δ = 16° 11' 21" L  
D = 2° 00'  
T = 407.44'  
L = 809.46'  
P.I. = Sta. 121 + 87.36

PROJ. 81-47 E. SLAB  
Curve Data  
Δ = 15° 40' L  
D = 2° 16'  
T = 347.78'  
L = 691.18'  
P.I. = Sta. 54 + 56.60 opp.  
Sta. 57 + 26.25

Note:  
Crosshatched areas on this sheet  
Deeded to Board of Co. Rd. Commissioners  
5-20-60, Recorded 8-5-60, Liber 919, Page 632.  
"This Property Restricted to Limited  
Access Highway Purposes Only."

WATSONIA PARK SUB. (Part of plat vacated 2-26-32)



WATSONIA PARK SUB.

| Parcel | Grantor              | Inst. | Date Recorded | Liber-Page |
|--------|----------------------|-------|---------------|------------|
| F-1    | Ford Motor Co.       | Q.C.  | 4-13-44       | 378-243    |
| F-1A   | "                    | "     | 4-26-44       | 379-203    |
| 2      | Ypsilanti Twp.       | D     | 7-13-43       | 370-529    |
| 3      | Harry C. Randall     | "     | 12-16-43      | 372-517    |
| 14     | William F. Darr      | "     | 7-13-43       | 370-521    |
| 16     | Ypsilanti Twp.       | Q.C.  | "             | 369-95     |
| 17     | Nelson D. Boutell    | D     | "             | 370-519    |
| 20     | J. Frederick Hoerauf | "     | 12-24-43      | 372-588    |
| C-30   | Sylvester F. Brown   | "     | 5-18-42       | 360-498    |
| C-31   | Paul H. Ehman        | "     | "             | 360-498    |
| C-32   | "                    | "     | "             | 360-498    |
| C-32A  | "                    | "     | "             | 360-498    |
| C-33   | Ishmael J. Rodwell   | "     | "             | 360-498    |

Note:  
The widths of the pavements were shown to help show the relationship of the various centerlines and R.O.W. lines.

Note:  
C.S. 81041 Const. of relocated E. Slab does not tie to Proj. 81-47. The obliterated of Proj. 81-47 was shown to give the uninterrupted stationing of the E. Slab before and beyond the relocated E. Slab.

| PARCEL | GRANTOR                | INST. | DATE RECORDED | LIBER-PAGE |
|--------|------------------------|-------|---------------|------------|
| 117    | LOCAL 1776 UAW BLDG CO | D     | 10-10-86      | 2084-661   |

SW-NW  
Sec. 13

NW-NW  
Sec. 13

SW-SW  
Sec. 12

C.S. 81041 E. SLAB  
Curve Data Const.  
Δ = 16° 11' 21" R  
D = 2° 00'  
T = 407.44'  
L = 809.46'  
P.I. = Sta. 109 + 95.52

Curve Data

|  |  |   |
|--|--|---|
| C.S. 81041<br>Curve No. 1<br>Δ = 5° 55' 12" R<br>D = 2° 00' (Arc Def.)<br>T = 148.13'<br>L = 296.00'<br>P.I. = Sta. 27 + 87.11 | C.S. 81041<br>Curve No. 2<br>Δ = 48° 17' R<br>D = 18° 28' 57" (Arc Def.)<br>T = 138.94'<br>L = 261.24'<br>P.I. = Sta. 32 + 25.38 | RAMP B<br>Curve No. 3<br>Δ = 30° 46' 58" R<br>D = 6° 42' (Arc Def.)<br>T = 235.42'<br>L = 459.45'<br>P.I. = Sta. 35 + 83.10 |
|--|--|---|

Curve Data Surv.  
Δ = 0° 20' 50" R  
P.I. = Sta. 63 + 33.52

Compound Curve

|   |   |
|---|---|
| PROJ. 81-47 EXIT SOUTH<br>Curve Data Const.<br>Δ = 79° 11' 40" L<br>D = 11° 13' 30"<br>T = 422.91'<br>L = 705.52'<br>P.I. = Sta. 67 + 50.45 | PROJ. 81-47 EXIT NORTH<br>Curve Data Const.<br>Δ = 92° 29' R<br>D = 10° 11' 45"<br>T = 587.62'<br>L = 907.07'<br>P.I. = Sta. 63 + 70.26 |
|---|---|

SE-SW  
Sec. 12

PROJ. 81-47 EXIT NORTH  
Curve Data Const.  
Δ = 92° 29' R  
D = 10° 11' 45"  
T = 587.62'  
L = 907.07'  
P.I. = Sta. 63 + 70.26

RIGHT-OF-WAY MAP

|                                |  |
|--------------------------------|--|
| DRAWN BY: WILCOX               | CHECKED BY:                                  |
| LAST REVISION DATE: APRIL 2005 | ROUTE: PROJ. JOB: CONTROL SECTION: SHEET NO. |
| COUNTY: WASHTENAW              | WIARD: 81-47 81041 147                       |
| FILE NO.: 81-R-1               |  |